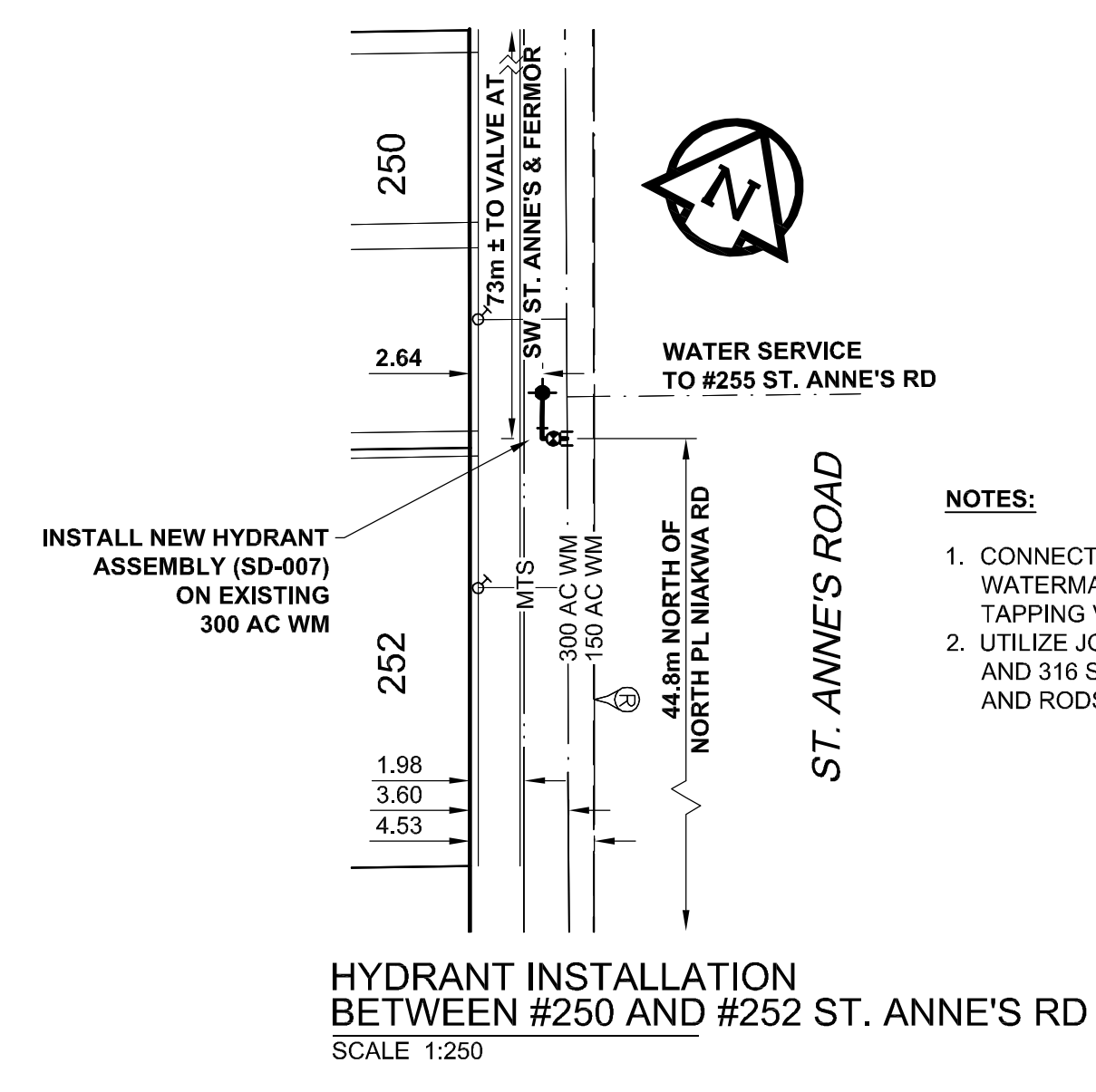
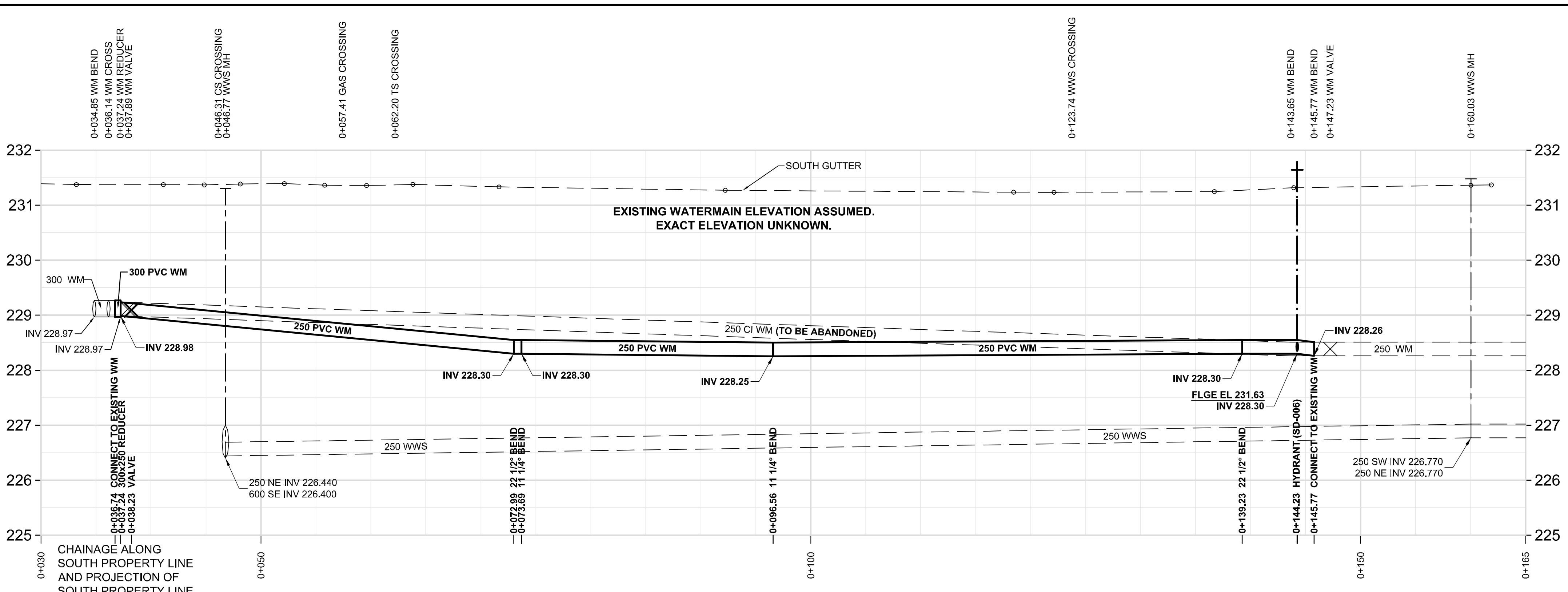


D SIZE 22" x 34" (559mm x 864mm)

PLOT: 9/6/2012 9:53:08 AM

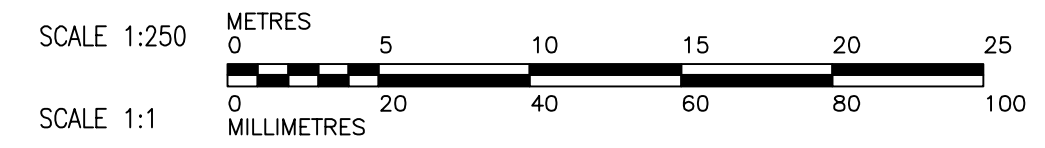
AECOM FILE NAME: 60239330-01-C-101-ROX.dwg Saved By: [Name]



- NOTES:**
- CONNECT TO EXISTING 300 AC WATERMAIN WITH TAPPING SLEEVE AND TAPPING VALVE
 - UTILIZE JOINT RESTRAINT HARNESSSES AND 316 STAINLESS STEEL FASTENERS AND RODS.

WARNING
IF POWER EQUIPMENT OR EXPLOSIVES ARE TO BE USED FOR EXCAVATION ON THIS PROJECT, THE CONTRACTOR MUST NOTIFY THE GAS COMPANY OF THE PROPOSED LOCATION OF EXCAVATION. TAKE PRECAUTION TO AVOID DAMAGE TO GAS COMPANY INSTALLATIONS. SEE PROVINCIAL REGULATION 140/92 FOR DETAILS

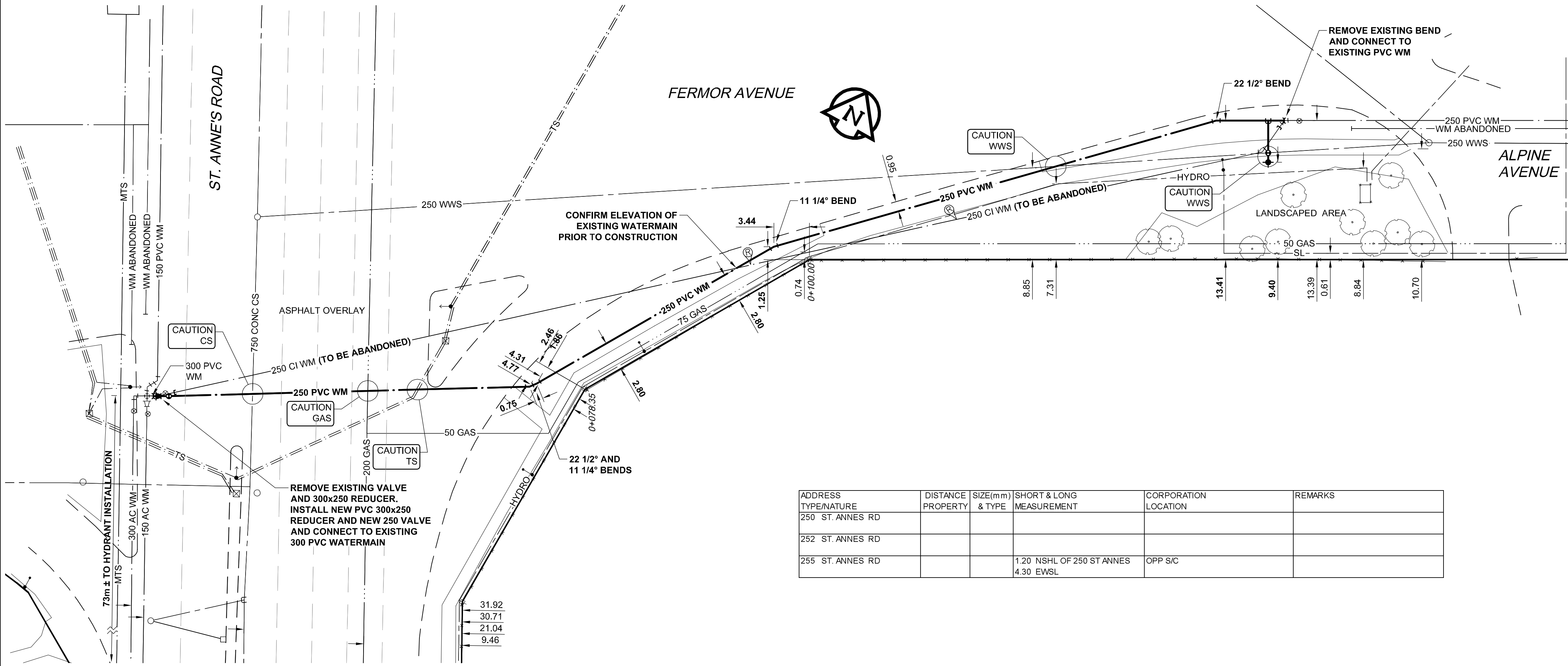
- CONSTRUCTION NOTES:**
- EXPOSE WATERMAIN CONNECTIONS AND CONFIRM INVERTS PRIOR TO CONSTRUCTION
 - INSTALL WATERMAIN BY TRENCHLESS METHODS.
 - ALL MATERIALS SHALL CONFORM TO THE CITY OF WINNIPEG STANDARD CONSTRUCTION SPECIFICATIONS.
 - MINIMUM COVER TO TOP OF PROPOSED WATERMAIN SHALL BE 2.5m FROM STREET CENTERLINE.
 - INSTALL ALL HYDRANTS WITH FLANGE ELEVATION 50mm TO 150mm ABOVE FINISHED GRADE.
 - REPLACE ALL EXISTING LEAD SERVICES FROM THE PROPOSED WATERMAIN TO PROPERTY LINE.
 - NOTIFY ALL AFFECTED RESIDENTS AND BUSINESSES 24 HOURS IN ADVANCE OF ANY WATER SHUTDOWN OR DISRUPTION OF SERVICE.
 - LOCATION OF WATER SERVICES SHOWN ON DRAWINGS ARE APPROXIMATE. THE CONTRACTOR SHALL FIELD LOCATE ALL WATER SERVICES PRIOR TO CONSTRUCTION.
 - BACKFILL UNDER OR WITHIN 1.0m OF PAVEMENTS, INCLUDING SIDEWALKS SHALL BE CLASS 3 BACKFILL EXCEPT AS NOTED. BACKFILL IN BOULEVARDS SHALL BE CLASS 5 BACKFILL. BACKFILL UNDER PAVEMENT ON ST. ANNE'S ROAD SHALL BE CLASS 1.



METRIC
WHOLE NUMBERS INDICATE MILLIMETRES
DECIMALIZED NUMBERS INDICATE METRES



BID OPPORTUNITY NO. 135-2012



ADDRESS	DISTANCE	SIZE(m/m)	SHORT & LONG	CORPORATION	REMARKS
TYPE/NATURE	PROPERTY	& TYPE	MEASUREMENT	LOCATION	
250 ST. ANNES RD					
252 ST. ANNES RD					
255 ST. ANNES RD			1.20 NSHL OF 250 ST ANNES 4.30 EWSL	OPP S/C	

EXISTING	LEGEND - PLAN	NEW	EXISTING	LEGEND - PROFILE	NEW	EXISTING	LEGEND - PROFILE	NEW
150 WM	WATERMAIN	150 WM	150 WM	WATERMAIN	150 WM	150 WM	WATERMAIN	150 WM
300 LDS	HYDRANT VALVE	300 LDS	300 LDS	HYDRANT VALVE	300 LDS	300 LDS	HYDRANT VALVE	300 LDS
250 WWS	LAND DRAINAGE SEWER	250 WWS	250 WWS	LAND DRAINAGE SEWER	250 WWS	250 WWS	LAND DRAINAGE SEWER	250 WWS
	WASTE WATER SEWER			WASTE WATER SEWER			WASTE WATER SEWER	
	MANHOLE			MANHOLE			MANHOLE	
	CATCH BASIN			CATCH BASIN			CATCH BASIN	
	CURB INLET			CURB INLET			CURB INLET	
	CULVERT			CULVERT			CULVERT	
	PIPE ABANDONMENTS			PIPE ABANDONMENTS			PIPE ABANDONMENTS	
	SURVEY BAR			SURVEY BAR			SURVEY BAR	
	LEGEND - PLAN			LEGEND - PROFILE			LEGEND - PROFILE	

LOCATION APPROVED
UNDERGROUND STRUCTURES

SUPR. U/G STRUCTURES DATE COMMITTEE

NOTE:
LOCATION OF UNDERGROUND STRUCTURES AS SHOWN ARE BASED ON THE BEST INFORMATION AVAILABLE. BUT NO GUARANTEE IS GIVEN THAT ALL EXISTING UTILITIES ARE SHOWN OR THAT THE GIVEN LOCATIONS ARE EXACT. CONFIRMATION OF EXISTENCE AND EXACT LOCATION OF ALL SERVICES MUST BE OBTAINED FROM THE INDIVIDUAL UTILITIES BEFORE PROCEEDING WITH CONSTRUCTION.

BM 54-027 84757 - N side Fermor Av on production of Rue Des Meurons. Tie on top 0.05 m dia x 2.4 m iron pipe, 2 m E of E wall produced from the S of 850 Alpine Ave. (Southgate Plaza) & 11.2 m N of CL of asphalt Pavt. of W. bound traffic lanes on Fermor Ave.

NO.	REVISIONS	YY/MM/DD	BY
0	ISSUED FOR CONSTRUCTION	12/03/06	JP
A	ISSUED FOR REVIEW	12/02/17	JP

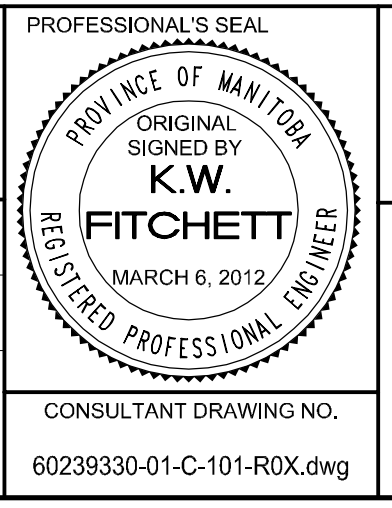
AECOM

DESIGNED BY: GSK
CHECKED BY: FMI

DRAWN BY: JP
APPROVED BY: BTW

HOR. SCALE: 1:250
VERT. SCALE: 1:50

RELEASED FOR CONSTRUCTION: KAS ZUREK
DATE: 2012/03/06



THE CITY OF WINNIPEG
WATER AND WASTE DEPARTMENT

2012 WATERMAIN RENEWALS
CONTRACT 1

FERMOR AVENUE
ST. ANNE'S ROAD TO 103m EAST OF ST. ANNE'S ROAD

SHEET 1 OF 11
CITY DRAWING NUMBER
D-12865