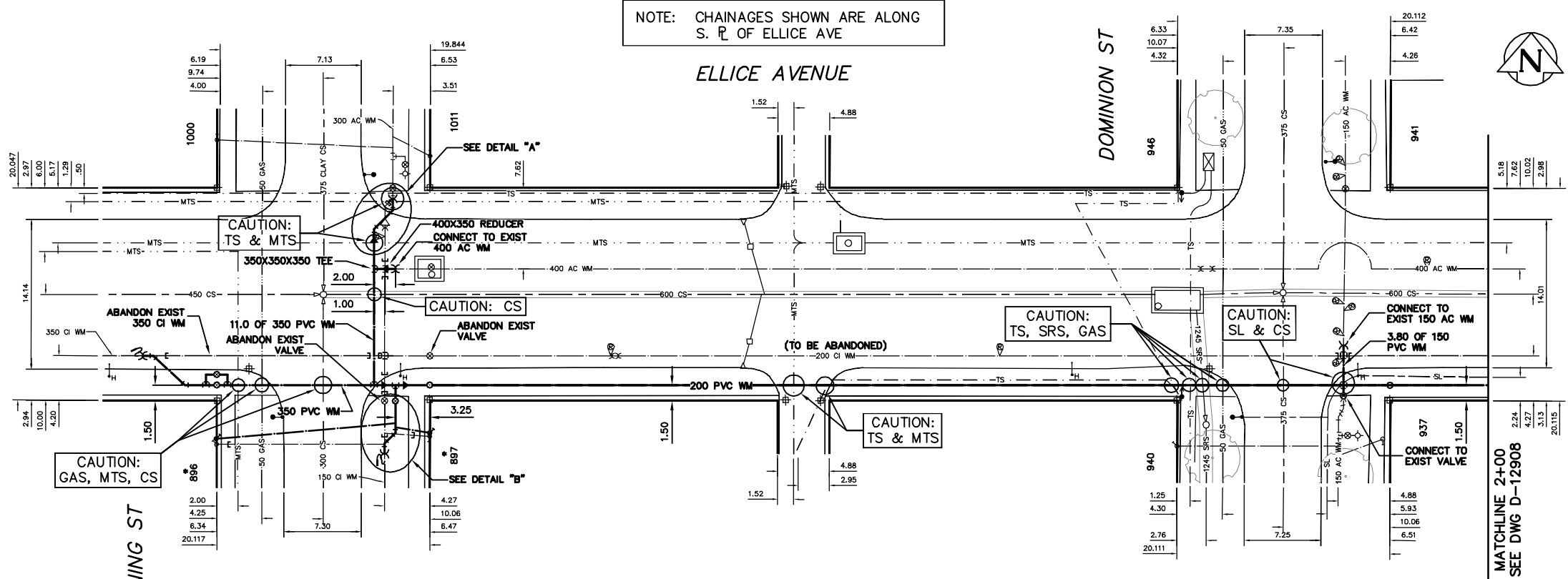


NOTE: CHAINAGES SHOWN ARE ALONG S. R. OF ELLICE AVE

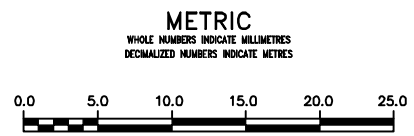


**WATER SERVICE INFORMATION**

ADDRESS	SIZE (mm) MATERIAL (STREET)	SIZE (mm) MATERIAL (PROP.)	SHORT & LONG MEASUREMENT	CORP. LOCATION	REMARKS
896 DOWNING ST RESIDENTIAL	20	20	2.23 S OF N HL LEAD	OPP OF S/C	RENEW TO R
897 DOWNING ST RESIDENTIAL	20	20	1.83 S OF N HL LEAD	0.3 N OF S/C	RENEW TO R
1000 DOWNING ST RESIDENTIAL	20	20	3.35 SSL ELLICE LEAD	OPP OF S/C	RENEW TO R
1011 DOWNING ST RESIDENTIAL	150	150	3.66 N OF S HL LEAD	0.8 S OF S/C	RENEW TO R
937 DOWNING ST RESIDENTIAL	20	20	4.57 NNL ELLICE LEAD	OPP OF S/C	RENEW TO R
940 DOWNING ST RESIDENTIAL	20	20	1.11 N OF S HL LEAD	1.82 N OF S/C	RENEW TO R
941 DOWNING ST RESIDENTIAL	20	20	3.05 NNL ELLICE LEAD	OPP OF S/C	RENEW TO R
944 DOWNING ST RESIDENTIAL	20	20	2.64 S OF N HL LEAD	OPP OF S/C	RENEW TO R
940 DOWNING ST RESIDENTIAL	20	20	3.66 SSL ELLICE LEAD	OPP OF S/C	RENEW TO R
941 DOWNING ST RESIDENTIAL	20	20	2.40 S OF N HL LEAD	OPP OF S/C	RENEW TO R
944 DOWNING ST RESIDENTIAL	20	20	3.02 E OF W HL LEAD	OPP OF S/C	SERVICED OFF ELLICE
780 GARFIELD ST N RESIDENTIAL	20	20	0.30 N OF S HL LEAD	OPP OF S/C	RENEW TO R
781 GARFIELD ST N RESIDENTIAL	20	20	4.01 S OF N HL LEAD	0.6 N OF S/C	RENEW TO R
783 GARFIELD ST N RESIDENTIAL	20	20	3.95 S OF N HL LEAD	OPP OF S/C	RENEW TO R
784 GARFIELD ST N RESIDENTIAL	20	20	4.42 SSL ELLICE LEAD	OPP OF S/C	RENEW TO R
784 GARFIELD ST N RESIDENTIAL	20	20	2.26 E OF W HL LEAD	0.3 E OF S/C	SERVICED OFF ELLICE
784 GARFIELD ST N RESIDENTIAL	20	20	5.39 S OF N HL LEAD	OPP OF S/C	RENEW TO R
784 GARFIELD ST N RESIDENTIAL	20	20	7.36 SSL GARFIELD LEAD	OPP OF S/C	RENEW TO R

\* SERVICES TO BE RENEWED TO R. ALL OTHERS TO BE RECONNECTED

NOTE: ALL VALVES TO BE INSTALLED COUNTER-CLOCKWISE TO CLOSE



**WARNING**  
IF POWER EQUIPMENT OR EXPLOSIVES ARE TO BE USED FOR EXCAVATION ON THIS PROJECT THE CONTRACTOR MUST:  
1) NOTIFY THE GAS COMPANY OF THE PROPOSED LOCATION OF EXCAVATION.  
2) TAKE PRECAUTION TO AVOID DAMAGE TO GAS COMPANY INSTALLATIONS.  
SEE PROVINCIAL REGULATION 21072 FOR DETAILS

**LOCATION APPROVED UNDERGROUND STRUCTURES**  
SUPV. U/G STRUCTURES COMMITTEE DATE  
NOTE: LOCATION OF UNDERGROUND STRUCTURES AS SHOWN ARE BASED ON THE BEST INFORMATION AVAILABLE BUT NO GUARANTEE IS GIVEN THAT ALL EXISTING UTILITIES ARE SHOWN OR THAT THE GIVEN LOCATIONS ARE EXACT. CONFIRMATION OF EXISTENCE AND EXACT LOCATION OF ALL SERVICES MUST BE OBTAINED FROM THE INDIVIDUAL UTILITIES BEFORE PROCEEDING WITH CONSTRUCTION.

NO.	REVISIONS	DATE	BY

DESIGNED BY	RL	CHECKED BY	SC
DRAWN BY	RS/CJH	APPROVED BY	KZ
S/SCALE:		RELEASED FOR CONSTRUCTION	
HORIZONTAL	1:250		
VERTICAL	1:50		
DATE	2012 03 21	DATE	
PLOT DATE:	2012 03 22		

ENGINEER'S SEAL  
ORIGINAL SIGNED BY S.R.J. COURNOYER 12-03-21  
CONSULTANT DRAWING NUMBER

**THE CITY OF WINNIPEG**  
Winnipeg  
WATER AND WASTE DEPARTMENT  
ENGINEERING DIVISION  
2012 WATERMAIN RENEWALS  
ELLICE AVENUE  
DOWNING STREET TO  
7 E OF DOMINION STREET  
SHEET 2 OF 10  
CITY DRAWING NUMBER  
D-12907