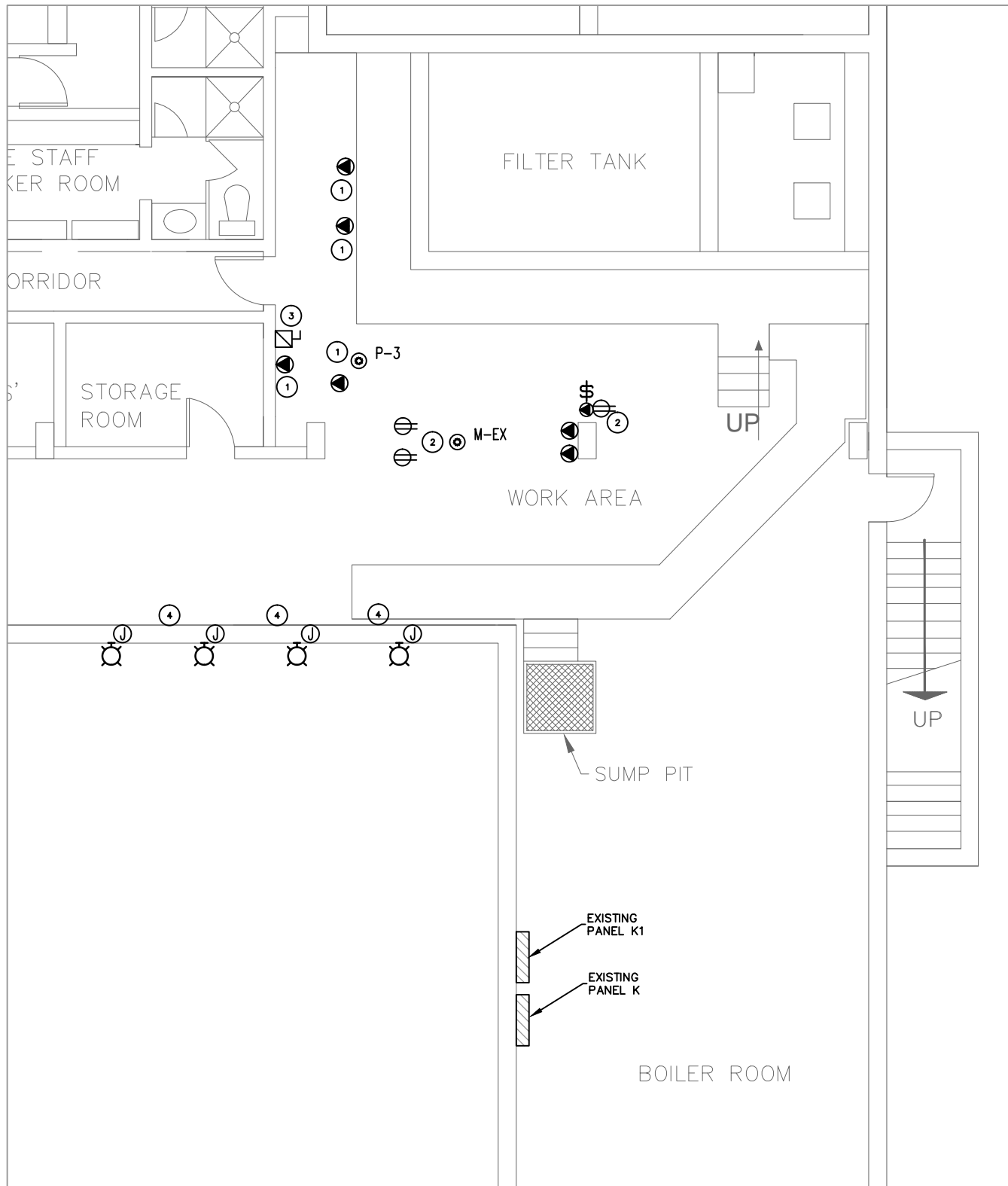


ELECTRICAL SYMBOL LEGEND	
	COMBINATION EXIT/EMERGENCY LIGHT
	LUMINAIRE, FLUORESCENT
	LUMINAIRE; INCANDESCENT, COMPACT FLUORESCENT, H.I.D. RECESSED, SURFACE OR PENDANT MOUNT, SUSPENDED FIXTURE
	LUMINAIRE, INCANDESCENT, COMPACT FLUORESCENT, H.I.D., WALL MOUNT
	SWITCH, SINGLE-POLE: a,b,c,d = LUMINAIRE SWITCH DESIGNATION
	SWITCH, TWO SINGLE POLE IN 2-GANG BOX
	PHOTOCELL, WALL MOUNT, WEATHERPROOF, FACING NORTH
	MOTOR STARTER - MAGNETIC
	MOTOR STARTER - MANUAL
	MOTOR STARTER - COMBINATION
	POWER PANEL, SURFACE MOUNTED
	CONTROL PANEL, SURFACE MOUNTED
	DUPLEX RECEPTACLE DESCRIPTORS: a = MOUNTED ABOVE COUNTER GFI = GROUND FAULT INTERRUPTER WP = WEATHER PROOF
	RECEPTACLE, DESIGNATED SERVICE; SEE DWG. SCHEDULE
	BOX, JUNCTION
	MOTOR CONNECTION, PROVIDE REQUIRED DEVICE
	MOTOR EQUIPMENT DISCONNECT

KEY NOTES:	
1	DISCONNECT EXISTING PUMP AND ASSOCIATED CONTROL DEVICES.
2	DISCONNECT EXISTING CHLORINATOR. EXISTING ASSOCIATED RECEPTACLES TO REMAIN TO BE LOCATED TO NEW LOCATION.
3	DISCONNECT AND REMOVE EXISTING PUMP STARTER.
4	RELOCATE EXISTING WET NICHE BALLAST AS REQUIRED TO MAKE SPACE FOR NEW EQUIPMENT.



1	Issued for Construction	KO	12.04.05
NO.	REVISION/DESCRIPTION	BY	DATE

**epp siepman engineering inc.**  
 mechanical engineers  
 303-100 Osborne St. South p 204.453.1080  
 Winnipeg, MB f 204.453.1335  
 R3L 1Y5 ese@eppsiepman.com

<b>DRAWN BY</b>	KO/LO	<b>CHECKED BY</b>	APPROVED
<b>DATE</b>	2012.04.05	<b>USER APPROVAL</b>	

**CITY OF WINNIPEG**  
 PLANNING, PROPERTY AND  
 DEVELOPMENT DEPARTMENT  
 CIVIC ACCOMMODATIONS DIVISION  
 300 - 65 GARRY ST. R3C 4K4

**PROJECT**  
 ELMWOOD KILDONAN POOL  
 ULTRAVIOLET SYSTEM & PUMP UPGRADES  
 909 CONCORDIA AVE.

**SHEET TITLE**  
 DEMOLITION  
 ELECTRICAL\_PLAN

<b>SCALE</b>	<b>PROJECT NO.</b>	<b>SHEET NO.</b>
1/8"=1'-0"	118-2012	E-1