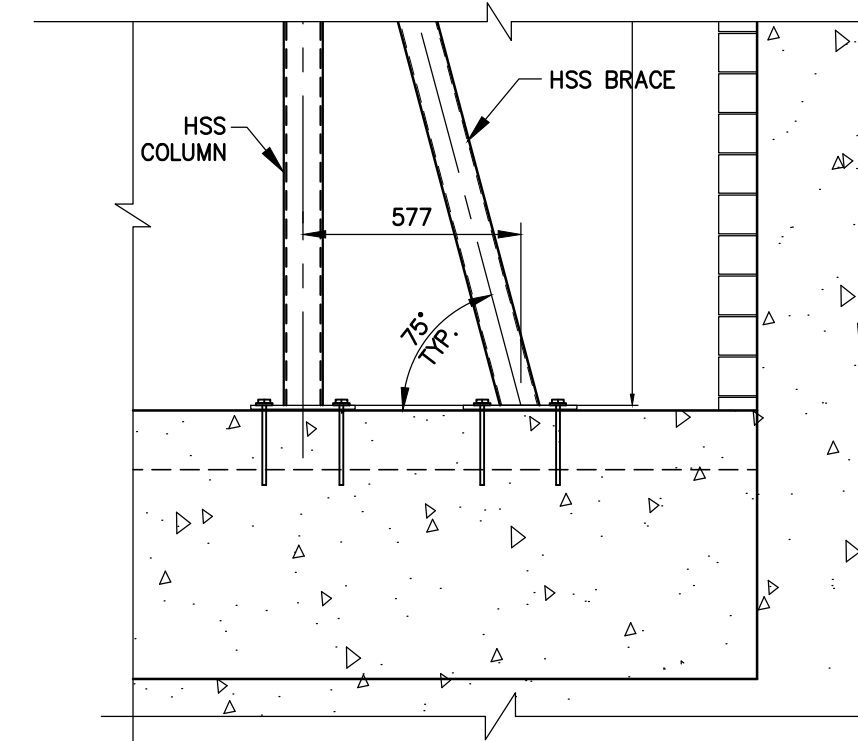


SECTION **A-S2**
S1
1:20

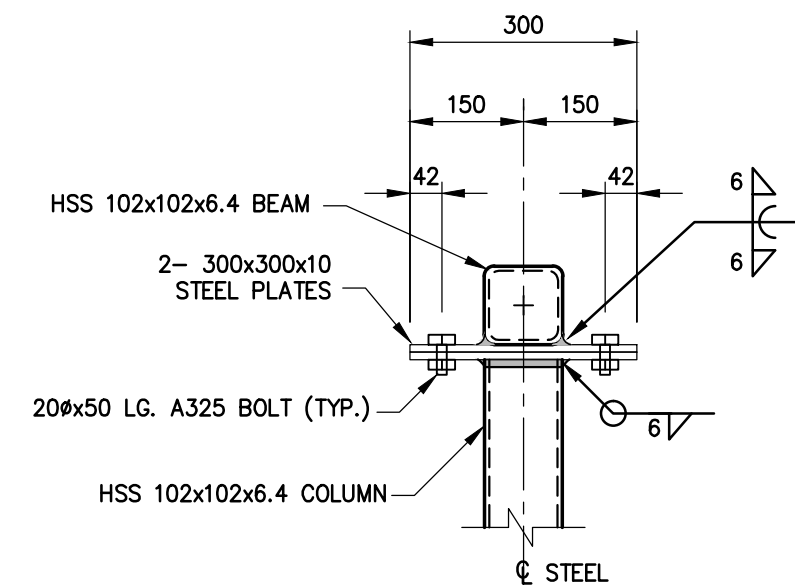


SECTION **B-S2**
S1
1:20

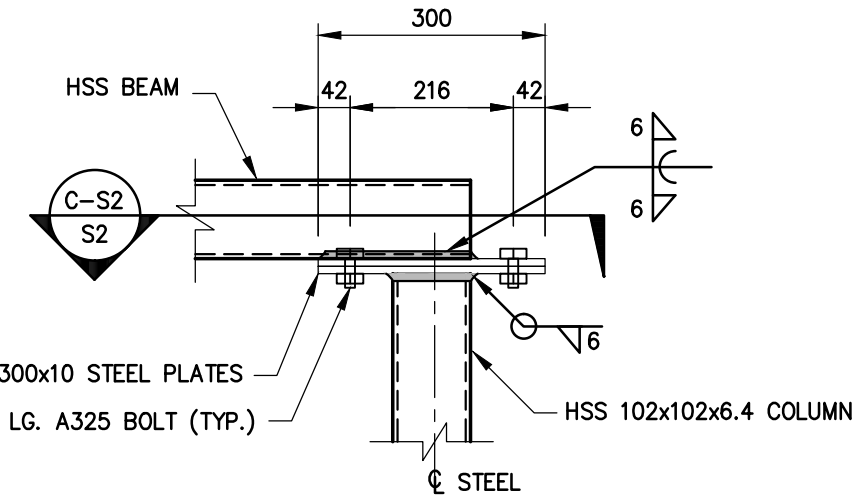
APEGM
Certificate of Authorization
MMM Group Limited
No. 4531 Date: 11.12.15

ALL DIMENSIONS TO EXISTING SURFACES SHALL BE TAKEN AS ±. VERIFY PRIOR TO CONSTRUCTION.

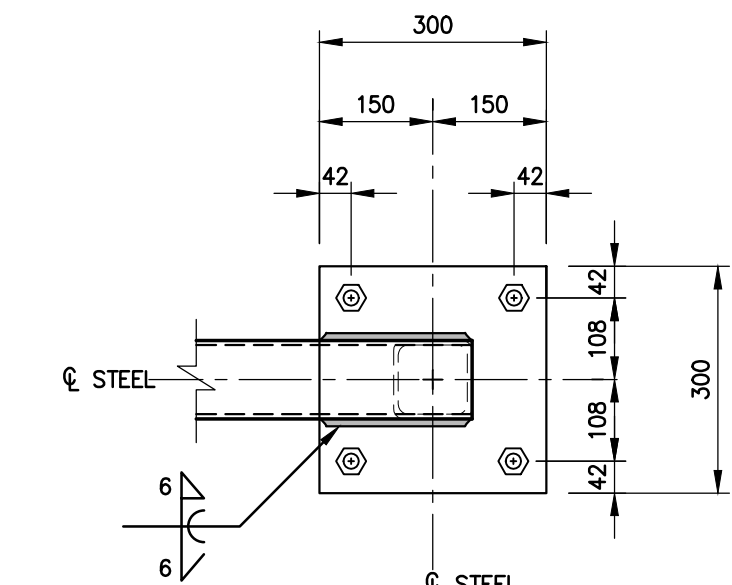
NOTE:
These design documents are prepared solely for the use by the party with whom the design professional has entered into a contract and there are no representations of any kind made by the design professional to any party with whom the design professional has not entered into a contract.



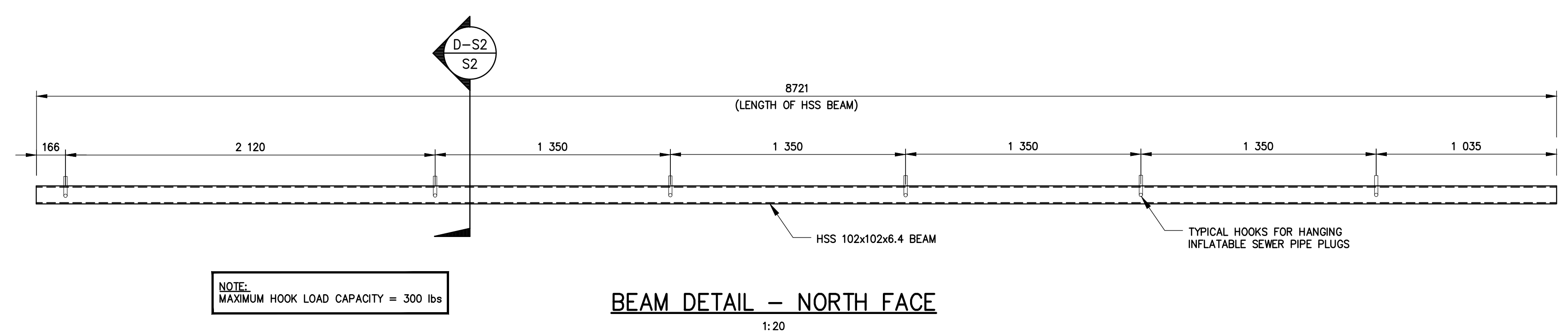
DETAIL **1-S2**
S2
1:10



DETAIL **2-S2**
S2
1:10

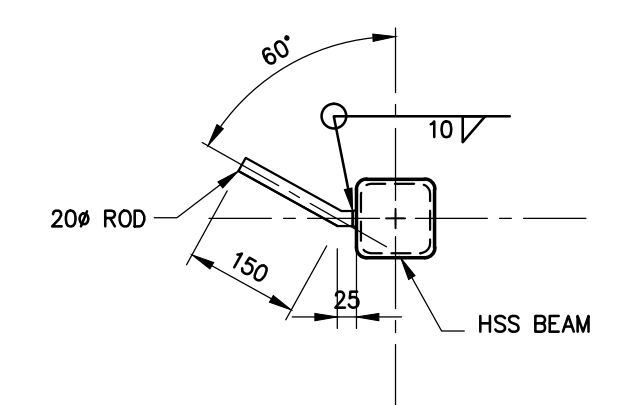


DETAIL **3-S2**
S2
1:10

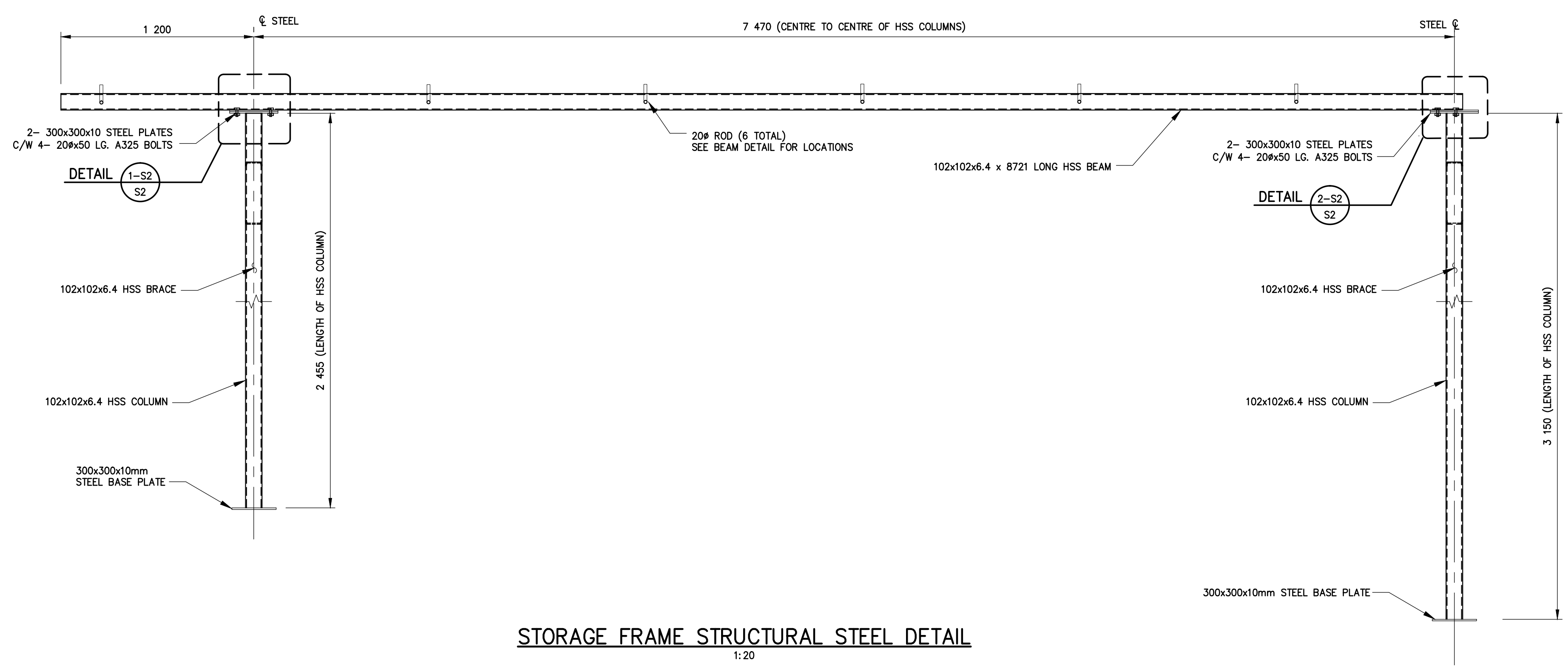


BEAM DETAIL - NORTH FACE
1:20

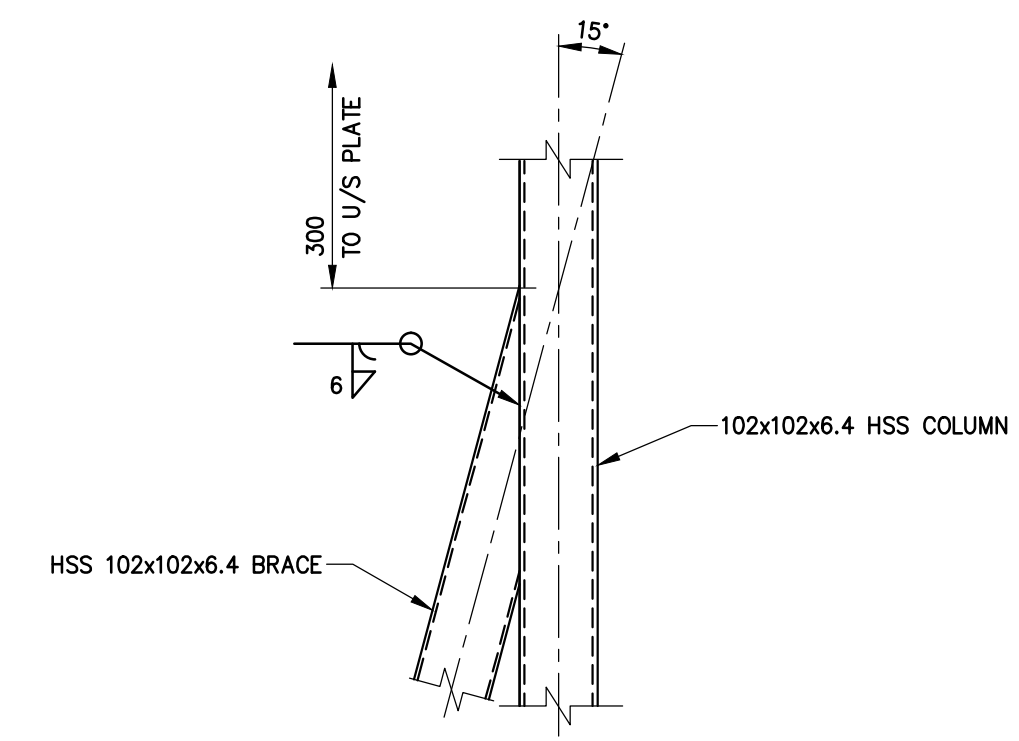
NOTE:
MAXIMUM HOOK LOAD CAPACITY = 300 lbs



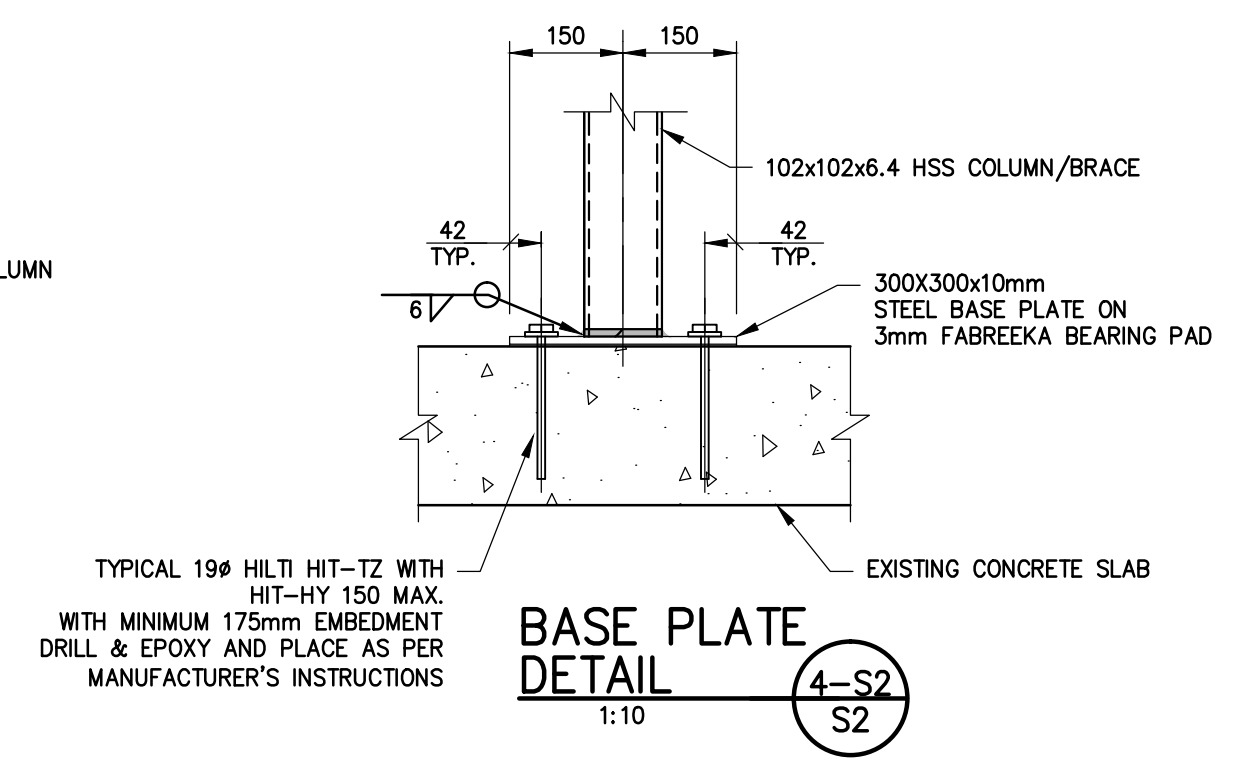
SECTION **D-S2**
S2
1:10



STORAGE FRAME STRUCTURAL STEEL DETAIL
1:20



CONNECTION
DETAIL **3-S2**
S2
1:10



BASE PLATE
DETAIL **4-S2**
S2
1:10

A-B
C
A = DETAIL/SECTION No.
B = DRAWING WHERE SHOWN
C = DRAWING WHERE TAKEN

METRIC
WHOLE NUMBERS INDICATE MILLIMETRES
DECIMALIZED NUMBERS INDICATE METRES

No.	REVISIONS	DATE	BY	DATE	DATE
0	ISSUED FOR TENDER	11.12.15	MLW		
				11.12.15	

ENGINEER'S SEAL
PROVINCE OF MANITOBA
M. L. WADELIUS
Member
23808
REGISTERED PROFESSIONAL ENGINEER

THE CITY OF WINNIPEG
WATER AND WASTE DEPARTMENT
Winnipeg

NEW HANGING FRAME FOR INFLATABLE SEWER PIPE PLUGS
360 McPHILLIPS STREET, WINNIPEG, MB.

CONSULTANT DRAWING NUMBER: 551114-S2
SHEET 2 OF 2
CITY DRAWING NUMBER: 9889

SECTIONS AND DETAILS

Last Saved: December 15, 2011 - 10:33 AM by PATERSON, P:\05110-05111995511114 - Assessment & Design of New Host Device\MMM Drawings\551114-360 McPhillips Host Device 8888 & 8889 Plans and Details_rv00.dwg