

**SEWER JUNCTION INFORMATION
FOR SEWER ID MA20001937**

REFERENCE—METERS WEST OF MANHOLE MH20001762

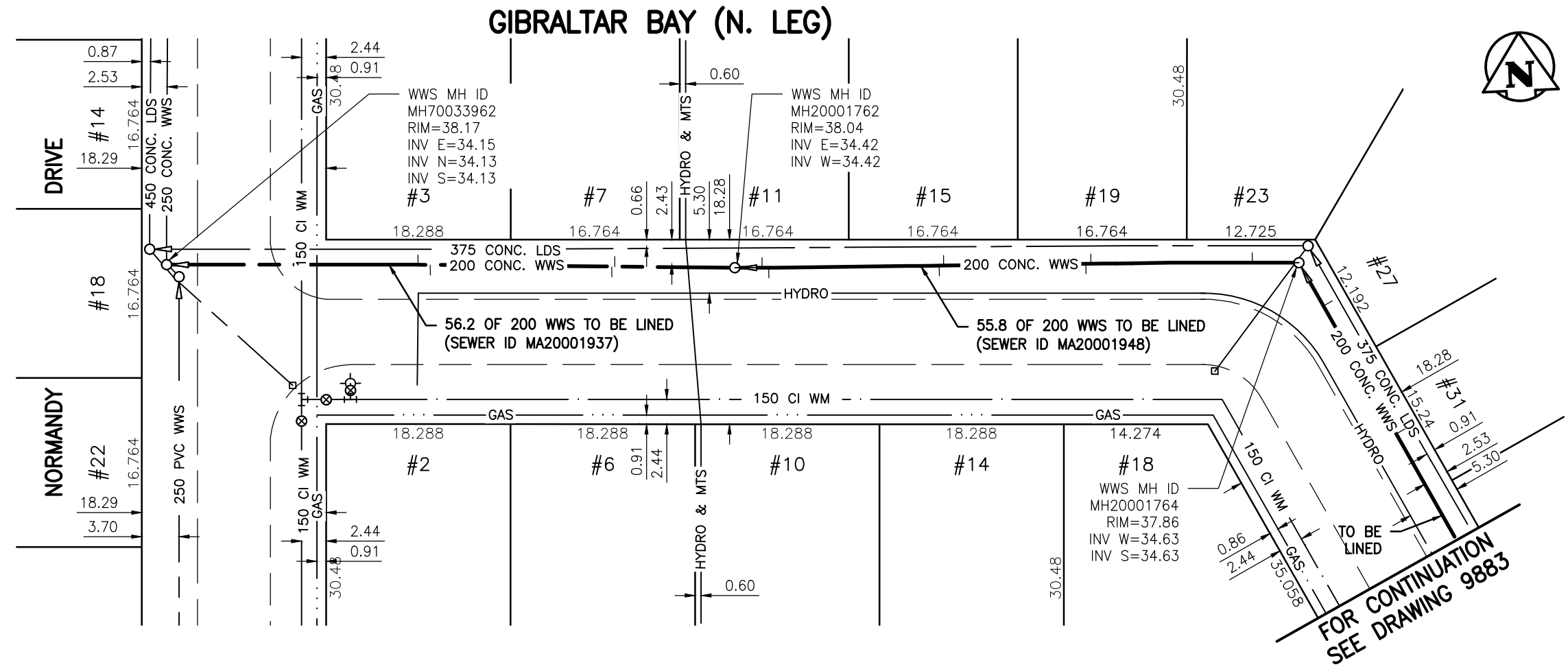
DIST. FROM REF. MANHOLE	JUNCTION DIA.	CLOCK REF.	SERVICE TYPE	DESCRIPTION
11.9	150	02	CX	ADJ SSL
12.2	100	10	CN	LIVE
30.2	100	11	CN	-
31.4	100	03	CN	-

**SEWER JUNCTION INFORMATION
FOR SEWER ID MA20001948**

REFERENCE—METERS WEST OF MANHOLE MH20001764

DIST. FROM REF. MANHOLE	JUNCTION DIA.	CLOCK REF.	SERVICE TYPE	DESCRIPTION
4.6	150	03	CX	LIVE. FRACTURED
20.6	150	02	CX	FRACTURED
21.1	150	10	CN	-
35.2	150	02	CN	-
35.6	150	10	CN	-
52.6	150	10	CX	LIVE. FRACTURED
53.2	150	03	CX	LIVE. FRACTURED

ALL JUNCTION INFORMATION
BASED ON CCTV INSPECTION



WARNING

IF POWER EQUIPMENT OR EXPLOSIVES ARE TO BE USED FOR EXCAVATION ON THIS PROJECT THE CONTRACTOR MUST:

- 1) NOTIFY THE GAS COMPANY OF THE PROPOSED LOCATION OF EXCAVATION.
- 2) TAKE PRECAUTION TO AVOID DAMAGE TO GAS COMPANY INSTALLATIONS.

SEE PROVINCIAL REGULATION 140/92 FOR DETAILS

METRIC

WHOLE NUMBERS INDICATE MILLIMETRES
DECIMALIZED NUMBERS INDICATE METRES

BENCH MARK: E. side Cavalier Dr. @ Lumsden Ave., Tblt. in W. Conc foundation No. 959
Cavalier Dr., 0.5 m S. & 0.2 m below stucco of N.W. Cor. of dwelling.



Certificate of Authorization

Stantec Consulting Ltd.

No. 1301 Date: _____

BID OPPORTUNITY 927-2011

**LOCATION APPROVED
UNDERGROUND STRUCTURES**

NO.	REVISIONS	DATE	BY

SUPV. U/G STRUCTURES COMMITTEE DATE

NOTE:
LOCATION OF UNDERGROUND STRUCTURES AS SHOWN ARE BASED ON THE BEST INFORMATION AVAILABLE BUT NO GUARANTEE IS GIVEN THAT ALL EXISTING UTILITIES ARE SHOWN OR THAT THE GIVEN LOCATIONS ARE EXACT. CONFIRMATION OF EXISTENCE AND EXACT LOCATION OF ALL SERVICES MUST BE OBTAINED FROM THE INDIVIDUAL UTILITIES BEFORE PROCEEDING WITH CONSTRUCTION.

B.M. 40-020
ELEV. 237.963m



Stantec Consulting Ltd.

905 Waverley Street, Winnipeg, Manitoba
Tel 204-489-5900 Fax 204-453-9012

DESIGNED BY	J.K.H.	CHECKED BY	W.A.B.
DRAWN BY	K.R.	APPROVED BY	H.A.K.
HOR. SCALE:	1:500	RELEASED FOR CONSTRUCTION:	
VERTICAL:	N/A	DATE	2011.10.08

ENGINEER'S SEAL

CONSULTANT DRAWING NO.
C-215



**THE CITY OF WINNIPEG
WATER AND WASTE DEPARTMENT**

**2011 SEWER RENEWALS
BY CIPP LINING - CONTRACT 21
GIBRALTAR BAY (N. LEG)**

2ND MH E. OF NORMANDY DR. (PL) TO
MH AT NORMANDY DR. (PL)

SHEET OF	118 OF 119
CAD FILE DRAWING NUMBER	13220c-207-766.dwg
CITY DRAWING NUMBER	9884