

**SEWER JUNCTION INFORMATION
FOR SEWER ID MA20004937**

REFERENCE—METERS SOUTH OF MANHOLE MH20004567

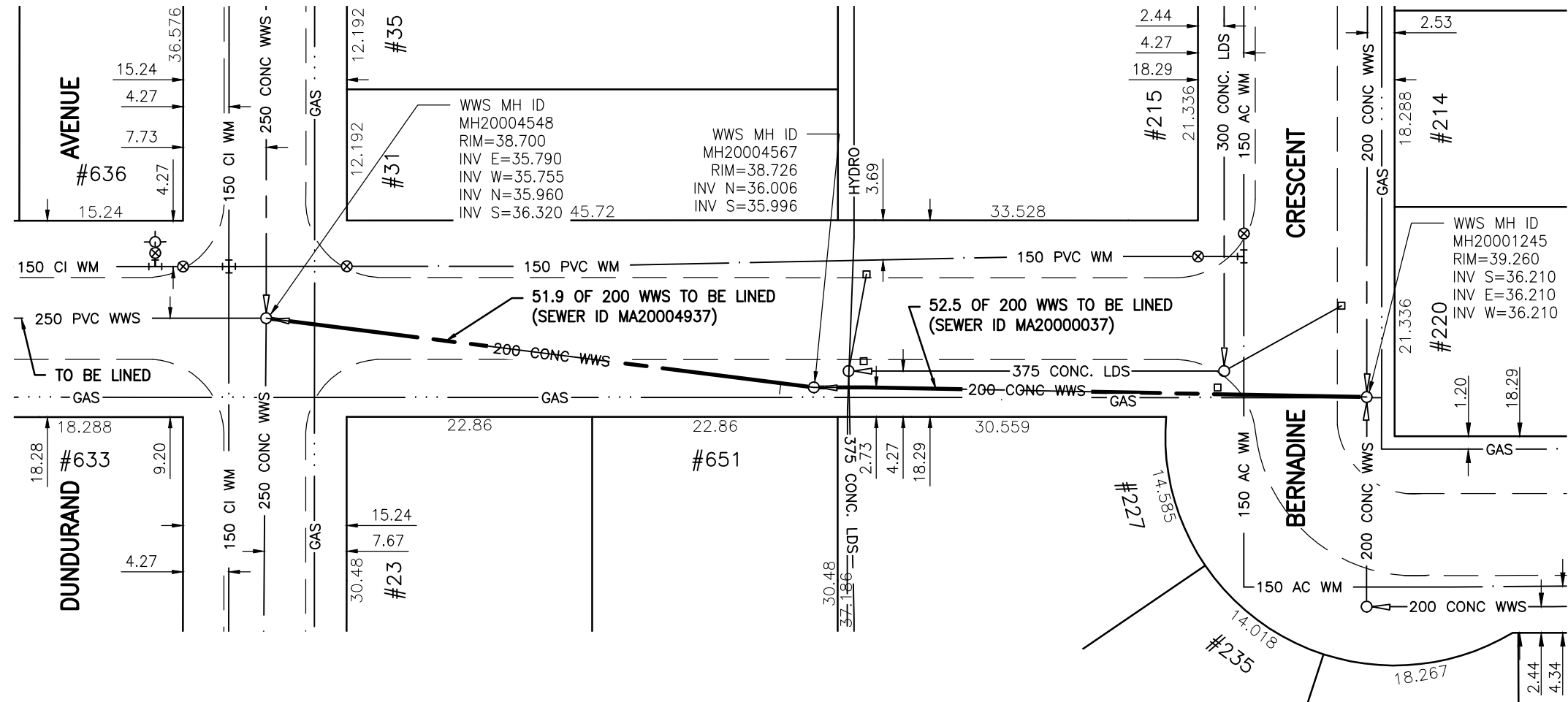
DIST. FROM REF. MANHOLE	JUNCTION DIA.	CLOCK REF.	SERVICE TYPE	DESCRIPTION
3.1	100	10	CN	-

**SEWER JUNCTION INFORMATION
FOR SEWER ID MA20000037**

REFERENCE—METERS SOUTH OF MANHOLE MH20001245

DIST. FROM REF. MANHOLE	JUNCTION DIA.	CLOCK REF.	SERVICE TYPE	DESCRIPTION
34.0	100	10	CN	-

ALL JUNCTION INFORMATION
BASED ON CCTV INSPECTION



WARNING

IF POWER EQUIPMENT OR EXPLOSIVES ARE TO BE USED FOR EXCAVATION ON THIS PROJECT THE CONTRACTOR MUST:

- 1) NOTIFY THE GAS COMPANY OF THE PROPOSED LOCATION OF EXCAVATION.
- 2) TAKE PRECAUTION TO AVOID DAMAGE TO GAS COMPANY INSTALLATIONS.

SEE PROVINCIAL REGULATION 140/92 FOR DETAILS

METRIC

WHOLE NUMBERS INDICATE MILLIMETRES
DECIMALIZED NUMBERS INDICATE METRES

BENCH MARK: 654009 (Geodetic Downs), E. side Perimeter Hwy., N. of Portage Ave., Tblt. in 7.6 m Conc. pile (See Sketch).



Certificate of Authorization

Stantec Consulting Ltd.

No. 1301 Date: _____

BID OPPORTUNITY 927-2011

**LOCATION APPROVED
UNDERGROUND STRUCTURES**

NO.	REVISIONS	DATE	BY

SUPV. U/G STRUCTURES COMMITTEE DATE

NOTE:
LOCATION OF UNDERGROUND STRUCTURES AS SHOWN ARE BASED ON THE BEST INFORMATION AVAILABLE BUT NO GUARANTEE IS GIVEN THAT ALL EXISTING UTILITIES ARE SHOWN OR THAT THE GIVEN LOCATIONS ARE EXACT. CONFIRMATION OF EXISTENCE AND EXACT LOCATION OF ALL SERVICES MUST BE OBTAINED FROM THE INDIVIDUAL UTILITIES BEFORE PROCEEDING WITH CONSTRUCTION.



Stantec Consulting Ltd.

905 Waverley Street, Winnipeg, Manitoba
Tel 204-489-5900 Fax 204-453-9012

DESIGNED BY	J.K.H.	CHECKED BY	W.A.B.
DRAWN BY	K.R.	APPROVED BY	H.A.K.
HOR. SCALE:	1:500	RELEASED FOR CONSTRUCTION:	
VERTICAL:	N/A	DATE	2011.10.07

ENGINEER'S SEAL

CONSULTANT DRAWING NO.
C-195



**THE CITY OF WINNIPEG
WATER AND WASTE DEPARTMENT**

**2011 SEWER RENEWALS
BY CIPP LINING - CONTRACT 21
ST. CHARLES STREET**

**MH AT DUNDURAND AV. TO
MH AT BERNADINE CR.**

SHEET OF	98 OF 119
CAD FILE DRAWING NUMBER	13220c-186-766.dwg
CITY DRAWING NUMBER	9864