

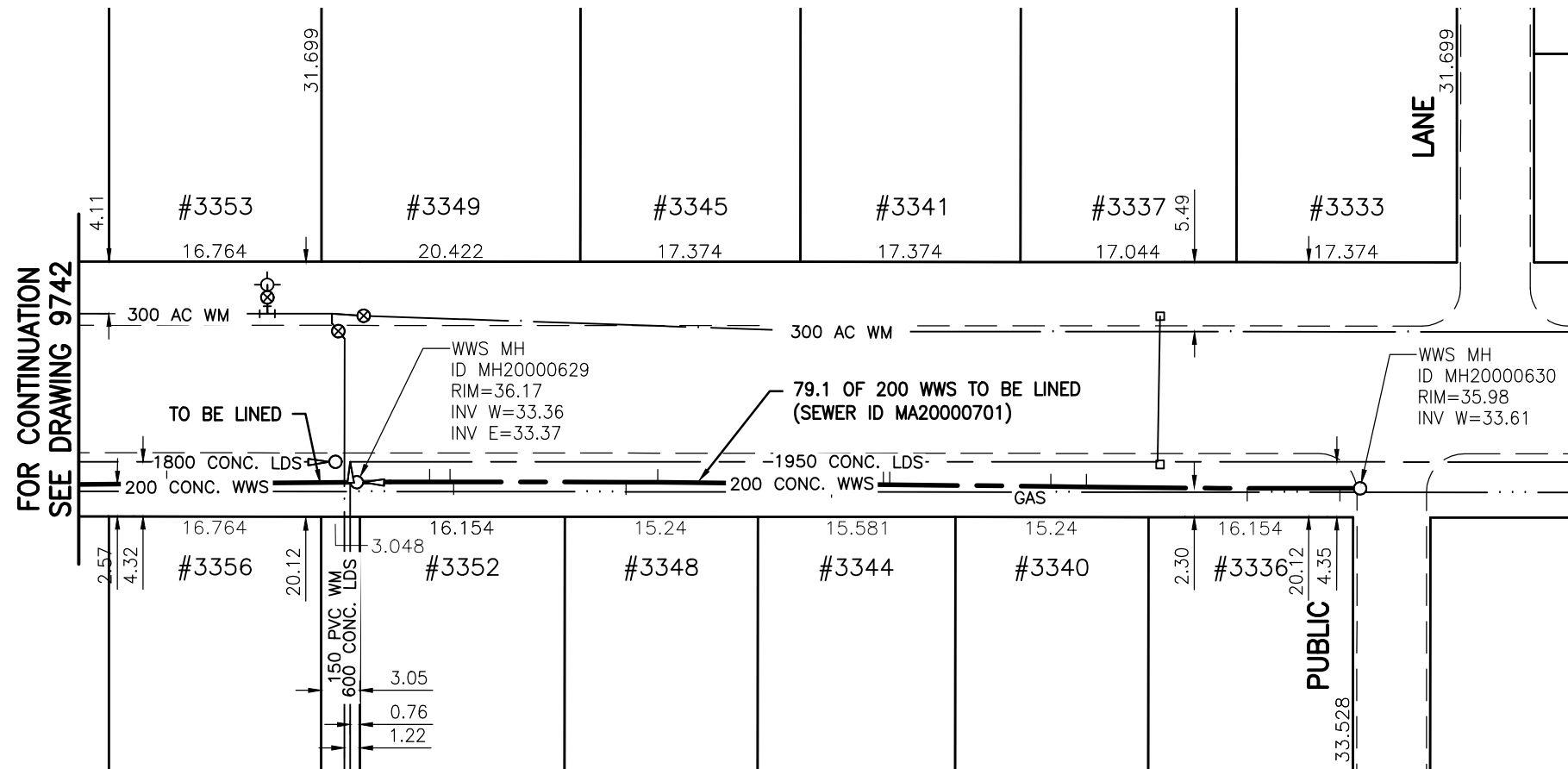
**SEWER JUNCTION INFORMATION  
FOR SEWER ID MA20000701**

REFERENCE—METERS WEST OF MANHOLE MH20000630

DIST. FROM REF. MANHOLE	JUNCTION DIA.	CLOCK REF.	SERVICE TYPE	DESCRIPTION
1.6	150	09	CN	LIVE
8.9	150	09	CN	—
21.6	150	03	CN	LIVE
24.4	150	09	CN	—
37.1	150	03	CN	CAPPED
37.6	150	03	CN	—
41.7	150	09	CN	LIVE
55.4	150	03	CN	—
57.9	150	09	CN	—
71.5	150	09	CN	LIVE
71.8	150	03	CN	—
73.4	150	03	CN	CAPPED

ALL JUNCTION INFORMATION  
BASED ON CCTV INSPECTION

**NESS AVENUE**



FOR CONTINUATION  
SEE DRAWING 9742



**WARNING**

IF POWER EQUIPMENT OR EXPLOSIVES ARE TO BE USED FOR EXCAVATION ON THIS PROJECT THE CONTRACTOR MUST:

- 1) NOTIFY THE GAS COMPANY OF THE PROPOSED LOCATION OF EXCAVATION.
- 2) TAKE PRECAUTION TO AVOID DAMAGE TO GAS COMPANY INSTALLATIONS.

SEE PROVINCIAL REGULATION 140/92 FOR DETAILS

**METRIC**

WHOLE NUMBERS INDICATE MILLIMETRES  
DECIMALIZED NUMBERS INDICATE METRES

BENCH MARK: W. side Cavalier Dr., S. of Fairlane Ave., Tblt. in E. Conc. foundation No. 664 Cavalier Dr., 2.5 m S. & 0.2 m below brick of N.E. Cor. of Dwelling.



Certificate of Authorization

Stantec Consulting Ltd.

No. 1301 Date: \_\_\_\_\_

**BID OPPORTUNITY 927-2011**

LOCATION APPROVED  
UNDERGROUND STRUCTURES

B.M.	40-026		
ELEV.	237.452m		
NO.	REVISIONS	DATE	BY



**Stantec Consulting Ltd.**

905 Waverley Street, Winnipeg, Manitoba  
Tel 204-489-5900 Fax 204-453-9012

DESIGNED BY	J.K.H.	CHECKED BY	W.A.B.
DRAWN BY	K.R.	APPROVED BY	H.A.K.
HOR. SCALE:	1:500	RELEASED FOR CONSTRUCTION:	
VERTICAL:	N/A	DATE	2011.10.05

ENGINEER'S SEAL

CONSULTANT DRAWING NO.  
**C-174**



**THE CITY OF WINNIPEG**  
WATER AND WASTE DEPARTMENT

**2011 SEWER RENEWALS**  
BY CIPP LINING - CONTRACT 21  
**NESS AVENUE**

3RD MH E. OF CAVALIER DR. (PL) TO  
2ND MH E. OF CAVALIER DR. (PL)

SHEET	OF
77	119
CAD FILE DRAWING NUMBER I3220c-161-766.dwg	
CITY DRAWING NUMBER <b>9843</b>	

\\CD1201-F02\work\_group\1112\active\111213220\drawing\402\_design\sheet\_files\13220c-161-766.dwg  
 Date: 2011-12-19 3:48pm Login: Ammeter, Wes