

**SEWER JUNCTION INFORMATION  
FOR SEWER ID MA20000649**

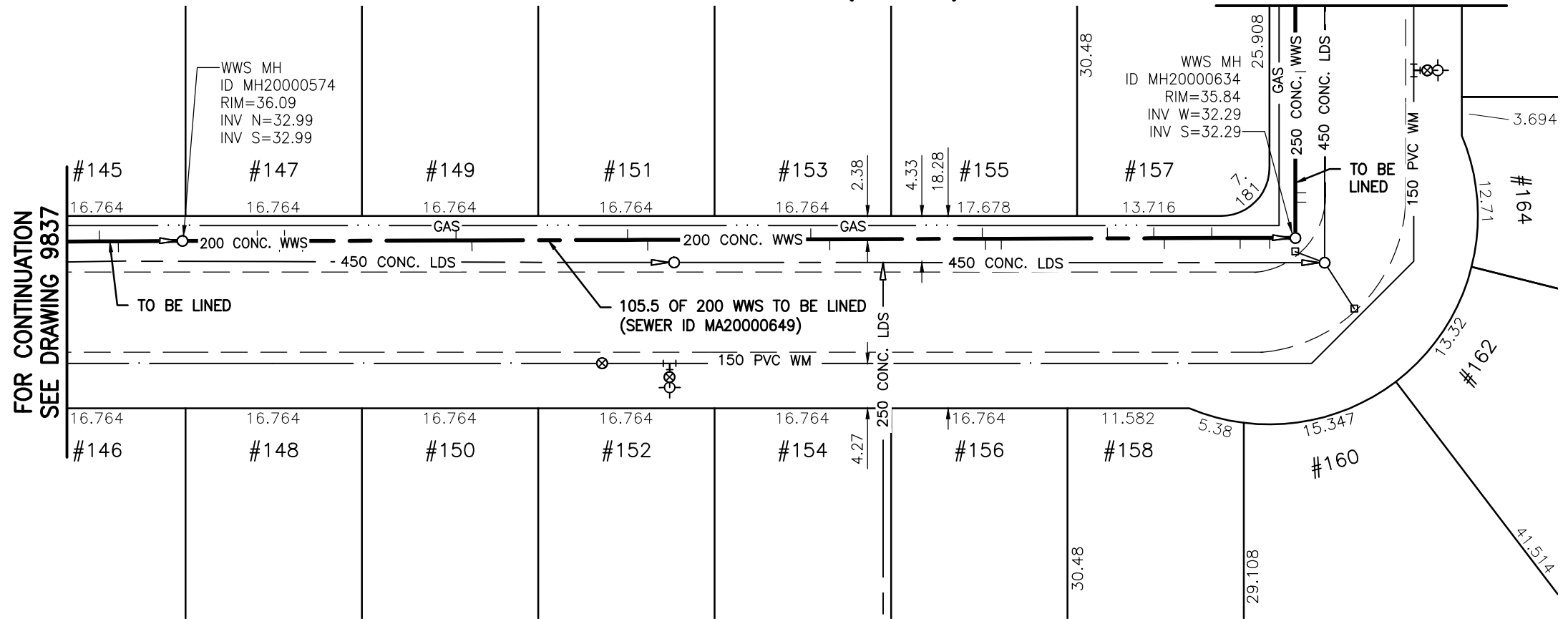
REFERENCE—METERS NORTH OF MANHOLE MH2000574

DIST. FROM REF. MANHOLE	JUNCTION DIA.	CLOCK REF.	SERVICE TYPE	DESCRIPTION
7.1	150	10	CN	-
9.2	150	02	CN	CAPPED
9.7	150	10	JN	CAPPED
11.4	150	02	JN	CAPPED
26.0	150	10	CN	-
27.5	150	02	CN	-
42.3	150	10	CN	LIVE
44.2	150	02	CN	-
59.7	150	10	CN	LIVE
61.5	150	02	CN	LIVE
76.0	150	10	CN	LIVE
76.3	150	02	CN	LIVE
77.8	150	02	JN	CAPPED
87.9	150	10	JN	CAPPED
92.3	150	10	CN	LIVE
93.3	150	02	CN	-
97.8	150	10	JN	CAPPED
100.5	150	02	CN	LIVE
103.3	150	02	JN	CAPPED

ALL JUNCTION INFORMATION  
BASED ON CCTV INSPECTION

**DANBURY BAY (E. LEG)**

FOR CONTINUATION  
SEE DRAWING 9839



**WARNING**

IF POWER EQUIPMENT OR EXPLOSIVES ARE TO BE USED FOR EXCAVATION ON THIS PROJECT THE CONTRACTOR MUST:

- 1) NOTIFY THE GAS COMPANY OF THE PROPOSED LOCATION OF EXCAVATION.
- 2) TAKE PRECAUTION TO AVOID DAMAGE TO GAS COMPANY INSTALLATIONS.

SEE PROVINCIAL REGULATION 140/92 FOR DETAILS

**METRIC**

WHOLE NUMBERS INDICATE MILLIMETRES  
DECIMALIZED NUMBERS INDICATE METRES

BENCH MARK: W. side Cavalier Dr., S. of Fairlane Ave., Tblt. in E. Conc. foundation No. 664 Cavalier Dr., 2.5 m S. & 0.2 m below brick of N.E. Cor. of Dwelling.



Certificate of Authorization

Stantec Consulting Ltd.

No. 1301 Date: \_\_\_\_\_

BID OPPORTUNITY 927-2011

**LOCATION APPROVED  
UNDERGROUND STRUCTURES**

B.M.	40-026		
ELEV.	237.452m		
SUPV. U/G STRUCTURES COMMITTEE	DATE		
NOTE:	LOCATION OF UNDERGROUND STRUCTURES AS SHOWN ARE BASED ON THE BEST INFORMATION AVAILABLE BUT NO GUARANTEE IS GIVEN THAT ALL EXISTING UTILITIES ARE SHOWN OR THAT THE GIVEN LOCATIONS ARE EXACT. CONFIRMATION OF EXISTENCE AND EXACT LOCATION OF ALL SERVICES MUST BE OBTAINED FROM THE INDIVIDUAL UTILITIES BEFORE PROCEEDING WITH CONSTRUCTION.		
NO.	REVISIONS	DATE	BY



**Stantec Consulting Ltd.**

905 Waverley Street, Winnipeg, Manitoba  
Tel 204-489-5900 Fax 204-453-9012

DESIGNED BY	J.K.H.	CHECKED BY	W.A.B.
DRAWN BY	K.R.	APPROVED BY	H.A.K.
HOR. SCALE:	1:500	RELEASED FOR CONSTRUCTION:	
VERTICAL:	N/A	DATE	2011.10.05

ENGINEER'S SEAL

CONSULTANT DRAWING NO.  
**C-169**



**THE CITY OF WINNIPEG  
WATER AND WASTE DEPARTMENT**

**2011 SEWER RENEWALS  
BY CIPP LINING - CONTRACT 21  
DANBURY BAY (E. LEG)  
1ST MH N. OF DANBURY BY. (S. LEG) (PL) TO  
MH AT DANBURY BY. (N. LEG) (PL)**

SHEET	OF	
<b>72</b>		<b>119</b>
CAD FILE DRAWING NUMBER I3220c-161-766.dwg		
CITY DRAWING NUMBER <b>9838</b>		