

**SEWER JUNCTION INFORMATION  
FOR SEWER ID MA20004087**

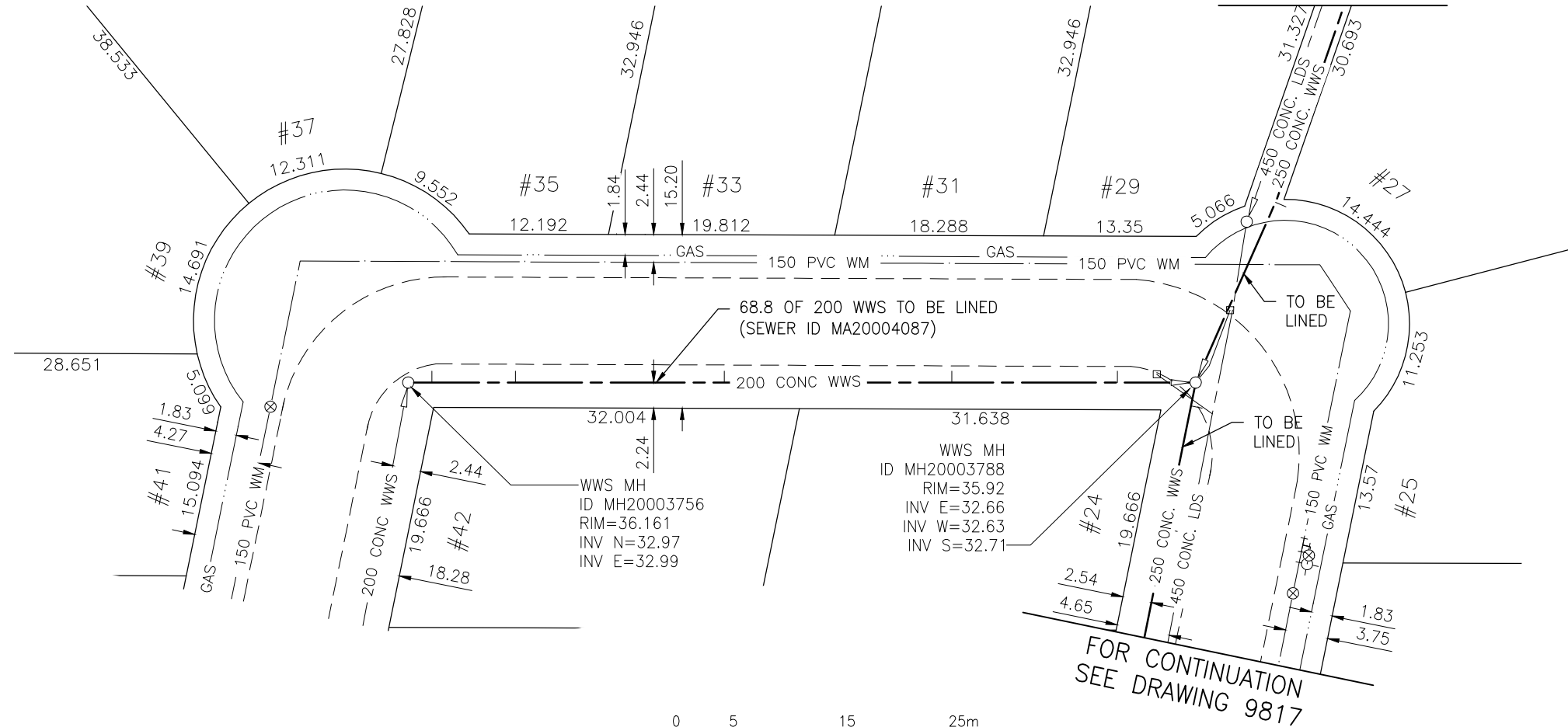
REFERENCE—METERS NORTH OF MANHOLE MH20003756

DIST. FROM REF. MANHOLE	JUNCTION DIA.	CLOCK REF.	SERVICE TYPE	DESCRIPTION
2.1	100	10	JN	LIVE
9.4	100	10	JN	-
27.7	100	10	JN	-
47.6	100	10	JN	-
62.1	100	10	JN	-

ALL JUNCTION INFORMATION  
BASED ON CCTV INSPECTION

**MAGELLAN BAY (W. LEG)**

FOR CONTINUATION  
SEE DRAWING 9819



**WARNING**

IF POWER EQUIPMENT OR EXPLOSIVES ARE TO BE USED FOR EXCAVATION ON THIS PROJECT THE CONTRACTOR MUST:

- 1) NOTIFY THE GAS COMPANY OF THE PROPOSED LOCATION OF EXCAVATION.
- 2) TAKE PRECAUTION TO AVOID DAMAGE TO GAS COMPANY INSTALLATIONS.

SEE PROVINCIAL REGULATION 140/92 FOR DETAILS

**METRIC**

WHOLE NUMBERS INDICATE MILLIMETRES  
DECIMALIZED NUMBERS INDICATE METRES

BENCH MARK: UNSTABLE - S. W. Cor.  
Henday Bay & Westwood Dr., (S. Leg of  
Henday Bay) Tblt in E. Conc. foundation No.  
57 Henday Bay 0.8 m S. & 0.2 below stucco  
of N.E. Cor. of dwelling.



Certificate of Authorization

Stantec Consulting Ltd.

No. 1301 Date: \_\_\_\_\_

BID OPPORTUNITY 927-2011

LOCATION APPROVED  
UNDERGROUND STRUCTURES

B.M.	41-013		
ELEV.	236.582m		
NO.	REVISIONS	DATE	BY



**Stantec Consulting Ltd.**

905 Waverley Street, Winnipeg, Manitoba  
Tel 204-489-5900 Fax 204-453-9012

DESIGNED BY	J.K.H.	CHECKED BY	W.A.B.
DRAWN BY	K.R.	APPROVED BY	H.A.K.
HOR. SCALE:	1:500	RELEASED FOR CONSTRUCTION:	
VERTICAL:	N/A	DATE	2011.10.04

ENGINEER'S SEAL

CONSULTANT DRAWING NO.  
C-149



**THE CITY OF WINNIPEG**  
WATER AND WASTE DEPARTMENT

2011 SEWER RENEWALS  
BY CIPP LINING - CONTRACT 21  
**MAGELLAN BAY (W. LEG)**

MH AT MAGELLAN BY. (S. LEG) (PL) TO  
MH AT MAGELLAN BY. (PL) (N. LEG)

SHEET	OF
52	119
CAD FILE DRAWING NUMBER I3220c-I40-766.dwg	
CITY DRAWING NUMBER <b>9818</b>	