



**SEWER JUNCTION INFORMATION
FOR SEWER ID MA20004056**

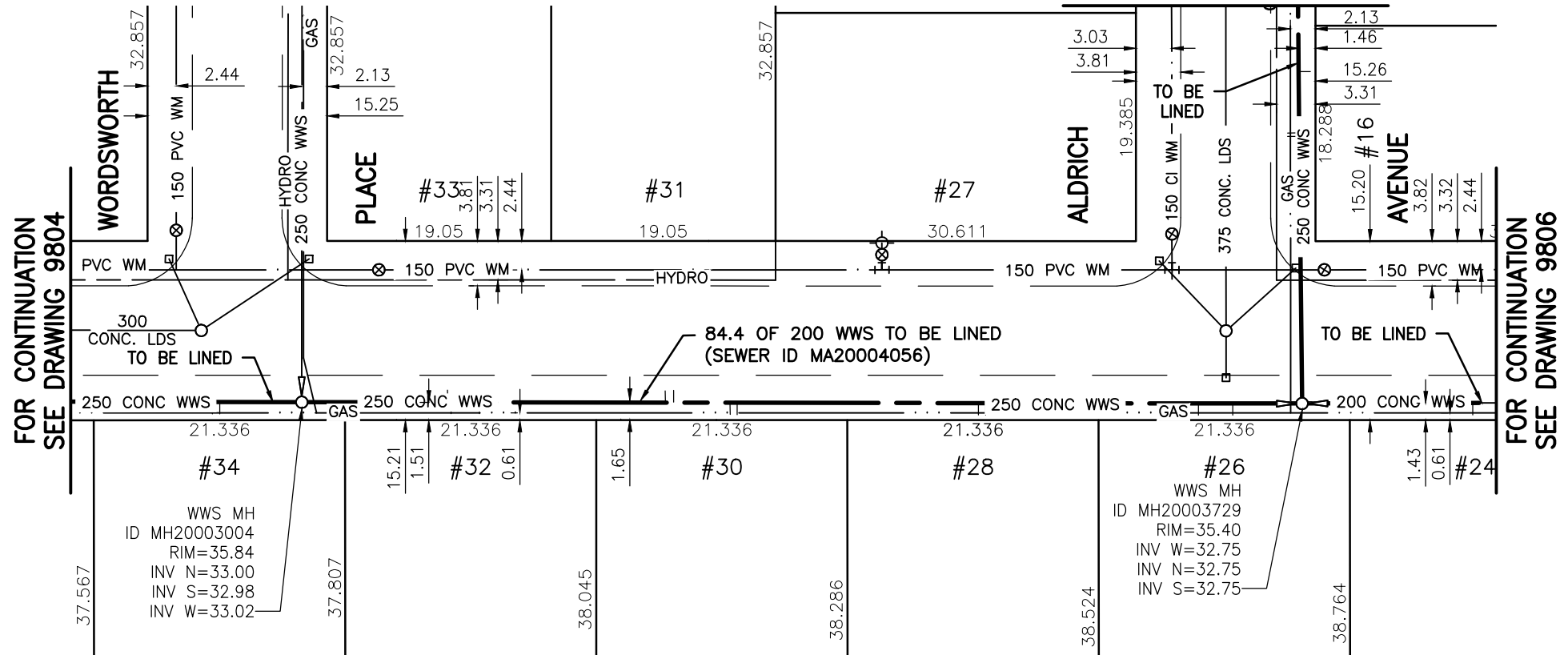
REFERENCE—METERS NORTH OF MANHOLE MH20003004

DIST. FROM REF. MANHOLE	JUNCTION DIA.	CLOCK REF.	SERVICE TYPE	DESCRIPTION
12.4	150	10	CN	LIVE
12.7	150	02	CN	LIVE
15.1	150	02	CN	-
30.9	150	09	CN	-
31.6	150	10	CN	-
36.3	150	02	CNI	LIVE
37.0	150	02	CN	-
57.5	150	03	CN	LIVE
58.1	150	02	JN	LIVE
76.2	150	02	CN	LIVE
79.1	150	02	CN	-

ALL JUNCTION INFORMATION
BASED ON CCTV INSPECTION

WORDSWORTH WAY (E. LEG)

FOR CONTINUATION
SEE DRAWING 9814



FOR CONTINUATION
SEE DRAWING 9804

FOR CONTINUATION
SEE DRAWING 9806



WARNING

IF POWER EQUIPMENT OR EXPLOSIVES ARE TO BE USED FOR EXCAVATION ON THIS PROJECT THE CONTRACTOR MUST:

- 1) NOTIFY THE GAS COMPANY OF THE PROPOSED LOCATION OF EXCAVATION.
- 2) TAKE PRECAUTION TO AVOID DAMAGE TO GAS COMPANY INSTALLATIONS.

SEE PROVINCIAL REGULATION 140/92 FOR DETAILS

METRIC

WHOLE NUMBERS INDICATE MILLIMETRES
DECIMALIZED NUMBERS INDICATE METRES

BENCH MARK: S.W. Cor. Browning Blvd. & Pinehurst Cres., 19 mm dia. x 6.1 m I.B. in valve box, 0.3 m N. of S.L Browning Blvd. & 0.3 m W. of W.L. Pinehurst Cres.



Certificate of Authorization

Stantec Consulting Ltd.

No. 1301 Date: _____

BID OPPORTUNITY 927-2011

LOCATION APPROVED
UNDERGROUND STRUCTURES

B.M. 41-019 ELEV. 236.056m			
SUPV. U/G STRUCTURES COMMITTEE	DATE		
NOTE:			
LOCATION OF UNDERGROUND STRUCTURES AS SHOWN ARE BASED ON THE BEST INFORMATION AVAILABLE BUT NO GUARANTEE IS GIVEN THAT ALL EXISTING UTILITIES ARE SHOWN OR THAT THE GIVEN LOCATIONS ARE EXACT. CONFIRMATION OF EXISTENCE AND EXACT LOCATION OF ALL SERVICES MUST BE OBTAINED FROM THE INDIVIDUAL UTILITIES BEFORE PROCEEDING WITH CONSTRUCTION.			
NO.	REVISIONS	DATE	BY



Stantec Consulting Ltd.

905 Waverley Street, Winnipeg, Manitoba
Tel 204-489-5900 Fax 204-453-9012

DESIGNED BY	J.K.H.	CHECKED BY	W.A.B.
DRAWN BY	K.R.	APPROVED BY	H.A.K.
HOR. SCALE:	1:500	RELEASED FOR CONSTRUCTION:	
VERTICAL:	N/A	DATE	2011.10.04

ENGINEER'S SEAL

CONSULTANT DRAWING NO.
C-136



THE CITY OF WINNIPEG
WATER AND WASTE DEPARTMENT

2011 SEWER RENEWALS
BY CIPP LINING - CONTRACT 21
WORDSWORTH WAY (E. LEG)

MH AT WORDSWORTH PL. (PL) TO
MH AT ALDRICH AV.

SHEET	OF	
39		119
CAD FILE DRAWING NUMBER I3220c-116-766.dwg		
CITY DRAWING NUMBER 9805		

\\CD1201-F02\work_group\1112\active\111213220\drawing\402_design\sheet_files\13220c-116-766.dwg
 Date: 2011-12-19 3:31pm Login: Ammeter, Wes