

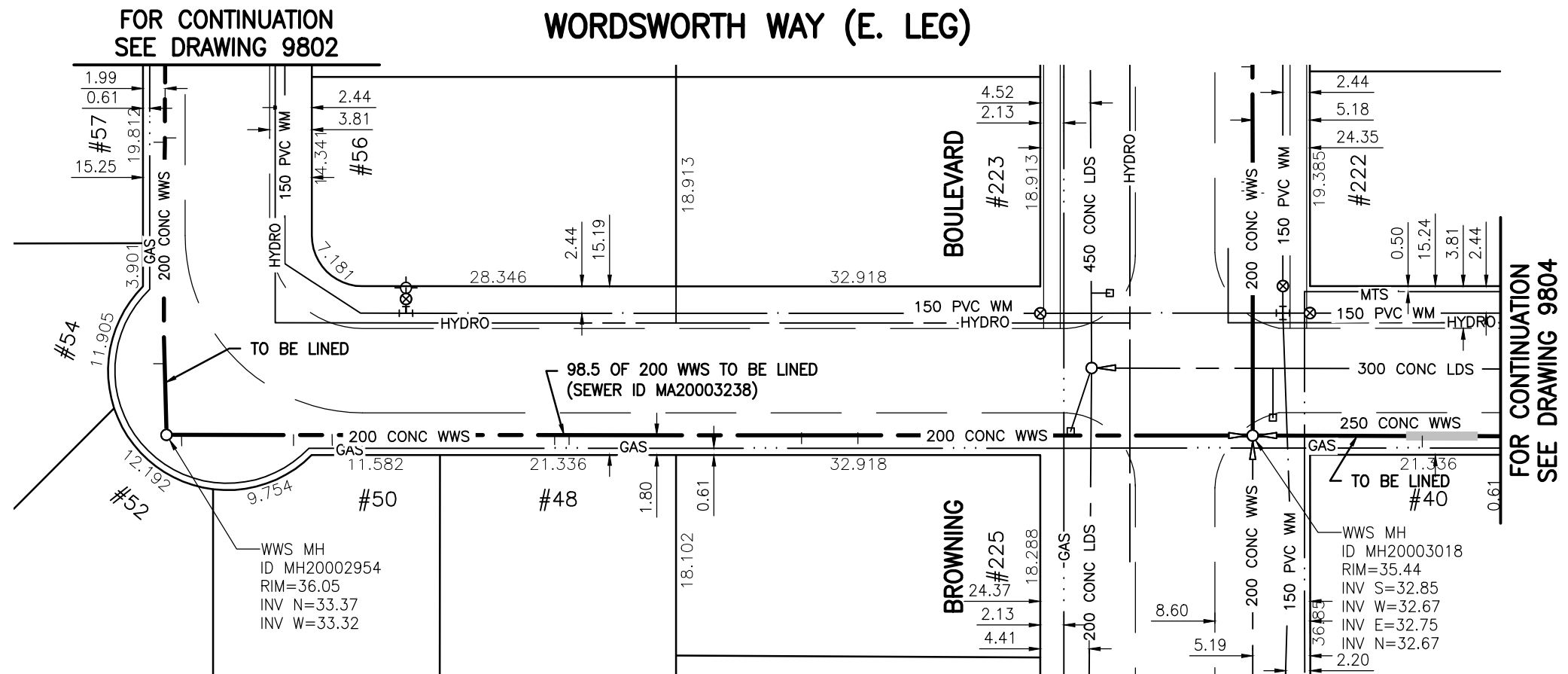


**SEWER JUNCTION INFORMATION  
FOR SEWER ID MA20003238**

REFERENCE—METERS NORTH OF MANHOLE MH20002954

DIST. FROM REF. MANHOLE	JUNCTION DIA.	CLOCK REF.	SERVICE TYPE	DESCRIPTION
1.6	100	03	CNI	LIVE
11.4	100	03	CNI	LIVE
15.0	100	02	JN	-
35.1	100	03	JN	-
36.4	100	02	CN	LIVE
57.4	100	02	CX	-
62.5	100	03	JN	CAPPED

ALL JUNCTION INFORMATION  
BASED ON CCTV INSPECTION



**WARNING**

IF POWER EQUIPMENT OR EXPLOSIVES ARE TO BE USED FOR EXCAVATION ON THIS PROJECT THE CONTRACTOR MUST:

- 1) NOTIFY THE GAS COMPANY OF THE PROPOSED LOCATION OF EXCAVATION.
- 2) TAKE PRECAUTION TO AVOID DAMAGE TO GAS COMPANY INSTALLATIONS.

SEE PROVINCIAL REGULATION 140/92 FOR DETAILS

**METRIC**

WHOLE NUMBERS INDICATE MILLIMETRES  
DECIMALIZED NUMBERS INDICATE METRES

BENCH MARK: S.W. Cor. Browning Blvd. & Pinehurst Cres., 19 mm dia. x 6.1 m I.B. in valve box, 0.3 m N. of S.L Browning Blvd. & 0.3 m W. of W.L. Pinehurst Cres.



Certificate of Authorization

Stantec Consulting Ltd.

No. 1301 Date: \_\_\_\_\_

BID OPPORTUNITY 927-2011

LOCATION APPROVED  
UNDERGROUND STRUCTURES

B.M.	41-019		
ELEV.	236.056m		
NO.	REVISIONS	DATE	BY



**Stantec Consulting Ltd.**

905 Waverley Street, Winnipeg, Manitoba  
Tel 204-489-5900 Fax 204-453-9012

DESIGNED BY	J.K.H.	CHECKED BY	W.A.B.
DRAWN BY	K.R.	APPROVED BY	H.A.K.
HOR. SCALE:	1:500	RELEASED FOR CONSTRUCTION:	
VERTICAL:	N/A	DATE	2011.10.04

ENGINEER'S SEAL

CONSULTANT DRAWING NO.  
**C-134**



**THE CITY OF WINNIPEG**  
WATER AND WASTE DEPARTMENT

**2011 SEWER RENEWALS**  
BY CIPP LINING - CONTRACT 21  
**WORDSWORTH WAY (E. LEG)**

MH AT WORDSWORTH WY. (S. LEG) TO  
MH AT BROWNING BV.

SHEET	OF
<b>37</b>	<b>119</b>
CAD FILE DRAWING NUMBER I3220c-116-766.dwg	
CITY DRAWING NUMBER <b>9803</b>	

\\CD1201-F02\work\_group\1112\active\111213220\drawing\402\_design\sheet\_files\13220c-116-766.dwg  
 Date: 2011-12-19 3:31pm Login: Ammeter, Wes