



**SEWER JUNCTION INFORMATION
FOR SEWER ID MA20002825**

REFERENCE—METERS SOUTH OF MANHOLE MH20002564

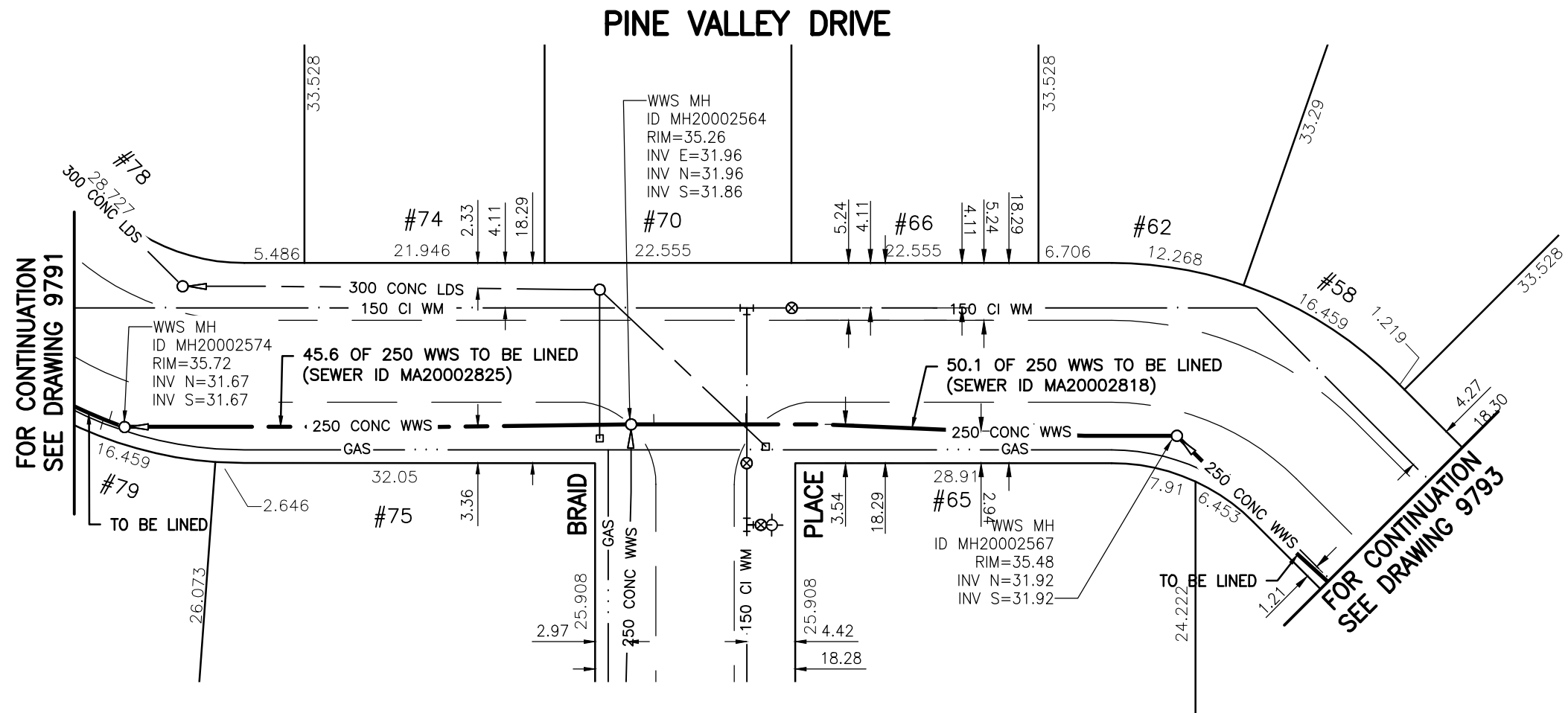
DIST. FROM REF. MANHOLE	JUNCTION DIA.	CLOCK REF.	SERVICE TYPE	DESCRIPTION
17.5	100	02	CN	-

**SEWER JUNCTION INFORMATION
FOR SEWER ID MA20002818**

REFERENCE—METERS SOUTH OF MANHOLE MH20002567

DIST. FROM REF. MANHOLE	JUNCTION DIA.	CLOCK REF.	SERVICE TYPE	DESCRIPTION
12.9	100	02	CNI	-
26.3	100	02	CN	LIVE
47.7	100	01	CN	LIVE

ALL JUNCTION INFORMATION
BASED ON CCTV INSPECTION



FOR CONTINUATION
SEE DRAWING 9791

FOR CONTINUATION
SEE DRAWING 9793

WARNING

IF POWER EQUIPMENT OR EXPLOSIVES ARE TO BE USED FOR EXCAVATION ON THIS PROJECT THE CONTRACTOR MUST:

- 1) NOTIFY THE GAS COMPANY OF THE PROPOSED LOCATION OF EXCAVATION.
- 2) TAKE PRECAUTION TO AVOID DAMAGE TO GAS COMPANY INSTALLATIONS.

SEE PROVINCIAL REGULATION 140/92 FOR DETAILS

METRIC

WHOLE NUMBERS INDICATE MILLIMETRES
DECIMALIZED NUMBERS INDICATE METRES

BENCH MARK: S.W. Cor. Browning Blvd. & Pinehurst Cres., 19 mm dia. x 6.1 m I.B. in valve box, 0.3 m N. of S.L. Browning Blvd. & 0.3 m W. of W.L. Pinehurst Cres.



Certificate of Authorization

Stantec Consulting Ltd.

No. 1301 Date: _____

BID OPPORTUNITY 927-2011

**LOCATION APPROVED
UNDERGROUND STRUCTURES**

SUPV. U/G STRUCTURES COMMITTEE DATE

NOTE:
LOCATION OF UNDERGROUND STRUCTURES AS SHOWN ARE BASED ON THE BEST INFORMATION AVAILABLE BUT NO GUARANTEE IS GIVEN THAT ALL EXISTING UTILITIES ARE SHOWN OR THAT THE GIVEN LOCATIONS ARE EXACT. CONFIRMATION OF EXISTENCE AND EXACT LOCATION OF ALL SERVICES MUST BE OBTAINED FROM THE INDIVIDUAL UTILITIES BEFORE PROCEEDING WITH CONSTRUCTION.

NO.	REVISIONS	DATE	BY



Stantec Consulting Ltd.

905 Waverley Street, Winnipeg, Manitoba
Tel 204-489-5900 Fax 204-453-9012

DESIGNED BY	J.K.H.	CHECKED BY	W.A.B.
DRAWN BY	K.R.	APPROVED BY	H.A.K.
HOR. SCALE:	1:500	RELEASED FOR CONSTRUCTION:	
VERTICAL:	N/A	DATE	2011.10.03

ENGINEER'S SEAL

CONSULTANT DRAWING NO.
C-123



**THE CITY OF WINNIPEG
WATER AND WASTE DEPARTMENT**

**2011 SEWER RENEWALS
BY CIPP LINING - CONTRACT 21
PINE VALLEY DRIVE**

1ST MH S. OF BRAID PL. TO
1ST MH N. OF BRAID PL.

SHEET OF	26 OF 119
CAD FILE DRAWING NUMBER	13220c-116-766.dwg
CITY DRAWING NUMBER	9792