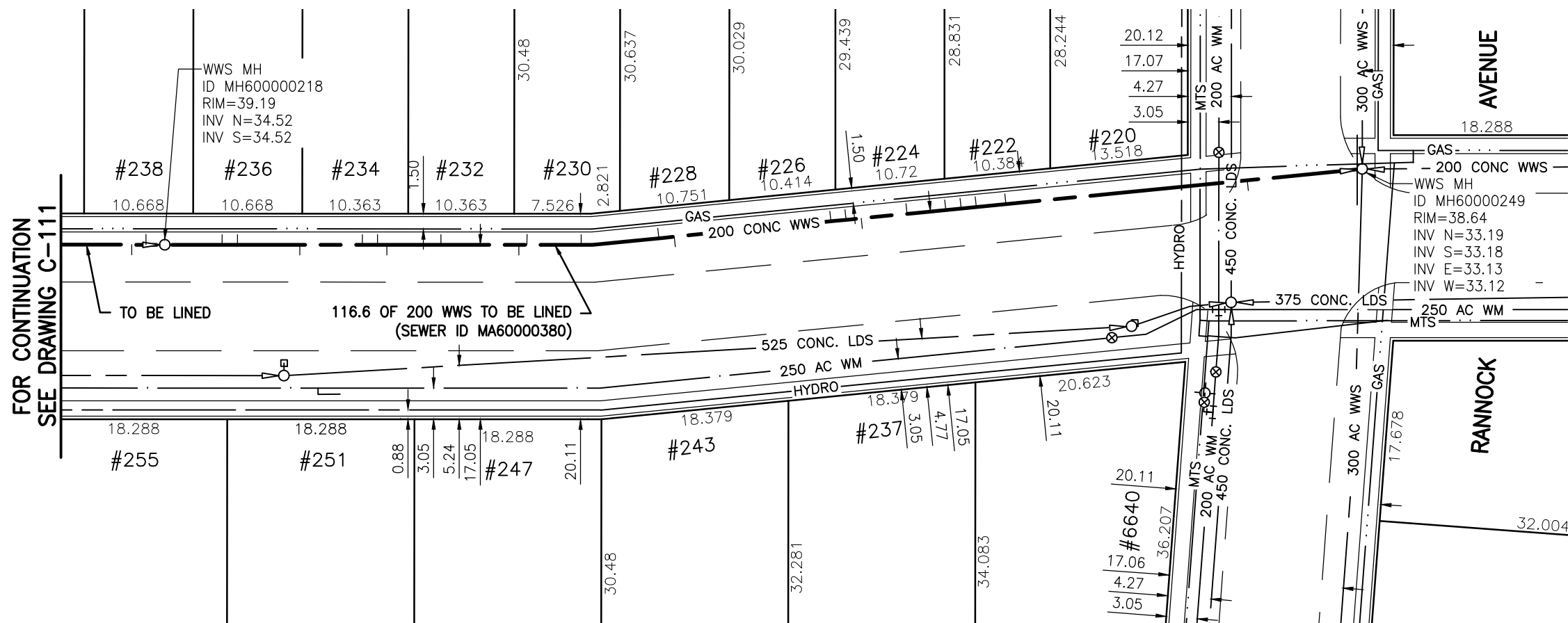


**SEWER JUNCTION INFORMATION
FOR SEWER ID MA6000380**

REFERENCE—METERS NORTH OF MANHOLE MH6000218

DIST. FROM REF. MANHOLE	JUNCTION DIA.	CLOCK REF.	SERVICE TYPE	DESCRIPTION
5.6	150	10	CN	-
7.1	200	11	CN	-
13.2	150	01	CN	-
19.3	150	11	CN	W DE
20.8	150	11	CX	LIVE. FRACTURED
21.7	150	01	CX	CRACKED
27.0	150	11	CN	-
34.6	150	01	CN	-
35.5	200	12	CNI	LIVE
40.7	150	11	CN	-
48.3	150	11	CN	-
49.8	150	01	CN	-
65.1	150	11	CN	LIVE. W RM
66.6	200	12	CNI	W RM
68.1	150	02	CN	W EH
72.6	150	11	CN	LIVE
86.4	150	11	CN	-
87.9	150	11	CNI	LIVE
89.4	150	09	CN	LIVE
92.3	150	09	CN	W DE
116.0	150	06	JX	SSL & ADJ HOLES

ALL JUNCTION INFORMATION
BASED ON CCTV INSPECTION



WARNING

IF POWER EQUIPMENT OR EXPLOSIVES ARE TO BE USED FOR EXCAVATION ON THIS PROJECT THE CONTRACTOR MUST:

- 1) NOTIFY THE GAS COMPANY OF THE PROPOSED LOCATION OF EXCAVATION.
- 2) TAKE PRECAUTION TO AVOID DAMAGE TO GAS COMPANY INSTALLATIONS.

SEE PROVINCIAL REGULATION 140/92 FOR DETAILS

METRIC

WHOLE NUMBERS INDICATE MILLIMETRES
DECIMALIZED NUMBERS INDICATE METRES

BENCH MARK: 83R553 — S.W. Cor. Cullen Dr. & Rannock St.; Tblt. on top of 0.05 m dia. X 2.4 m iron pipe, 2.1 m N. of S.L. of Rannock Ave. & on W.L. of Cullen Dr. produced from the S.



Certificate of Authorization

Stantec Consulting Ltd.

No. 1301 Date: _____

BID OPPORTUNITY 927-2011

LOCATION APPROVED
UNDERGROUND STRUCTURES

B.M.	48-039		
ELEV.	238.765		
SUPV. U/G STRUCTURES COMMITTEE	DATE		
NO.	REVISIONS	DATE	BY

NOTE:
LOCATION OF UNDERGROUND STRUCTURES AS SHOWN ARE BASED ON THE BEST INFORMATION AVAILABLE BUT NO GUARANTEE IS GIVEN THAT ALL EXISTING UTILITIES ARE SHOWN OR THAT THE GIVEN LOCATIONS ARE EXACT. CONFIRMATION OF EXISTENCE AND EXACT LOCATION OF ALL SERVICES MUST BE OBTAINED FROM THE INDIVIDUAL UTILITIES BEFORE PROCEEDING WITH CONSTRUCTION.



Stantec Consulting Ltd.

905 Waverley Street, Winnipeg, Manitoba
Tel 204-489-5900 Fax 204-453-9012

DESIGNED BY	J.K.H.	CHECKED BY	W.A.B.
DRAWN BY	K.R.	APPROVED BY	H.A.K.
HOR. SCALE:	1:500	RELEASED FOR CONSTRUCTION:	
VERTICAL:	N/A	DATE	2011.09.30

ENGINEER'S SEAL

CONSULTANT DRAWING NO.
C-112



**THE CITY OF WINNIPEG
WATER AND WASTE DEPARTMENT**

**2011 SEWER RENEWALS
BY CIPP LINING - CONTRACT 21
CULLEN DRIVE
2ND MH N. OF HARWOOD CR. (CL) TO
MH AT RANNOCK AV.**

SHEET	OF	
15		119
CAD FILE DRAWING NUMBER I3220c-101-766.dwg		
CITY DRAWING NUMBER 9781		

\\CD1201-F02\work_group\1112\active\111213220\drawing\402_design\sheet_files\13220c-101-766.dwg
 Date: 2011-12-19 3:41pm Login: Ammeter, Wes