

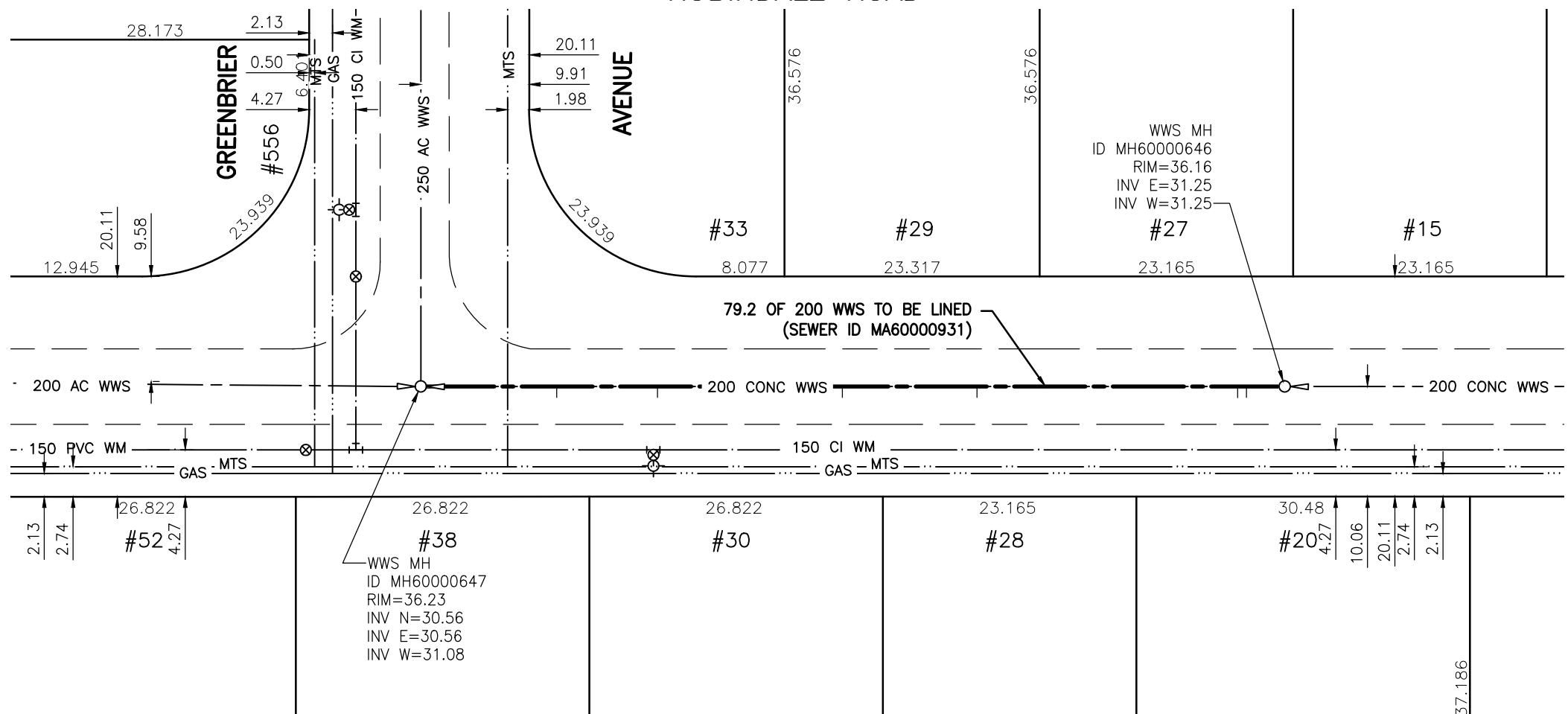


**SEWER JUNCTION INFORMATION
FOR SEWER ID MA6000931**

REFERENCE—METERS WEST OF MANHOLE MH6000646

DIST. FROM REF. MANHOLE	JUNCTION DIA.	CLOCK REF.	SERVICE TYPE	DESCRIPTION
3.5	100	12	JN	—
4.3	100	12	CX	LIVE
28.1	100	12	JN	—
40.4	100	12	JN	LIVE
57.3	100	12	JN	LIVE
66.5	100	12	JN	LIVE

ALL JUNCTION INFORMATION
BASED ON CCTV INSPECTION



WARNING

IF POWER EQUIPMENT OR EXPLOSIVES ARE TO BE USED FOR EXCAVATION ON THIS PROJECT THE CONTRACTOR MUST:

- 1) NOTIFY THE GAS COMPANY OF THE PROPOSED LOCATION OF EXCAVATION.
- 2) TAKE PRECAUTION TO AVOID DAMAGE TO GAS COMPANY INSTALLATIONS.

SEE PROVINCIAL REGULATION 140/92 FOR DETAILS

METRIC

WHOLE NUMBERS INDICATE MILLIMETRES
DECIMALIZED NUMBERS INDICATE METRES

BENCH MARK: W. side Pepperloaf Cres. N. of Dunelm Lane, Tblt. in S. Conc. foundation of Roblin Park Community Club N. 640 Pepperloaf Cres., 1.0 m W. of S.E. Cor. of Bldg. & 0.5 m below stucco.



Certificate of Authorization

Stantec Consulting Ltd.

No. 1301 Date: _____

BID OPPORTUNITY 927-2011

**LOCATION APPROVED
UNDERGROUND STRUCTURES**

B.M. 48-020
ELEV. 236.668m

SUPV. U/G STRUCTURES COMMITTEE DATE

NOTE:
LOCATION OF UNDERGROUND STRUCTURES AS SHOWN ARE BASED ON THE BEST INFORMATION AVAILABLE BUT NO GUARANTEE IS GIVEN THAT ALL EXISTING UTILITIES ARE SHOWN OR THAT THE GIVEN LOCATIONS ARE EXACT. CONFIRMATION OF EXISTENCE AND EXACT LOCATION OF ALL SERVICES MUST BE OBTAINED FROM THE INDIVIDUAL UTILITIES BEFORE PROCEEDING WITH CONSTRUCTION.

NO.	REVISIONS	DATE	BY



Stantec Consulting Ltd.

905 Waverley Street, Winnipeg, Manitoba
Tel 204-489-5900 Fax 204-453-9012

DESIGNED BY	J.K.H.	CHECKED BY	W.A.B.
DRAWN BY	K.R.	APPROVED BY	H.A.K.
HOR. SCALE:	1:500	RELEASED FOR CONSTRUCTION:	
VERTICAL:	N/A		
DATE	2011.09.30	DATE	

ENGINEER'S SEAL

CONSULTANT DRAWING NO.
C-109



THE CITY OF WINNIPEG

WATER AND WASTE DEPARTMENT

**2011 SEWER RENEWALS
BY CIPP LINING - CONTRACT 21
ROBINDALE ROAD**

**1ST MH W. OF PEPPERLOAF CR. TO
MH AT GREENBRIER AV.**

SHEET OF	12 OF 119
CAD FILE DRAWING NUMBER	13220c-101-766.dwg
CITY DRAWING NUMBER	9778

\\CD1201-F02\work_group\1112\active\111213220\drawing\402_design\sheet_files\13220c-101-766.dwg
 Date: 2011-12-19 3:41pm Login: Ammeter, Wes