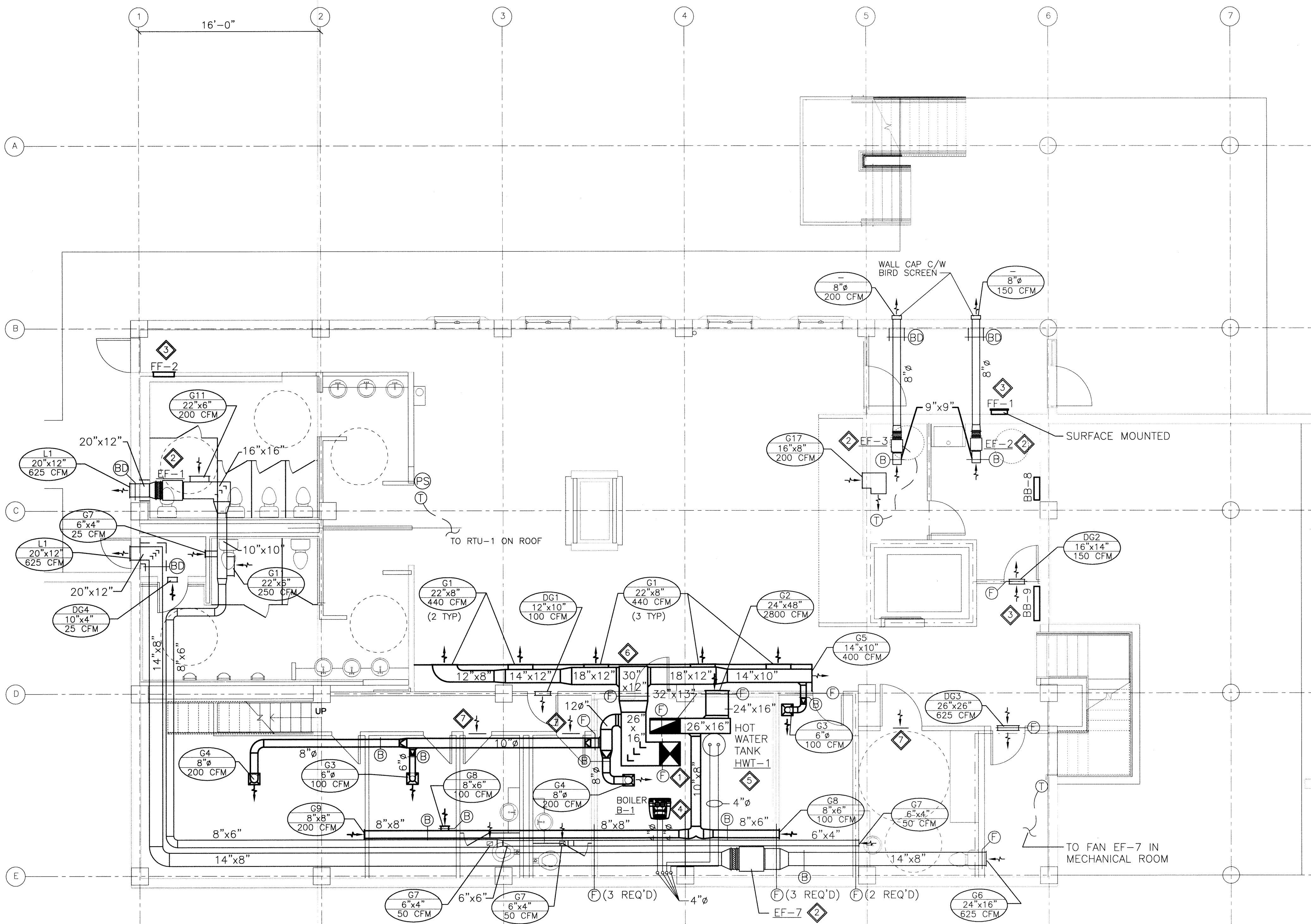


File Name: P:\Projects\2011\11-0902-04\Doc Control\ToBeIssued\DWG\11-0902-04_M7.0-Rev 1.dwg - Tab: 24x36-11-0902-04M07 Plotted By: Dderoche 12/02/03 [Fri 3:28pm] 24"x36"/PLOT SCALE: 1:1



1 BASEMENT FLOOR PLAN - HVAC

5 0 5 10 15 FT.
SCALE: 3/16"=1'-0" (24" X 36")
N.T.S. (11" X 17")

GRILLE SCHEDULE			
GRILLE No.	E.H. PRICE DESIGNATION	COMMENTS	
G1	22"x8"/520D/F/L/A/B15	SUPPLY GRILLE C/W BALANCE DAMPER	
G2	24"x48"/530D/F/S/A/B15	RETURN GRILLE C/W BALANCE DAMPER	
G3	6"/12"x12"/SCD/31/3C/B15	SUPPLY GRILLE	
G4	8"/24"x24"/SCD/31/3C/B15	SUPPLY GRILLE	
G5	14"x10"/520D/F/L/A/B15	SUPPLY GRILLE C/W BALANCE DAMPER	
G6	24"x16"/530/F/L/A/B15	EXHAUST GRILLE	
G7	6"x4"/530D/F/L/A/B15	EXHAUST GRILLE C/W BALANCE DAMPER	
G8	8"x6"/530/F/L/A/B15	RETURN GRILLE	
G9	14"x8"/530/F/L/A/B15	RETURN GRILLE	
G10	8"x6"/530/F/L/A/B15	EXHAUST GRILLE	
G11	22"x6"/530D/F/L/A/B15	EXHAUST GRILLE C/W BALANCE DAMPER	
G12	14"/24"x24"/SCD/31/3C/B15	SUPPLY GRILLE	
G13	22"x8"/520D/F/L/A/B15	SUPPLY GRILLE C/W BALANCE DAMPER	
G14	36"x12"/80D/F/A/B15	RETURN GRILLE C/W BALANCE DAMPER	
G15	12"x12"/80/TB/B15	EXHAUST GRILLE	
G16	24"x24"/80/TB/B15	RETURN GRILLE	
G17	16"x8"/530/F/L/A/B15	EXHAUST GRILLE	

DOOR GRILLE SCHEDULE		
LOUVER No.	SIZE (WxH)	ACCEPTABLE MATERIAL
DG1	12"x10"	E.H.PRICE MODEL: 12"x10"/ATGH/BF/B15
DG2	16"x14"	E.H.PRICE MODEL: 16"x14"/ATGH/BF/B15
DG3	26"x26"	E.H.PRICE MODEL: 26"x26"/ATGH/BF/B15
DG4	10"x4"	E.H.PRICE MODEL: 10"x4"/ATGH/BF/B15
DG5	24"x16"	E.H.PRICE MODEL: 24"x16"/ATGH/BF/B15
DG6	28"x28"	E.H.PRICE MODEL: 28"x28"/ATGH/BF/B15

LOUVER SCHEDULE		
LOUVER No.	SIZE (WxH)	ACCEPTABLE MATERIAL
L1	20"x12"	E.H.PRICE MODEL ZE439 C/W BIRD SCREEN

EXHAUST FAN SCHEDULE								
FAN No.	DESCRIPTION	CFM	S.P. (IN. W.G.)	FAN RPM	MOTOR RPM	POWER (H.P.)	VOLTS PH	SONES
EF-1	INLINE CABINET EXHAUST FAN	625	0.25	809	1,725	1/4	115/1	6.5
EF-2	INLINE CABINET EXHAUST FAN	150	0.2	1,550	1,550	1/40	115/1	3.9
EF-3	INLINE CABINET EXHAUST FAN	200	0.2	1,300	1,300	1/50	115/1	3.7
EF-4	ROOFTOP EXHAUST FAN C/W ROOF CURB	200	0.2	1,300	1,300	1/60	115/1	2.8
EF-5	ROOFTOP EXHAUST FAN C/W ROOF CURB	500	0.2	916	1,725	1/4	115/1	4.5
EF-6	ROOFTOP GREASE EXHAUST FAN C/W CURB AND HINGE KIT	2,800	0.5	834	1,284	1.0	208/3	
EF-7	INLINE CABINET EXHAUST FAN	625	0.4	715	1,725	1/3	115/1	4.3
MAKE / MODEL								
EF-1	GREENHECK / BSQ-120-4							
EF-2	GREENHECK / SQ-60-D							
EF-3	GREENHECK / SQ-75-G							
EF-4	GREENHECK / CUE-070-G							
EF-5	GREENHECK / CUBE-099-4							
EF-6	CAPTIVE AIRE / NCA14FA							
EF-7	GREENHECK / BSQ-160HP-3							

RETURN FAN SCHEDULE								
FAN No.	DESCRIPTION	CFM	S.P. (IN. W.G.)	FAN RPM	MOTOR RPM	POWER (H.P.)	VOLTS PH	SONES
RTU-1 RF	INLINE CABINET RETURN FAN	3,200	0.25	439	1,725	1/2	115/1	7.5
MAKE / MODEL								
RTU-1 RF	GREENHECK / BSQ-240-5							

GENERAL NOTES:

- PERFORM WORK IN ACCORDANCE WITH ALL APPLICABLE CODES AND REGULATIONS.
- REVIEW EQUIPMENT LOCATIONS WITH CONSULTANT PRIOR TO INSTALLATION.
- EQUIPMENT LOCATIONS, DUCT AND PIPE ROUTING INDICATED ON THE DRAWINGS IS APPROXIMATE ONLY. CONFIRM IN THE FIELD. REROUTE DUCTWORK AND PIPING AS REQUIRED TO ELIMINATE FIELD INTERFERENCES, WITH BUILDING STRUCTURES, ELECTRICAL, ETC.. CONFIRM CHANGES WITH CONSULTANT. CO-ORDINATE WORK WITH ALL SUBTRADES. WHERE DIMENSIONS ARE INDICATED FOR PIPING, DUCTWORK, DUCT SIZES, EQUIPMENT SIZES, ETC. THESE ARE FOR BIDDING PURPOSES ONLY. THE CONTRACTOR IS RESPONSIBLE TO VERIFY ALL DIMENSIONS IN THE FIELD PRIOR TO ORDERING EQUIPMENT AND COMMENCING INSTALLATION WITHOUT EXTRA CHARGES TO THE PROJECT. THE CONTRACTOR IS RESPONSIBLE TO ENSURE ALL EQUIPMENT, DUCTWORK AND PIPING FITS IN THE SPACE AVAILABLE AND TO MAINTAIN THE GENERAL DESIGN INTENT FOR THE SYSTEMS.
- CONFORM TO SMACNA STANDARDS FOR SUPPLY AND INSTALLATION OF DUCTWORK.
- SEAL ALL WALL AND ROOF PENETRATIONS AND DUCTWORK WATER AND AIR TIGHT.
- PROVIDE ALL WALL AND ROOF PENETRATIONS AND CURBS.
- DESIGN, SUPPLY, AND INSTALL NATURAL GAS PIPING TO NEW ROOFTOP UNITS (RTU-1 AND RTU-2) NEW BOILER (B-1), AND NEW HOT WATER TANK (HWT-1) AS PER CAN/CGA B149.1-M95.
- ALL NEW AND MODIFIED EXPOSED DUCTWORK SHALL BE PAINTED AS PER INTERIOR DESIGNER'S INSTRUCTIONS. RUN DUCTWORK AT HIGH LEVEL.
- CONTROLS CONTRACTOR TO PROVIDE HVAC CONTROLS AS PER DRAWING M18.0.
- CONTACT STRUCTURAL CONSULTANT TO CONFIRM LOCATIONS OF FLOOR AND WALL PENETRATIONS PRIOR TO CUTTING.
- FIRE SEAL ALL PENETRATIONS THROUGH FIRE WALLS AND FLOORS.

KEY NOTES:

- SUPPLY AND INSTALL ALL ASSOCIATED SUPPLY AND RETURN DUCTWORK AND ACCESSORIES FOR NEW ROOFTOP UNIT RTU-1.
- SUPPLY AND INSTALL NEW EXHAUST FAN EF-1, EF-2, EF-3 AND EF-7 C/W FILTER AND ASSOCIATED DUCTWORK. CONNECT TO DUCTWORK USING FLEXIBLE CONNECTIONS. HANG FROM STRUCTURE USING VIBRATION ISOLATORS.
- ELECTRICAL CONTRACTOR TO SUPPLY AND INSTALL NEW FORCE FLOW HEATERS FF-1 AND FF-2, AND NEW BASEBOARD HEATERS BB-8 AND BB-9. LOCATIONS ARE SHOWN DIAGRAMMATICALLY AND TO BE CO-ORDINATED WITH ELECTRICAL CONTRACTOR.
- SUPPLY AND INSTALL NEW BOILER B-1 AND ASSOCIATED AIR INTAKE AND VENT PIPING AS SHOWN ON DETAIL 4 ON DRAWING M13.0.
- SUPPLY AND INSTALL AIR INTAKE AND VENT PIPING FOR NEW HOT WATER TANK HWT-1 AS SHOWN ON DETAIL 4 ON DRAWING M13.0.
- DUCTWORK TO BE CONCEALED IN ARCHITECTURAL ENCLOSURE BY OTHERS.
- CO-ORDINATE WITH STRUCTURAL TRADES TO UNDERCUT WASHROOM DOORS BY 1/2" TO ALLOW FOR MAKEUP AIR INTO WASHROOMS.

THIS DRAWING MUST NOT BE SCALED.

THE GENERAL CONTRACTOR SHALL VERIFY ALL DIMENSIONS, DATUMS, AND LEVELS PRIOR TO COMMENCEMENT OF WORK. ALL ERRORS AND OMISSIONS TO BE REPORTED TO NUMBER TEN ARCHITECTURAL GROUP BEFORE PROCEEDING.

VARIATIONS AND MODIFICATIONS TO WORK SHOWN ON THESE DRAWINGS SHALL NOT BE CARRIED OUT WITHOUT WRITTEN PERMISSION OF NUMBER TEN ARCHITECTURAL GROUP.

THIS DRAWING IS THE EXCLUSIVE PROPERTY OF NUMBER TEN ARCHITECTURAL GROUP AND THE COPYRIGHT IN THE SAME BEING RESERVED TO THEM. IT MAY BE REPRODUCED ONLY WITH THE PERMISSION OF NUMBER TEN ARCHITECTURAL GROUP, IN WHICH CASE THE REPRODUCTION MUST BEAR THEIR NAME.

REVISED/ ISSUED/ PLOTTED	DATE
Rev. 1 - ISSUED FOR TENDER	FEBRUARY 03/2012
Rev. 0 - ISSUED FOR TENDER	NOVEMBER 21/2011

LEGEND:

—	NEW EQUIPMENT OR DUCTWORK
- - -	EXISTING EQUIPMENT OR DUCTWORK
- - - - -	CONTROL WIRING
=====	EXTERNALLY INSULATED DUCTWORK
EF	EXHAUST FAN
B	BOILER
HWT	HOT WATER TANK
RAD	RADIATOR
CH	CABINET HEATER
BB-	BASEBOARD HEATER
FF-	FORCE FLOW HEATER
→ ⊗ ←	SUPPLY AIR
→ ⊠ ←	RETURN AIR
⊠ →	EXHAUST AIR
(B)	BALANCE DAMPER
(T)	THERMOSTAT
(BD)	BACKDRAFT DAMPER C/W DUCT ACCESS DOOR
(PS)	PRESSURE SENSOR
(F)	1 HOUR FIRE DAMPER C/W DUCT ACCESS DOOR
G1 8"ø 160 CFM	GRILLE NO. NECK SIZE AIR FLOW
L1 12"x12" 160 CFM	LOUVER NO. LOUVER SIZE AIR FLOW @ 500 FPM

SCALE VERIFIED BY: *[Signature]*

numberTEN
architectural group

winnipeg MB regina SK victoria BC
204 942.0981 306 721.501 250 360.2106

architecture • interior design • graphic design

PEGUIS PAVILION
UPGRADES AND ENTRY ADDITION
BIDDING #913-2011

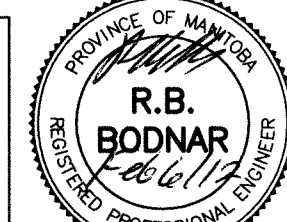
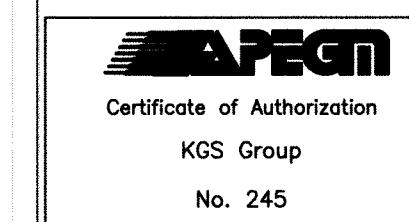
project

BASEMENT FLOOR PLAN
HVAC - NEW

sheet title

KGS GROUP | CONSULTING
ENGINEERS

consultant



seal

drawn by: VJH

checked by: RBB

project no. 2011026

scale: 3/16"=1'-0"

date: August 15, 2011

sheet no. M7.0