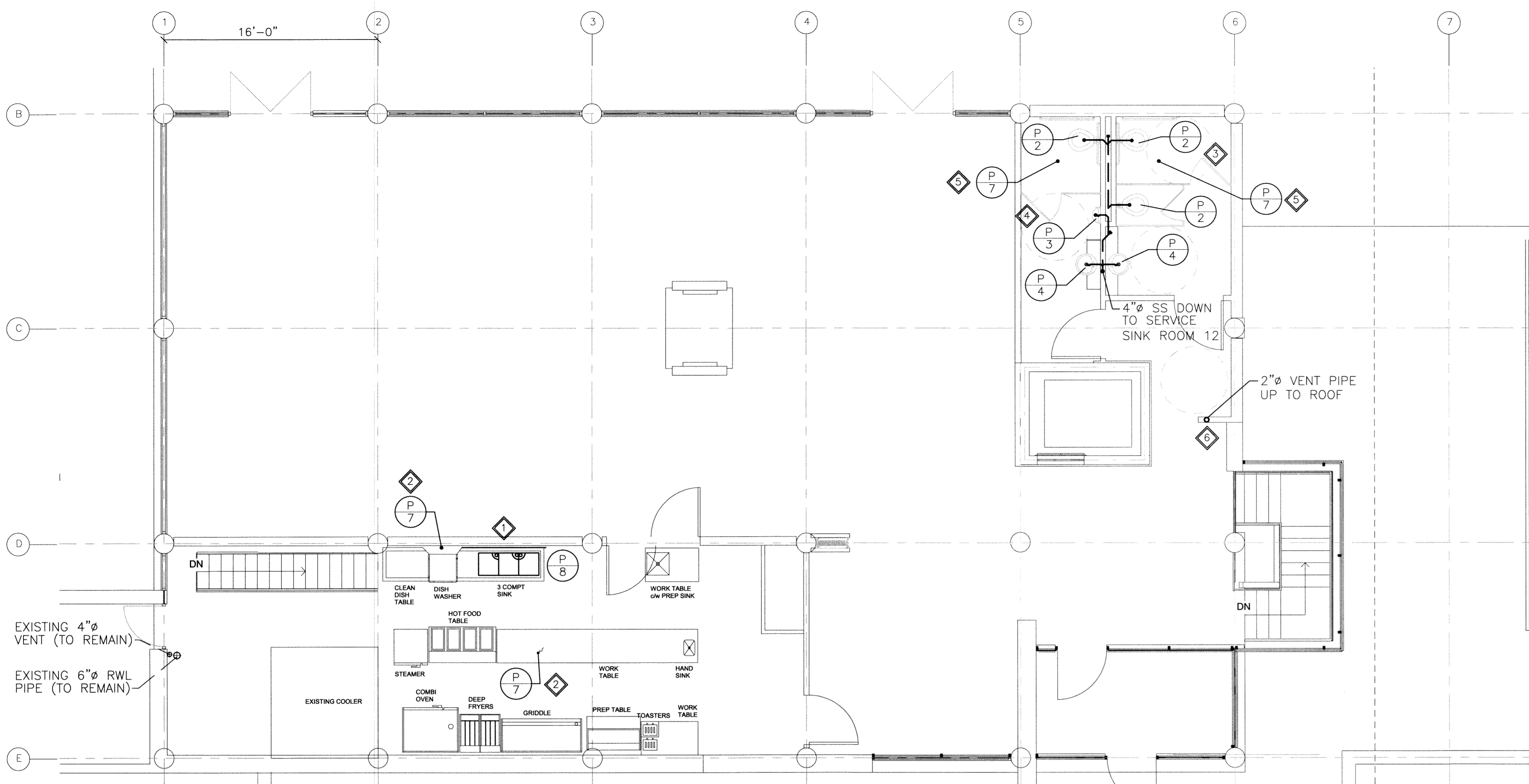
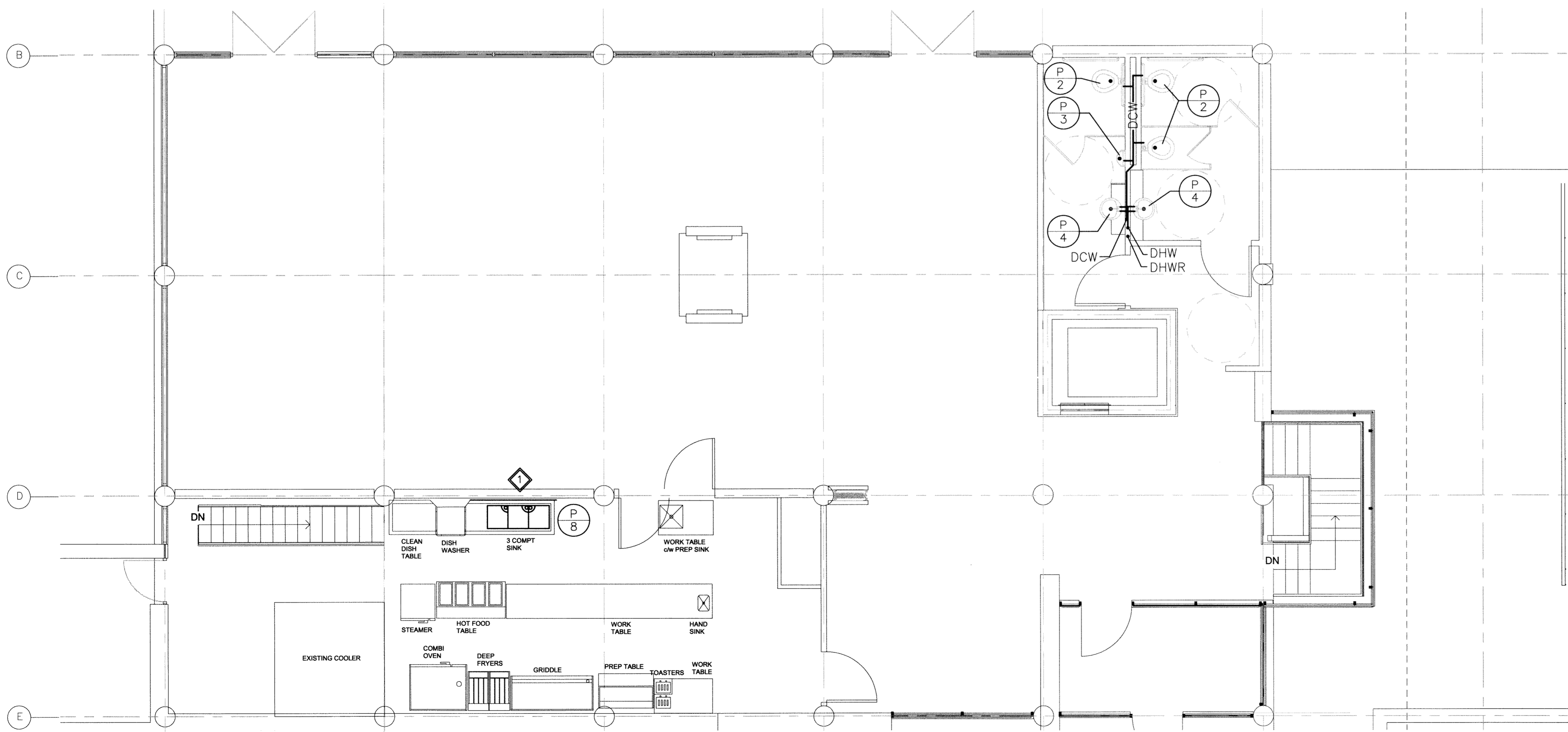


File Name: P:\Projects\2011\11-0902-04 Doc Control\ToBeIssued\DWG\11-0902-04_M4.0-Rev 0.dwg — Tab: 24x36-11-0902-04M4.0 Plotted By: DDerocche 11/11/21 [Mon 1:27pm]
 24x36/PLOT SCALE: 1:1



1 - MAIN FLOOR PLAN - NEW SANITARY SEWER PIPING



2 - MAIN FLOOR PLAN - NEW DOMESTIC WATER PIPING

GENERAL NOTES:

1. CONFORM TO CANADIAN PLUMBING CODE AND ALL LOCAL CODES AND AUTHORITY HAVING JURISDICTION FOR DESIGN, SUPPLY AND INSTALLATION OF PLUMBING AND VENT SYSTEM. VENT CONCEALED INSIDE WALLS ACCORDING TO CODE.
2. EQUIPMENT LOCATIONS, DUCT AND PIPE ROUTING INDICATED ON THE DRAWINGS IS APPROXIMATE ONLY. CONFIRM IN THE FIELD. REROUTE DUCTWORK AND PIPING AS REQUIRED TO ELIMINATE FIELD INTERFERENCES, WITH BUILDING STRUCTURES, ELECTRICAL, ETC.. CONFIRM CHANGES WITH CONSULTANT. CO-ORDINATE WORK WITH ALL SUBTRADES. WHERE DIMENSIONS ARE INDICATED FOR PIPING, DUCTWORK, DUCT SIZES, EQUIPMENT SIZES, ETC. THESE ARE FOR BIDDING PURPOSES ONLY. THE CONTRACTOR IS RESPONSIBLE TO VERIFY ALL DIMENSIONS IN THE FIELD PRIOR TO ORDERING EQUIPMENT AND COMMENCING INSTALLATION WITHOUT EXTRA CHARGES TO THE PROJECT. THE CONTRACTOR IS RESPONSIBLE TO ENSURE ALL EQUIPMENT, DUCTWORK AND PIPING FITS IN THE SPACE AVAILABLE AND TO MAINTAIN THE GENERAL DESIGN INTENT FOR THE SYSTEMS.
3. INSULATE DOMESTIC HOT WATER AND DOMESTIC COLD WATER PIPING. RUN PIPING IN CEILING SPACE AND DROP DOWN TO FIXTURES INSIDE PLUMBING WALLS WHERE APPLICABLE.
4. PROVIDE ALL CUTTING AND PATCHING REQUIRED FOR NEW PIPING. FINISH ALL PENETRATIONS TO MATCH EXISTING. SEAL WATER AND AIR TIGHT.
5. PROVIDE TRAP PRIMERS FOR ALL NEW FLOOR DRAINS.
6. PROVIDE SHUT-OFF VALVES AT ALL FIXTURES.
7. PROVIDE CLEANOUTS AS PER PLUMBING CODE.
8. CONFIRM ADEQUATE PIPE SLOPES EXISTS FOR NEW DRAINAGE PIPING.
9. CONFORM TO CAN/CSA-B149.1-05 NATURAL GAS AND PROPANE INSTALLATION CODE.
10. ALL NEW DOMESTIC WATER PIPING SHALL BE INSULATED WITH 1/2" THICK FIBREGLASS INSULATION C/W ASJ.
11. SEE DRAWING M11.0 FOR DOMESTIC WATER PIPING SCHEMATIC.
12. TYPICAL KITCHEN LAYOUT SHOWN FOR FUTURE REFERENCE PURPOSES ONLY. THE FOLLOWING EQUIPMENT SHOWN ON THE DRAWINGS IS FOR FUTURE REFERENCE AND NOT INCLUDED IN THE SCOPE OF THIS CONTRACT.
 - DISHWASHER
 - PREP SINK
 - HAND SINK
 - HOT FOOD TABLE
 - STEAMER
 - PREP TABLE
 - TOASTERS
 - GRIDDLE
 - DEEP FRYERS
 - COMBINATION OVEN
 - FREEZER
13. COORDINATE PIPE ROUTING WITH STRUCTURAL TRADES TO AVOID STRUCTURAL BEAM AND INTERFERENCES. PROVIDE ALL PENETRATIONS AND SEAL WATER AND AIR TIGHT.
14. FIRE SEAL ALL PENETRATIONS THROUGH FIRE WALLS AND FLOORS.

KEY NOTES:

1. PROVIDE AND INSTALL NEW TRIPLE COMPARTMENT SINK. CONNECT TO EXISTING DOMESTIC WATER AND DRAINAGE LINES.
2. PROVIDE NEW FLOOR DRAIN. CONNECT TO EXISTING DRAINAGE LINE.
3. SUPPLY AND INSTALL NEW WALL HUNG WATER CLOSETS COMPLETE WITH SENSOR FLUSH VALVES. SUPPLY AND INSTALL NEW LAVATORY SINK COMPLETE WITH HANDS FREE SENSOR FAUCET. PROVIDE NEW DRAINAGE AND DOMESTIC WATER PIPING. LOCATE ALL NEW PIPING IN PLUMBING WALL AND RUN DOWN TO SERVICE ROOM 12. TIE IN SANITARY SEWER LINE TO MAIN DRAINAGE BRANCH TO LIFT STATION LS-1. REFER TO DETAIL 2 ON DRAWING M12.0.
4. SUPPLY AND INSTALL NEW WALL HUNG WATER CLOSET COMPLETE WITH SENSOR FLUSH VALVE. SUPPLY AND INSTALL NEW URINAL COMPLETE WITH HANDS FREE SENSOR FAUCET. PROVIDE NEW DRAINAGE AND DOMESTIC WATER PIPING. LOCATE ALL NEW PIPING IN PLUMBING WALL AND RUN DOWN TO SERVICE ROOM 12. TIE IN SANITARY SEWER LINE TO MAIN DRAINAGE BRANCH TO LIFT STATION LS-1. REFER TO DETAIL 2 ON DRAWING M12.0.
5. SUPPLY AND INSTALL NEW FLOOR DRAIN. PROVIDE NEW DRAINAGE PIPING AND TIE IN TO MAIN DRAINAGE BRANCH TO LIFT STATION LS-1 IN SERVICE ROOM 12. RUN PIPING AS HIGH AS POSSIBLE TO BASEMENT CEILING.
6. RUN VENT PIPE FROM NEW LIFT STATIONS INSIDE ARCHITECTURAL WALL UP TO ROOF. PROVIDE ALL ROOF PENETRATIONS AND SEAL WATER AND AIR TIGHT.

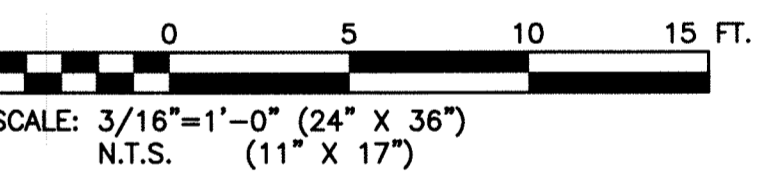
THIS DRAWING MUST NOT BE SCALED.
 THE GENERAL CONTRACTOR SHALL VERIFY ALL DIMENSIONS, DATUMS, AND LEVELS PRIOR TO COMMENCEMENT OF WORK. ALL ERRORS AND OMISSIONS TO BE REPORTED TO NUMBER TEN ARCHITECTURAL GROUP BEFORE PROCEEDING.
 VARIATIONS AND MODIFICATIONS TO WORK SHOWN ON THESE DRAWINGS SHALL NOT BE CARRIED OUT WITHOUT WRITTEN PERMISSION OF NUMBER TEN ARCHITECTURAL GROUP.
 THIS DRAWING IS THE EXCLUSIVE PROPERTY OF NUMBER TEN ARCHITECTURAL GROUP AND THE COPYRIGHT IN THE SAME BEING RESERVED TO THEM. IT MAY BE REPRODUCED ONLY WITH THE PERMISSION OF NUMBER TEN ARCHITECTURAL GROUP, IN WHICH CASE THE REPRODUCTION MUST BEAR THEIR NAME.

REVISED / ISSUED / PLOTTED	DATE

LEGEND:

- EXISTING EQUIPMENT OR PIPING TO BE REMOVED
- EXISTING EQUIPMENT OR PIPING TO REMAIN
- SANITARY SEWER
- DHW — DOMESTIC HOT WATER SUPPLY
- DCW — DOMESTIC COLD WATER SUPPLY
- DHWR — DOMESTIC HOT WATER RETURN
- RWL — RAINWATER LEADER
- FLOOR MOUNTED BARRIER FREE WATER CLOSET
- WALL HUNG BARRIER FREE WATER CLOSET
- URINAL
- BARRIER FREE LAVATORY
- JANITOR'S SINK
- BARRIER FREE DRINKING FOUNTAIN
- FLOOR DRAIN
- TRIPLE COMPARTMENT SINK

SCALE VERIFIED BY:



numberTEN
architectural group

winnipeg MB regina SK victoria BC
 204 942.0981 306 721.1501 250 360.2106

architecture • interior design • graphic design

PEGUIS PAVILION
 UPGRADES AND ADDITION
 BIDDING #913-2011

project
MAIN FLOOR PLAN
 SANITARY SEWER PIPING AND
 DOMESTIC WATER PIPING - NEW

sheet title
KGS GROUP CONSULTING ENGINEERS

consultant



seal
 drawn by: VJH
 checked by: RBB
 project no. 2011026

scale: 3/16"=1'-0"
 date: November 17, 2011
 sheet no. **M4.0**