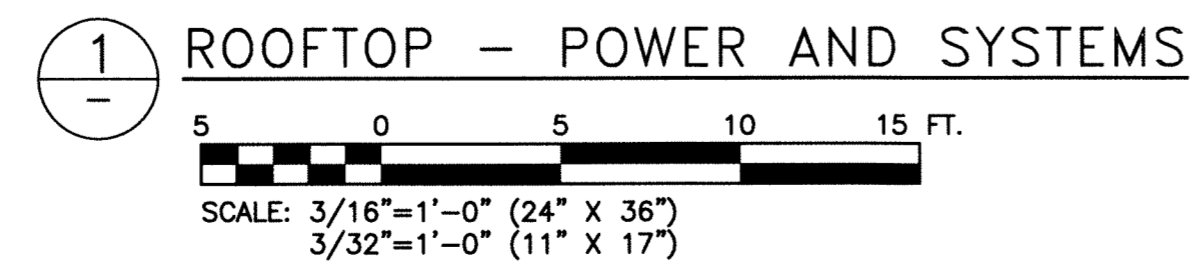
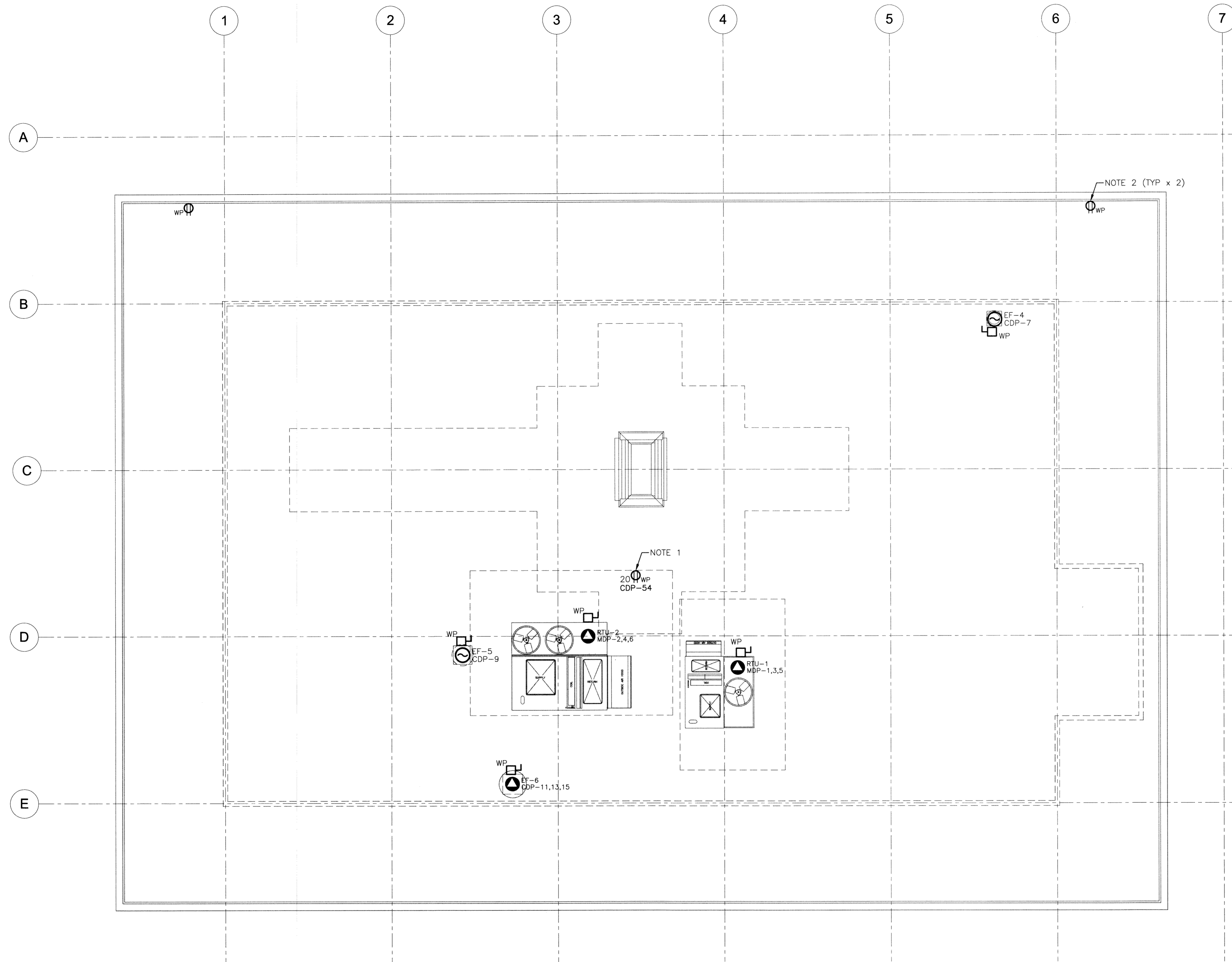


File Name: P:\Projects\2011\11-0902-04\DocControl\Tobiasaured\DWG\11-0902-04\_E5.0-Rev 0.dwg - Tab: E5.0 Plotted By: Dderochte 11/11/21 [Mon 12:54pm]  
 24.358/PLOT SCALE: 1:1



THIS DRAWING MUST NOT BE SCALED.

THE GENERAL CONTRACTOR SHALL VERIFY ALL DIMENSIONS, DATUMS, AND LEVELS PRIOR TO COMMENCEMENT OF WORK. ALL ERRORS AND OMISSIONS TO BE REPORTED TO NUMBER TEN ARCHITECTURAL GROUP BEFORE PROCEEDING.

VARIOUS AND MODIFICATIONS TO WORK SHOWN ON THESE DRAWINGS SHALL NOT BE CARRIED OUT WITHOUT WRITTEN PERMISSION OF NUMBER TEN ARCHITECTURAL GROUP.

THIS DRAWING IS THE EXCLUSIVE PROPERTY OF NUMBER TEN ARCHITECTURAL GROUP AND THE COPYRIGHT IN THE SAME BEING RESERVED TO THEM. IT MAY BE REPRODUCED ONLY WITH THE PERMISSION OF NUMBER TEN ARCHITECTURAL GROUP, IN WHICH CASE THE REPRODUCTION MUST BEAR THEIR NAME.

REVISED/ ISSUED/ PLOTTED	DATE

Rev. 0 - ISSUED FOR TENDER      NOVEMBER 21/2011

- NOTES:**
1. ROOF TOP RECEPTACLE TO BE WEATHERPROOF AND MOUNTED 0.75m AFG.
  2. PROVIDE POWER CIRCUITS, SWITCHABLE ON LIGHTING PANEL FOR SEASONAL ROPE LIGHTS.

**numberTEN**  
 architectural group

winnipeg MB regina SK victoria BC  
 204 942.0981 306 721.1501 250 360.2106

architecture • interior design • graphic design

PEGUIS PAVILION  
 UPGRADES AND ENTRY ADDITION  
 BIDDING #913-2011

project

ELECTRICAL  
 ROOFTOP  
 POWER AND SYSTEMS

sheet title

**KGS GROUP** | CONSULTING  
 ENGINEERS

consultant

**MAPEGN**  
 Certificate of Authorization  
 KGS Group  
 No. 245

PROVINCE OF MANITOBA  
**PAWLKIEWICZ**  
 Member  
 23235  
 REG. PROFESSIONAL ENGINEER

scale: 3/16"=1'-0"  
 date: August 15, 2011

drawn by: JPL  
 checked by: [Signature]

project no. 2011026      sheet no. **E5.0**