

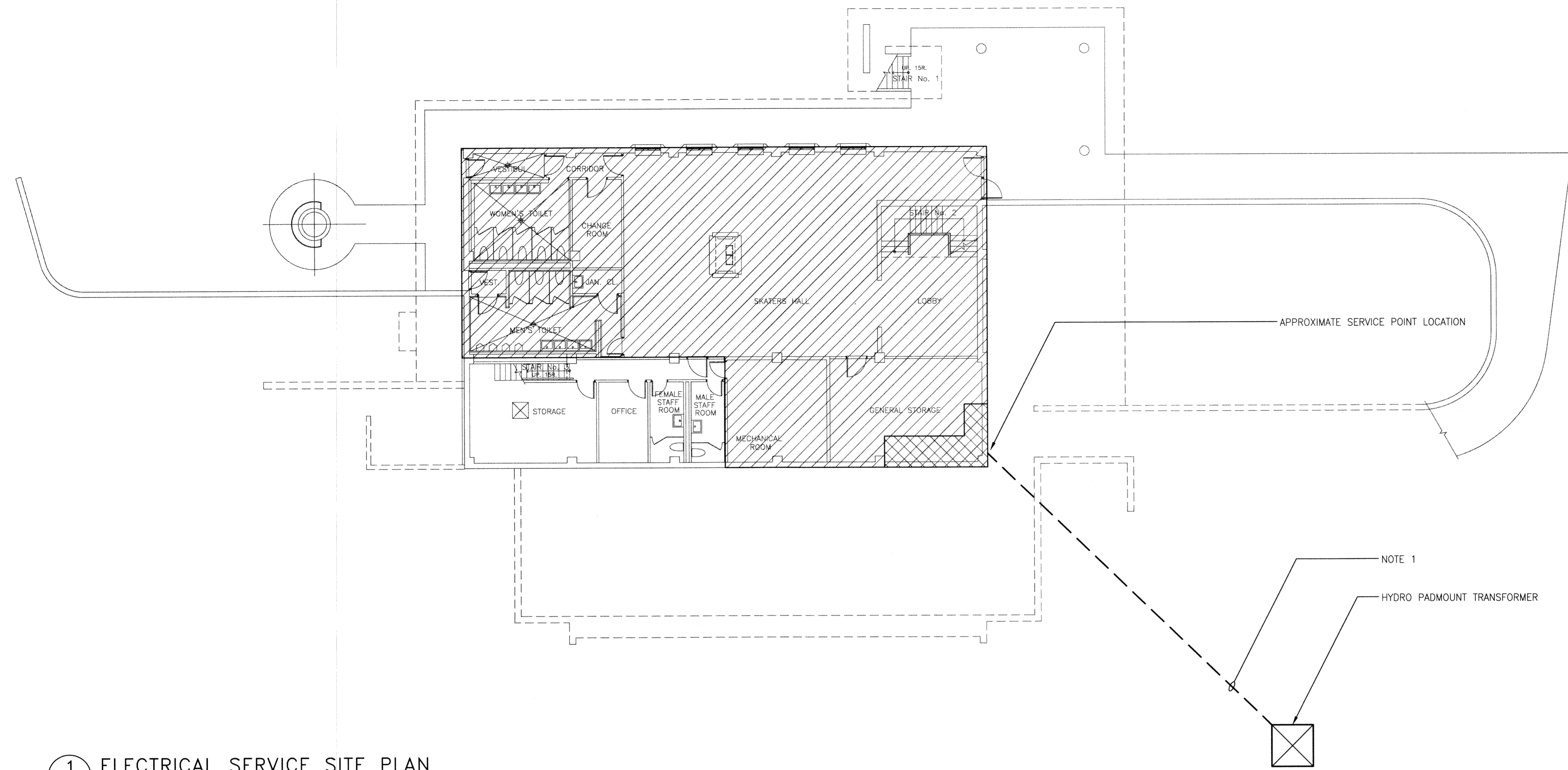
THIS DRAWING MUST NOT BE SCALED.
 THE GENERAL CONTRACTOR SHALL VERIFY ALL DIMENSIONS, DATUMS, AND LEVELS PRIOR TO COMMENCEMENT OF WORK. ALL ERRORS AND OMISSIONS TO BE REPORTED TO NUMBER TEN ARCHITECTURAL GROUP BEFORE PROCEEDING.
 VARIATIONS AND MODIFICATIONS TO WORK SHOWN ON THESE DRAWINGS SHALL NOT BE CARRIED OUT WITHOUT WRITTEN PERMISSION OF NUMBER TEN ARCHITECTURAL GROUP.
 THIS DRAWING IS THE EXCLUSIVE PROPERTY OF NUMBER TEN ARCHITECTURAL GROUP AND THE COPYRIGHT IN THE SAME BEING RESERVED TO THEM. IT MAY BE REPRODUCED ONLY WITH THE PERMISSION OF NUMBER TEN ARCHITECTURAL GROUP, IN WHICH CASE THE REPRODUCTION MUST BEAR THEIR NAME.

REVISED/ ISSUED/ PLOTTED	DATE

Rev. 0 - ISSUED FOR TENDER NOVEMBER 21/2011

NOTES:

- COORDINATE WITH MANITOBA HYDRO FOR NEW SERVICE ENTRANCE WORK. CONTRACTOR IS RESPONSIBLE FOR FEEDER CABLES FROM HYDRO PADMOUNT TO NEW SERVICE ENTRANCE LOCATION.



1 ELECTRICAL SERVICE SITE PLAN
 SCALE: 3/32"=1'-0" (24" X 36")
 3/64"=1'-0" (11" X 17")

File Name: E:\Projects\2011\11-0902-04 Doc.Control\Tobias\DWG\11-0902-04_E2.0-Rev 0.dwg - Tab: E2.0 Plotted By: Dbercche 11/11/21 [Mon 12:55pm] 24x36/PLOT SCALE: 1:1

numberTEN
 architectural group
 winnipeg MB regina SK victoria BC
 204.942.0981 306.721.1501 250.360.2106
 architecture • interior design • graphic design

PEGUIS PAVILION
 UPGRADES AND ENTRY ADDITION
 BIDDING #913-2011

project
 ELECTRICAL
 SERVICE SITE PLAN

sheet title
KGS GROUP CONSULTING
 ENGINEERS
 consultant

APECN
 Certificate of Authorization
 KGS Group
 No. 245

P.A.L. PAWLKIEWICZ
 Member
 18727
 REGISTERED PROFESSIONAL ENGINEER

scale: 3/16"=1'-0"
 date: November 09, 2011
 seal
 drawn by: GCN
 checked by: [Signature]
 project no. 2011026
 sheet no. **E2.0**