

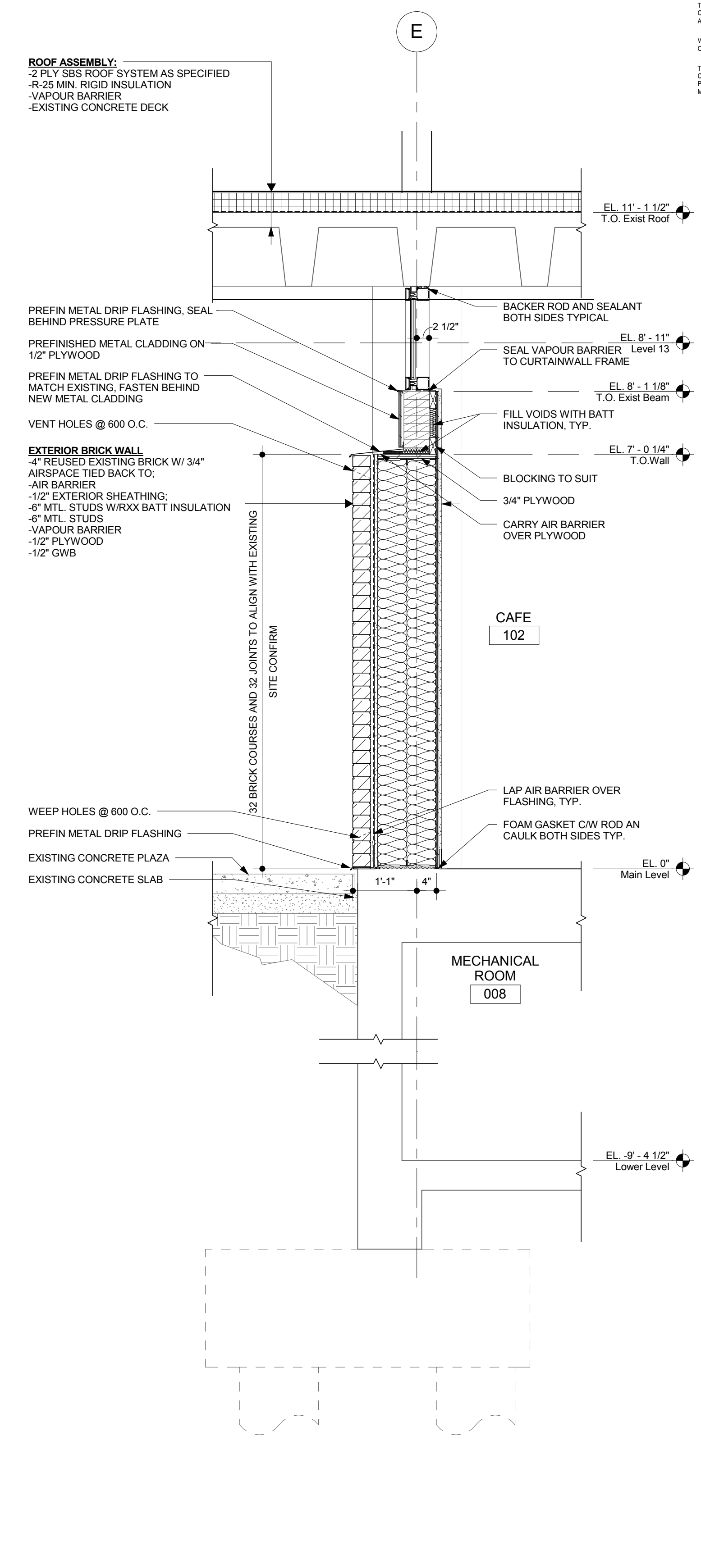
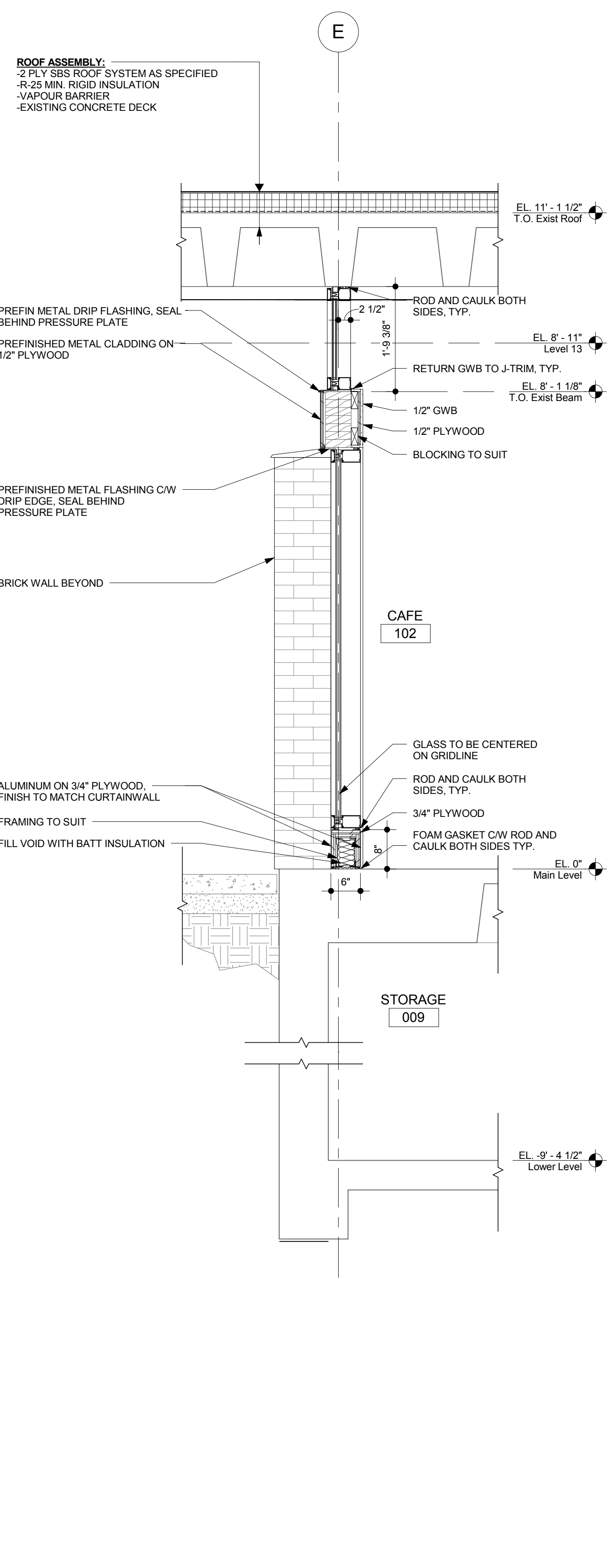
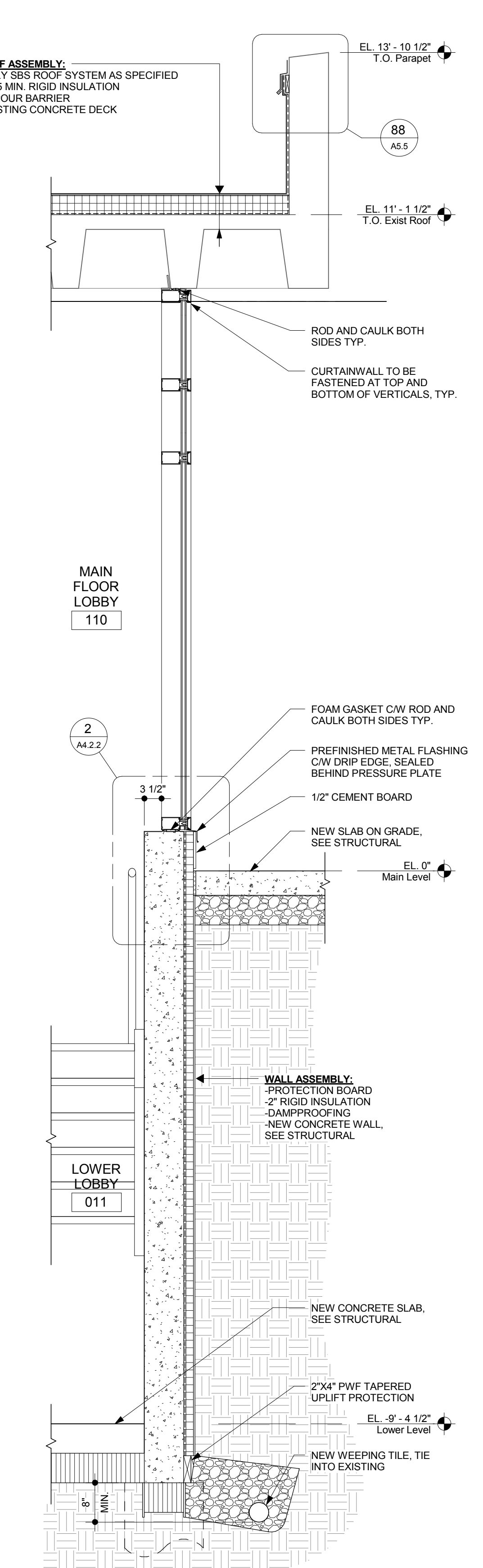
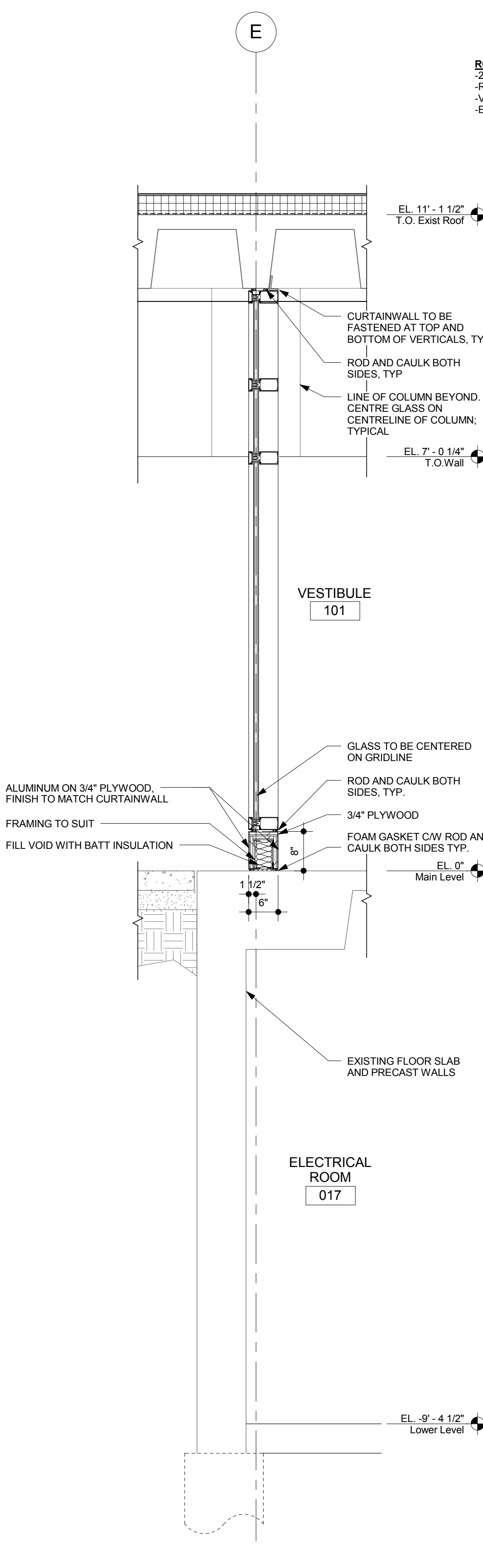
THIS DRAWING MUST NOT BE SCALED.

THE GENERAL CONTRACTOR SHALL VERIFY ALL DIMENSIONS, DATUMS, AND LEVELS PRIOR TO COMMENCEMENT OF WORK. ALL ERRORS AND OMISSIONS TO BE REPORTED TO NUMBER TEN ARCHITECTURAL GROUP BEFORE PROCEEDING.

VARIATIONS AND MODIFICATIONS TO WORK SHOWN ON THESE DRAWINGS SHALL NOT BE CARRIED OUT WITHOUT WRITTEN PERMISSION OF NUMBER TEN ARCHITECTURAL GROUP.

THIS DRAWING IS THE EXCLUSIVE PROPERTY OF NUMBER TEN ARCHITECTURAL GROUP AND THE COPYRIGHT IN THE SAME REMAINS RESERVED TO THEM. IT MAY BE REPRODUCED ONLY WITH THE PERMISSION OF NUMBER TEN ARCHITECTURAL GROUP, IN WHICH CASE THE REPRODUCTION MUST BEAR THEIR NAME.

REVISION NO.	DESCRIPTION	REVISED/ISSUED/PLOTTED



PRE-TENDER REVIEW SET

numberTEN
architectural group

winnipeg MB regina SK victoria BC
204 942.0981 306 721.1501 250 360.2106

architecture • interior design • graphic design

Peguis Pavillon Upgrades and Entry Addition
Kildonan Park
Winnipeg, Manitoba, Canada

project

sheet title

consultant

scale: 3/4" = 1'-0"
date: NOV 21 2011

drawn by: Author
checked by: Checker
project no. 2011026

sheet no. **A5.2**