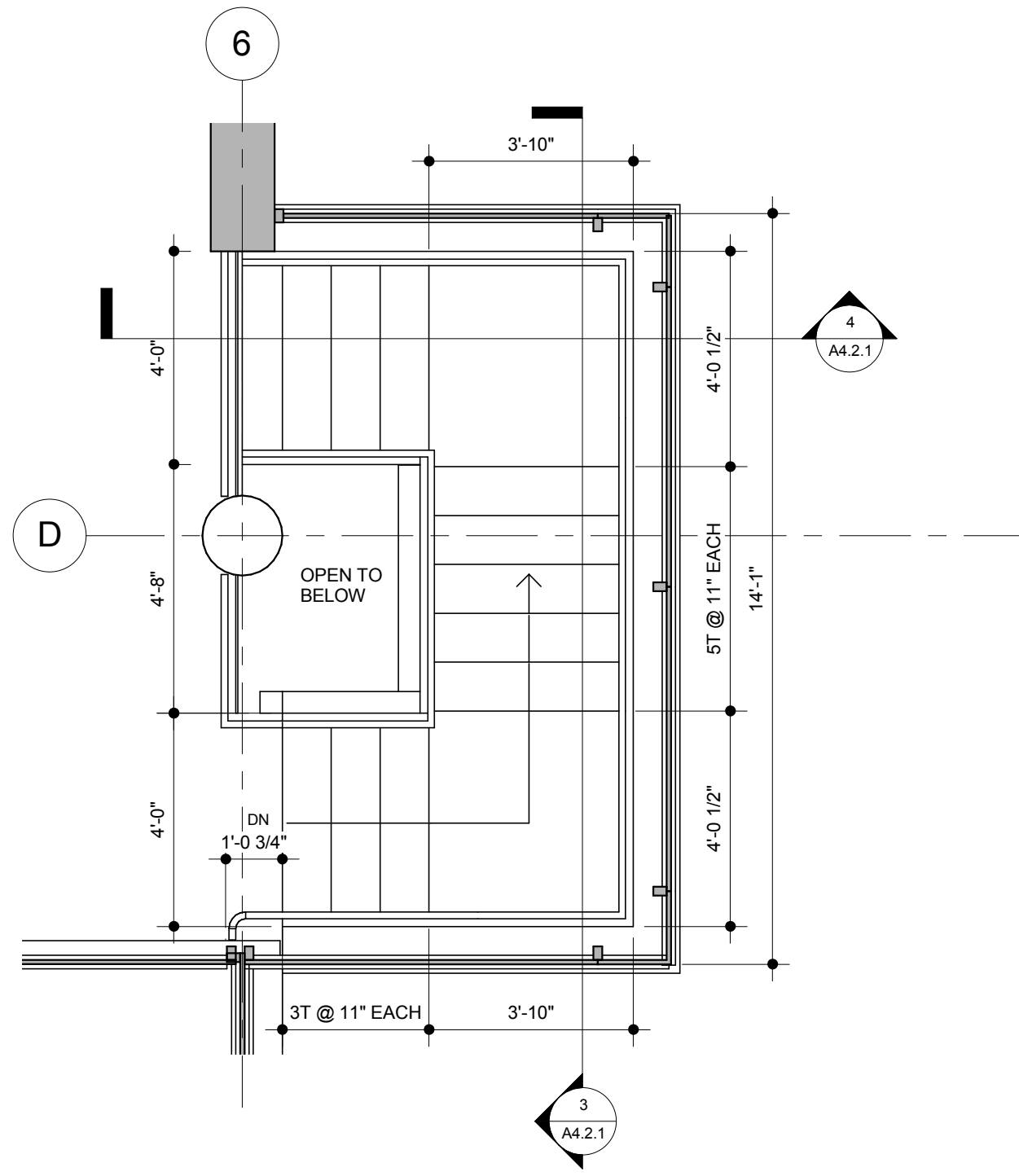
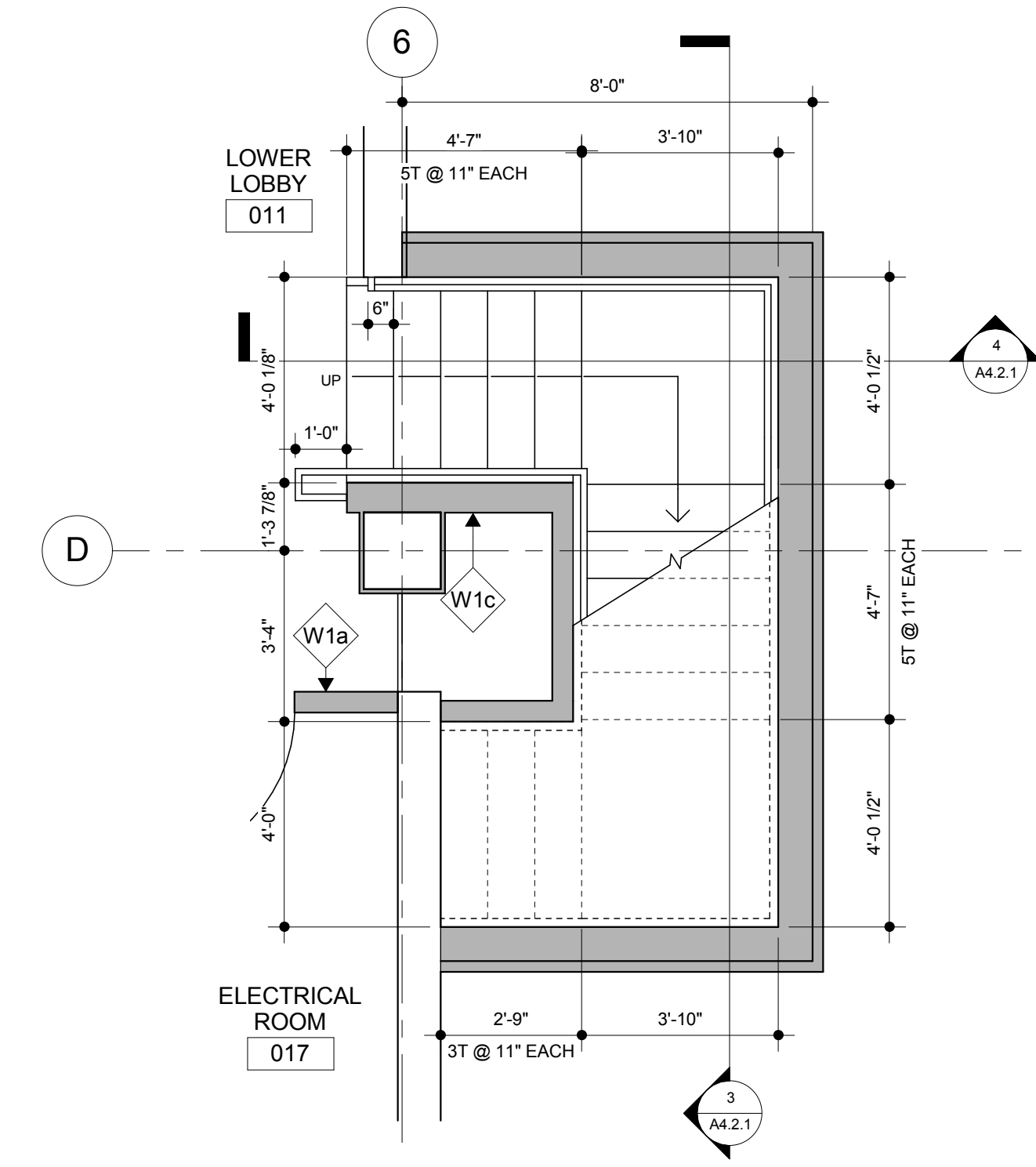


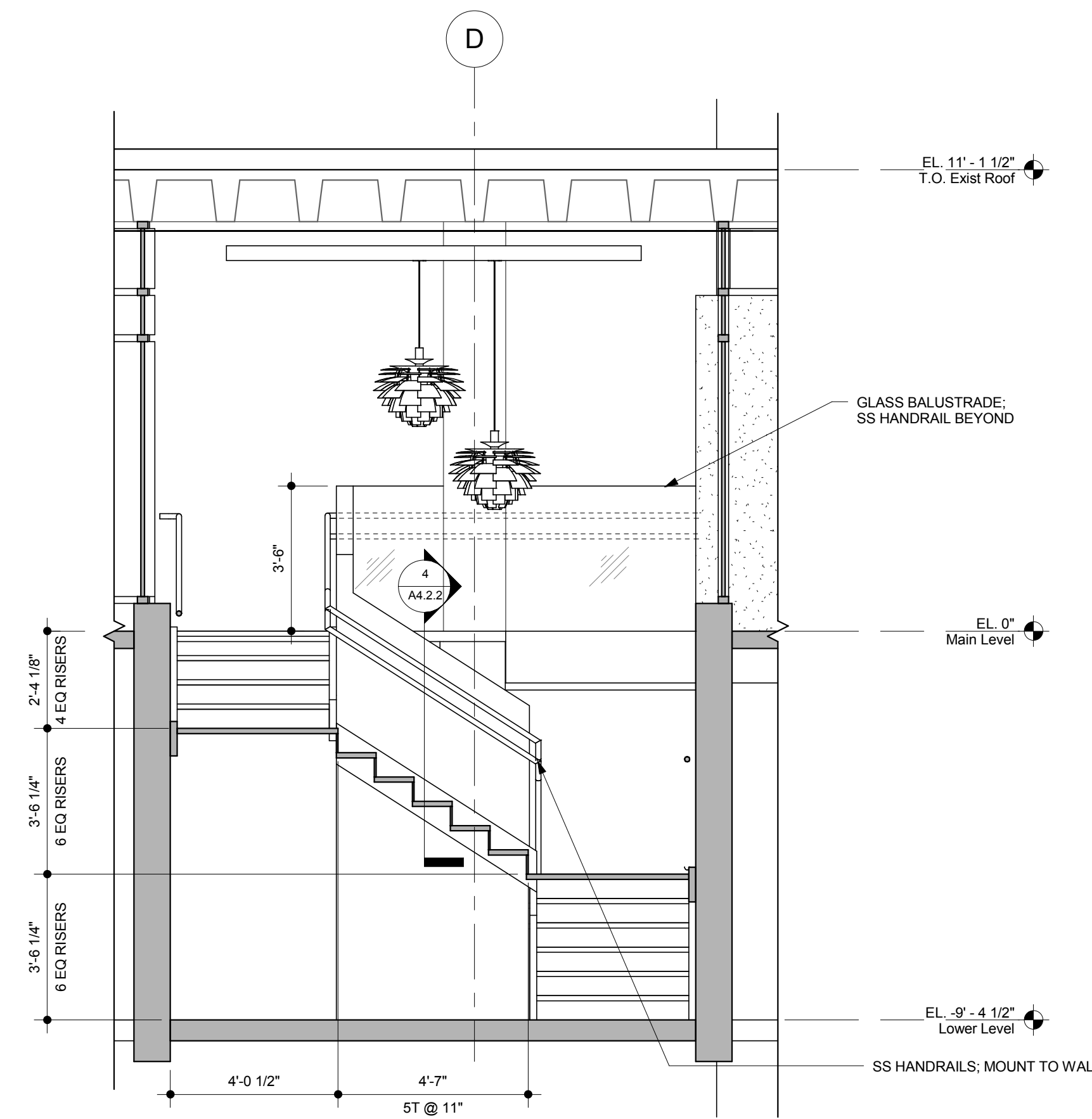
1 ENLARGED PLAN OF EXTERIOR STAIR  
A4.2.1 3/8" = 1'-0"



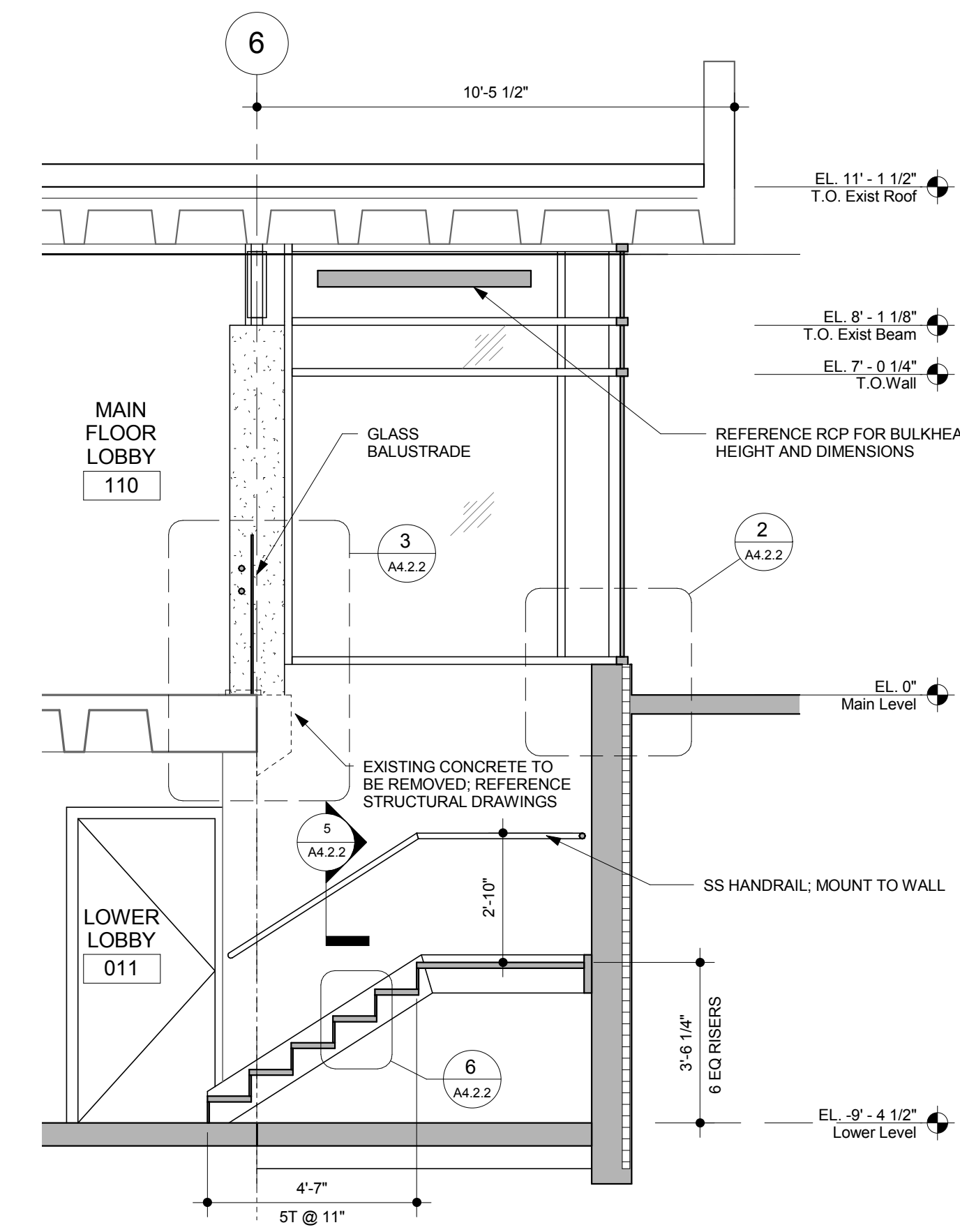
2 NEW STAIR PLAN - MAIN FLOOR  
A4.2.1 3/8" = 1'-0"



7 NEW STAIR PLAN - BASEMENT  
A4.2.1 3/8" = 1'-0"



3 STAIR SECTION 1  
A4.2.1 3/8" = 1'-0"



4 STAIR SECTION 2  
A4.2.1 3/8" = 1'-0"

THIS DRAWING MUST NOT BE SCALED.  
THE GENERAL CONTRACTOR SHALL VERIFY ALL DIMENSIONS, DATUMS, AND LEVELS PRIOR TO COMMENCEMENT OF WORK. ALL ERRORS AND OMISSIONS TO BE REPORTED TO NUMBER TEN ARCHITECTURAL GROUP BEFORE PROCEEDING.  
VARIATIONS AND MODIFICATIONS TO WORK SHOWN ON THESE DRAWINGS SHALL NOT BE CARRIED OUT WITHOUT WRITTEN PERMISSION OF NUMBER TEN ARCHITECTURAL GROUP.  
THIS DRAWING IS THE EXCLUSIVE PROPERTY OF NUMBER TEN ARCHITECTURAL GROUP AND THE COPYRIGHT IN THE SAME REMAINS RESERVED TO THEM. IT MAY BE REPRODUCED ONLY WITH THE PERMISSION OF NUMBER TEN ARCHITECTURAL GROUP, IN WHICH CASE THE REPRODUCTION MUST BEAR THEIR NAME.

REVISION NO.	DESCRIPTION	REVISED/ISSUED/PLOTTED

PRE-TENDER REVIEW SET

**numberTEN**  
architectural group  
winnipeg MB regina SK victoria BC  
204 942.0981 306 721.1501 250 360.2106  
architecture • interior design • graphic design

Peguis Pavillon Upgrades and Entry Addition  
Kildonan Park  
Winnipeg, Manitoba, Canada

Vertical Circulation - Stair Plans, Sections and Details

scale: 3/8" = 1'-0"  
date: NOV 21 2011  
author: Author  
checked by: Checker  
project no. 2011026  
sheet no. A4.2.1