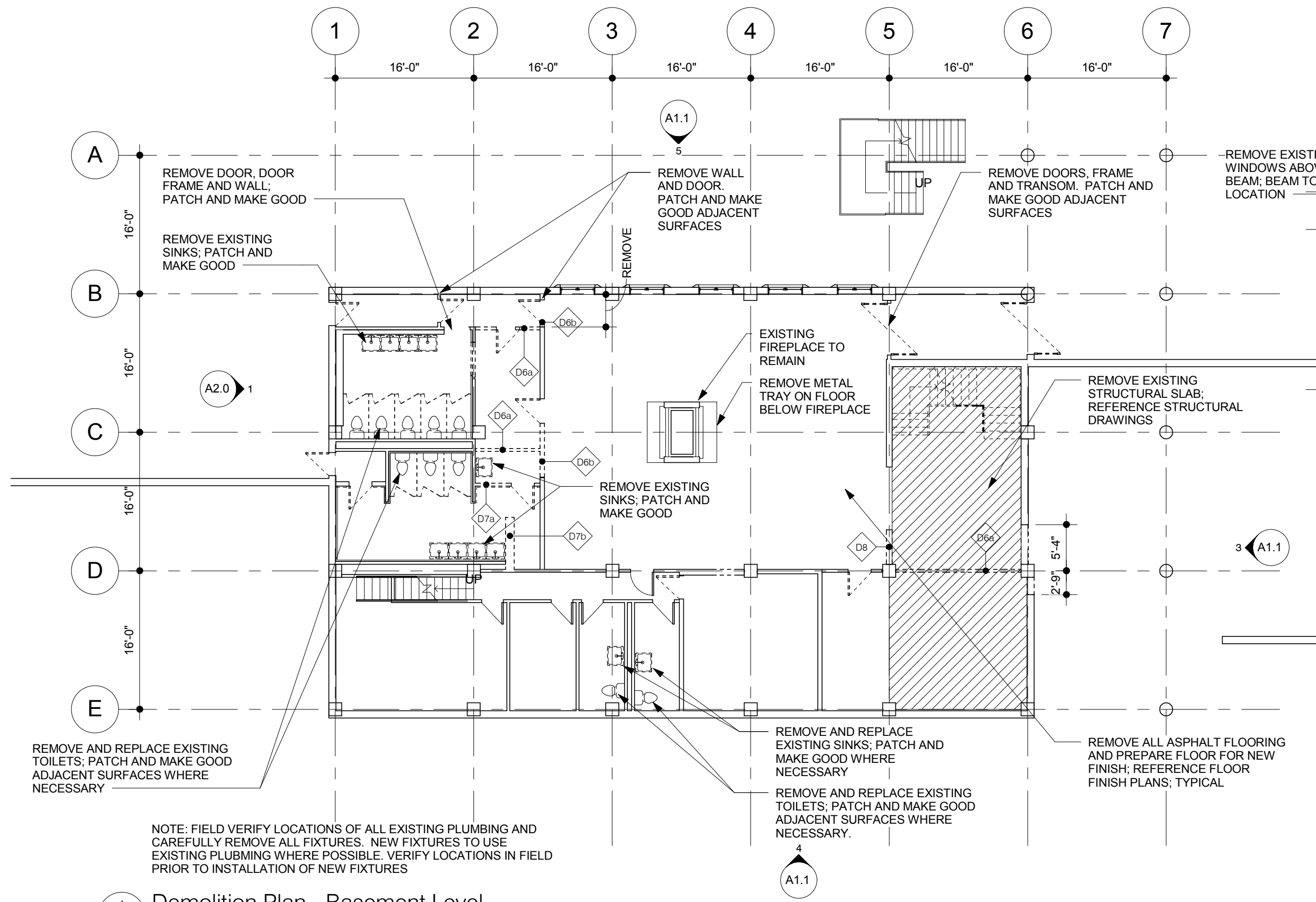


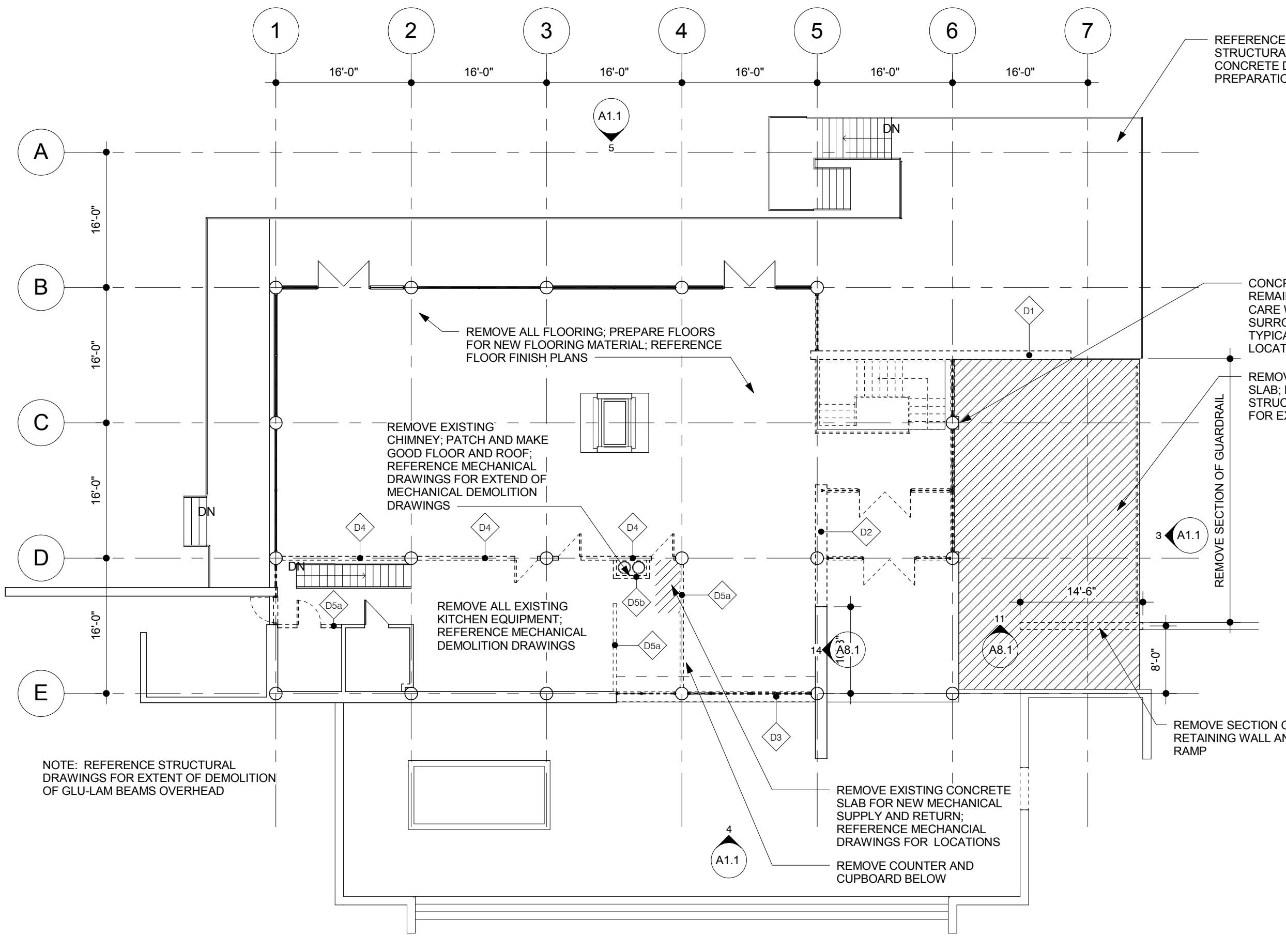
THIS DRAWING MUST NOT BE SCALED.
 THE GENERAL CONTRACTOR SHALL VERIFY ALL DIMENSIONS, DATUMS, AND LEVELS PRIOR TO COMMENCEMENT OF WORK. ALL ERRORS AND OMISSIONS TO BE REPORTED TO NUMBER TEN ARCHITECTURAL GROUP BEFORE PROCEEDING.
 VARIATIONS AND MODIFICATIONS TO WORK SHOWN ON THESE DRAWINGS SHALL NOT BE CARRIED OUT WITHOUT WRITTEN PERMISSION OF NUMBER TEN ARCHITECTURAL GROUP.
 THIS DRAWING IS THE EXCLUSIVE PROPERTY OF NUMBER TEN ARCHITECTURAL GROUP AND THE COPYRIGHT IN THE SAME REMAINS RESERVED TO THEM. IT MAY BE REPRODUCED ONLY WITH THE PERMISSION OF NUMBER TEN ARCHITECTURAL GROUP. IN WHICH CASE THE REPRODUCTION MUST BEAR THEIR NAME.

REVISION NO.	DESCRIPTION	REVISED/ISSUED/PLOTTED

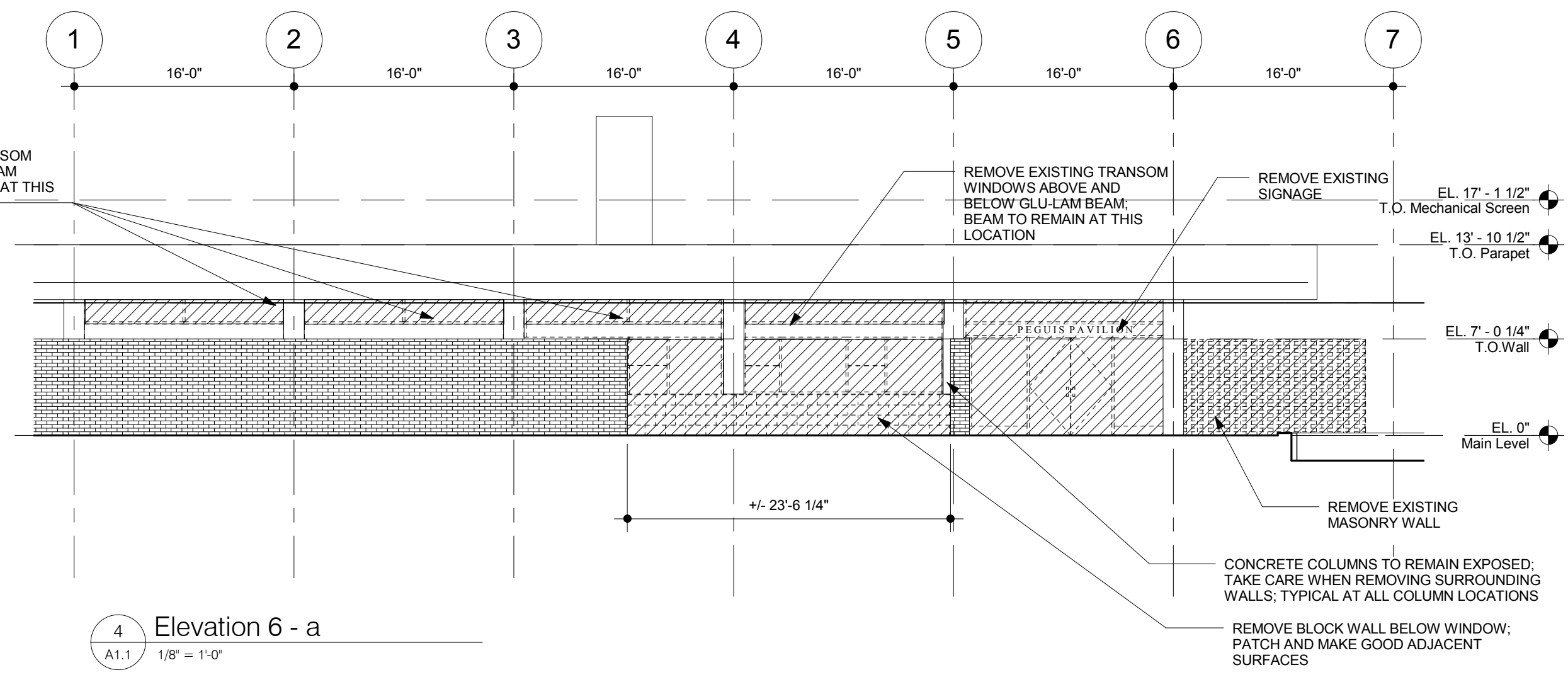
GENERAL NOTES:
 PLEASE REFER TO STRUCTURAL, MECHANICAL AND ELECTRICAL DRAWINGS FOR FURTHER DEMOLITION NOTES



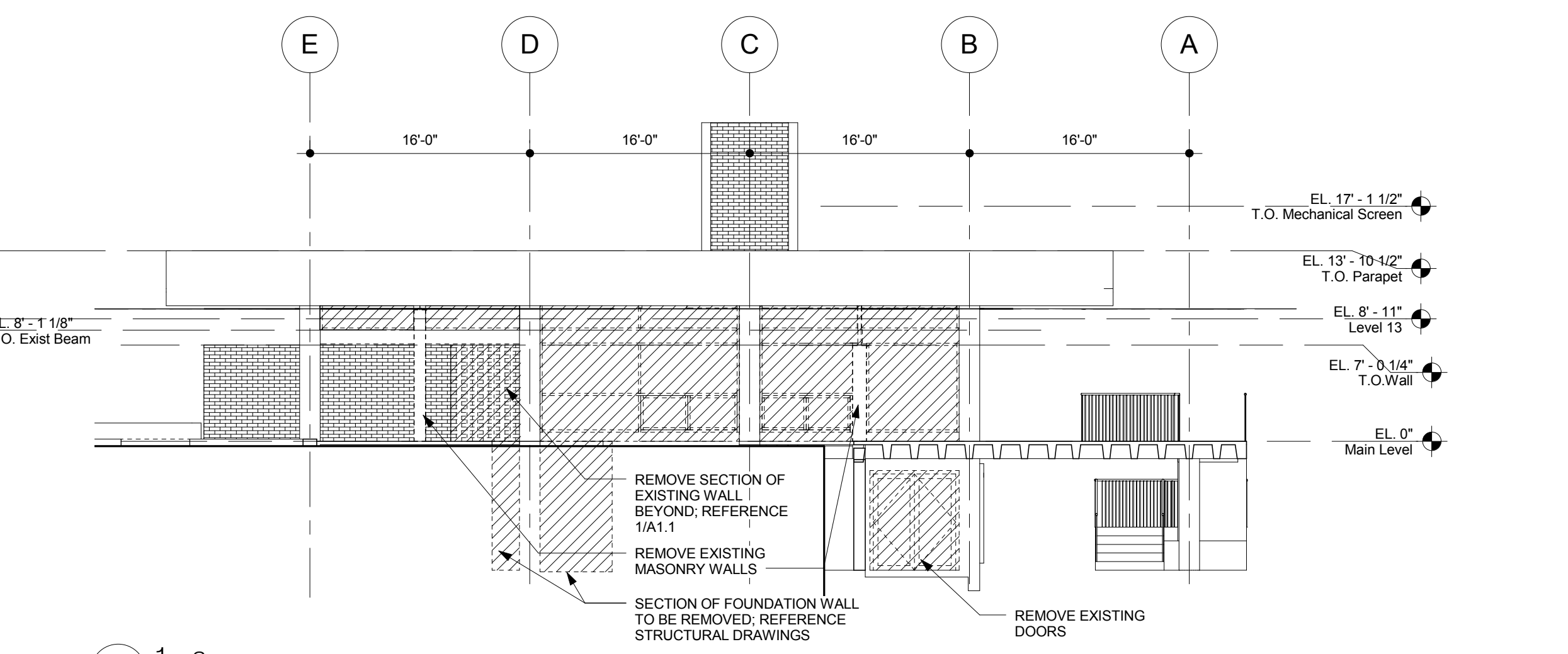
1 Demolition Plan - Basement Level
 A1.1 3/32" = 1'-0"



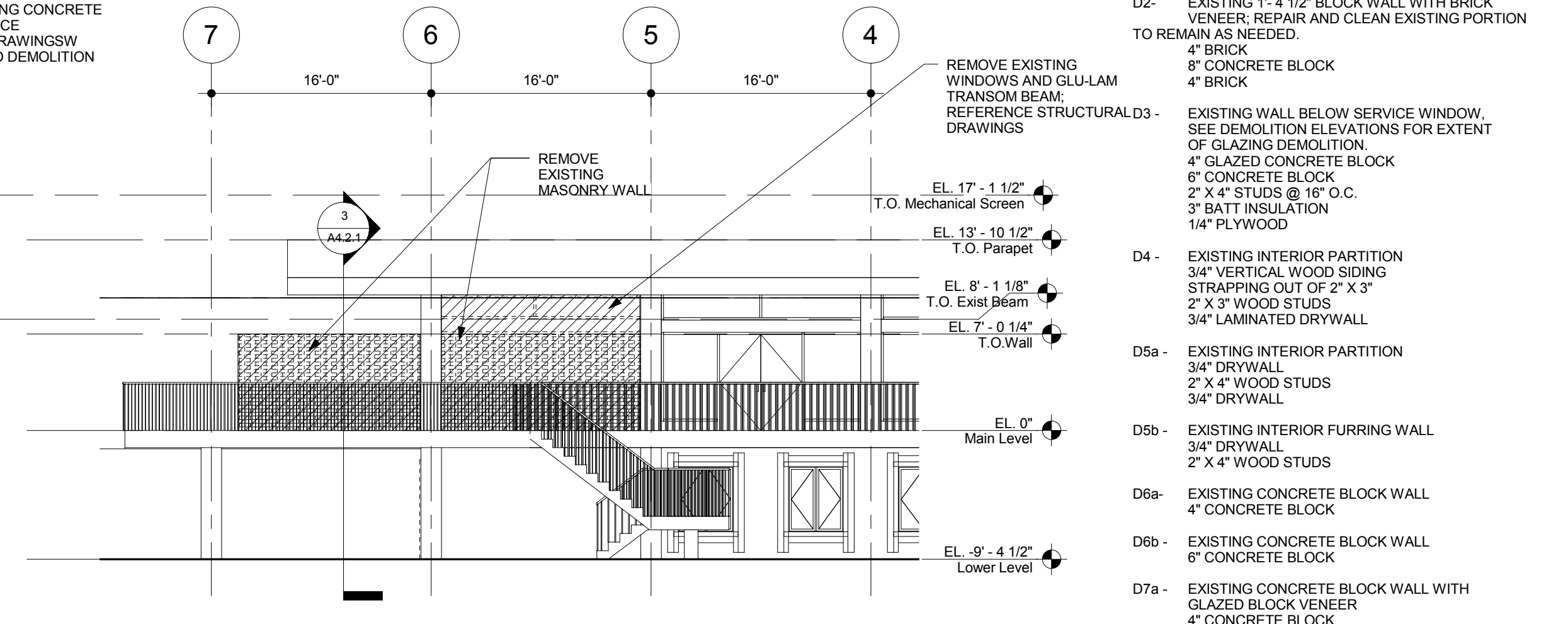
2 Demolition Plan - Main Level
 A1.1 3/32" = 1'-0"



4 Elevation 6 - a
 A1.1 1/8" = 1'-0"



3 1 - a
 A1.1 1/8" = 1'-0"



5 Elevation 7 - a
 A1.1 1/8" = 1'-0"

WALL TYPE LEGEND

- D1 - EXISTING 1'-0 1/4" BRICK WALL
- 4" BRICK
- 4" CONCRETE BLOCK
- 4" BRICK
- D2 - EXISTING 1'-4 1/2" BLOCK WALL WITH BRICK VENEER; REPAIR AND CLEAN EXISTING PORTION TO REMAIN AS NEEDED.
- 4" BRICK
- 8" CONCRETE BLOCK
- 4" BRICK
- EXISTING WALL BELOW SERVICE WINDOW. SEE DEMOLITION ELEVATIONS FOR EXTENT OF GLAZING DEMOLITION.
- 4" GLAZED CONCRETE BLOCK
- 6" CONCRETE BLOCK
- 2" X 4" STUDS @ 16" O.C.
- 3" BATT INSULATION
- 1/4" PLYWOOD
- D4 - EXISTING INTERIOR PARTITION
- 3/4" VERTICAL WOOD SIDING
- STRAPPING OUT OF 2" X 3"
- 2" X 3" WOOD STUDS
- 3/4" LAMINATED DRYWALL
- D5a - EXISTING INTERIOR PARTITION
- 3/4" DRYWALL
- 2" X 4" WOOD STUDS
- 3/4" DRYWALL
- D5b - EXISTING INTERIOR FURRING WALL
- 3/4" DRYWALL
- 2" X 4" WOOD STUDS
- D6a - EXISTING CONCRETE BLOCK WALL
- 4" CONCRETE BLOCK
- D6b - EXISTING CONCRETE BLOCK WALL
- 6" CONCRETE BLOCK
- D7a - EXISTING CONCRETE BLOCK WALL WITH GLAZED BLOCK VENEER
- 4" CONCRETE BLOCK
- 2" GLAZED CONCRETE BLOCK VENEER
- D7b - EXISTING CONCRETE BLOCK WALL WITH GLAZED BLOCK VENEER
- 2" GLAZED CONCRETE BLOCK VENEER
- 4" CONCRETE BLOCK
- 2" GLAZED CONCRETE BLOCK VENEER

PRE-TENDER REVIEW SET

numberTEN
 architectural group
 winnipeg MB regina SK victoria BC
 204 942.0981 306 721.1501 250 360.2106
 architecture • interior design • graphic design

Peguis Pavillon Upgrades and Entry Addition
 Kildonan Park
 Winnipeg, Manitoba, Canada

Demolition Plan
 sheet title

consultant

scale: As indicated
 date: NOV 21 2011
 seal: CKL
 checked by: RB
 project no. 2011026
 sheet no. **A1.1**