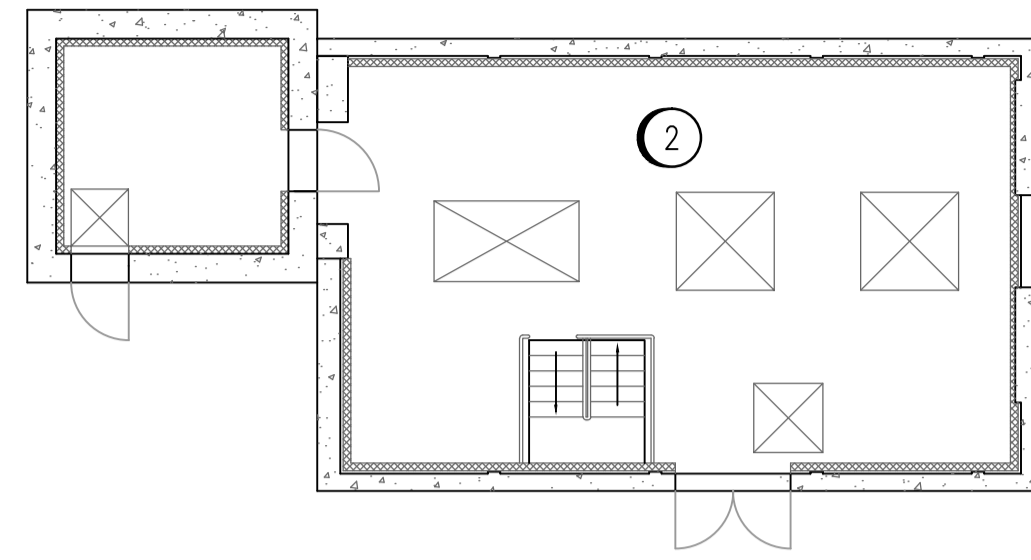
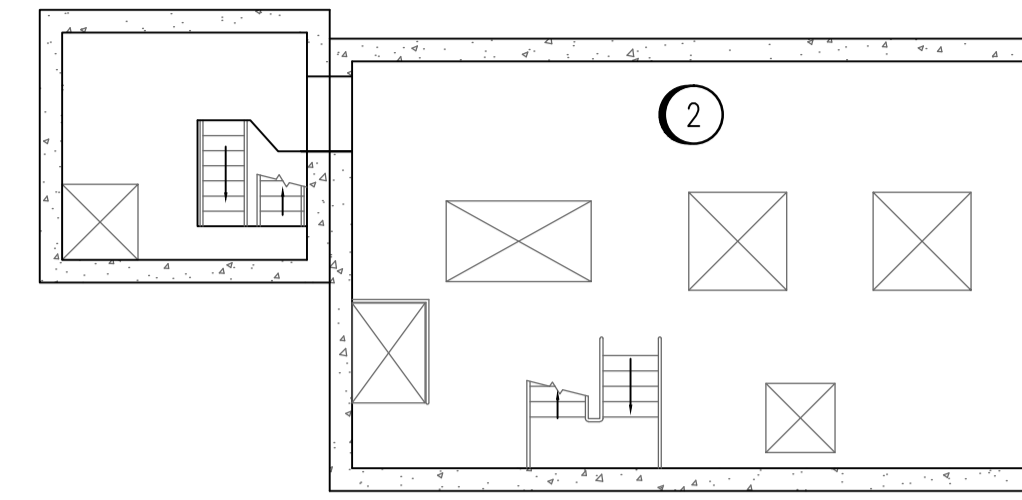


LEGEND

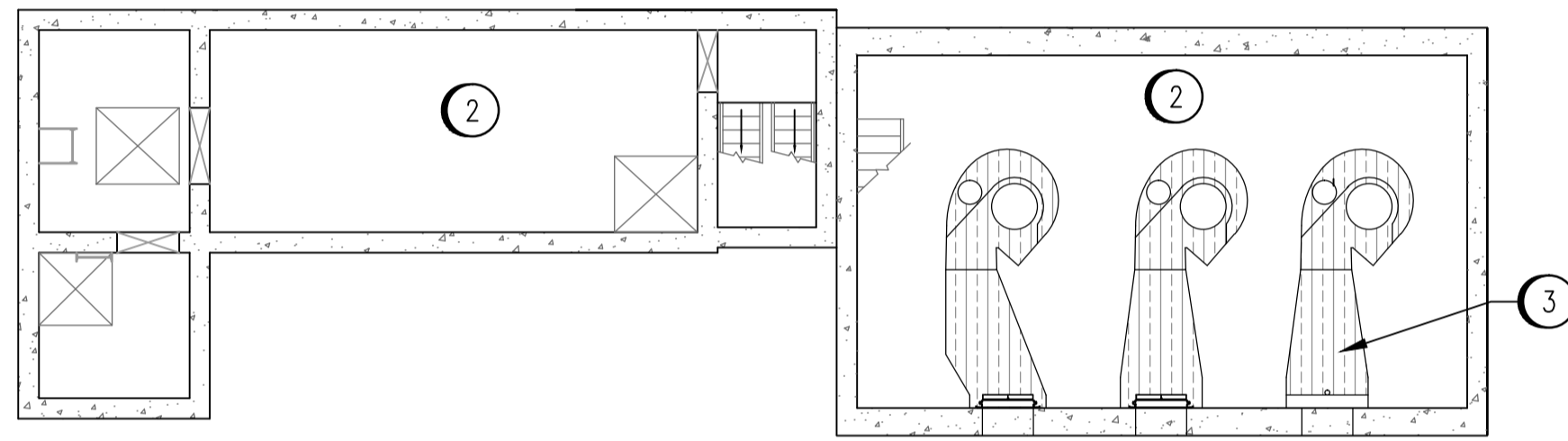
	HAZARDOUS CLASS I, ZONE 1, GROUP IIA
	HAZARDOUS CLASS I, ZONE 2, GROUP IIA
	CATEGORY 1 (MOISTURE)
	CATEGORY 2 (CORROSIVE)
	CATEGORY 2 WET (MOISTURE & CORROSIVE)



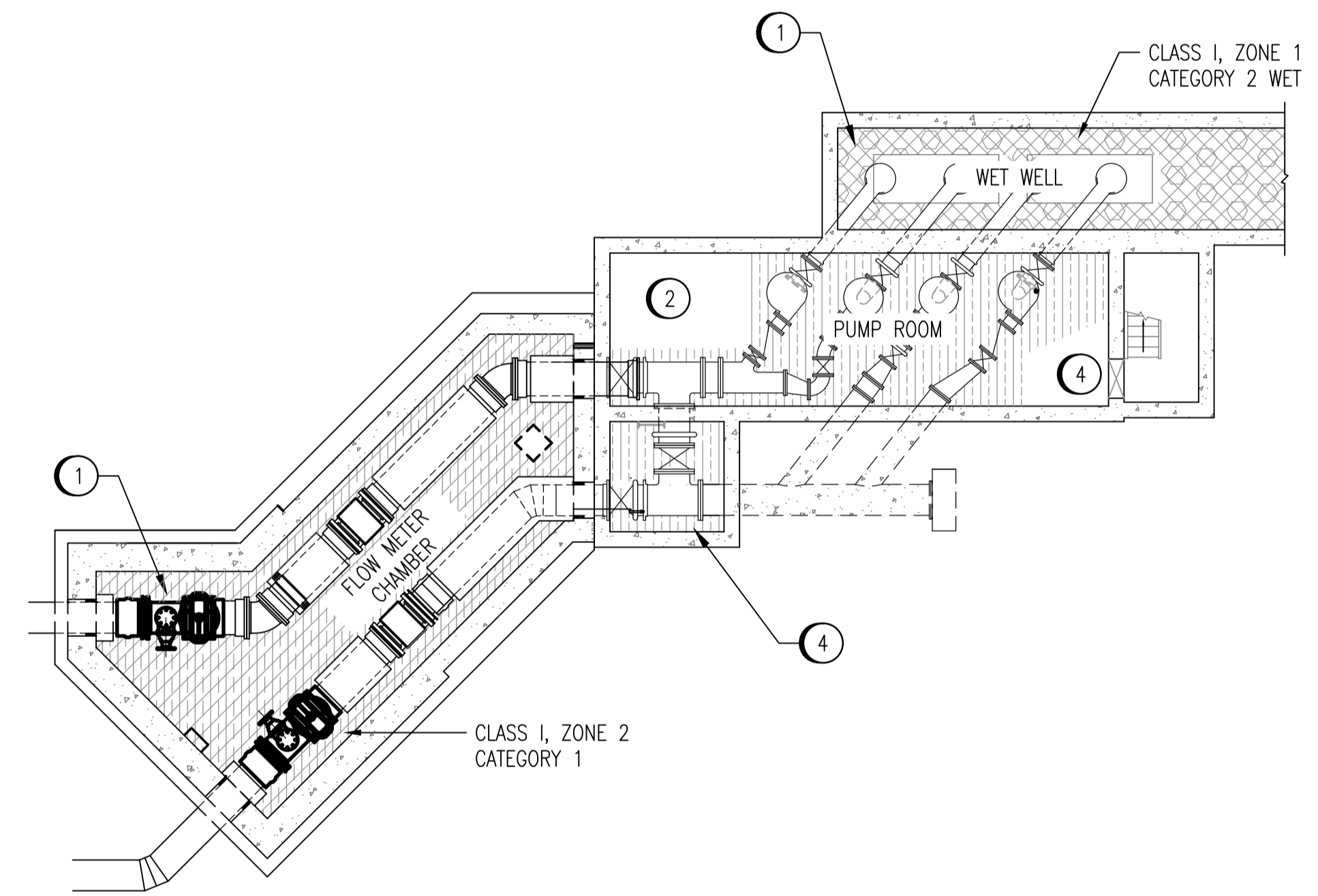
MAIN FLOOR
SCALE: 1 : 100



LOWER LEVEL 1
SCALE: 1 : 100



MOTOR AND COMMUNOTOR ROOM
SCALE: 1 : 100

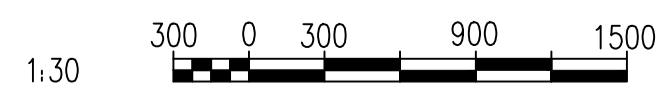


FLOW METER CHAMBER AND PUMP ROOM
SCALE: 1 : 100

SPECIFIC NOTES:

- ① THE REQUIRED TEMPERATURE CODE FOR ALL HAZARDOUS LOCATIONS ON THIS DRAWING IS T2A (280°C)
- ② ALL INTERIOR BUILDING SPACES, WITH THE EXCEPTION OF THE FLOW METER CHAMBER AND WET WELL, ARE TO BE PROVIDED WITH 6 ACH OF CONTINUOUS VENTILATION, WITH UP TO 75% RECIRCULATION IN COLD WEATHER TO CONSERVE HEAT.
- ③ THE COMMUNOTOR CHAMBER BASINS ARE A CATEGORY 1 LOCATION.
- ④ THE AREAS IN THE PUMP ROOM AND VALVE CHAMBER THAT ARE BELOW PIPING, ON WHICH MOISTURE MAY CONDENSE, ARE A CATEGORY 1 LOCATION.

---	---
DRAWING NUMBER	REFERENCE DRAWINGS



00	ISSUED FOR TENDER, BID OPP: 907-2011	2011/11/04	CJR	CJR
NO.	REVISIONS	DATE	DESIGN	CHECK

 SNC-LAVALIN INC. 148 Nature Park Way Winnipeg, MB, Canada R3P 0X7 204-786-8080	
DESIGNED BY: C. REIMER	CHECKED BY: C. REIMER
DRAWN BY: M.J. PERSSON	APPROVED BY: C. REIMER
SCALE: 1:100	RELEASED FOR CONSTRUCTION BY: K. R. ZUREK DATE: 2012/02/23
DATE: 2011/10/17	DATE: 2012/02/23
CONSULTANT NO.: 508042-0000-4700-0003	

ENGINEER'S SEAL
ORIGINAL DRAWING SEALED BY: C. J. REIMER SNC-LAVALIN MEMBER #21968 2011/11/07 REV. 00

 THE CITY OF WINNIPEG WATER AND WASTE DEPARTMENT			
MONTCALM WASTEWATER PUMPING STATION 2011 UPGRADES HAZARDOUS LOCATION PLAN			
CITY DRAWING NUMBER	SHEET	REV.	SIZE
1-0164L-E0003	001	00	A1