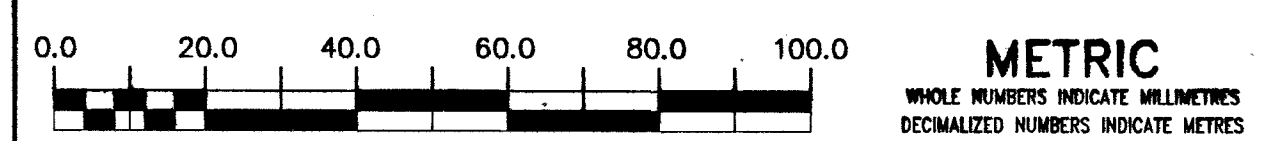


PROJECT COMPLETION
DATE 2004.05.10

AS-CONSTRUCTED
WATER AND WASTE DEPARTMENT



200 WM	WATERMAIN	200 WM	SL, HYDRO	150 WM	WATERMAIN	150 WM
⊕	HYDRANT	⊕	MTS	⊕	HYDRANT	⊕
⊙	VALVE	⊙	TRAFFIC SIGNALS	⊙	VALVE	⊙
525 LDS	LAND DRAINAGE SEWER	525 LDS	GAS	50 GAS	300 LDS	LAND DRAINAGE SEWER
375 WWS	WASTEWATER SEWER	375 WWS	SURVEY BAR	250 WWS	250 WWS	WASTEWATER SEWER
○	MANHOLE	●	FENCE	⊕	⊕	PROFILE
□	CATCH BASIN	⊕	POLE - HYDRO, MTS	⊕	⊕	GROUND ABOVE PIPE
▽	CURB INLET	⊕	CURB STOP	⊕	⊕	DITCH (SOUTH & EAST)
⊕	JUNCTIONS	⊕	GUY ANCHOR	⊕	⊕	GUTTER (NORTH & WEST)
⊕	CULVERT	⊕	LIGHT STANDARD			
⊕	ANODE	⊕	TREE			
EXISTING	LEGEND-PLAN	PROPOSED	EXISTING	LEGEND-PLAN	PROPOSED	EXISTING
				LEGEND-PROFILE	PROPOSED	

LOCATION APPROVED UNDERGROUND STRUCTURES		B.M. ELEV.	FIELD BOOK #
SURV. U/G STRUCTURES COMMITTEE		POSTED TO LBIS	
DATE			
NOTE: LOCATION OF UNDERGROUND STRUCTURES AS SHOWN ARE BASED ON THE BEST INFORMATION AVAILABLE BUT NO GUARANTEE IS GIVEN THAT ALL EXISTING UTILITIES ARE SHOWN OR THAT THE GIVEN LOCATIONS ARE EXACT. CONFIRMATION OF EXISTENCE AND EXACT LOCATION OF ALL SERVICES MUST BE OBTAINED FROM THE INDIVIDUAL UTILITIES BEFORE PROCEEDING WITH CONSTRUCTION.			
NO.	REVISIONS	DATE	BY
1.	REVISED TO AS-CONSTRUCTED	04.10.01	WKT/CLM

CITY OF WINNIPEG WATER AND WASTE ENGINEERING DIVISION			
DESIGNED BY	JE	CHECKED BY	JE
DRAWN BY	RWK / WKT	APPROVED BY	KZ
HOR. SCALE	1:1000	RELEASED FOR CONSTRUCTION	
VERTICAL		DATE	2004.01.15

ENGINEER'S SEAL
PROVINCE OF MANITOBA
K.R. ZUREK
REGISTERED PROFESSIONAL ENGINEER

THE CITY OF WINNIPEG
WATER AND WASTE DEPARTMENT

Winnipeg

MONTCALM SEWAGE PUMPING STATION

MONTCALM FORCEMAIN
SITE PLAN

SHEET 4 OF 4
CITY DRAWING NUMBER
05359

TENDER No. 16-2004
FILENAME: 05359.dwg
PLOT DATE: 2004.10.01