

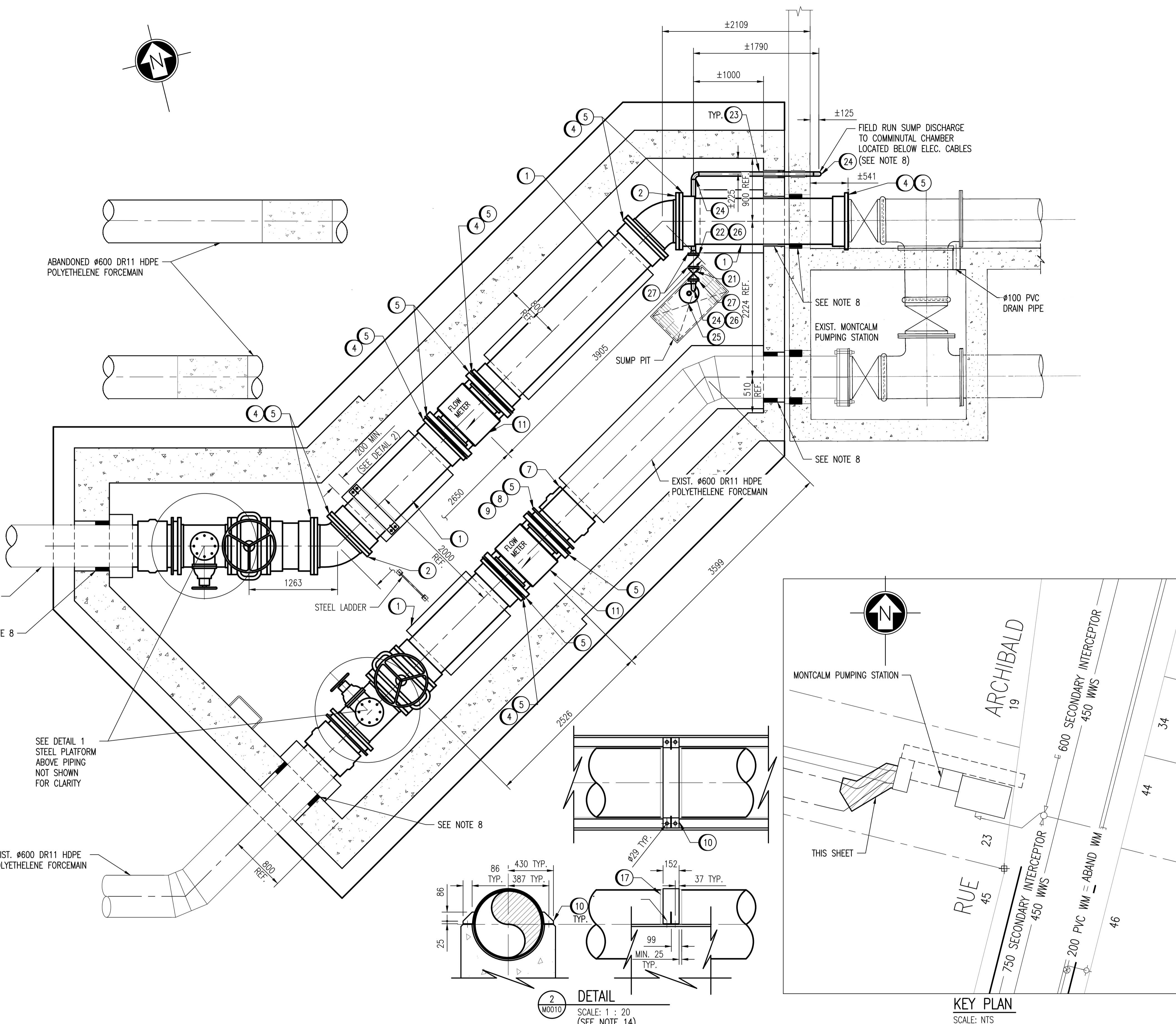
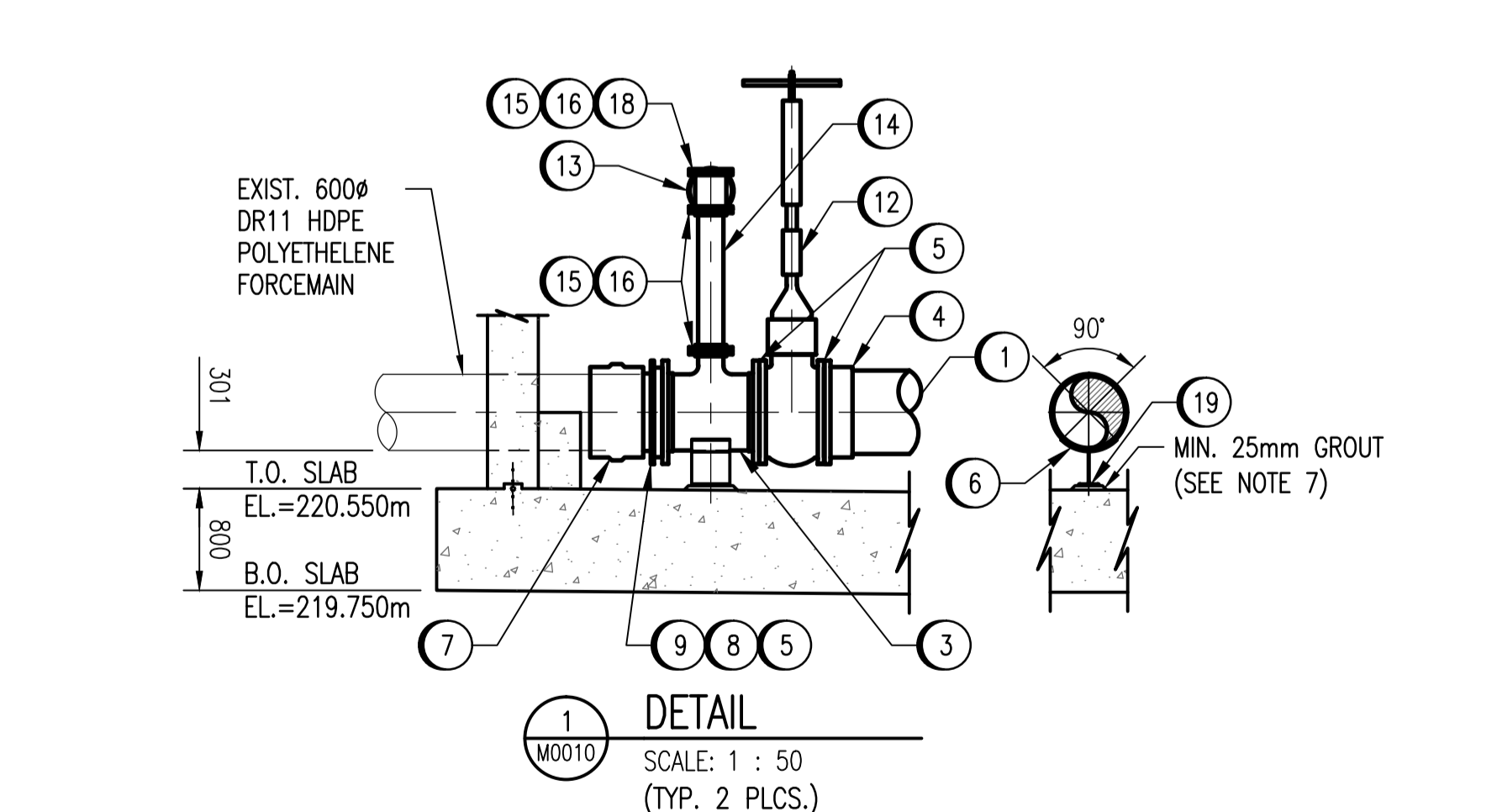
A1 SIZE - 594mm x 841mm

**LEGEND**

	NEW LINE
	EXISTING LINE

BILL OF MATERIALS					
NO.	DESCRIPTION	SIZE	MAT'L/SPEC	SCH./RATING	QTY.
1	PIPE, DUCTILE IRON (CUT TO SUIT)	ø600mm	SEE NOTE 9		-
2	FLANGED 45° ELBOW, CI	600mm	SEE NOTE 9	125 lb	2
3	FLANGED TEE, CI	600 x 600 x 200mm	SEE NOTE 9	125 lb	2
4	UNIFLANGE ADAPTER	DN600	MODEL 4428-140 OR EQUAL	125 lb	8
5	GASKET	600mm	SEE NOTE 9	125 lb	19
6	PLATE (ROLLED TO SUIT PIPE O.D.)	12mm TH x 300mm LG	SEE NOTE 9		2
7	PLASSON ELECTROFUSION COUPLER	NOM. 630mm	MODEL 630 OR EQUAL	DR-11	3
8	FLANGE ADAPTER (STUB END)	600mm	HDPE	DR-11	3
9	DUCTILE IRON FLANGE, USE WITH HDPE STUB ENDS	600mm	SEE NOTE 9	125 lb	3
10	PLATE (ROLLED TO SUIT PIPE O.D.)	6mm TH	SEE NOTE 9		-
11	ELECTROMAGNETIC FLOW METER C/W 2 GROUNDING RING	600mm	-		2
12	GATE VALVE	600mm	SEE NOTE 11	125 LB	2
13	GATE VALVE	200mm	SEE NOTE 11	125 LB	2
14	PIPE, DUCTILE IRON (CUT TO SUIT)	ø200mm	SEE NOTE 9		-
15	UNIFLANGE ADAPTER	DN200	MODEL 4428-065 OR EQUAL	125 lb	4
16	GASKET, FF	200mm	SEE NOTE 9	125 lb	6
17	NEOPRENE	6mm TH	60 DUROMETER		-
18	BLIND FLANGE	200mm	SEE NOTE 9	125 lb	1
19	WIDE FLANGE	W1265 x 37 x 300mm LG	SEE NOTE 9		2
20	PLATE (ROLLED TO SUIT PIPE O.D.)	12mm TH x 300mm LG	SEE NOTE 9		2
21	GATE VALVE, RF	50mm	A182 CF8M BODY	150 LB	1
22	SWING CHECK VALVE, RF	50mm	A182 CF8M BODY	150 LB	1
23	PIPE (CUT TO SUIT)	50mm	A312 GR. TP316L	SCH. 10S	-
24	90° ELBOW, BW	50mm	A312 GR. TP316L	SCH. 10S	3
25	SUMP PUMP SP-L14	50mm DISCHARGE	SEE NOTE 10		1
26	FLANGE, RF, WN	50mm	A182 F316L	SCH. 10 BORE 150 LB	2
27	GASKET	50mm	SEE NOTE 9	125 lb	3

- NOTES:**
- EXISTING GRADE ELEVATION APPROXIMATELY 230.648m.
  - ALL PIPING & UNTREATED COMPONENTS SHALL BE EPOXY PAINTED.
  - REMOVE EXISTING PIPING AND OTHER MATERIALS AS-REQUIRED.
  - PROVIDE TEMPORARY PUMPING OF WASTEWATER DURING CONSTRUCTION.
  - INSTALL PIPING AND EQUIPMENT ACCORDING TO MANUFACTURER'S SPECIFICATIONS.
  - CONTRACTOR IS RESPONSIBLE FOR CONFIRMING ALL DIMENSIONS BEFORE FABRICATION AND ASSEMBLY.
  - CONTRACTOR SHALL SUPPLY & INSTALL ø25mm ANCHOR BOLTS, MIN. OF 4 PER SUPPORT. ANCHOR BOLTS TO BE ASTM A276 TYPE 316 SS.
  - INSTALL 316 SS LINK SEALS. CORE HOLE IN CONCRETE WALLS AS REQUIRED.
  - SEE SPECIFICATION SECTION "PUMPING STATION MODIFICATIONS AND MECHANICAL WORK".
  - SEE SPECIFICATION SECTION "PUMPING STATION MODIFICATIONS AND MECHANICAL WORK"-SUMP PUMPS.
  - SEE SPECIFICATION SECTION "FLOWMETER CHAMBER MECHANICAL WORK". EQUIPMENT SPECIFIED BY CITY.
  - FLANGE NUT AND BOLTS - SEE SPECIFICATION SECTION "PUMPING STATION MODIFICATIONS AND MECHANICAL WORK".
  - CONTRACTOR TO REFER TO DRAWING 1-0164L-B0004-001 FOR ANCHOR BOLT INSTALLATION.



261	MONTCALM SEWAGE PUMPING STATION ADDITIONS (EQUIPMENT)
05358	MONTCALM SEWAGE PUMPING STATION FORCEMAIN REPLACEMENT
DRAWING NUMBER	REFERENCE DRAWINGS

**FLOOR PLAN AT ELEVATION FROM 220.550m TO 220.450m**  
SCALE: 1 : 30



NO.	REVISIONS	DATE	DESIGN	CHECK
01	REVISED ITEM 3	2012/03/16	CAF	CJR
00	ISSUED FOR TENDER, BID OPP. 907-2011	2012/02/24	CAF	JNR

 SNC-LAVALIN INC. 148 Nature Park Way Winnipeg, MB, Canada R3P 0X7 204-786-8080		ENGINEER'S SEAL  ORIGINAL DRAWING SEALED BY: J.N.REMPEL SNC-LAVALIN INC 2012/02/24 REV.00
DESIGNED BY: C. FETTERLY DRAWN BY: C. FETTERLY SCALE: 1:30 DATE: 2011/10/17 CONSULTANT NO.: 508042-0000-4500-0001	CHECKED BY: J. REMPEL APPROVED BY: C. REIMER RELEASED FOR CONSTRUCTION BY: K.R. ZUREK DATE: 2012/02/24	

 THE CITY OF WINNIPEG WATER AND WASTE DEPARTMENT		
MONTCALM WASTEWATER PUMPING STATION 2011 UPGRADES PIPING ARRANGEMENT FLOWMETER CHAMBER		
CITY DRAWING NUMBER	SHEET	REV. SIZE
1-0164L-M0010	001	01 A1

LAST SAVE: 2012/03/16 - 11:42am  
PATH: M:\508042\ENGR\45MEC\DD - General DWG\1-0164L-M0010-001-00.dwg

1-0164L-M0010-001-00.dwg