

WARNING

IF POWER EQUIPMENT OR EXPLOSIVES ARE TO BE USED FOR EXCAVATION ON THIS PROJECT THE CONTRACTOR MUST:
 1) NOTIFY THE GAS COMPANY OF THE PROPOSED LOCATION OF EXCAVATION.
 2) TAKE PRECAUTION TO AVOID DAMAGE TO GAS COMPANY INSTALLATIONS.
 SEE PROVINCIAL REGULATION 140/92 FOR DETAILS

METRIC

WHOLE NUMBERS INDICATE MILLIMETRES
 DECIMALIZED NUMBERS INDICATE METRES

84R635 - Lake Crest Rd. & Waverley St.,
 Tilt on top of 0.05m dia. x 2.4m iron pipe, 14.2m N. of S.L. of Lake Crest Rd. & 0.6m E. of E.L. of Waverley St.

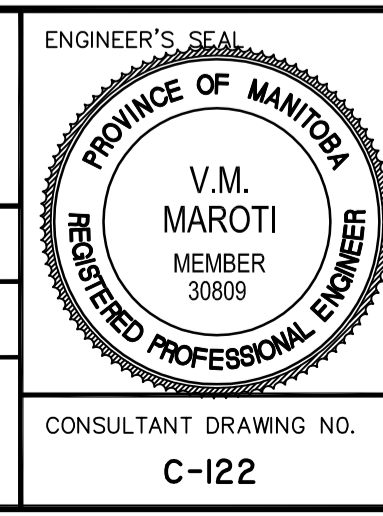


150 WM	WATERMAIN	150 WM	HYDRO	150 WM	WATERMAIN	150 WM
+	HYDRANT	+	M.T.S.	+	HYDRANT, VALVE	+
⊗	VALVE	⊗	CONCRETE	⊗	LAND DRAINAGE SEWER	⊗
300 LDS	LAND DRAINAGE SEWER	300 LDS	ASPHALT	250 WWS	WASTE WATER SEWER	250 WWS
250 WWS	WASTE WATER SEWER	250 WWS	SIDEWALK	×	PROFILE	
○	MANHOLE	○	PROPERTY LINE	□	NORTH OR WEST GUTTER	
□	CATCH BASIN	⊕	SURVEY BAR	○	SOUTH OR EAST GUTTER	
▽	CURB INLET	⊙	GEODEIC BENCHMARK	◇	NORTH OR WEST DITCH	
→	JUNCTIONS	→	DITCH	○	SOUTH OR EAST DITCH	
—	CULVERT	(31.334)	ELEVATION	△	NORTH OR WEST DITCH	
—	GAS		SIDEWALK RAMP	▽	SOUTH OR EAST DITCH	
EXISTING	LEGEND-PLAN	PROPOSED	EXISTING	LEGEND-PLAN	PROPOSED	EXISTING
EXISTING	LEGEND-PROFILE	PROPOSED	EXISTING	LEGEND-PROFILE	PROPOSED	EXISTING

LOCATION APPROVED UNDERGROUND STRUCTURES
 SUPV. U/G STRUCTURES COMMITTEE DATE
 NOTE:
 LOCATION OF UNDERGROUND STRUCTURES AS SHOWN ARE BASED ON THE BEST INFORMATION AVAILABLE BUT NO GUARANTEE IS GIVEN THAT ALL EXISTING UTILITIES ARE SHOWN OR THAT THE GIVEN LOCATIONS ARE EXACT. CONFIRMATION OF EXISTENCE AND EXACT LOCATION OF ALL SERVICES MUST BE OBTAINED FROM THE INDIVIDUAL UTILITIES BEFORE PROCEEDING WITH CONSTRUCTION.

B.M. 84R635	ELEV. 232.457m		
0	ISSUED FOR TENDER	11.07.15	V.M.M.
NO.	REVISIONS	DATE	BY

Stantec Consulting Ltd.	905 Waverley Street, Winnipeg, Manitoba Tel 204-489-5900 Fax 204-453-9012
DESIGNED BY: V.M.M.	CHECKED BY: S.B.C.
DRAWN BY: T.G.	APPROVED BY: V.M.M.
HOR. SCALE:	RELEASED FOR CONSTRUCTION:
VERTICAL:	DATE
DATE 09.07.21	DATE



THE CITY OF WINNIPEG
 PUBLIC WORKS DEPARTMENT
 ENGINEERING DIVISION

WWARP PART I
 KENASTON BOULEVARD EXTENSION - N.B. LANES
 NOTH TOWN ROAD TO BISHOP GRANDIN BOULEVARD
 ROAD WORKS
 PAVEMENT CROSS SECTIONS

SHEET 36 OF 65
 CAD FILE DRAWING NUMBER 04840c-122-XXX.dwg
 CITY DRAWING NUMBER P-3316-36

CONSULTANT DRAWING NO. C-122

X:\137\external\13704040\winning\02_design\warp\plan\04840c-122.dwg
 2010-09-17 10:04 AM By: gpl