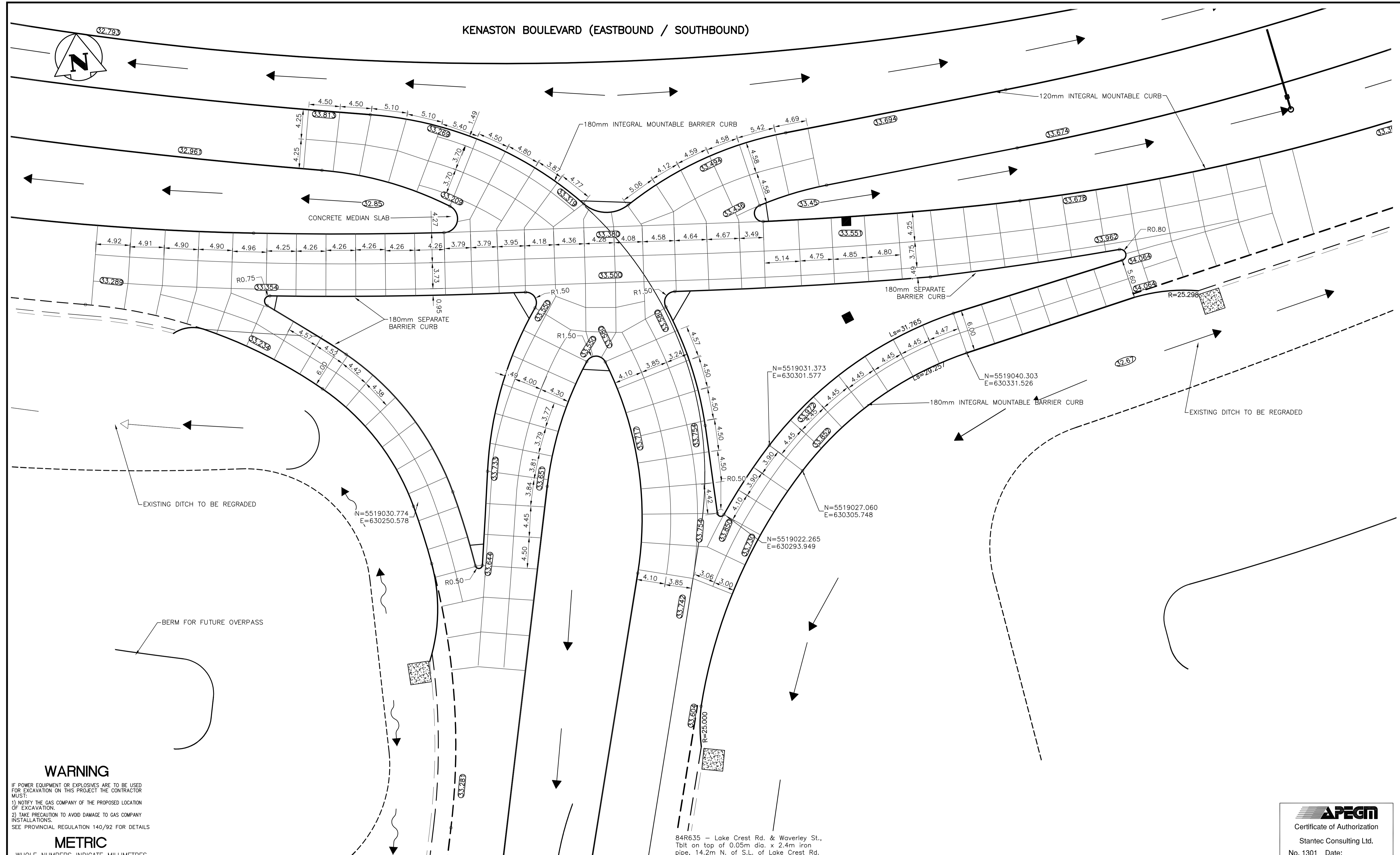


KENASTON BOULEVARD (EASTBOUND / SOUTHBOUND)



WARNING

IF POWER EQUIPMENT OR EXPLOSIVES ARE TO BE USED FOR EXCAVATION ON THIS PROJECT THE CONTRACTOR MUST:
 1) NOTIFY THE GAS COMPANY OF THE PROPOSED LOCATION OF EXCAVATION.
 2) TAKE PRECAUTION TO AVOID DAMAGE TO GAS COMPANY INSTALLATIONS.
 SEE PROVINCIAL REGULATION 140/92 FOR DETAILS

METRIC

WHOLE NUMBERS INDICATE MILLIMETRES
 DECIMALIZED NUMBERS INDICATE METRES

150 WM	WATERMAIN	150 WM	HYDRO	150 WM	WATERMAIN	150 WM
+	HYDRANT	+	M.T.S.	+	HYDRANT, VALVE	+
⊗	VALVE	⊗	CONCRETE	⊗	LAND DRAINAGE SEWER	⊗
---	300 LDS LAND DRAINAGE SEWER	---	ASPHALT	---	WASTE WATER SEWER	---
---	250 WWS WASTE WATER SEWER	---	SIDEWALK	---	PROFILE	---
○	MANHOLE	○	PROPERTY LINE	□	NORTH OR WEST GUTTER	□
□	CATCH BASIN	□	SURVEY BAR	○	SOUTH OR EAST GUTTER	○
▽	CURB INLET	▽	GEODETIC BENCHMARK	◇	NORTH OR WEST DITCH	◇
→	JUNCTIONS	→	DITCH	○	SOUTH OR EAST DITCH	○
---	CULVERT	---	ELEVATION	△	NORTH OR WEST DITCH	△
---	GAS	---	SIDEWALK RAMP	▽	SOUTH OR EAST DITCH	▽
---	EXISTING	---	LEGEND-PLAN	---	LEGEND-PROFILE	---
---	PROPOSED	---	EXISTING	---	PROPOSED	---

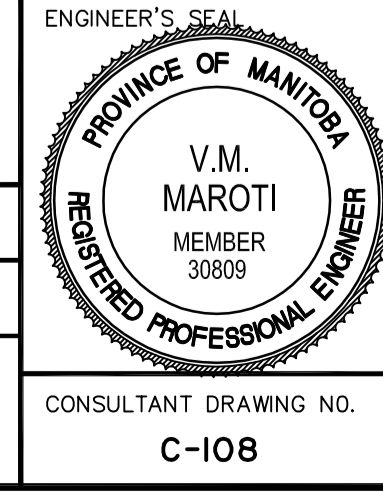
LOCATION APPROVED UNDERGROUND STRUCTURES
 SUPV. U/G STRUCTURES COMMITTEE DATE
 NOTE:
 LOCATION OF UNDERGROUND STRUCTURES AS SHOWN ARE BASED ON THE BEST INFORMATION AVAILABLE BUT NO GUARANTEE IS GIVEN THAT ALL EXISTING UTILITIES ARE SHOWN OR THAT THE GIVEN LOCATIONS ARE EXACT. CONFIRMATION OF EXISTENCE AND EXACT LOCATION OF ALL SERVICES MUST BE OBTAINED FROM THE INDIVIDUAL UTILITIES BEFORE PROCEEDING WITH CONSTRUCTION.

B.M. 84R635	ELEV. 232.457m
0	ISSUED FOR TENDER
11.07.15	V.M.M.
NO. REVISIONS	DATE BY
	DATE 09.09.10

Stantec Consulting Ltd.
 905 Waverley Street, Winnipeg, Manitoba
 Tel 204-489-5900 Fax 204-453-9012

DESIGNED BY: V.M.M. CHECKED BY: S.B.C.
 DRAWN BY: T.G. APPROVED BY: V.M.M.

HOR. SCALE: 1:250
 VERTICAL: RELEASED FOR CONSTRUCTION: DATE

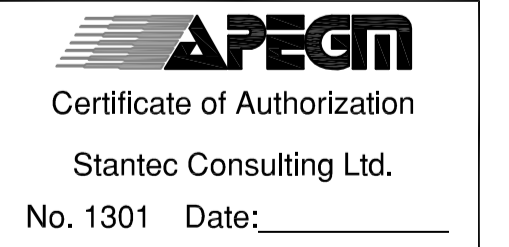


THE CITY OF WINNIPEG
 PUBLIC WORKS DEPARTMENT
 ENGINEERING DIVISION

WWARP PART I
 KENASTON BOULEVARD EXTENSION - N.B. LANES
 NORTH TOWN ROAD TO BISHOP GRANDIN BOULEVARD
 KENASTON BLVD. & BISHOP GRANDIN BLVD.
 INTERSECTION DETAIL AND JOINTS

SHEET 34 OF 65
 CAD FILE DRAWING NUMBER 04840c-108-XXX.dwg
 CITY DRAWING NUMBER P-3316-34

CONSULTANT DRAWING NO. C-108



84R635 - Lake Crest Rd. & Waverley St.,
 Bolt on top of 0.05m dia. x 2.4m iron pipe,
 14.2m N. of S.L. of Lake Crest Rd. & 0.6m E. of E.L. of Waverley St.