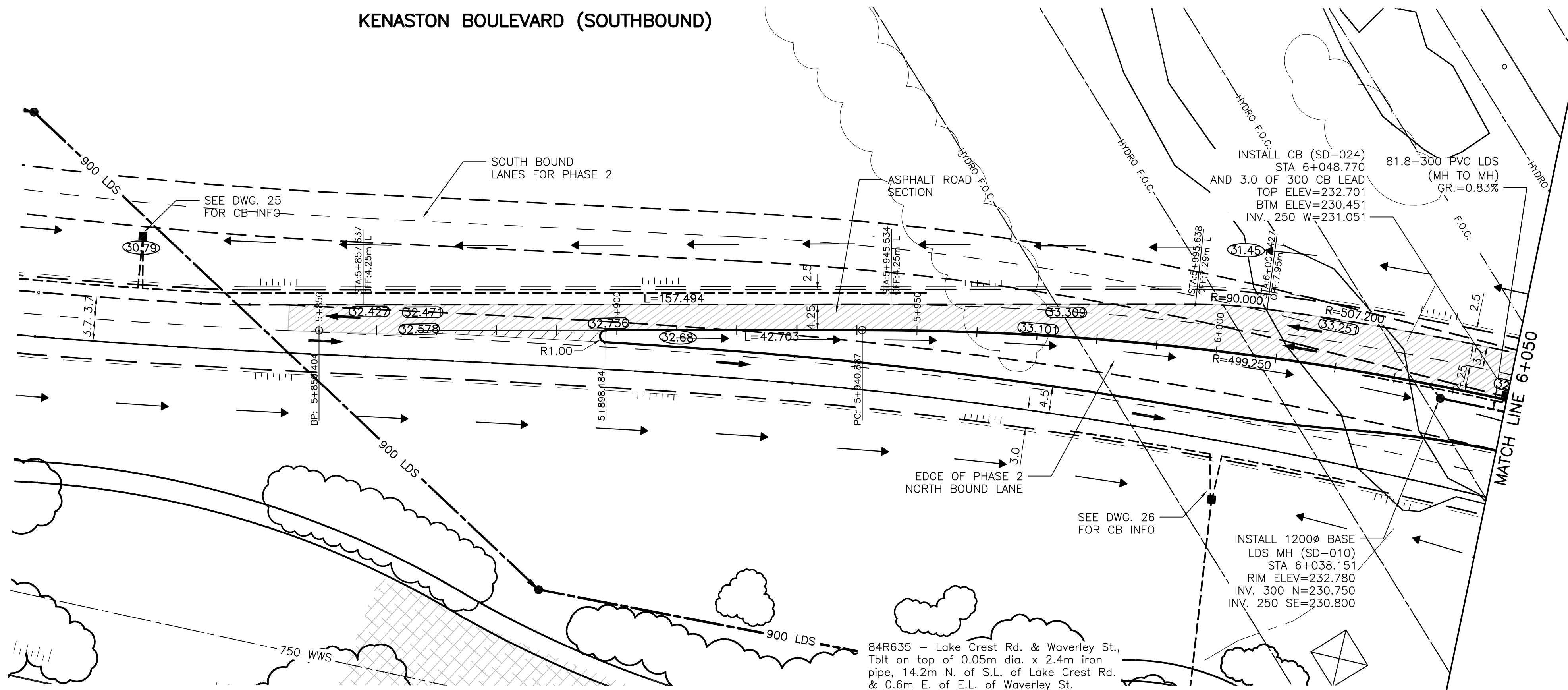
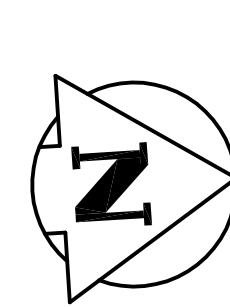


**KENASTON BOULEVARD (SOUTHBOUND)**



**WARNING**

IF POWER EQUIPMENT OR EXPLOSIVES ARE TO BE USED FOR EXCAVATION ON THIS PROJECT THE CONTRACTOR MUST:  
 1) NOTIFY THE GAS COMPANY OF THE PROPOSED LOCATION OF EXCAVATION.  
 2) TAKE PRECAUTION TO AVOID DAMAGE TO GAS COMPANY INSTALLATIONS.  
 SEE PROVINCIAL REGULATION 140/92 FOR DETAILS

**METRIC**

WHOLE NUMBERS INDICATE MILLIMETRES  
 DECIMALIZED NUMBERS INDICATE METRES



EXISTING	LEGEND-PLAN	PROPOSED	EXISTING	LEGEND-PLAN	PROPOSED	EXISTING	LEGEND-PROFILE	PROPOSED
150 WM	WATERMAIN	150 WM	HYDRO	M.T.S.	150 WM	WATERMAIN	150 WM	HYDRANT, VALVE
300 LDS	LAND DRAINAGE SEWER	300 LDS	CONCRETE	ASPHALT	250 WWS	WASTE WATER SEWER	250 WWS	LAND DRAINAGE SEWER
250 WWS	WASTE WATER SEWER	250 WWS	SIDEWALK	PROPERTY LINE	○	NORTH OR WEST GUTTER	○	SOUTH OR EAST GUTTER
○	MANHOLE	●	SURVEY BAR	GEODETIC BENCHMARK	→	DITCH	→	NORTH OR WEST DITCH
□	CATCH BASIN	⊕	ELEVATION	(31.334)	△	NORTH OR WEST DITCH	△	SOUTH OR EAST DITCH
▽	CURB INLET	▽	SIDEWALK RAMP	▽	▽	SOUTH OR EAST DITCH	▽	
+	JUNCTIONS	+						
+	CULVERT	+						
+	GAS	+						

**LOCATION APPROVED UNDERGROUND STRUCTURES**

SUPV. U/G STRUCTURES COMMITTEE DATE  
 NOTE:  
 LOCATION OF UNDERGROUND STRUCTURES AS SHOWN ARE BASED ON THE BEST INFORMATION AVAILABLE BUT NO GUARANTEE IS GIVEN THAT ALL EXISTING UTILITIES ARE SHOWN OR THAT THE GIVEN LOCATIONS ARE EXACT. CONFIRMATION OF EXISTENCE AND EXACT LOCATION OF ALL SERVICES MUST BE OBTAINED FROM THE INDIVIDUAL UTILITIES BEFORE PROCEEDING WITH CONSTRUCTION.

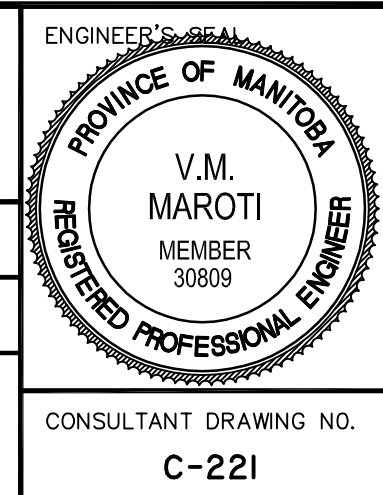
B.M. 84R635	ELEV. 232.457m		
0	ISSUED FOR TENDER	11.07.15	V.M.M.
NO.	REVISIONS	DATE	BY

**Stantec Consulting Ltd.**  
 905 Waverley Street, Winnipeg, Manitoba  
 Tel 204-489-5900 Fax 204-453-9012

DESIGNED BY: S.R.S. CHECKED BY: S.B.C.  
 DRAWN BY: T.G. APPROVED BY: V.M.M.

HOR. SCALE: 1:500  
 VERTICAL: 1:20

RELEASED FOR CONSTRUCTION: \_\_\_\_\_ DATE: \_\_\_\_\_



**THE CITY OF WINNIPEG**  
 PUBLIC WORKS DEPARTMENT  
 ENGINEERING DIVISION

**WWARP PART I**  
 KENASTON BOULEVARD EXTENSION - N.B. LANES  
 NORTH TOWN ROAD TO BISHOP GRANDIN BOULEVARD  
 HORIZONTAL & VERTICAL ALIGNMENT - A5  
 KENASTON BLVD SB - STA 5+800 TO STA 6+050

SHEET 31 OF 65  
 CAD FILE DRAWING NUMBER 04840c-227-a5.dwg  
 CITY DRAWING NUMBER P-3316-31

CONSULTANT DRAWING NO. C-221