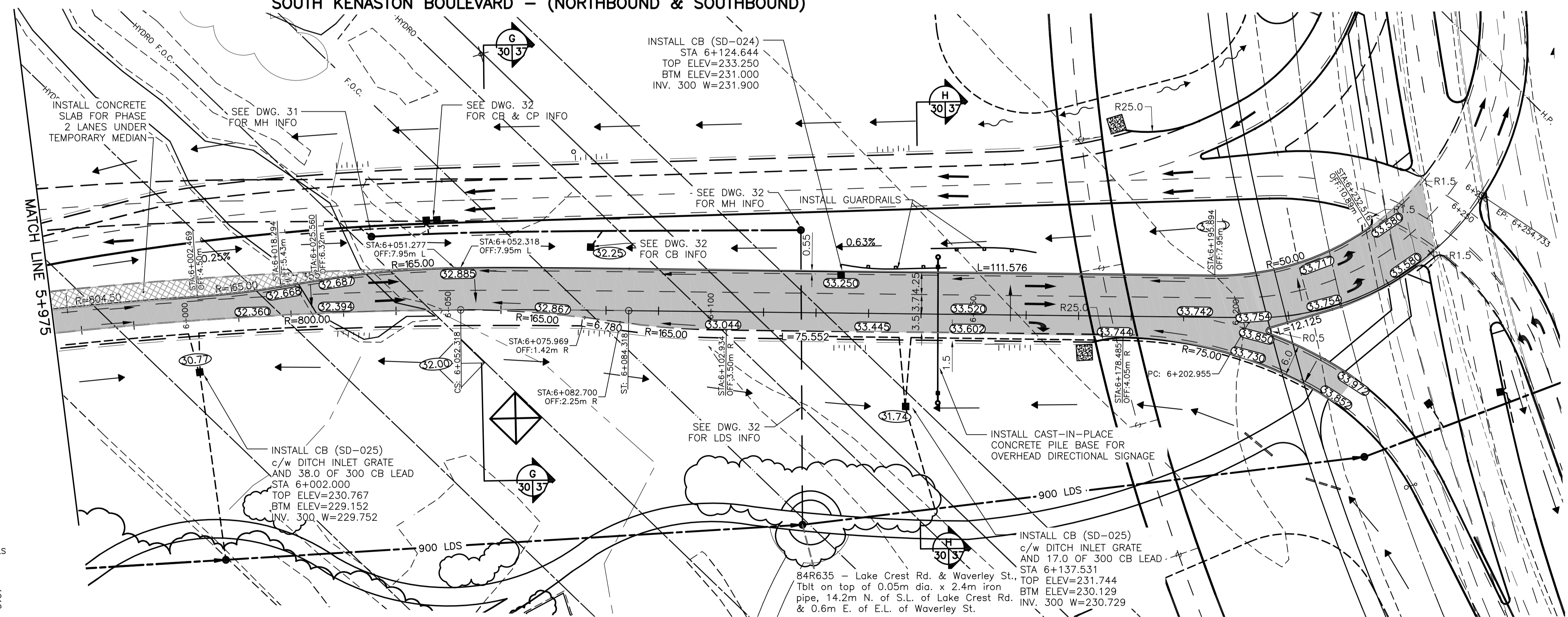


SOUTH KENASTON BOULEVARD - (NORTHBOUND & SOUTHBOUND)



WARNING

IF POWER EQUIPMENT OR EXPLOSIVES ARE TO BE USED FOR EXCAVATION ON THIS PROJECT THE CONTRACTOR MUST:
 1) NOTIFY THE GAS COMPANY OF THE PROPOSED LOCATION OF EXCAVATION.
 2) TAKE PRECAUTION TO AVOID DAMAGE TO GAS COMPANY INSTALLATIONS.
 SEE PROVINCIAL REGULATION 140/92 FOR DETAILS

METRIC

WHOLE NUMBERS INDICATE MILLIMETRES
 DECIMALIZED NUMBERS INDICATE METRES



| EXISTING | LEGEND-PLAN | PROPOSED | EXISTING | LEGEND-PLAN | PROPOSED | EXISTING | LEGEND-PROFILE | PROPOSED |
|-------------|---------------------|-------------|--------------------|--------------------|----------------------|----------------------|----------------------|----------------------|
| 150 WM | WATERMAIN | 150 WM | HYDRO | HYDRO | 150 WM | WATERMAIN | 150 WM | WATERMAIN |
| Hydrant | HYDRANT | Hydrant | M.T.S. | M.T.S. | Hydrant, Valve | HYDRANT, VALVE | Hydrant, Valve | HYDRANT, VALVE |
| Valve | VALVE | Valve | CONCRETE | CONCRETE | 300 LDS | LAND DRAINAGE SEWER | 300 LDS | LAND DRAINAGE SEWER |
| 300 LDS | LAND DRAINAGE SEWER | 300 LDS | ASPHALT | ASPHALT | 250 WWS | WASTE WATER SEWER | 250 WWS | WASTE WATER SEWER |
| 250 WWS | WASTE WATER SEWER | 250 WWS | SIDEWALK | SIDEWALK | Profile | PROFILE | Profile | PROFILE |
| Manhole | MANHOLE | Manhole | PROPERTY LINE | PROPERTY LINE | North or West Gutter | NORTH OR WEST GUTTER | North or West Gutter | NORTH OR WEST GUTTER |
| Catch Basin | CATCH BASIN | Catch Basin | Survey Bar | SURVEY BAR | South or East Gutter | SOUTH OR EAST GUTTER | South or East Gutter | SOUTH OR EAST GUTTER |
| Curb Inlet | CURB INLET | Curb Inlet | Geodetic Benchmark | GEODETIC BENCHMARK | North or West R | NORTH OR WEST R | North or West R | NORTH OR WEST R |
| Junctions | JUNCTIONS | Junctions | Ditch | DITCH | South or East R | SOUTH OR EAST R | South or East R | SOUTH OR EAST R |
| Culvert | CULVERT | Culvert | Elevation | ELEVATION | North or West Ditch | NORTH OR WEST DITCH | North or West Ditch | NORTH OR WEST DITCH |
| Gas | GAS | Gas | Sidewalk Ramp | SIDEWALK RAMP | South or East Ditch | SOUTH OR EAST DITCH | South or East Ditch | SOUTH OR EAST DITCH |

LOCATION APPROVED UNDERGROUND STRUCTURES

SUPV. U/G STRUCTURES COMMITTEE DATE

NOTE:
 LOCATION OF UNDERGROUND STRUCTURES AS SHOWN ARE BASED ON THE BEST INFORMATION AVAILABLE BUT NO GUARANTEE IS GIVEN THAT ALL EXISTING UTILITIES ARE SHOWN OR THAT THE GIVEN LOCATIONS ARE EXACT. CONFIRMATION OF EXISTENCE AND EXACT LOCATION OF ALL SERVICES MUST BE OBTAINED FROM THE INDIVIDUAL UTILITIES BEFORE PROCEEDING WITH CONSTRUCTION.

| NO. | REVISIONS | DATE | BY |
|-----|-------------------|----------|--------|
| 0 | ISSUED FOR TENDER | 11.07.15 | V.M.M. |

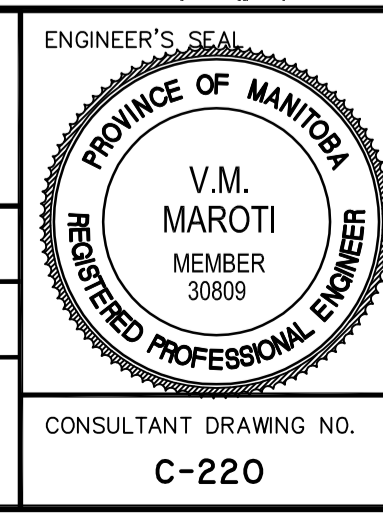
Stantec Consulting Ltd.
 905 Waverley Street, Winnipeg, Manitoba
 Tel 204-489-5900 Fax 204-453-9012

DESIGNED BY: S.R.S. CHECKED BY: S.B.C.
 DRAWN BY: T.G. APPROVED BY: V.M.M.

HOR. SCALE: 1:500
 VERTICAL: 1:20

RELEASED FOR CONSTRUCTION: DATE

CONSULTANT DRAWING NO. C-220



THE CITY OF WINNIPEG
 PUBLIC WORKS DEPARTMENT
 ENGINEERING DIVISION

WWARP PART I
 KENASTON BOULEVARD EXTENSION - N.B. LANES
 NORTH TOWN ROAD TO BISHOP GRANDIN BOULEVARD
 HORIZONTAL & VERTICAL ALIGNMENT - A4
 KENASTON BLVD. S - STA 5+975 TO STA 6+250

SHEET 30 OF 65
 CAD FILE DRAWING NUMBER 04840c-222-a4.dwg
 CITY DRAWING NUMBER P-3316-30