

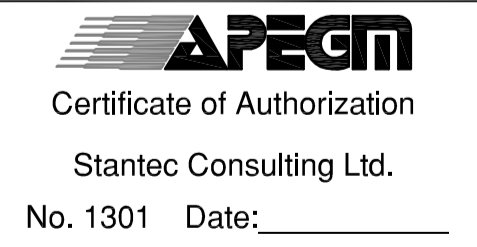
**WARNING**

IF POWER EQUIPMENT OR EXPLOSIVES ARE TO BE USED FOR EXCAVATION ON THIS PROJECT THE CONTRACTOR MUST:  
 1) NOTIFY THE GAS COMPANY OF THE PROPOSED LOCATION OF EXCAVATION.  
 2) TAKE PRECAUTION TO AVOID DAMAGE TO GAS COMPANY INSTALLATIONS.  
 SEE PROVINCIAL REGULATION 140/92 FOR DETAILS

**METRIC**

WHOLE NUMBERS INDICATE MILLIMETRES  
 DECIMALIZED NUMBERS INDICATE METRES

B.M. 84R635 - Lake Crest Rd. & Waverley St.,  
 Tilt on top of 0.05m dia. x 2.4m iron  
 pipe, 14.2m N. of S.L. of Lake Crest Rd.  
 & 0.6m E. of E.L. of Waverley St.



150 WWS		150 WM		HYDRO		150 WM		WATERMAIN		150 WWS	
○	HYDRANT	◆	M.T.S.	—	CONCRETE	—	300 LDS	—	HYDRANT, VALVE	—	300 LDS
⊗	VALVE	⊗	CONCRETE	—	ASPHALT	—	250 WWS	—	LAND DRAINAGE SEWER	—	250 WWS
—	LAND DRAINAGE SEWER	—	ASPHALT	—	—	—	—	—	WASTE WATER SEWER	—	—
—	WASTE WATER SEWER	—	—	—	—	—	—	—	—	—	—
○	MANHOLE	○	PROPERTY LINE	—	—	—	—	—	—	—	—
□	CATCH BASIN	□	SURVEY BAR	—	—	—	—	—	—	—	—
▽	CURB INLET	▽	GEODETIC BENCHMARK	—	—	—	—	—	—	—	—
—	JUNCTIONS	—	DITCH	—	—	—	—	—	—	—	—
—	CULVERT	—	ELEVATION	—	—	—	—	—	—	—	—
—	GAS	—	SIDEWALK RAMP	—	—	—	—	—	—	—	—
—	LEGEND-PLAN	—	PROPOSED	—	—	—	—	—	—	—	—
—	EXISTING	—	EXISTING	—	—	—	—	—	—	—	—

**LOCATION APPROVED UNDERGROUND STRUCTURES**

SUPV. U/G STRUCTURES COMMITTEE DATE

NOTE:  
 LOCATION OF UNDERGROUND STRUCTURES AS SHOWN ARE BASED ON THE BEST INFORMATION AVAILABLE BUT NO GUARANTEE IS GIVEN THAT ALL EXISTING UTILITIES ARE SHOWN OR THAT THE GIVEN LOCATIONS ARE EXACT. CONFIRMATION OF EXISTENCE AND EXACT LOCATION OF ALL SERVICES MUST BE OBTAINED FROM THE INDIVIDUAL UTILITIES BEFORE PROCEEDING WITH CONSTRUCTION.

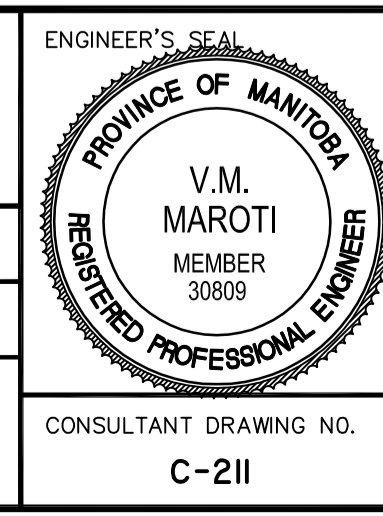
NO.	REVISIONS	DATE	BY
0	ISSUED FOR TENDER	11.07.15	V.M.M.

**Stantec Consulting Ltd.**  
 905 Waverley Street, Winnipeg, Manitoba  
 Tel 204-489-5900 Fax 204-453-9012

DESIGNED BY: V.M.M. CHECKED BY: S.B.C.  
 DRAWN BY: T.G. APPROVED BY: V.M.M.

HOR. SCALE: 1:500  
 VERTICAL: 1:20

RELEASED FOR CONSTRUCTION: \_\_\_\_\_  
 DATE: \_\_\_\_\_



**THE CITY OF WINNIPEG**  
 PUBLIC WORKS DEPARTMENT  
 ENGINEERING DIVISION

**WWARP PART I**  
 KENASTON BOULEVARD EXTENSION - N.B. LANES  
 NORTH TOWN ROAD TO BISHOP GRANDIN BOULEVARD  
 HORIZONTAL & VERTICAL ALIGNMENT - A2  
 BISHOP GRANDIN BLVD. WB - STA 1+875 TO STA 2+125

SHEET 21 OF 65  
 CAD FILE DRAWING NUMBER 04840c-207-a2.dwg  
 CITY DRAWING NUMBER P-3316-21

CONSULTANT DRAWING NO. C-211