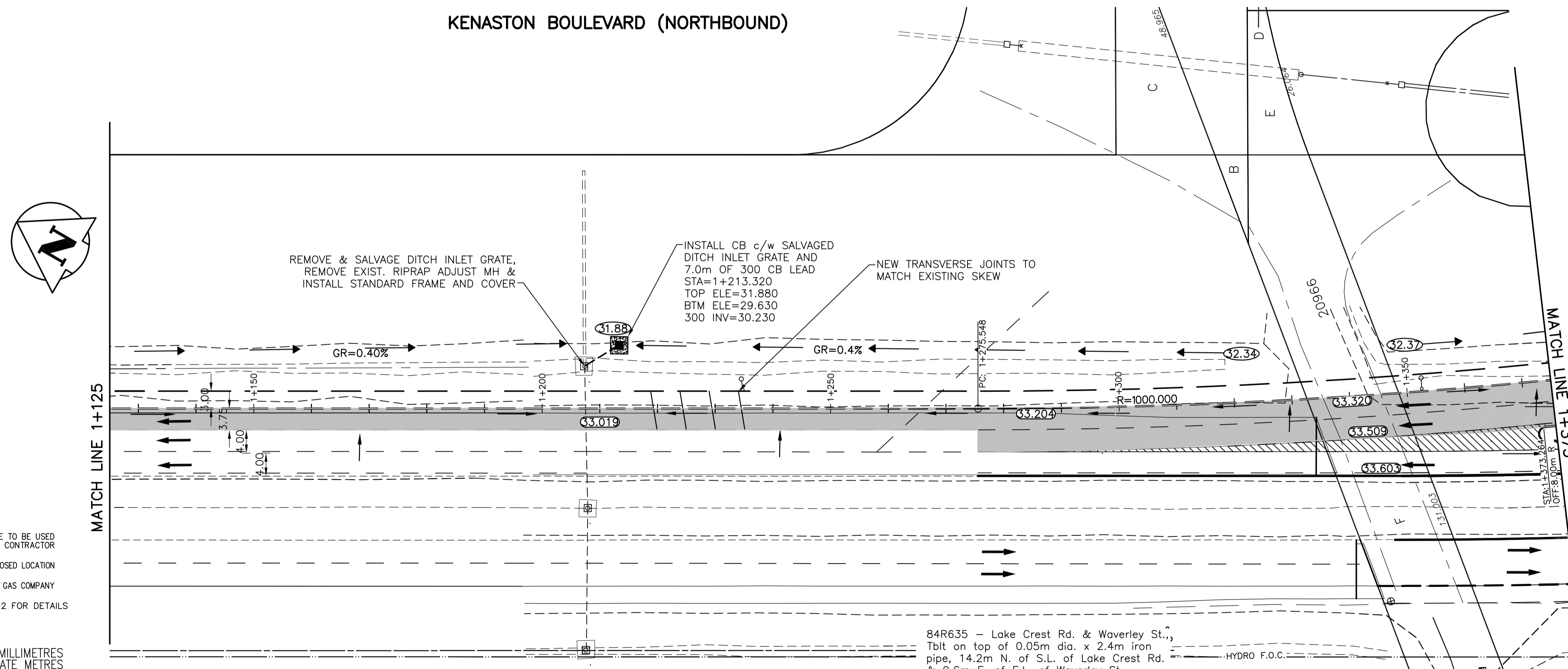


KENASTON BOULEVARD (NORTHBOUND)



WARNING

IF POWER EQUIPMENT OR EXPLOSIVES ARE TO BE USED FOR EXCAVATION ON THIS PROJECT THE CONTRACTOR MUST:
 1) NOTIFY THE GAS COMPANY OF THE PROPOSED LOCATION OF EXCAVATION.
 2) TAKE PRECAUTION TO AVOID DAMAGE TO GAS COMPANY INSTALLATIONS.
 SEE PROVINCIAL REGULATION 140/92 FOR DETAILS

METRIC

WHOLE NUMBERS INDICATE MILLIMETRES
 DECIMALIZED NUMBERS INDICATE METRES

APEGM
 Certificate of Authorization
 Stantec Consulting Ltd.
 No. 1301 Date: _____

150 W/W	WATERMAIN	150 W/W	HYDRO	150 W/W	WATERMAIN	150 W/W
⊕	HYDRANT	⊕	M.T.S.	⊕	HYDRANT, VALVE	⊕
⊗	VALVE	⊗	CONCRETE	⊗	LAND DRAINAGE SEWER	⊗
—○—	LAND DRAINAGE SEWER	—○—	ASPHALT	—○—	WASTE WATER SEWER	—○—
—○—	WASTE WATER SEWER	—○—	SIDEWALK	—○—	PROPERTY LINE	—○—
○	MANHOLE	○	PROPERTY LINE	○	NORTH OR WEST GUTTER	○
□	CATCH BASIN	□	SURVEY BAR	□	SOUTH OR EAST GUTTER	□
▽	CURB INLET	▽	GEODETIC BENCHMARK	▽	NORTH OR WEST DITCH	▽
—○—	JUNCTIONS	—○—	DITCH	—○—	SOUTH OR EAST DITCH	—○—
—○—	CULVERT	—○—	ELEVATION	—○—	NORTH OR WEST DITCH	—○—
—○—	GAS	—○—	SIDEWALK RAMP	—○—	SOUTH OR EAST DITCH	—○—
—○—	LEGEND-PLAN	—○—	PROPOSED	—○—	EXISTING	—○—

LOCATION APPROVED UNDERGROUND STRUCTURES

SUPV. U/G STRUCTURES COMMITTEE DATE _____
 NOTE:
 LOCATION OF UNDERGROUND STRUCTURES AS SHOWN ARE BASED ON THE BEST INFORMATION AVAILABLE BUT NO GUARANTEE IS GIVEN THAT ALL EXISTING UTILITIES ARE SHOWN OR THAT THE GIVEN LOCATIONS ARE EXACT. CONFIRMATION OF EXISTENCE AND EXACT LOCATION OF ALL SERVICES MUST BE OBTAINED FROM THE INDIVIDUAL UTILITIES BEFORE PROCEEDING WITH CONSTRUCTION.

B.M. 84R635	ELEV. 232.457m		
0	ISSUED FOR TENDER	11.07.15	V.M.M.
NO. REVISIONS	DATE	BY	DATE

Stantec Consulting Ltd.
 905 Waverley Street, Winnipeg, Manitoba
 Tel 204-489-5900 Fax 204-453-9012

DESIGNED BY: V.M.M.	CHECKED BY: S.B.C.
DRAWN BY: T.G.	APPROVED BY: V.M.M.
HOR. SCALE: 1:500	RELEASED FOR CONSTRUCTION: _____
VERTICAL: 1:20	DATE: _____

ENGINEER'S SEAL
PROVINCE OF MANITOBA
REGISTERED PROFESSIONAL ENGINEER
 V.M. MAROTI
 MEMBER 30809
 CONSULTANT DRAWING NO. C-208

THE CITY OF WINNIPEG
 PUBLIC WORKS DEPARTMENT
 ENGINEERING DIVISION

WWARP PART I
 KENASTON BOULEVARD EXTENSION - N.B. LANES
 NORTH TOWN ROAD TO BISHOP GRANDIN BOULEVARD
 HORIZONTAL & VERTICAL ALIGNMENT - A2
 KENASTON BLVD. NB - STA 1+125 TO STA 1+375

SHEET 18 OF 65
 CAD FILE DRAWING NUMBER 04840c-207-a2.dwg
 CITY DRAWING NUMBER P-3316-18