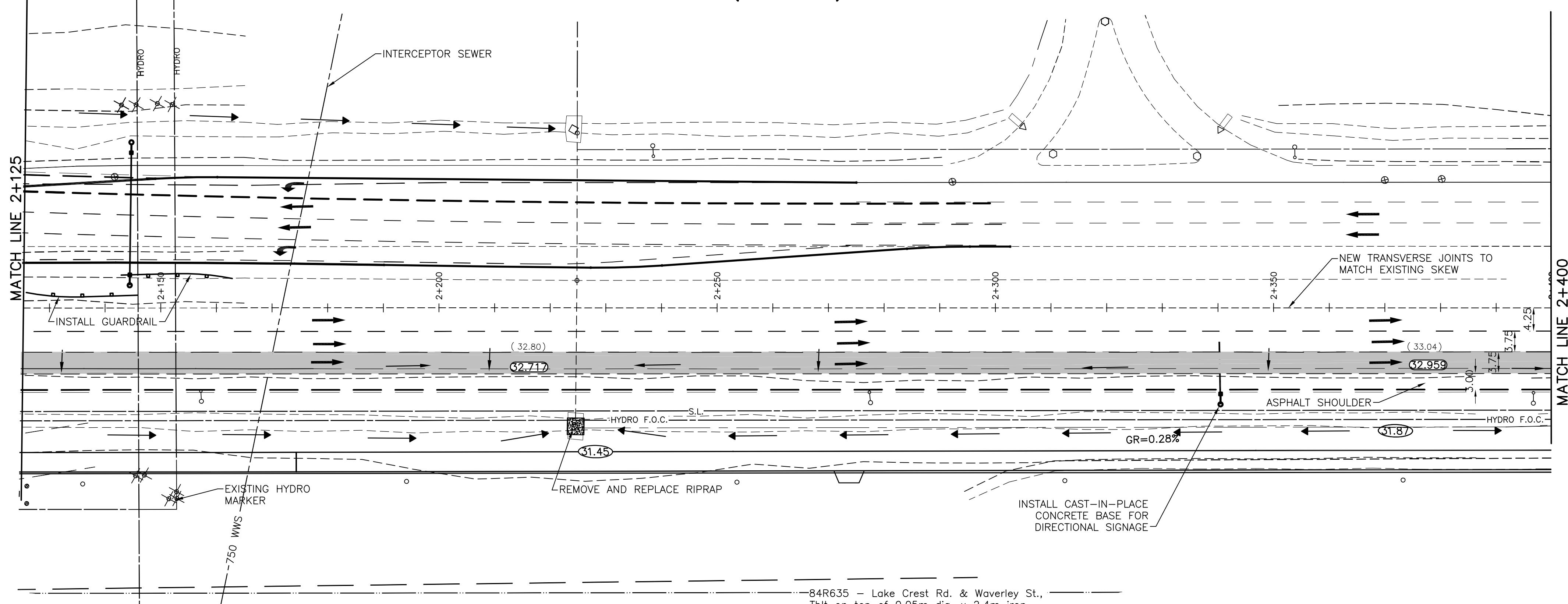


BISHOP GRANDIN BOULEVARD (EASTBOUND)



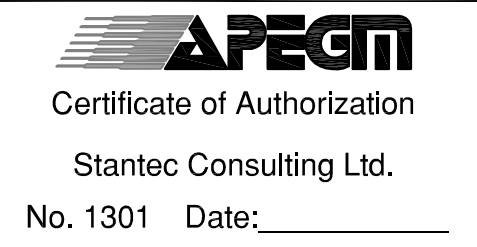
WARNING

IF POWER EQUIPMENT OR EXPLOSIVES ARE TO BE USED FOR EXCAVATION ON THIS PROJECT THE CONTRACTOR MUST:
 1) NOTIFY THE GAS COMPANY OF THE PROPOSED LOCATION OF EXCAVATION.
 2) TAKE PRECAUTION TO AVOID DAMAGE TO GAS COMPANY INSTALLATIONS.
 SEE PROVINCIAL REGULATION 140/92 FOR DETAILS

METRIC

WHOLE NUMBERS INDICATE MILLIMETRES
 DECIMALIZED NUMBERS INDICATE METRES

B.M. 84R635
 ELEV. 232.457m
 Tilt on top of 0.05m dia. x 2.4m iron pipe, 14.2m N. of S.L. of Lake Crest Rd. & 0.6m E. of E.L. of Waverley St.



150 W.M.		300 L.D.S.		250 W.W.S.		150 W.M.		300 L.D.S.		250 W.W.S.	
○	WATERMAIN	○	HYDRANT	○	VALVE	○	LAND DRAINAGE SEWER	○	WASTE WATER SEWER	○	MANHOLE
○	HYDRANT	○	VALVE	○	LAND DRAINAGE SEWER	○	WASTE WATER SEWER	○	MANHOLE	○	CATCH BASIN
○	CONCRETE	○	ASPHALT	○	SIDEWALK	○	PROPERTY LINE	○	SURVEY BAR	○	GEODETIC BENCHMARK
○	PROPERTY LINE	○	SURVEY BAR	○	GEODETIC BENCHMARK	○	DITCH	○	ELEVATION	○	SIDEWALK RAMP
○	NORTH OR WEST GUTTER	○	SOUTH OR EAST GUTTER	○	NORTH OR WEST DITCH	○	SOUTH OR EAST DITCH	○	LEGEND-PLAN	○	PROPOSED
○	LEGEND-PLAN	○	PROPOSED	○	EXISTING	○	LEGEND-PROFILE	○	PROPOSED	○	EXISTING

LOCATION APPROVED UNDERGROUND STRUCTURES

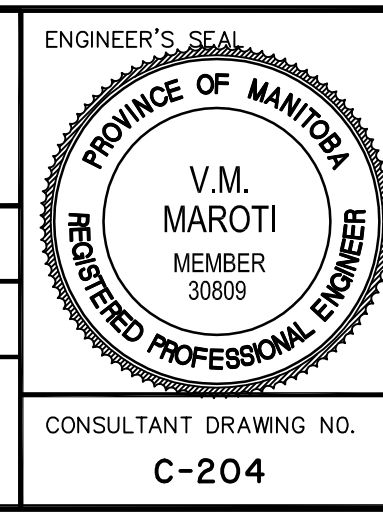
NO.	REVISIONS	DATE	BY
0	ISSUED FOR TENDER	11.07.15	V.M.M.

Stantec Consulting Ltd.
 905 Waverley Street, Winnipeg, Manitoba
 Tel 204-489-5900 Fax 204-453-9012

DESIGNED BY: V.M.M. CHECKED BY: S.B.C.
 DRAWN BY: T.G. APPROVED BY: V.M.M.

HOR. SCALE: 1:500
 VERTICAL: 1:20

RELEASSED FOR CONSTRUCTION: _____
 DATE: _____



THE CITY OF WINNIPEG
 PUBLIC WORKS DEPARTMENT
 ENGINEERING DIVISION

WWARP PART I
 KENASTON BOULEVARD EXTENSION - N.B. LANES
 NORTH TOWN ROAD TO BISHOP GRANDIN BOULEVARD
 HORIZONTAL & VERTICAL ALIGNMENT - AI
 BISHOP GRANDIN BLVD. EB - STA 2+125 TO STA 2+400

SHEET 15 OF 65
 CAD FILE DRAWING NUMBER 04840c-201-a1.dwg
 CITY DRAWING NUMBER P-3316-15

CONSULTANT DRAWING NO. C-204