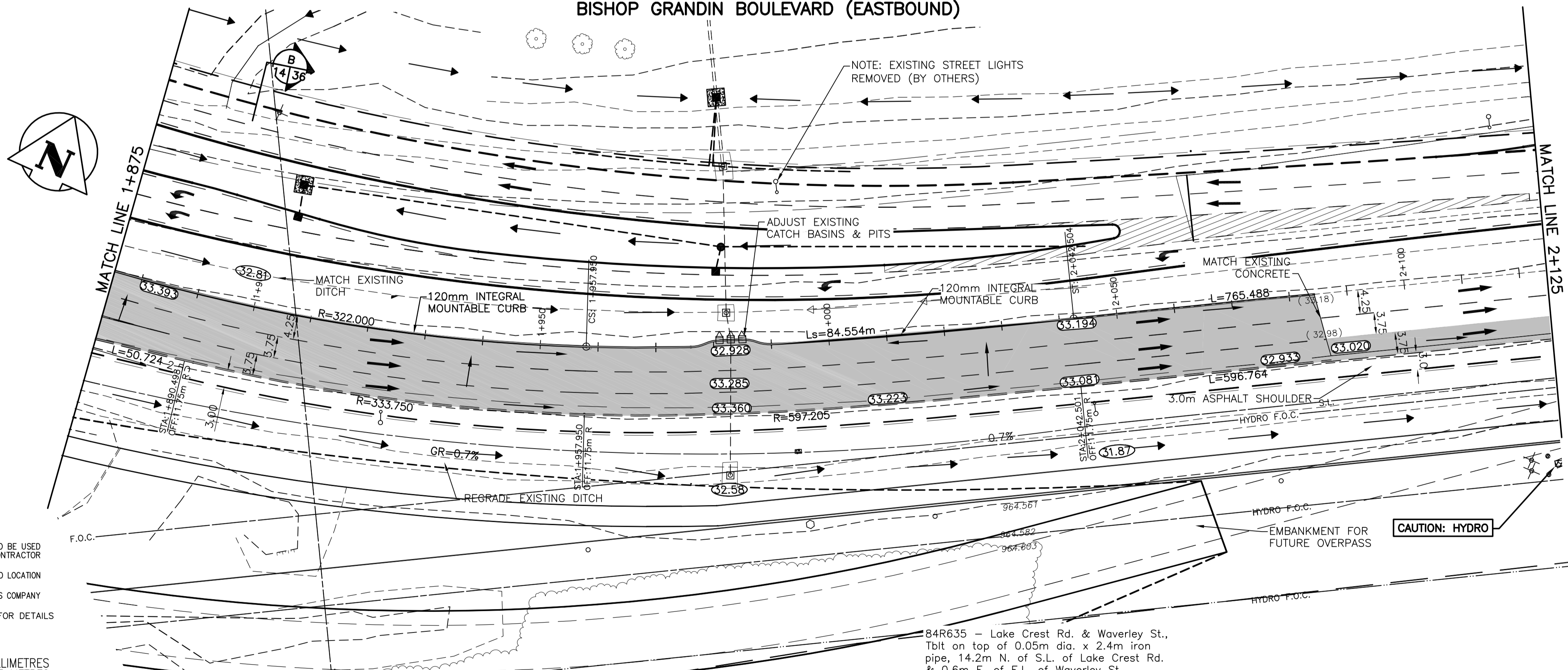


1+875 1+900 1+925 1+950 1+975 2+000 2+025 2+050 2+075 2+100 2+125

**BISHOP GRANDIN BOULEVARD (EASTBOUND)**



**WARNING**

IF POWER EQUIPMENT OR EXPLOSIVES ARE TO BE USED FOR EXCAVATION ON THIS PROJECT THE CONTRACTOR MUST:  
 1) NOTIFY THE GAS COMPANY OF THE PROPOSED LOCATION OF EXCAVATION.  
 2) TAKE PRECAUTION TO AVOID DAMAGE TO GAS COMPANY INSTALLATIONS.  
 SEE PROVINCIAL REGULATION 140/92 FOR DETAILS

**METRIC**

WHOLE NUMBERS INDICATE MILLIMETRES  
 DECIMALIZED NUMBERS INDICATE METRES

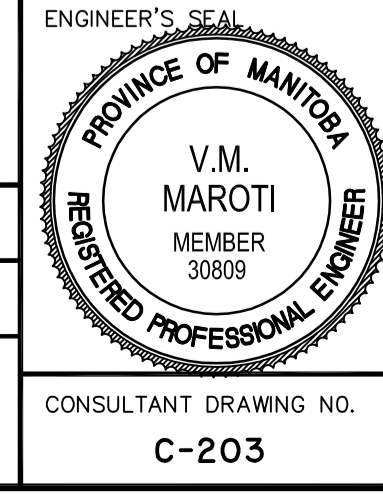
EXISTING	LEGEND-PLAN	PROPOSED	EXISTING	LEGEND-PLAN	PROPOSED	EXISTING	LEGEND-PROFILE	PROPOSED
	WATERMAIN			HYDRO			WATERMAIN	
	HYDRANT			M.T.S.			HYDRANT, VALVE	
	VALVE			CONCRETE			LAND DRAINAGE SEWER	
	LAND DRAINAGE SEWER			ASPHALT			WASTE WATER SEWER	
	WASTE WATER SEWER			SIDEWALK			C PROFILE	
	MANHOLE			PROPERTY LINE			NORTH OR WEST GUTTER	
	CATCH BASIN			SURVEY BAR			SOUTH OR EAST GUTTER	
	CURB INLET			GEODETIC BENCHMARK			NORTH OR WEST R	
	JUNCTIONS			DITCH			SOUTH OR EAST R	
	CULVERT			ELEVATION			NORTH OR WEST DITCH	
	GAS			SIDEWALK RAMP			SOUTH OR EAST DITCH	

**LOCATION APPROVED UNDERGROUND STRUCTURES**  
 SUPV. U/G STRUCTURES COMMITTEE DATE  
 NOTE: LOCATION OF UNDERGROUND STRUCTURES AS SHOWN ARE BASED ON THE BEST INFORMATION AVAILABLE BUT NO GUARANTEE IS GIVEN THAT ALL EXISTING UTILITIES ARE SHOWN OR THAT THE GIVEN LOCATIONS ARE EXACT. CONFIRMATION OF EXISTENCE AND EXACT LOCATION OF ALL SERVICES MUST BE OBTAINED FROM THE INDIVIDUAL UTILITIES BEFORE PROCEEDING WITH CONSTRUCTION.

NO.	REVISIONS	DATE	BY
0	ISSUED FOR TENDER	11.07.15	V.M.M.

**Stantec Consulting Ltd.**  
 905 Waverley Street, Winnipeg, Manitoba  
 Tel 204-489-5900 Fax 204-453-9012

DESIGNED BY: V.M.M.	CHECKED BY: S.B.C.
DRAWN BY: T.G.	APPROVED BY: V.M.M.
HOR. SCALE: 1:500	RELEASED FOR CONSTRUCTION: DATE
VERTICAL: 1:20	



**THE CITY OF WINNIPEG**  
 PUBLIC WORKS DEPARTMENT  
 ENGINEERING DIVISION

**WWARP PART I**  
 KENASTON BOULEVARD EXTENSION - N.B. LANES  
 NORTH TOWN ROAD TO BISHOP GRANDIN BOULEVARD  
 HORIZONTAL & VERTICAL ALIGNMENT - AI  
 BISHOP GRANDIN BLVD. EB - STA 1+875 TO STA 2+125

SHEET 14 OF 65  
 CAD FILE DRAWING NUMBER 04840c-201-a1.dwg  
 CITY DRAWING NUMBER P-3316-14

CONSULTANT DRAWING NO. C-203