

LEGEND

NEW SUB BASE CONSTRUCTION	
EXISTING SUBSTRUCTURE TO REMAIN	
NEW PAVEMENT OVER EXISTING SUBSTRUCTURE	

84R635 - Lake Crest Rd. & Waverley St.,
 Tilt on top of 0.05m dia. x 2.4m iron
 pipe, 14.2m N. of S.L. of Lake Crest Rd.
 & 0.6m E. of E.L. of Waverley St.

APEGM
 Certificate of Authorization
 Stantec Consulting Ltd.
 No. 1301 Date: _____

V:\1301\work\13010480\warping\02_dwg\kenast_boulev.dwg (04840c-105-04840c) 11/07/15 10:28:04 AM By: [redacted]

	WATERMAIN		NEW BASE CONSTRUCTION			WATERMAIN	
	HYDRANT		SALVAGED BASE			LAND DRAINAGE SEWER	
	VALVE		NEW PAV'T OVER EX. BASE			LAND DRAINAGE SEWER	
	LAND DRAINAGE SEWER		HYDRO			WASTE WATER SEWER	
	WASTE WATER SEWER		M.T.S.			WASTE WATER SEWER	
	MANHOLE		PROPERTY LINE			NORTH OR WEST GUTTER	
	CATCH BASIN		SURVEY BAR			SOUTH OR EAST GUTTER	
	CURB INLET		GEODETIC BENCHMARK			NORTH OR WEST DITCH	
	JUNCTIONS		DITCH			SOUTH OR EAST DITCH	
	CULVERT		ELEVATION			NORTH OR WEST DITCH	
	GAS		SIDEWALK RAMP			SOUTH OR EAST DITCH	
	EXISTING LEGEND-PLAN		PROPOSED LEGEND-PLAN			EXISTING LEGEND-PROFILE	

LOCATION APPROVED UNDERGROUND STRUCTURES

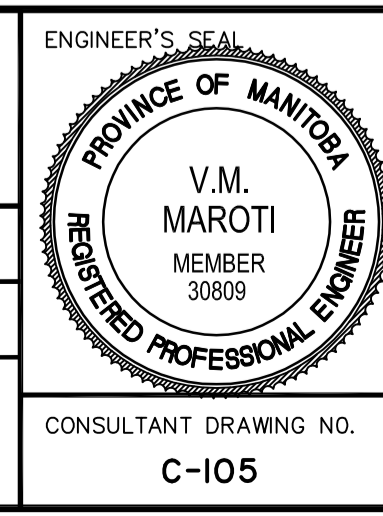
SUPV. U/G STRUCTURES COMMITTEE DATE

NOTE:
 LOCATION OF UNDERGROUND STRUCTURES AS SHOWN ARE BASED ON THE BEST INFORMATION AVAILABLE BUT NO GUARANTEE IS GIVEN THAT ALL EXISTING UTILITIES ARE SHOWN OR THAT THE GIVEN LOCATIONS ARE EXACT. CONFIRMATION OF EXISTENCE AND EXACT LOCATION OF ALL SERVICES MUST BE OBTAINED FROM THE INDIVIDUAL UTILITIES BEFORE PROCEEDING WITH CONSTRUCTION.

B.M. 84R635	ELEV. 232.457m		
0	ISSUED FOR TENDER	11.07.15	V.M.M.
NO.	REVISIONS	DATE	BY

Stantec Consulting Ltd.
 905 Waverley Street, Winnipeg, Manitoba
 Tel 204-489-5900 Fax 204-453-9012

DESIGNED BY	S.R.S.	CHECKED BY	S.B.C.
DRAWN BY	T.G.	APPROVED BY	V.M.M.
HOR. SCALE:	1:1000	RELEASED FOR CONSTRUCTION:	
VERTICAL:		DATE	09.07.21



THE CITY OF WINNIPEG
 PUBLIC WORKS DEPARTMENT
 ENGINEERING DIVISION

WWARP PART I
 KENASTON BOULEVARD EXTENSION - N.B. LANES
 NORTH TOWN ROAD TO BISHOP GRANDIN BOULEVARD
 CONSTRUCTION & WIDENING OF
 SUBSTRUCTURE MATERIAL

SHEET 5 OF 65
 CAD FILE DRAWING NUMBER 04840c-122-XXX.dwg
 CITY DRAWING NUMBER P-3316-05

CONSULTANT DRAWING NO. C-105