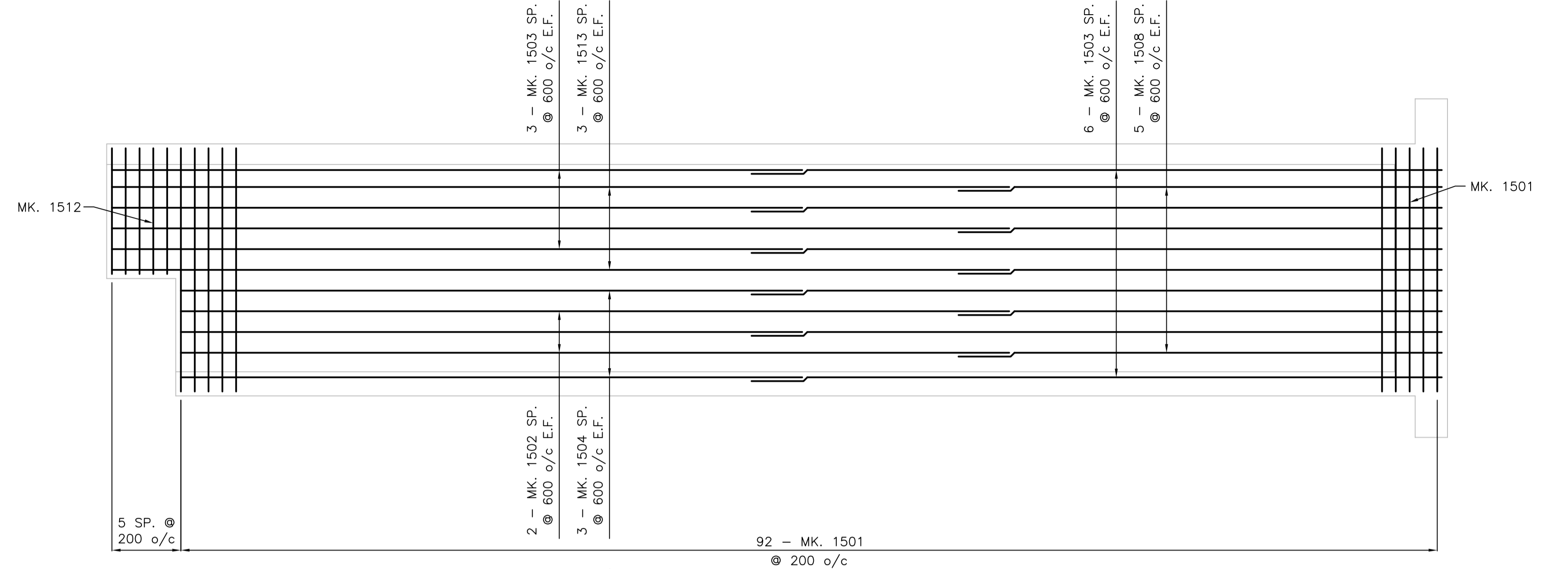
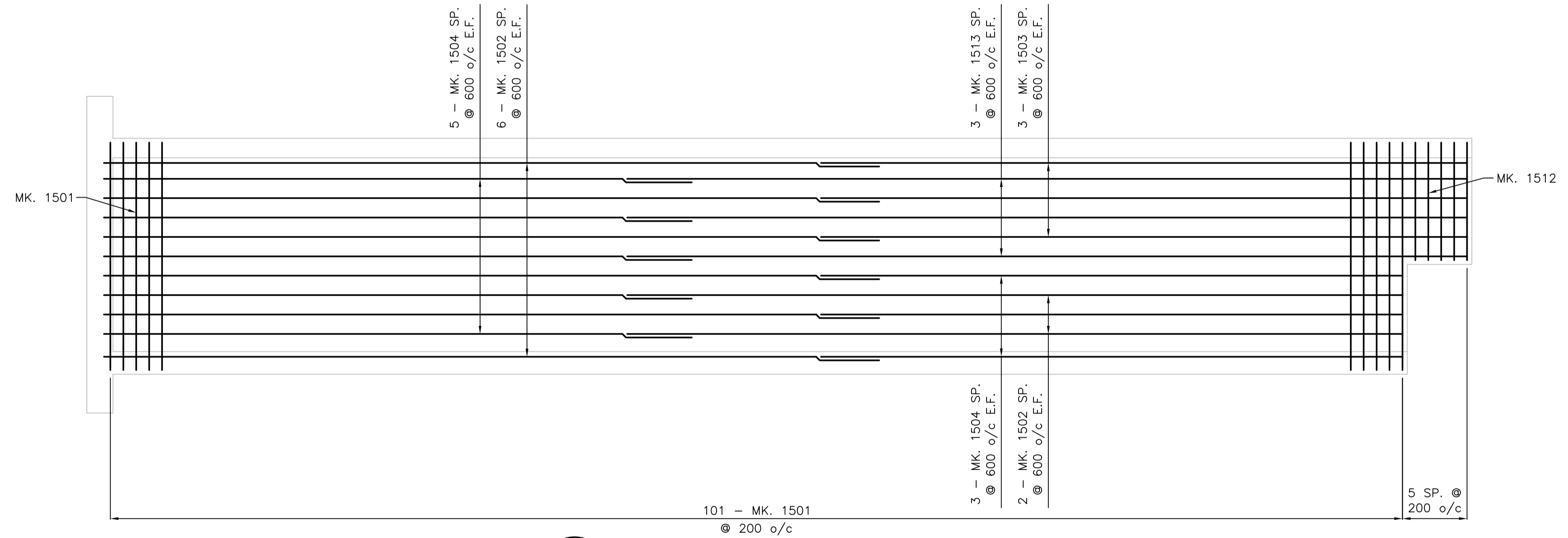


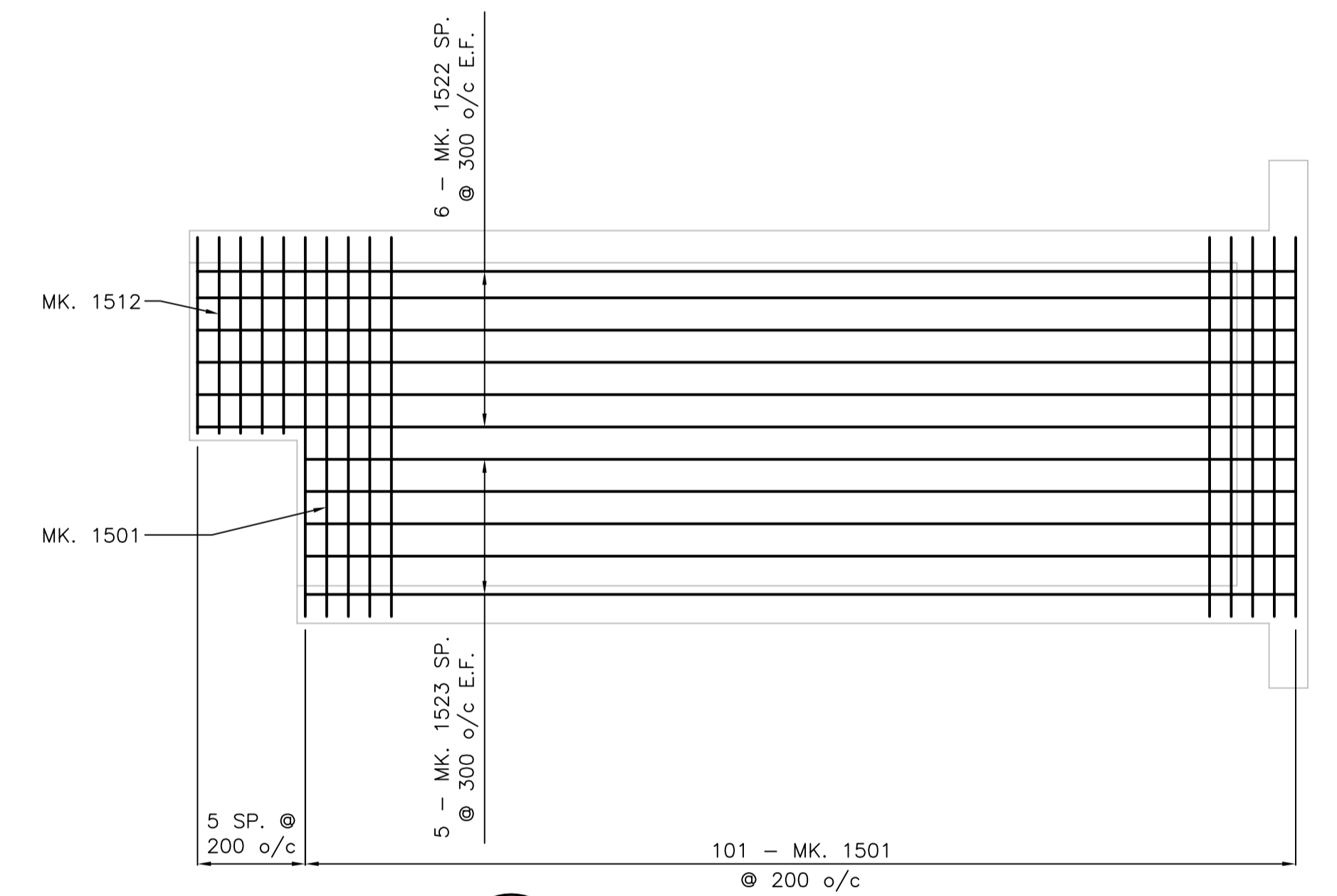
**A** INTLET SHAFT WALL SECTION  
51 55



**B** OUTLET SHAFT WALL SECTION  
51 55



**C** OUTLET SHAFT WALL SECTION  
51 55



**D** INLET SHAFT WALL SECTION  
51 55

V:\1137\Drawings\113704648\Drawings\02\_Design\Sheet\Files\Culvert\_expanded\048405-205-727.dwg  
 Date: 2011 Jul 15 10:47am Login: GJA



**LOCATION APPROVED UNDERGROUND STRUCTURES**

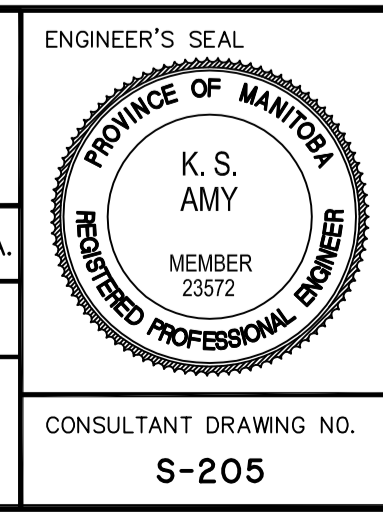
SUPV. U/G STRUCTURES COMMITTEE	DATE

**NOTE:**  
 LOCATION OF UNDERGROUND STRUCTURES AS SHOWN ARE BASED ON THE BEST INFORMATION AVAILABLE BUT NO GUARANTEE IS GIVEN THAT ALL EXISTING UTILITIES ARE SHOWN OR THAT THE GIVEN LOCATIONS ARE EXACT. CONFIRMATION OF EXISTENCE AND EXACT LOCATION OF ALL SERVICES MUST BE OBTAINED FROM THE INDIVIDUAL UTILITIES BEFORE PROCEEDING WITH CONSTRUCTION.

B.M. ELEV.	NO.	REVISIONS	DATE	BY
	0	ISSUED FOR TENDER	11.07.15	K.S.A.

**Stantec Consulting Ltd.**  
 905 Waverley Street, Winnipeg, Manitoba  
 Tel 204-489-5900 Fax 204-453-9012

DESIGNED BY: K.S.A.	CHECKED BY: V.M.M. / K.S.A.
DRAWN BY: J.M.B.	APPROVED BY: K.S.A.
HOR. SCALE: 1:50	RELEASED FOR CONSTRUCTION: _____
VERTICAL: _____	DATE: 09.12.11



**THE CITY OF WINNIPEG**  
 PUBLIC WORKS DEPARTMENT  
 ENGINEERING DIVISION

**WWARP PART I**  
 KENASTON BOULEVARD EXTENSION - N.B. LANES  
 NORTH TOWN ROAD TO BISHOP GRANDIN BOULEVARD  
 CONCRETE CULVERT EXTENSION  
 REINFORCING DETAILS - SHEET 5 OF 6

CONSULTANT DRAWING NO. S-205

SHEET 55 OF 65
CAD FILE DRAWING NUMBER 048405-205-727.dwg
CITY DRAWING NUMBER C375-II-17