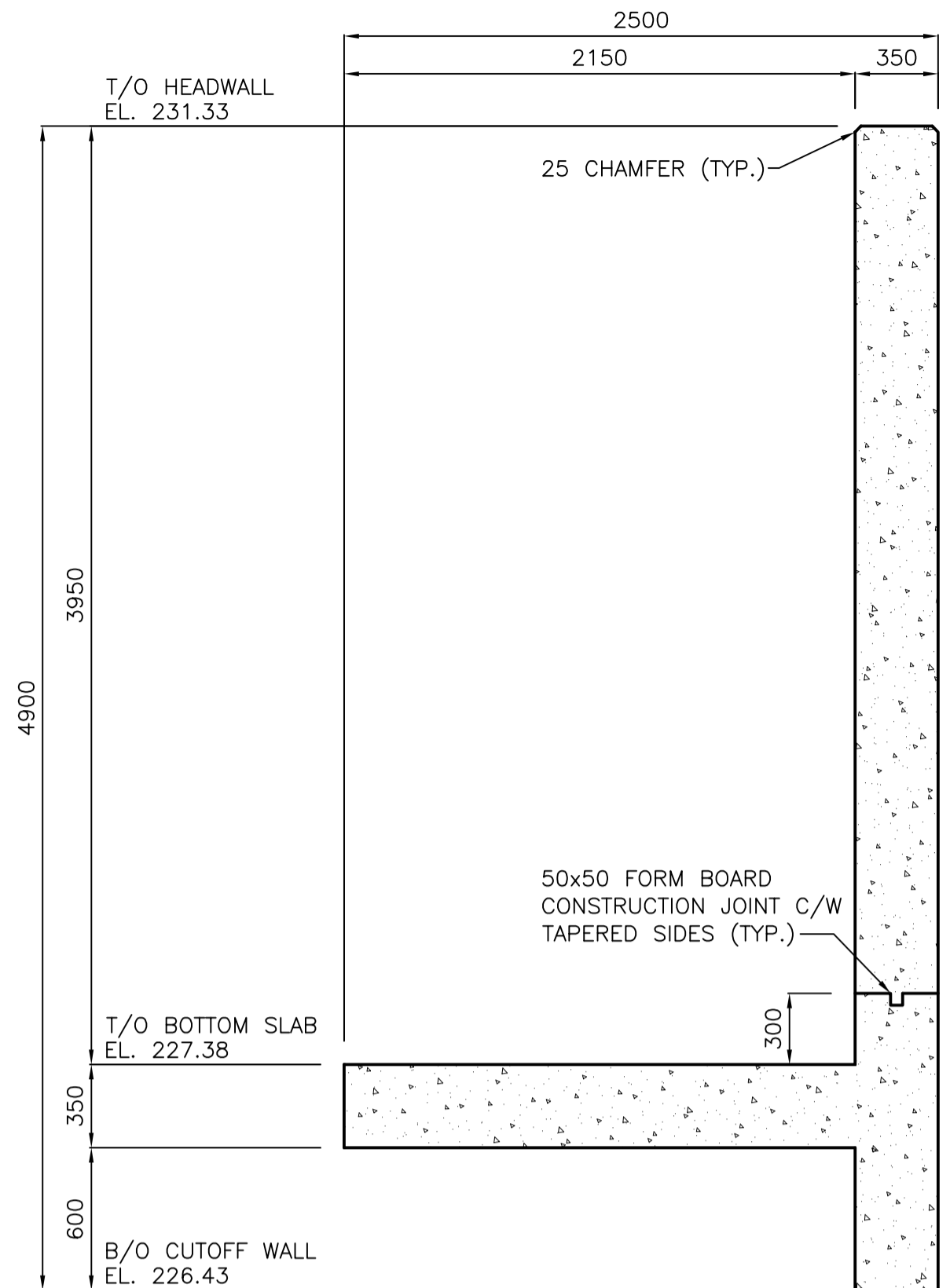
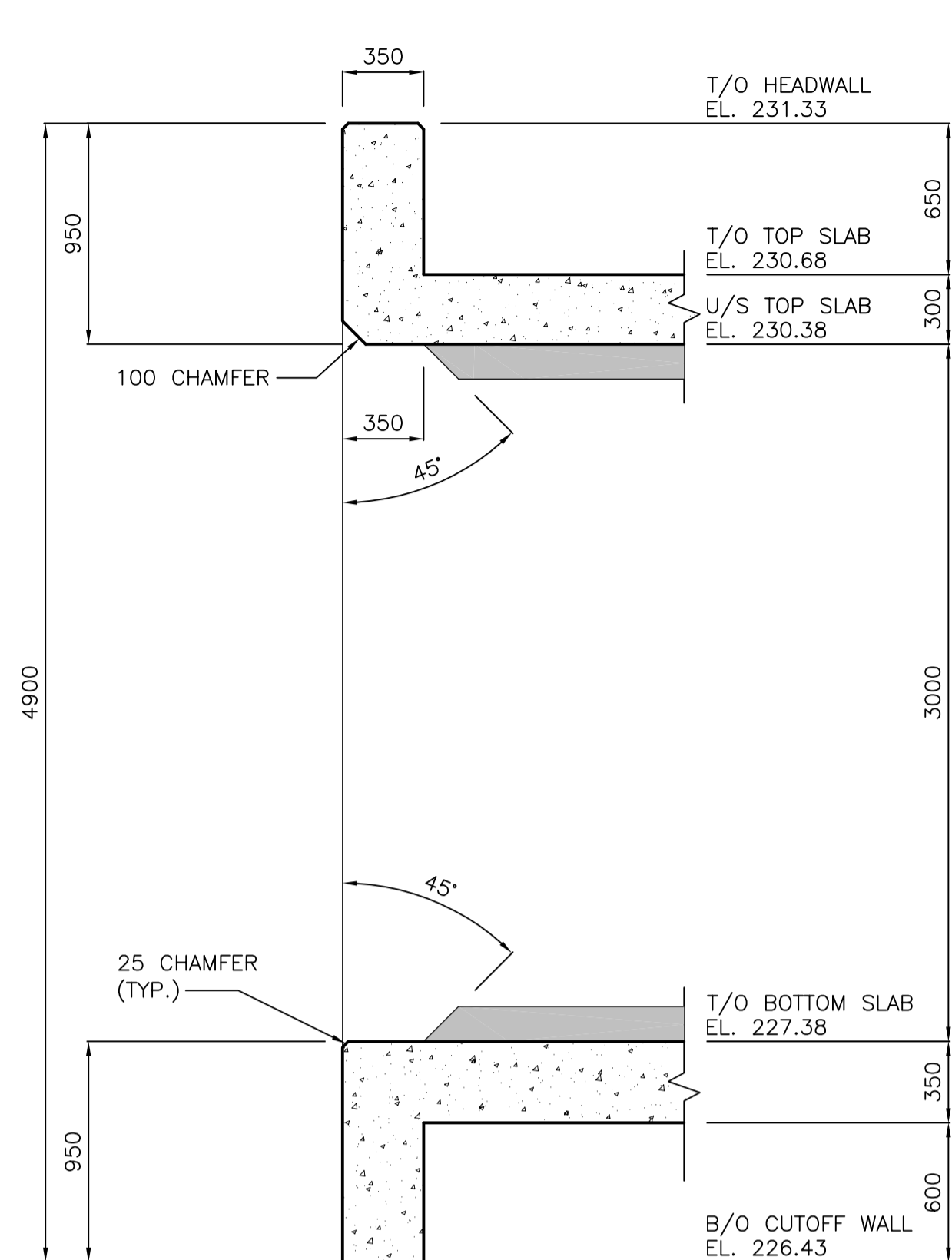


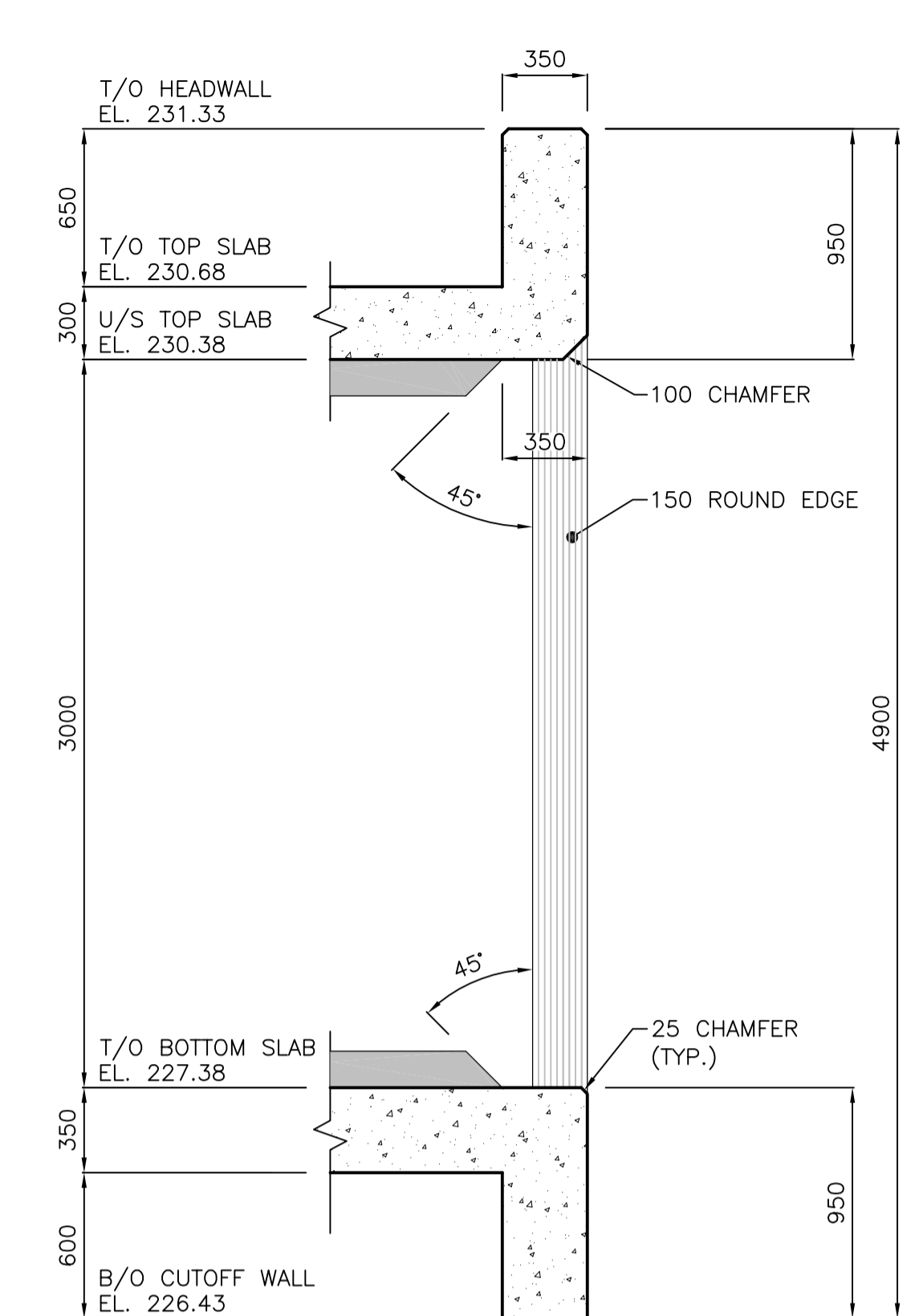
A TYP. SECTION
46 | 47



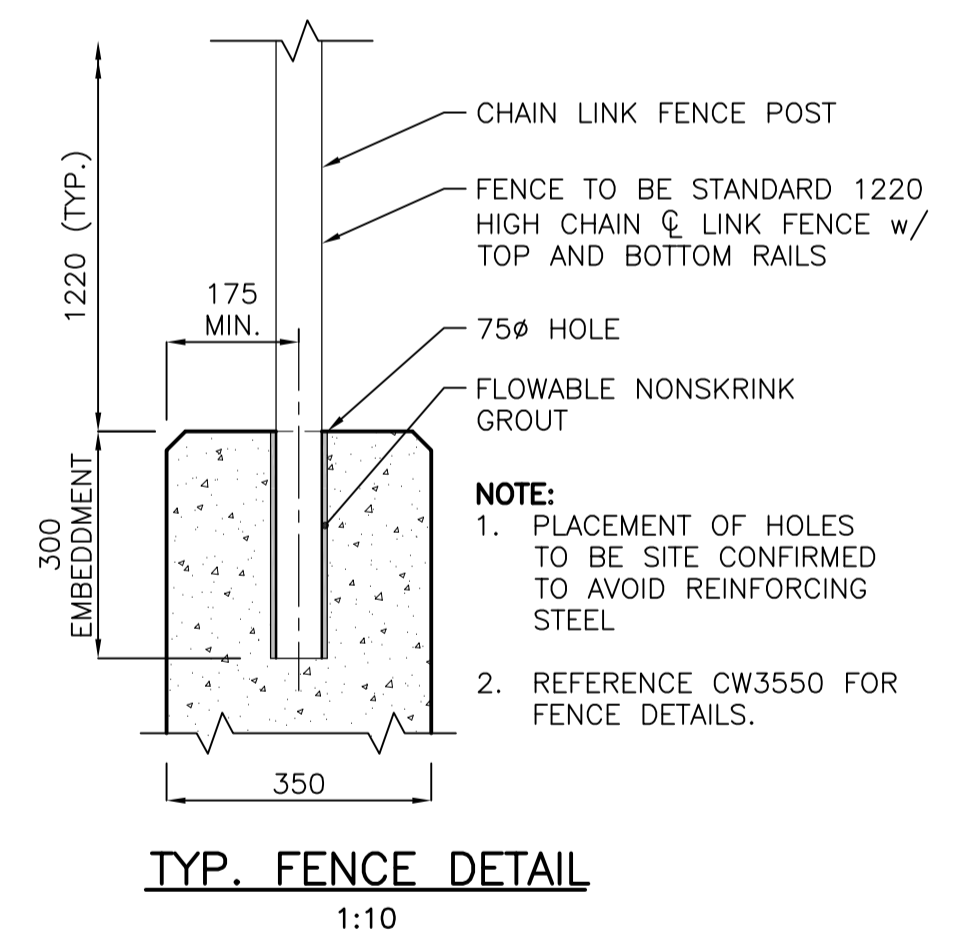
B TYP. HEADWALL SECTION
46 | 47



C SECTION
46 | 47



D SECTION
46 | 47



TYP. FENCE DETAIL
1:10

I:\1137\active\1137\0460\Drawings\02_Design\Sheet\Sheet_files\cubert_expanded\0460s-102-727.dwg
 Date: 2011 Jul 15 10:35am Login: Gail_Vign

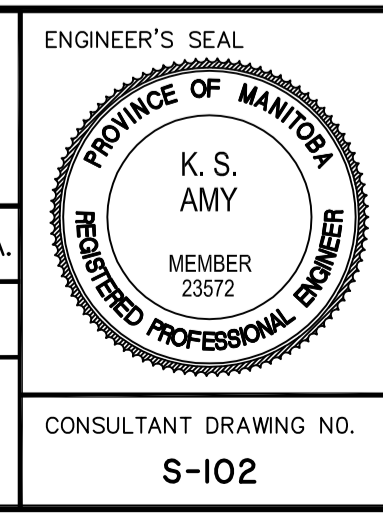


LOCATION APPROVED UNDERGROUND STRUCTURES			
SUPV. U/G STRUCTURES COMMITTEE	DATE		
NOTE: LOCATION OF UNDERGROUND STRUCTURES AS SHOWN ARE BASED ON THE BEST INFORMATION AVAILABLE BUT NO GUARANTEE IS GIVEN THAT ALL EXISTING UTILITIES ARE SHOWN OR THAT THE GIVEN LOCATIONS ARE EXACT. CONFIRMATION OF EXISTENCE AND EXACT LOCATION OF ALL SERVICES MUST BE OBTAINED FROM THE INDIVIDUAL UTILITIES BEFORE PROCEEDING WITH CONSTRUCTION.			
NO.	REVISIONS	DATE	BY
0	ISSUED FOR TENDER	11.07.15	K.S.A.

B.M. ELEV.			

Stantec Consulting Ltd.
905 Waverley Street, Winnipeg, Manitoba
Tel 204-489-5900 Fax 204-453-9012

DESIGNED BY: K.S.A.	CHECKED BY: V.M.M. / K.S.A.
DRAWN BY: J.M.B.	APPROVED BY: K.S.A.
HOR. SCALE: 1:25	RELEASED FOR CONSTRUCTION: _____
VERTICAL: U.N.O.	DATE: 09.12.11



THE CITY OF WINNIPEG
PUBLIC WORKS DEPARTMENT
ENGINEERING DIVISION

WWARP PART I
KENASTON BOULEVARD EXTENSION - N.B. LANES
NORTH TOWN ROAD TO BISHOP GRANDIN BOULEVARD
CONCRETE SECTIONS & DETAILS
CONCRETE CULVERT EXTENSION

SHEET 47 OF 65
CAD FILE DRAWING NUMBER 04840s-102-727.dwg
CITY DRAWING NUMBER C375-II-09