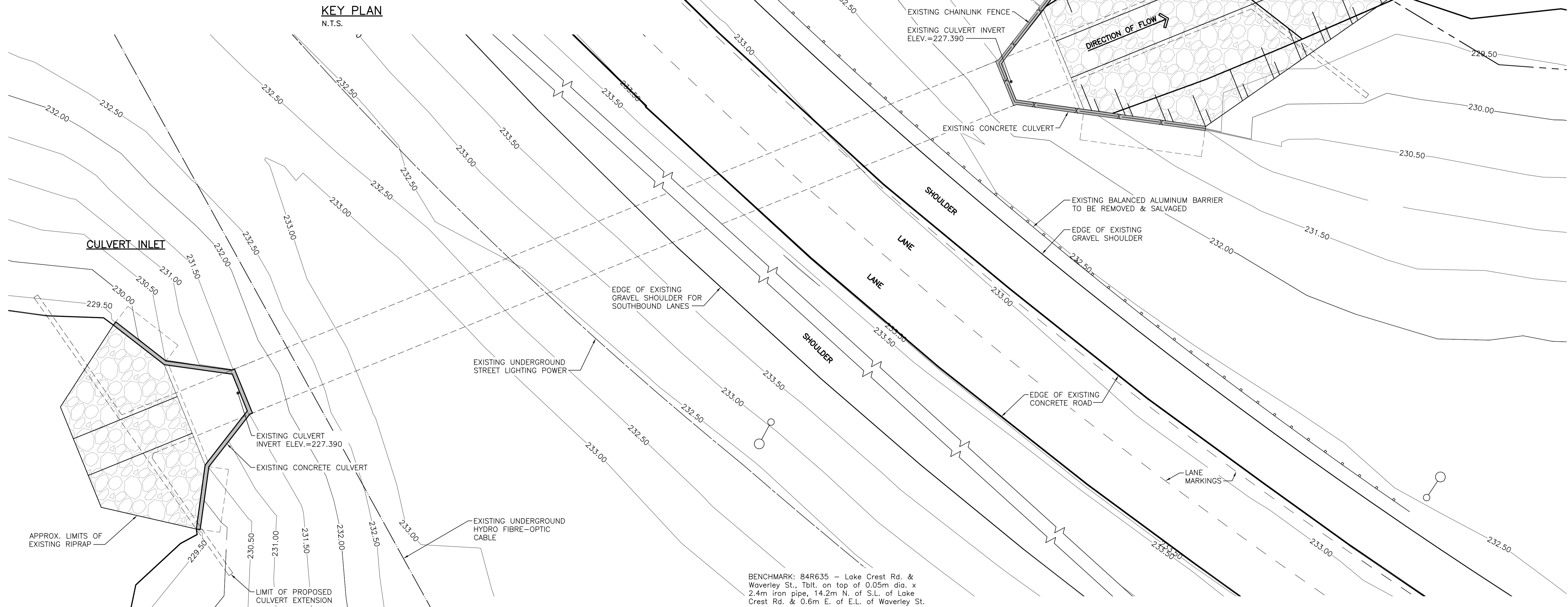


**LOT 16 DRAIN**



BENCHMARK: 84R635 - Lake Crest Rd. & Waverley St., Tblt. on top of 0.05m dia. x 2.4m iron pipe, 14.2m N. of S.L. of Lake Crest Rd. & 0.6m E. of E.L. of Waverley St.

V:\1137\Drawings\1137\04640\Drawings\04640\04640-101-727.dwg  
 Date: 2011 Jul 15 11:12am Login: GSA, TPA

**LOCATION APPROVED UNDERGROUND STRUCTURES**

SUPV. U/G STRUCTURES COMMITTEE	DATE

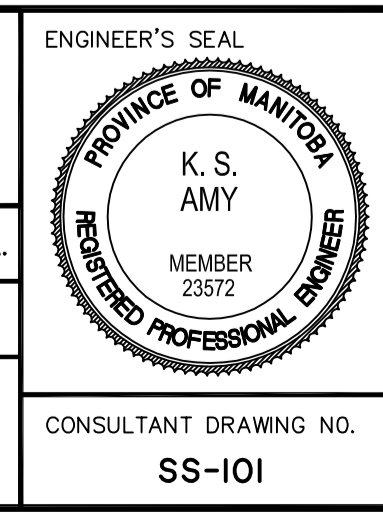
NOTE:  
 LOCATION OF UNDERGROUND STRUCTURES AS SHOWN ARE BASED ON THE BEST INFORMATION AVAILABLE BUT NO GUARANTEE IS GIVEN THAT ALL EXISTING UTILITIES ARE SHOWN OR THAT THE GIVEN LOCATIONS ARE EXACT. CONFIRMATION OF EXISTENCE AND EXACT LOCATION OF ALL SERVICES MUST BE OBTAINED FROM THE INDIVIDUAL UTILITIES BEFORE PROCEEDING WITH CONSTRUCTION.

B.M. 76-030 ELEV. 232.457m	DESIGNED BY: K.S.A.	CHECKED BY: B.J.W. / K.S.A.
	DRAWN BY: J.M.B.	APPROVED BY: K.S.A.
	HOR. SCALE: 1:150	RELEASED FOR CONSTRUCTION: DATE
	VERTICAL: DATE 09.12.11	
	NO. REVISIONS	

**Stantec Consulting Ltd.**  
 905 Waverley Street, Winnipeg, Manitoba  
 Tel 204-489-5900 Fax 204-453-9012

DESIGNED BY: K.S.A. CHECKED BY: B.J.W. / K.S.A.  
 DRAWN BY: J.M.B. APPROVED BY: K.S.A.

HOR. SCALE: 1:150  
 VERTICAL: DATE 09.12.11



**THE CITY OF WINNIPEG**  
 PUBLIC WORKS DEPARTMENT  
 ENGINEERING DIVISION

**WWARP PART I**  
 KENASTON BOULEVARD EXTENSION - N.B. LANES  
 NORTH TOWN ROAD TO BISHOP GRANDIN BOULEVARD  
 CONCRETE CULVERT EXTENSION  
 SITE PLAN - EXISTING

SHEET 39 OF 65  
 CAD FILE DRAWING NUMBER 04840ss-101-727.dwg  
 CITY DRAWING NUMBER C375-II-01

