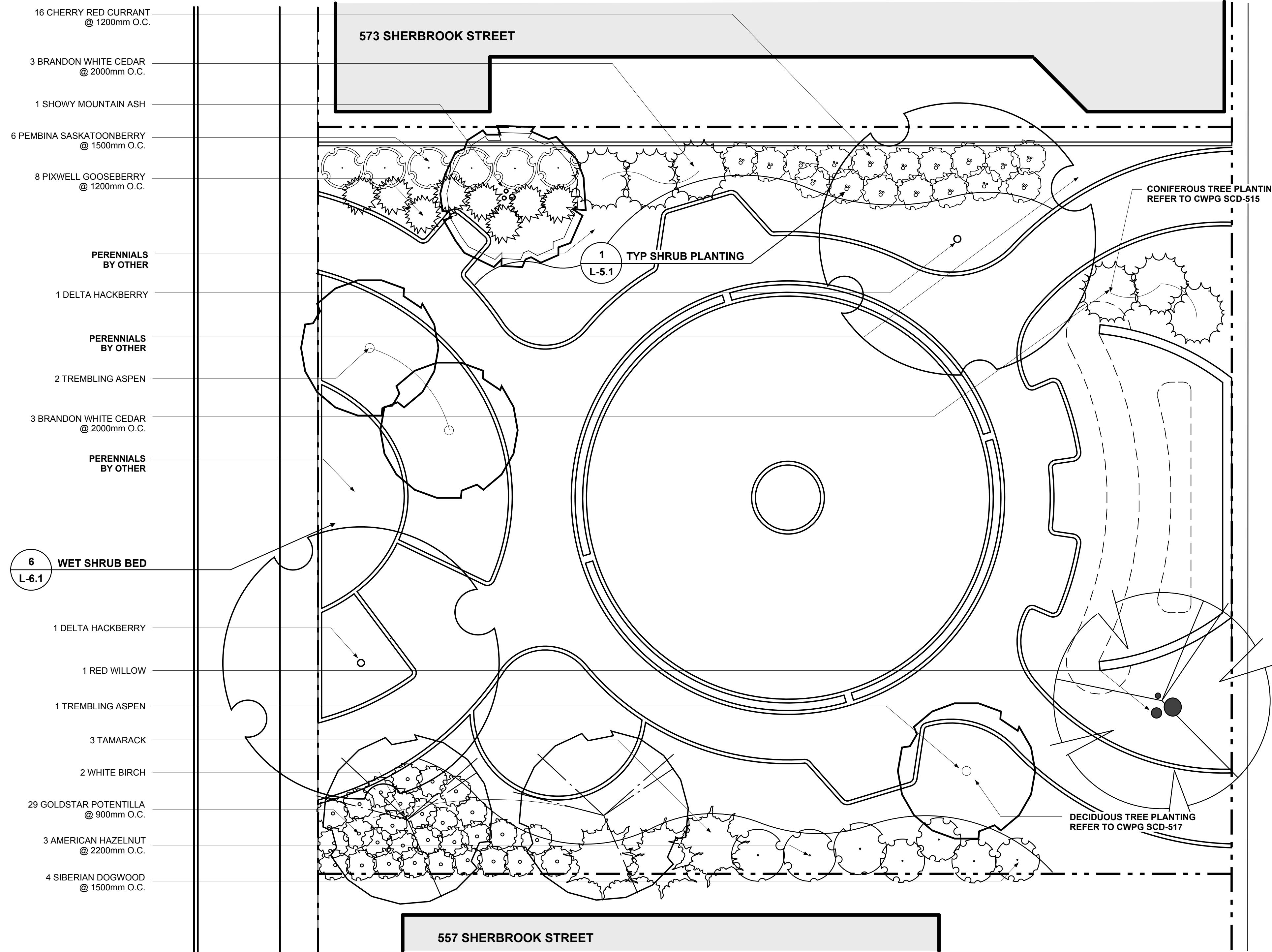


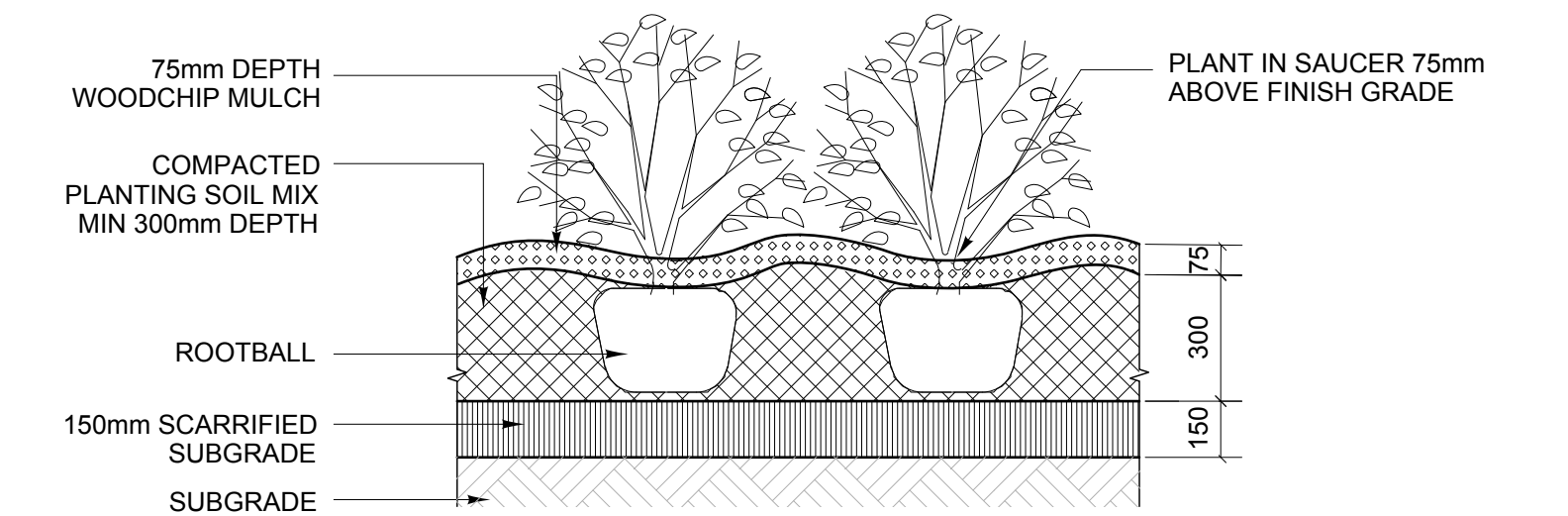
PLANTING NOTES:

1. ALL DIMENSIONS ARE IN MILLIMETRES UNLESS OTHERWISE SPECIFIED.
2. INSTALL SHRUB BEDS, SHRUBS, TREES, AND MULCH AS PER DETAILS 1/L-5.1 AND CWPG SCD-515 & 517.
3. REMOVE EXTRA MATERIALS AND LEAVE THE SITE IN A CLEAN, TIDY CONDITION AFTER EACH PLANTING AREA IS COMPLETED.
4. A ONE YEAR PLANT WARRANTY INSPECTION WILL BE CONDUCTED 12 MONTHS AFTER THE ISSUE OF THE CERTIFICATE OF SUBSTANTIAL PERFORMANCE. ALL PLANTS FOUND TO BE DEAD OR UNHEALTHY DUE TO PLANT STOCK QUALITY, EXCLUDING ACTS OF VANDALISM OR POOR MAINTENANCE, SHALL BE REPLACED AND WARRANTIED FOR AN ADDITIONAL YEAR.
5. ALL DAMAGE TO ADJACENT SOD AND PLANTINGS MUST BE REPAIRED BY THE CONTRACTOR PRIOR TO PROJECT COMPLETION.
6. REPORT ANY ON SITE DISCREPANCIES TO THE CONTRACT ADMINISTRATOR IMMEDIATELY.



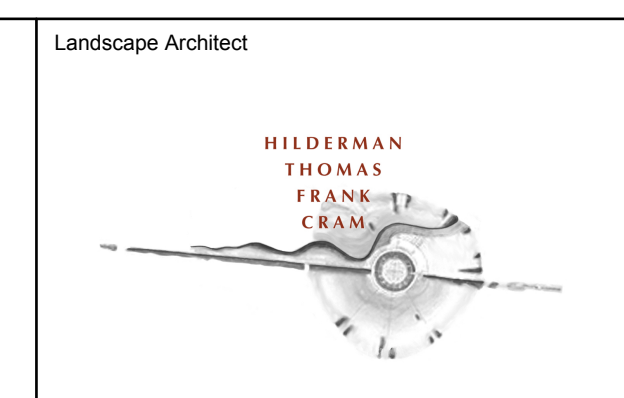
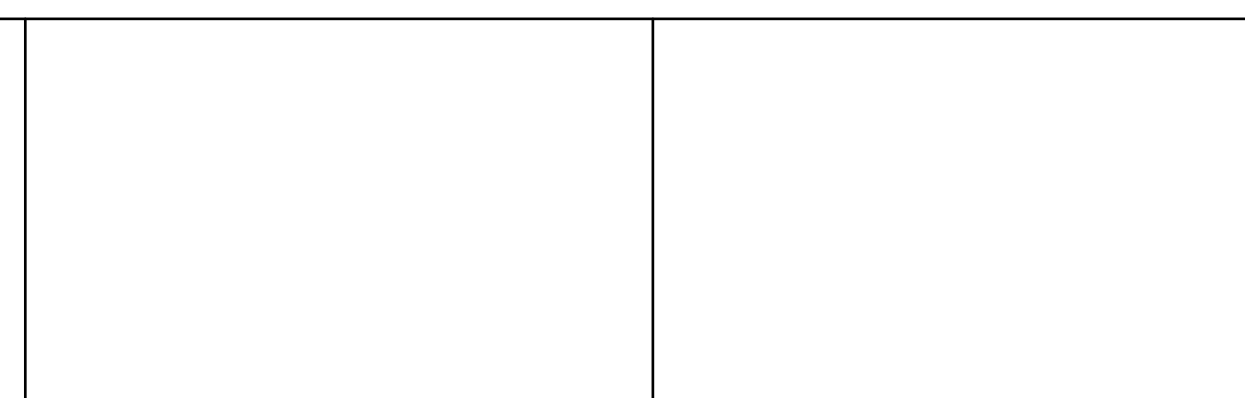
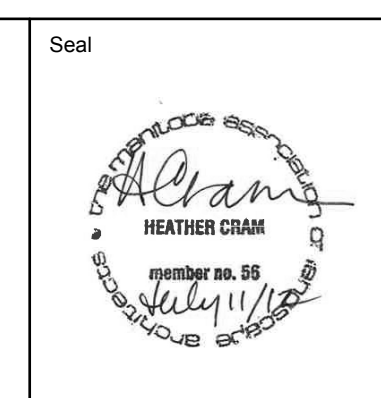
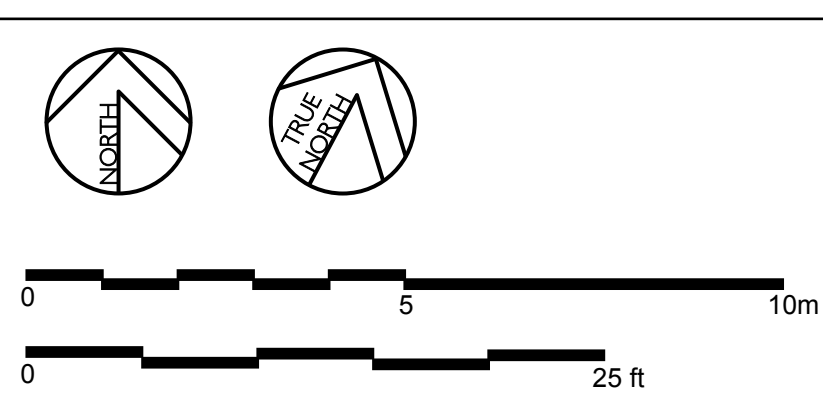
PLANT SPECIFICATION LIST

QTY	BOTANICAL/ COMMON NAME	SIZE/ REMARKS
Coniferous Trees		
3	Larix laricina/ Tamarack	2.4m ht. Evenly branched, full bushy trees, no broken leaders, well branched to grade. B & B or tree mover, wire basket. Guy wire.
6	Thuja occidentalis 'Brandon' / Brandon White Cedar	2.4m ht. Evenly branched, full bushy trees, no broken leaders, well branched to grade. B & B or tree mover, wire basket. Guy wire.
Deciduous Trees		
2	Betula papyrifera var. papyrifera / White Birch	Multi-stemmed, 50mm cal. 3.5 to 4.0 m ht., 10 major branches in well formed head, 1.75 m above grade B & B or tree mover, wire basket. Double stake.
2	Celtis occidentalis 'Delta' / Delta Hackberry	Multi-stemmed, 75mm cal. 4.5 to 5.0 m ht., 13 major branches in well formed head, 2.0 m above grade B & B or tree mover, wire basket. Double stake.
3	Populus tremuloides / Trembling Aspen	Multi-stemmed, 75mm cal. 4.5 to 5.0 m ht., 13 major branches in well formed head, 2.0 m above grade B & B or tree mover, wire basket. Double stake.
1	Salix laevigata / Red Willow	Multi-stemmed, 75mm cal. 4.5 to 5.0 m ht., 13 major branches in well formed head, 2.0 m above grade B & B or tree mover, wire basket. Double stake.
1	Sorbus decora / Showy Mountain Ash	Multi-stemmed, 75mm cal. 4.5 to 5.0 m ht., 13 major branches in well formed head, 2.0 m above grade B & B or tree mover, wire basket. Double stake.
Deciduous Shrubs		
6	Amelanchier alnifolia 'Pembina' / Pembina Saskatoon Berry	1 gal. pot. 500-600mm (20-24") ht. min. 5 major basal branches. Well formed, bushy plants. Container stock.
4	Cornus alba 'Sibirica' / Siberian Dogwood	3 gal. pot. 500-600mm (20-24") ht. min. 5 major basal branches. Well formed, bushy plants. Container stock.
3	Corylus americana / American Hazelnut	2 gal. pot. 300-400mm (12-15") ht. min. 4 major basal branches. Well formed, bushy plants. Container stock.
29	Potentilla fruticosa 'Goldstar' / Goldstar Potentilla	2 gal. pot. 300-400mm (12-15") ht. min. 4 major basal branches. Well formed, bushy plants. Container stock.
8	Ribes 'Pixwell' / Pixwell Gooseberry	1 gal. pot. 500-600mm (20-24") ht. min. 5 major basal branches. Well formed, bushy plants. Container stock.
17	Ribes rubrum 'Cherry Red' / Cherry Red Currant	1 gal. pot. 500-600mm (20-24") ht. min. 5 major basal branches. Well formed, bushy plants. Container stock.



1 TYP SHRUB PLANTING
L-5.1 SCALE: 1:20

No.	Date	Issue/Revision	By
4	2012-07-11	ISSUED FOR TENDER	SB
3	2012-04-16	99.5% CD	SB
2	2011-09-02	99% CD	SB
1	2011-03-14	66% CD	SB



The general contractor shall check & verify all dimensions and report any errors or omissions to the designers.

Project SPENCE NEIGHBORHOOD - ABORIGINAL SPIRIT PARK #561-569 SHERBROOK STREET WINNIPEG, MANITOBA						Sheet No.
Sheet Title PLANTING PLAN						L-5.1
Design HC/SB	Drawn SB	Checked HC	Scale 1:100	Date 07/11/12	File 10-043	