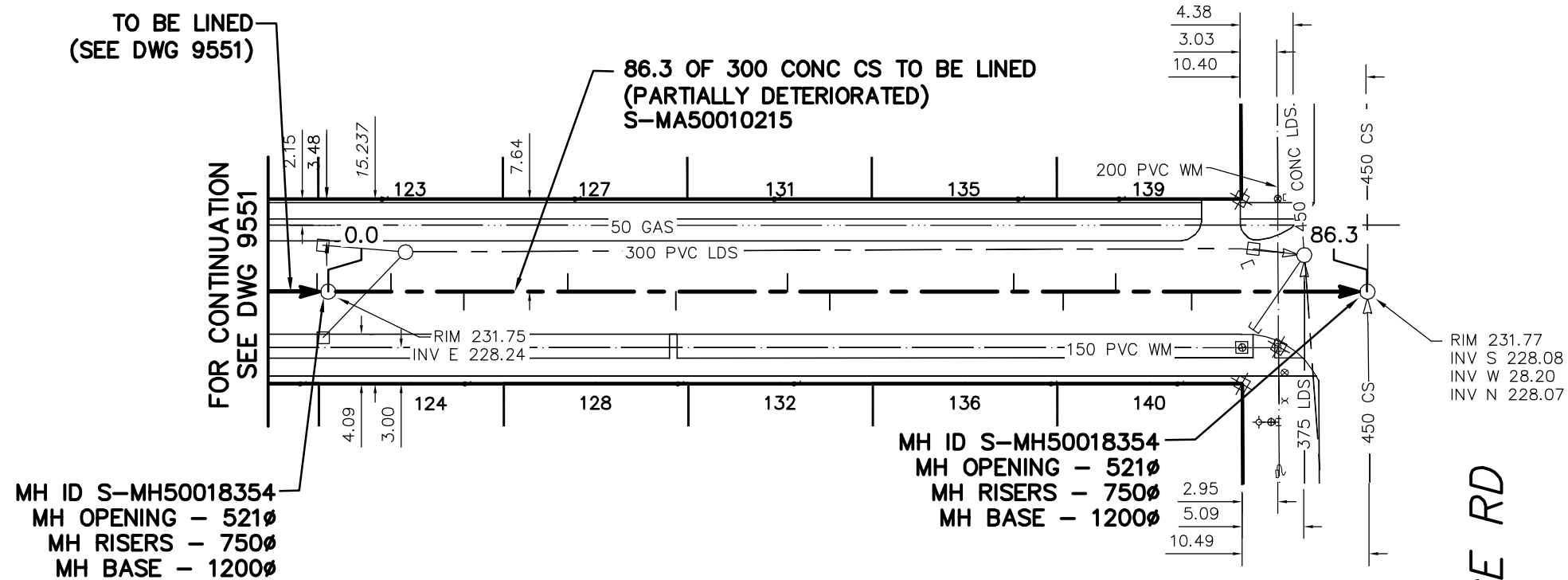


THORNDALE AVENUE



SEWER JUNCTION INFORMATION FROM SEWER VIDEO INSPECTION
SEWER ID S-MA50010215

DISTANCE FROM MH ID S-MH50018354				
5.2	N	150∅	WEST	CNI
11.2	N	150∅	EAST	CNI
19.8	N	150∅	WEST	CNI
28.7	N	150∅	EAST	CNI
37.9	N	150∅	WEST	CNI
41.4	N	150∅	EAST	CXI
56.6	N	150∅	WEST	JN
60.7	N	150∅	EAST	CNI
65.0	N	150∅	WEST	CNI
71.3	N	150∅	EAST	CNI

ENGINEER'S SEAL

ORIGINAL SIGNED BY
S.R.J. COURNOYER
 11-03-18

BID OPPORTUNITY No: 49-2011
 FILENAME : 9551_9552.dwg
 PLOT DATE : 2011 03 23

LEGEND:
 52.0 | MEASUREMENT TO REPAIR FROM REFERENCE MH SHOWN THUS... 0.0

METRIC
 WHOLE NUMBERS INDICATE MILLIMETRES
 DECIMALIZED NUMBERS INDICATE METRES

B.M. ELEV.	FIELD BOOK #:	CITY OF WINNIPEG WATER AND WASTE ENGINEERING DIVISION		THE CITY OF WINNIPEG WATER AND WASTE DEPARTMENT	
POSTED TO LBS		DESIGNED BY SC	CHECKED BY SC	2011 SEWER RENEWALS BY CIPP LINING, CONTRACT 14 THORNDALE AVENUE 1ST MH W OF ST GEORGE ROAD TO MH AT ST GEORGE ROAD	
		DRAWN BY RS	APPROVED BY KZ	SHEET 74 OF 85	
		HOR. SCALE 1:500	RELEASED FOR CONSTRUCTION KAS ZUREK	CITY DRAWING NUMBER 9552	
NO.	REVISIONS	DATE	BY	DATE 2011 03 18	DATE 11-03-22