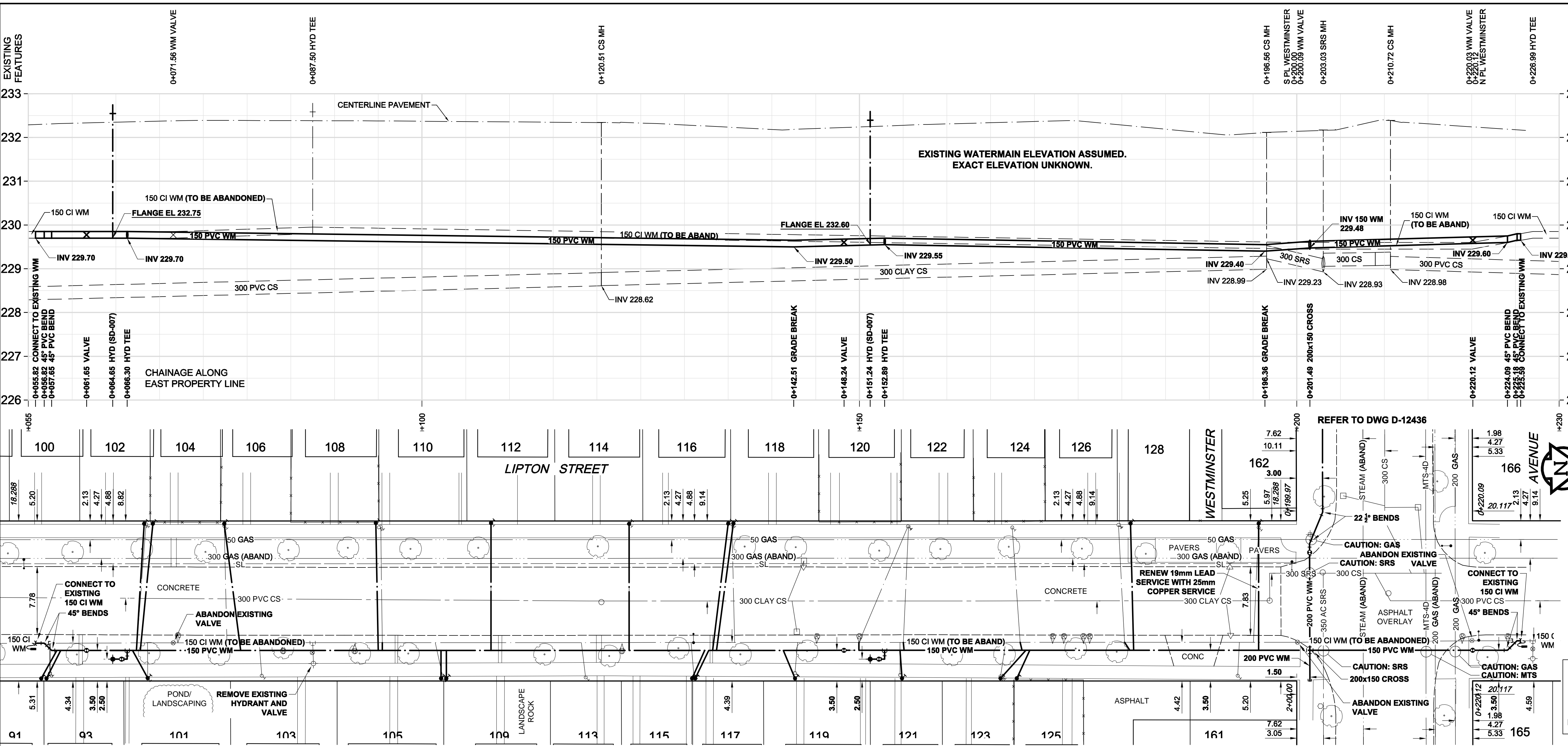


D SIZE 22" x 34" (559mm x 864mm)

PLOT: 11/05/26 11:40:17 AM

ACOM REVIEW DRFT CHK



- CONSTRUCTION NOTES:**
1. EXPOSE WATERMAIN CONNECTIONS AND CONFIRM INVERTS PRIOR TO CONSTRUCTION
 2. INSTALL WATERMAIN BY TRENCHLESS METHODS.
 3. ALL MATERIALS SHALL CONFORM TO THE CITY OF WINNIPEG STANDARD CONSTRUCTION SPECIFICATIONS.
 4. MINIMUM COVER TO TOP OF PROPOSED WATERMAIN SHALL BE 2.5m FROM STREET CENTERLINE.
 5. INSTALL ALL HYDRANTS WITH FLANGE ELEVATION 50mm TO 150mm ABOVE FINISHED GRADE.
 6. REPLACE ALL EXISTING LEAD SERVICES FROM THE PROPOSED WATERMAIN TO PROPERTY LINE.
 7. NOTIFY ALL AFFECTED RESIDENTS AND BUSINESSES 24 HOURS IN ADVANCE OF ANY WATER SHUTDOWN OR DISRUPTION OF SERVICE.
 8. LOCATION OF WATER SERVICES SHOWN ON DRAWINGS ARE APPROXIMATE. THE CONTRACTOR SHALL FIELD LOCATE ALL WATER SERVICES PRIOR TO CONSTRUCTION.
 9. BACKFILL UNDER OR WITHIN 1.0m OF PAVEMENTS, INCLUDING SIDEWALKS SHALL BE CLASS 3 BACKFILL EXCEPT AS NOTED. BACKFILL IN BOULEVARDS SHALL BE CLASS 5 BACKFILL.

ADDRESS	NATURE OF SERVICE	SIZE	MATERIAL	DISTANCE SC TO PROPERTY	POSITION OF SC (curb stop)			POSITION OF CC (corp)			COMMENTS:
					Long	Short	of	Long	Short	of	
91 LIPTON ST	RESIDENTIAL	5/8 in (16 mm)	LEAD	(0.3 m)	Long: (82.6 m) N	Short: OPP	of NL BASEMENT 93	Long: (82.6 m) N	Short: OPP	of S/C	RENEW TO PROPERTY
93 LIPTON ST	RESIDENTIAL	5/8 in (16 mm)	LEAD	(0.3 m)	Long: (82.6 m) N	Short: OPP	of NL BASEMENT	Long: (82.6 m) N	Short: OPP	of S/C	RENEW TO PROPERTY
98 & 100 LIPTON ST	RESIDENTIAL	5/8 in (16 mm)	LEAD	(0.3 m)	Long: (75.3 m) N	Short: (1.2 m) S	of NL HOUSE	Long: (75.3 m) N	Short: (1.2 m) S	of S/C	RENEW TO PROPERTY
101 LIPTON ST	RESIDENTIAL	1/2 in (13 mm)	LEAD	(0.3 m)	Long: (100.9 m) N	Short: (0.3 m) S	of NL HOUSE	Long: (100.9 m) N	Short: (0.3 m) S	of S/C	RENEW TO PROPERTY
102 LIPTON ST	RESIDENTIAL	3/4 in (19 mm)	COPPER	(0.5 m)	Long: (19.2 m) S	Short: (0.3 m) S	of 1ST HYDT N WOLSELEY HOUSE	Long: (19.2 m) S	Short: (0.3 m) S	of S/C #102	MAIN TAPPED OPPOSITE SIDE RENEW TO PROPERTY
103 LIPTON ST	RESIDENTIAL	3/4 in (19 mm)	COPPER	(0.5 m)	Long: (5.8 m) S	Short: (1.5 m) N	of 1ST HYDT S WESTMINSTER HOUSE	Long: (5.8 m) S	Short: (1.5 m) N	of S/C	RENEW TO PROPERTY
104 LIPTON ST	RESIDENTIAL	3/4 in (19 mm)	COPPER	(0.5 m)	Long: (18.9 m) S	Short: (1.2 m) S	of 1ST HYDT N WOLSELEY HOUSE	Long: (18.9 m) S	Short: (1.2 m) S	of S/C #102	MAIN TAPPED OPPOSITE SIDE RENEW TO PROPERTY
105 & 109 LIPTON ST	RESIDENTIAL	5/8 in (16 mm)	LEAD	(0.2 m)	Long: (96.6 m) S	Short: (0.9 m) N	of SL WESTMINSTER #105	Long: (96.6 m) S	Short: (0.9 m) N	of S/C	RENEW TO PROPERTY
106 LIPTON ST	RESIDENTIAL	1/2 in (13 mm)	LEAD	(0.3 m)	Long: (102.4 m) N	Short: (0.3 m) S	of NL WOLSELEY HOUSE	Long: (102.4 m) N	Short: (0.3 m) S	of S/C	RENEW TO PROPERTY
108 LIPTON ST	RESIDENTIAL	3/4 in (19 mm)	COPPER	(0.5 m)	Long: (7.6 m) N	Short: (0.3 m) S	of 1ST HYDT N WOLSELEY HOUSE	Long: (7.6 m) N	Short: (0.3 m) S	of S/C	MAIN TAPPED OPPOSITE SIDE RENEW TO PROPERTY
110 LIPTON ST	RESIDENTIAL	3/4 in (19 mm)	COPPER	(0.5 m)	Long: (7.9 m) N	Short: (1.5 m) S	of 1ST HYDT N WOLSELEY HOUSE	Long: (7.9 m) N	Short: (1.5 m) S	of S/C #110	RENEW TO PROPERTY
112 LIPTON ST	RESIDENTIAL	1/2 in (13 mm)	LEAD	(0.6 m)	Long: (82.0 m) N	Short: (2.1 m) N	of NL WESTMINSTER HOUSE	Long: (82.0 m) N	Short: (2.1 m) N	of S/C	RENEW TO PROPERTY
113 LIPTON ST	RESIDENTIAL	3/4 in (19 mm)	COPPER	(0.5 m)	Long: (3.2 m) S	Short: (3.2 m) S	of NL HOUSE	Long: (3.2 m) S	Short: (3.2 m) S	of S/C	RENEW TO PROPERTY
114 LIPTON ST	RESIDENTIAL	1/2 in (13 mm)	LEAD	(0.3 m)	Long: (75.9 m) S	Short: (0.6 m) S	of SL WESTMINSTER CELLAR	Long: (75.9 m) S	Short: (0.6 m) S	of S/C	RENEW TO PROPERTY

ADDRESS	NATURE OF SERVICE	SIZE	MATERIAL	DISTANCE SC TO PROPERTY	POSITION OF SC (curb stop)			POSITION OF CC (corp)			COMMENTS:
					Long	Short	of	Long	Short	of	
115 & 117 LIPTON ST	RESIDENTIAL	5/8 in (16 mm)	LEAD	(0.3 m)	Long: (69.2 m) S	Short: (64.6 m) S	of SL WESTMINSTER CENTER REET HOUSES	Long: (69.2 m) S	Short: (64.6 m) S	of S/C	RENEW TO PROPERTY
116 & 118 LIPTON ST	RESIDENTIAL	5/8 in (16 mm)	LEAD	(0.3 m)	Long: (1.5 m) N	Short: (1.5 m) N	of NL HOUSE	Long: (1.5 m) N	Short: (1.5 m) N	of S/C	RENEW TO PROPERTY
119 LIPTON ST	RESIDENTIAL	1/2 in (13 mm)	LEAD	(0.3 m)	Long: (57.9 m) S	Short: (1.2 m) S	of SL WESTMINSTER HOUSE	Long: (57.9 m) S	Short: (1.2 m) S	of S/C	RENEW TO PROPERTY
120 LIPTON ST	RESIDENTIAL	1/2 in (13 mm)	COPPER	(0.3 m)	Long: (44.8 m) S	Short: (3.0 m) S	of SL WESTMINSTER HOUSE	Long: (44.8 m) S	Short: (3.0 m) S	of S/C	RENEW TO PROPERTY
121 LIPTON ST	RESIDENTIAL	1/2 in (13 mm)	LEAD	(0.3 m)	Long: (45.1 m) S	Short: (0.3 m) N	of NL WESTMINSTER FRONT DOOR	Long: (45.1 m) S	Short: (0.3 m) N	of S/C	RENEW TO PROPERTY
122 LIPTON ST	RESIDENTIAL	3/4 in (19 mm)	COPPER	(0.3 m)	Long: (4.2 m) S	Short: (0.3 m) S	of NL WESTMINSTER HOUSE	Long: (4.2 m) S	Short: (0.3 m) S	of S/C	RENEW TO PROPERTY
123 & 125 LIPTON ST	RESIDENTIAL	5/8 in (16 mm)	LEAD	(0.3 m)	Long: (33.8 m) S	Short: (0.6 m) S	of SL WESTMINSTER BASEMENT #123	Long: (33.8 m) S	Short: (0.6 m) S	of S/C	RENEW TO PROPERTY
124 LIPTON ST	RESIDENTIAL	1/2 in (13 mm)	COPPER	(0.3 m)	Long: (32.9 m) S	Short: (3.5 m) N	of SL WESTMINSTER HOUSE	Long: (32.9 m) S	Short: (3.5 m) N	of S/C	RENEW TO PROPERTY
126 LIPTON ST	RESIDENTIAL	3/4 in (19 mm)	COPPER	(0.5 m)	Long: (20.7 m) S	Short: (1.2 m) N	of SL WESTMINSTER #126 LIPTON	Long: (20.7 m) S	Short: (1.2 m) N	of S/C #126	MAIN TAPPED OPPOSITE SIDE
128 LIPTON ST	RESIDENTIAL	3/4 in (19 mm)	COPPER	(0.5 m)	Long: (20.4 m) S	Short: (1.5 m) N	of SL WESTMINSTER HOUSE	Long: (20.4 m) S	Short: (1.5 m) N	of S/C #128	MAIN TAPPED OPPOSITE SIDE RENEW TO PROPERTY
161 LIPTON ST	RESIDENTIAL	3/4 in (19 mm)	COPPER	(4.4 m)	Long: (6.9 m) S	Short: (0.9 m) S	of SL WESTMINSTER CENTRE LARGE N DOOR	Long: (6.9 m) S	Short: (0.9 m) S	of S/C	RENEW TO PROPERTY WITH 25mm COPPER
162 LIPTON ST	RESIDENTIAL	3/4 in (19 mm)	LEAD	(0.8 m)	Long: (4.6 m) S	Short: (4.3 m) S	of SL WESTMINSTER BLDG	Long: (4.6 m) S	Short: (4.3 m) S	of S/C	RENEW TO PROPERTY WITH 25mm COPPER
166 & 168 LIPTON ST	RESIDENTIAL	3/4 in (19 mm)	LEAD	(0.3 m)	Long: (14.8 m) N	Short: (1.4 m) S	of SL WESTMINSTER HOUSE #168	Long: (14.8 m) N	Short: (1.4 m) S	of S/C	RENEW TO PROPERTY
165 LIPTON ST	RESIDENTIAL	3/4 in (19 mm)	COPPER	(0.5 m)	Long: (13.9 m) N	Short: (2.6 m) S	of NL WESTMINSTER #167	Long: (13.9 m) N	Short: (2.6 m) S	of S/C #165	RENEW TO PROPERTY

WARNING
 IF POWER EQUIPMENT OR EXPLOSIVES ARE TO BE USED FOR EXCAVATION ON THIS PROJECT, THE CONTRACTOR MUST: NOTIFY THE GAS COMPANY OF THE PROPOSED LOCATION OF EXCAVATION. TAKE PRECAUTION TO AVOID DAMAGE TO GAS COMPANY INSTALLATIONS. SEE REGIONAL REGULATION 140/92 FOR DETAILS

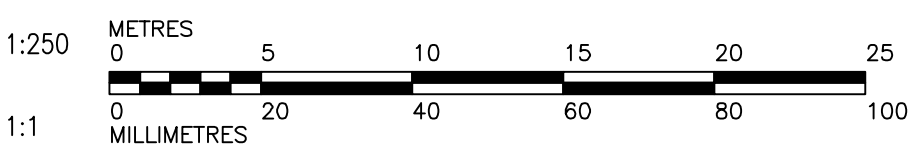
EXISTING	LEGEND - PLAN	NEW	EXISTING	LEGEND - PROFILE	NEW	EXISTING	LEGEND - PROFILE	NEW
150 WM	WATERMAIN	150 WM	WATERMAIN	150 WM	WATERMAIN	150 WM	WATERMAIN	150 WM
300 LBS	LAND DRAINAGE SEWER	300 LBS	LAND DRAINAGE SEWER	300 LBS	LAND DRAINAGE SEWER	300 LBS	LAND DRAINAGE SEWER	300 LBS
250 WWS	WASTE WATER SEWER	250 WWS	WASTE WATER SEWER	250 WWS	WASTE WATER SEWER	250 WWS	WASTE WATER SEWER	250 WWS
MANHOLE	MANHOLE	MANHOLE	MANHOLE	MANHOLE	MANHOLE	MANHOLE	MANHOLE	MANHOLE
CATCH BASIN	CATCH BASIN	CATCH BASIN	CATCH BASIN	CATCH BASIN	CATCH BASIN	CATCH BASIN	CATCH BASIN	CATCH BASIN
CURB INLET	CURB INLET	CURB INLET	CURB INLET	CURB INLET	CURB INLET	CURB INLET	CURB INLET	CURB INLET
CULVERT	CULVERT	CULVERT	CULVERT	CULVERT	CULVERT	CULVERT	CULVERT	CULVERT
PIPE ABANDONMENTS	PIPE ABANDONMENTS	PIPE ABANDONMENTS	PIPE ABANDONMENTS	PIPE ABANDONMENTS	PIPE ABANDONMENTS	PIPE ABANDONMENTS	PIPE ABANDONMENTS	PIPE ABANDONMENTS
SURVEY BAR	SURVEY BAR	SURVEY BAR	SURVEY BAR	SURVEY BAR	SURVEY BAR	SURVEY BAR	SURVEY BAR	SURVEY BAR

LOCATION APPROVED UNDERGROUND STRUCTURES
 SUPR. U/G STRUCTURES DATE COMMITTEE
 NOTE: LOCATION OF UNDERGROUND STRUCTURES AS SHOWN ARE BASED ON THE BEST INFORMATION AVAILABLE. BUT NO GUARANTEE IS GIVEN THAT ALL EXISTING UTILITIES ARE SHOWN OR THAT THE GIVEN LOCATIONS ARE EXACT. CONFIRMATION OF EXISTENCE AND EXACT LOCATION OF ALL SERVICES MUST BE OBTAINED FROM THE INDIVIDUAL UTILITIES BEFORE PROCEEDING WITH CONSTRUCTION.

NO.	REVISIONS	DATE	BY
0	ISSUED FOR TENDER	11/05/26	GL
A	ISSUED FOR REVIEW	11/05/19	JP

DESIGNED BY	CHECKED BY	APPROVED BY	RELEASED FOR CONSTRUCTION
GSK	FMI	CCM	KAS ZUREK
DATE	DATE	DATE	DATE
			2011/05/26

METRIC
 WHOLE NUMBERS INDICATE MILLIMETRES
 DECIMALIZED NUMBERS INDICATE METRES



THE CITY OF WINNIPEG WATER AND WASTE DEPARTMENT
2011 WATERMAIN RENEWALS CONTRACT 4
 LIPTON STREET
 143m SOUTH OF WESTMINSTER AVE TO NORTH SIDE WESTMINSTER AVE

SHEET 7 OF 7
 CITY DRAWING NUMBER D-12437
 REV 0

PROFESSIONAL'S SEAL
 ORIGINAL SIGNED BY K.W. FITCHETT
 MAY 26, 2011
 CONSULTANT DRAWING NO. 60188096-01-C-108-ROX.dwg

BID OPPORTUNITY NO. 451-2011