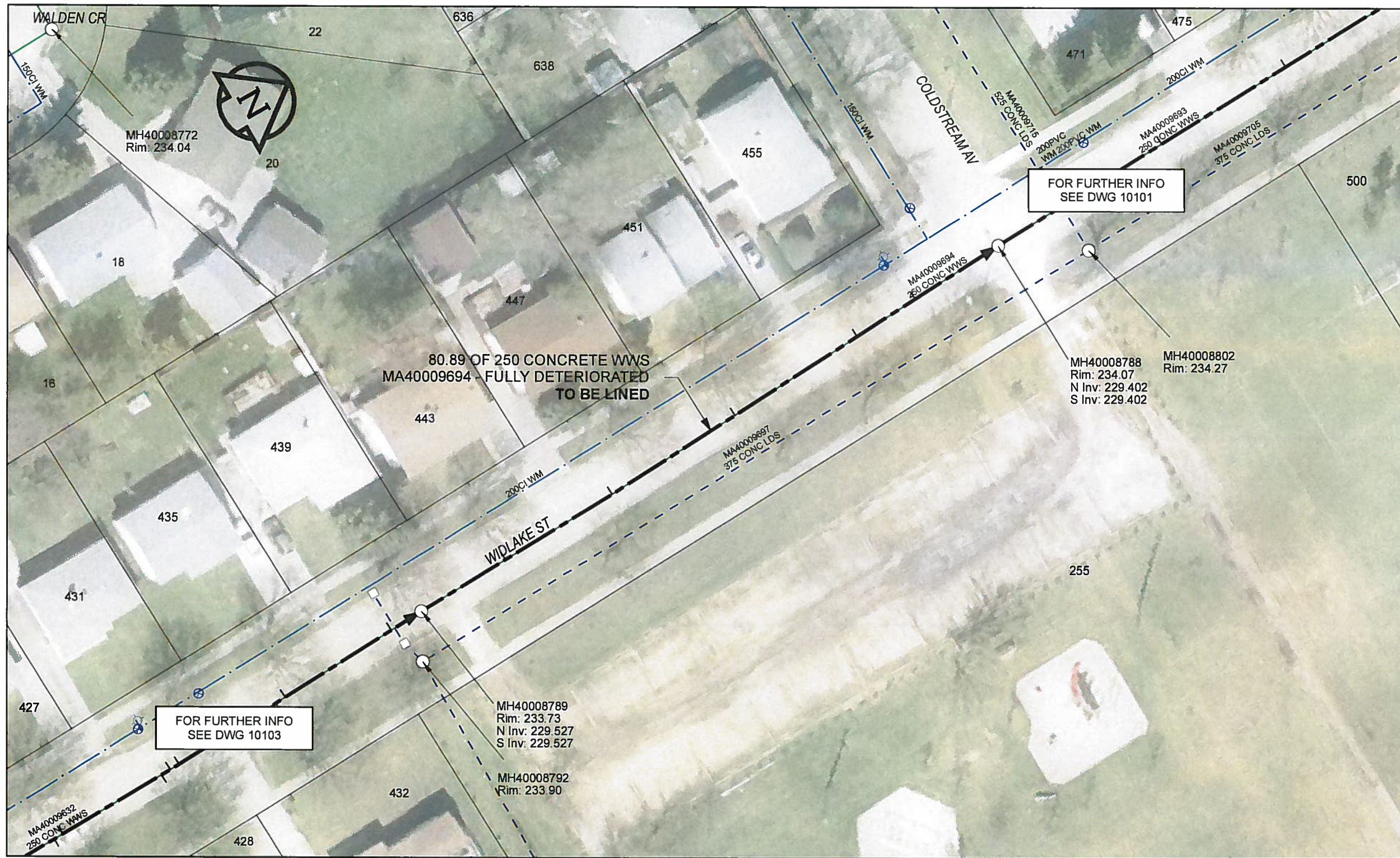


B SIZE 11" X 17" (279mm x 432mm)

FILE NAME: 60224031-01-C-107-R0X.PDF Saved By: JZ



SEWER JUNCTION INFORMATION

REF MH*	DIST FROM*	SIZE*	CLOCK AT*
MH40008789	11.70	150Ø	10
MH40008789	26.50	150Ø	10
MH40008789	43.80	150Ø	11
MH40008789	61.00	150Ø	10
MH40008789	69.20	150Ø	10

*JUNCTION INFORMATION FROM VIDEO INSPECTION

WARNING
 IF POWER EQUIPMENT OR EXPLOSIVES ARE TO BE USED FOR EXCAVATION ON THIS PROJECT, THE CONTRACTOR MUST:
 1) NOTIFY THE GAS COMPANY OF THE PROPOSED LOCATION OF EXCAVATION.
 2) TAKE PRECAUTION TO AVOID DAMAGE TO GAS COMPANY INSTALLATIONS.
 SEE PROVINCIAL REGULATION 140/92 FOR DETAILS

AECOM
 Certificate of Authorization
 AECOM Canada Ltd.
 No. 4671 Date: 12/02/12

METRIC
 WHOLE NUMBERS INDICATE MILLIMETRES
 DECIMALIZED NUMBERS INDICATE METRES

0 2.5 5 10 15 20
 Meters

BID OPPORTUNITY NO.1048-2011

AECOM REVIEW DRFT CHK

LOCATION APPROVED UNDERGROUND STRUCTURES
 Can-Net GPS Reference Station WINN/810

DATE: 12/02/21 BY: JZ

NOTE:
 LOCATION OF UNDERGROUND STRUCTURES AS SHOWN ARE BASED ON THE BEST INFORMATION AVAILABLE. BUT NO GUARANTEE IS GIVEN THAT ALL EXISTING UTILITIES ARE SHOWN OR THAT THE GIVEN LOCATIONS ARE EXACT. CONFIRMATION OF EXISTENCE AND EXACT LOCATION OF ALL SERVICES MUST BE OBTAINED FROM THE INDIVIDUAL UTILITIES BEFORE PROCEEDING WITH CONSTRUCTION.

NO.	REVISIONS	YY/MM/DD	BY
0	ISSUED FOR CONSTRUCTION	12/02/21	JZ

AECOM

DESIGNED BY	ALD	CHECKED BY	PC
DRAWN BY	JZ	APPROVED BY	Byron Leblond
HOR. SCALE	1:500	RELEASED FOR CONSTRUCTION	
VERT. SCALE	N/A	DATE	12/02/12

PROFESSIONAL'S SEAL

PROVINCE OF MANITOBA
 K. FITCHETT
 REGISTERED ENGINEER
 CONSULTANT DRAWING NO. 60224031-01-C-107-R0X.mxd

THE CITY OF WINNIPEG WATER AND WASTE DEPARTMENT

2011 WASTE WATER SEWER RENEWALS
 BY CIPP LINING
 CONTRACT 20
 WIDLAKE ST
 80.8m S OF COLDSTREAM AV TO COLDSTREAM AV

SHEET 107 OF 112
 CITY DRAWING NUMBER 10102 REV 0