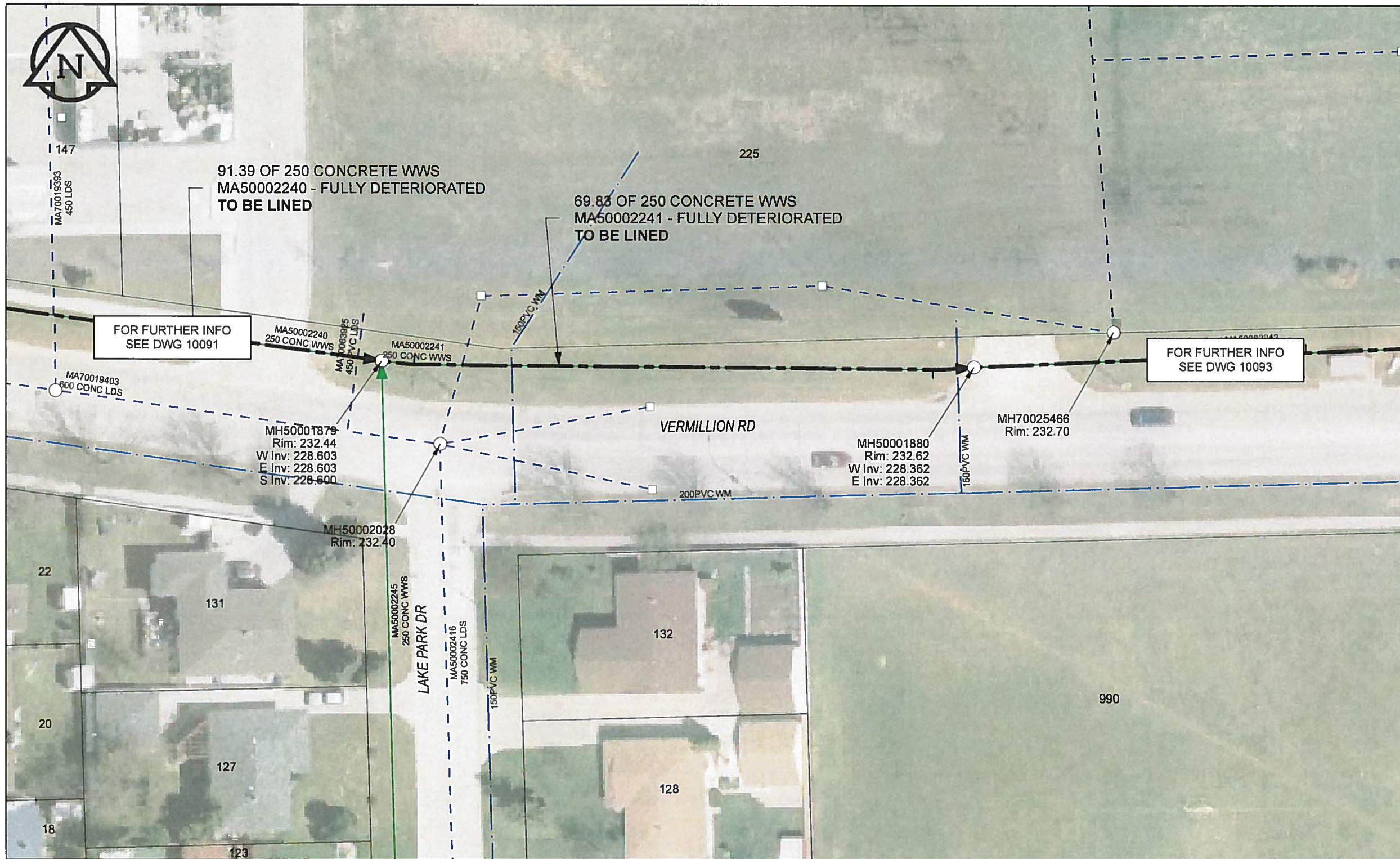


B SIZE 11" X 17" (279mm x 432mm)



SEWER JUNCTION INFORMATION

REF MH*	DIST FROM*	REF MH	SIZE*	CLOCK AT*
MH50001879	3.90		200Ø	11
MH50001879	65.00		050Ø	01

*JUNCTION INFORMATION FROM VIDEO INSPECTION

WARNING
 IF POWER EQUIPMENT OR EXPLOSIVES ARE TO BE USED FOR EXCAVATION ON THIS PROJECT, THE CONTRACTOR MUST:
 1) NOTIFY THE GAS COMPANY OF THE PROPOSED LOCATION OF EXCAVATION.
 2) TAKE PRECAUTION TO AVOID DAMAGE TO GAS COMPANY INSTALLATIONS.
 SEE PROVINCIAL REGULATION 140/92 FOR DETAILS

APEGM
 Certificate of Authorization
 AECOM Canada Ltd.
 No. 4671 Date: 12/02/16

METRIC
 WHOLE NUMBERS INDICATE MILLIMETRES
 DECIMALIZED NUMBERS INDICATE METRES

0 2.5 5 10 15 20
 Meters

BID OPPORTUNITY NO.1048-2011

AECOM REVIEW DRFT CHK
 FILE NAME: 60224031-01-C-097-ROX.PDF Saved By: JZ

LOCATION APPROVED UNDERGROUND STRUCTURES

SUPR. U/G STRUCTURES DATE COMMITTEE
 NOTE:
 LOCATION OF UNDERGROUND STRUCTURES AS SHOWN ARE BASED ON THE BEST INFORMATION AVAILABLE. BUT NO GUARANTEE IS GIVEN THAT ALL EXISTING UTILITIES ARE SHOWN OR THAT THE GIVEN LOCATIONS ARE EXACT. CONFIRMATION OF EXISTENCE AND EXACT LOCATION OF ALL SERVICES MUST BE OBTAINED FROM THE INDIVIDUAL UTILITIES BEFORE PROCEEDING WITH CONSTRUCTION.

Can-Net GPS Reference Station WINN/810

NO.	ISSUED FOR CONSTRUCTION	YY/MM/DD	BY
0	ISSUED FOR CONSTRUCTION	12/02/21	JZ



DESIGNED BY	ALD	CHECKED BY	PC
DRAWN BY	JZ	APPROVED BY	<i>[Signature]</i>
HOR. SCALE	1:500	RELEASED FOR CONSTRUCTION	
VERT. SCALE	N/A		
DATE	12/02/16	DATE	02/17/17

PROFESSIONAL'S SEAL
 PROVINCE OF MANITOBA
 K. FITCHETT
 REGISTERED ENGINEER
 CONSULTANT DRAWING NO. 60224031-01-C-097-ROX.mxd

THE CITY OF WINNIPEG WATER AND WASTE DEPARTMENT

2011 WASTE WATER SEWER RENEWALS BY CIPP LINING CONTRACT 20 VERMILLION RD LAKE PARK DR TO 69.9m E OF LAKE PARK DR

SHEET	97 OF 112
CITY DRAWING NUMBER	10092 REV 0