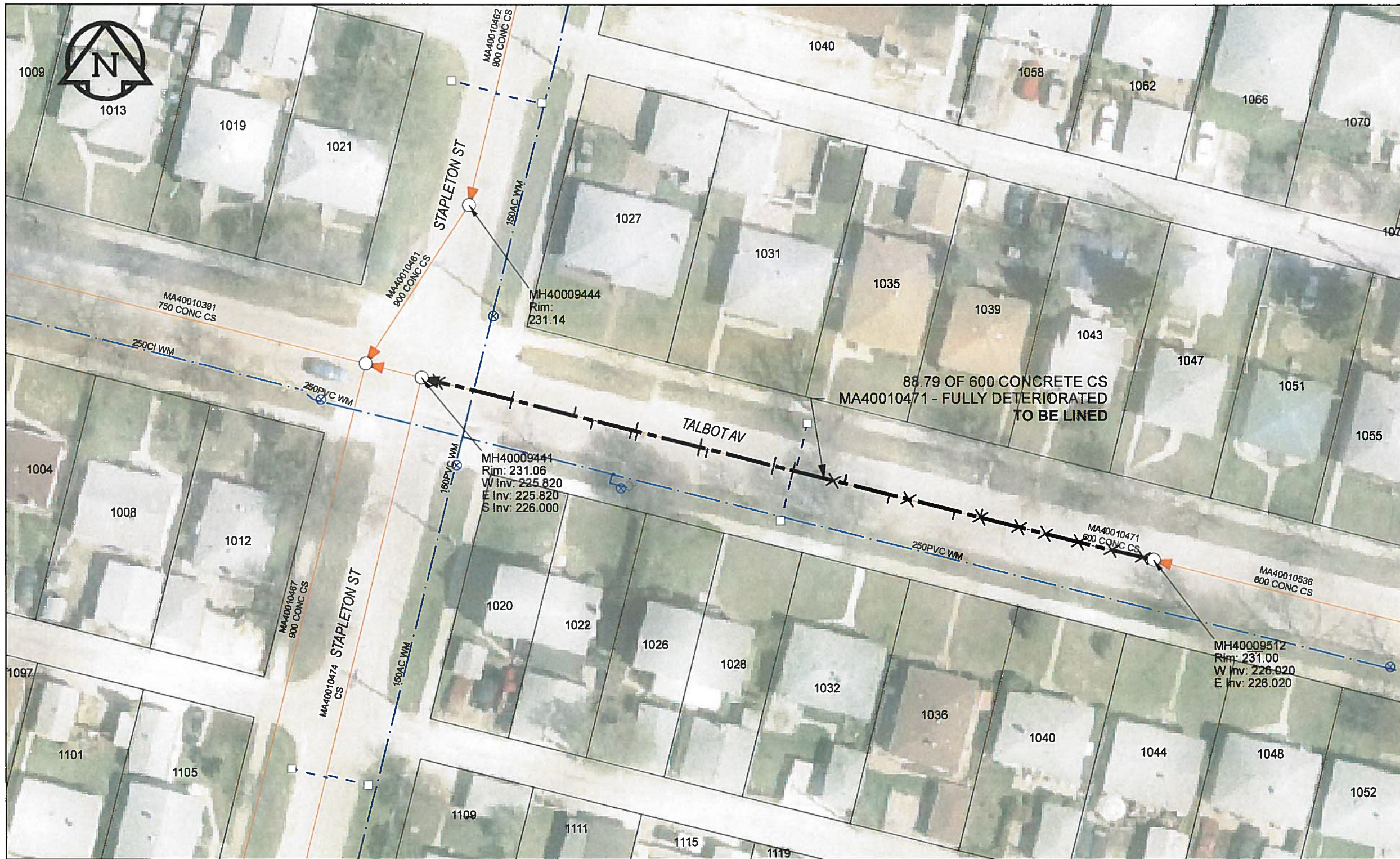


B SIZE 11" X 17" (279mm x 432mm)

FILE NAME: 60224031-01-C-093-ROX.PDF Saved By: JZ



**SEWER JUNCTION INFORMATION**

| REF MH*    | DIST FROM* | REF MH | SIZE* | CLOCK AT* |
|------------|------------|--------|-------|-----------|
| MH40009512 | 1.30       |        | 150Ø  | 12        |
| MH40009512 | 5.10       |        | 150Ø  | 12        |
| MH40009512 | 9.10       |        | 150Ø  | 12        |
| MH40009512 | 13.10      |        | 150Ø  | 12        |
| MH40009512 | 16.30      |        | 150Ø  | 12        |
| MH40009512 | 21.00      |        | 150Ø  | 01        |
| MH40009512 | 21.00      |        | 100Ø  | 12        |
| MH40009512 | 24.10      |        | 150Ø  | 11        |
| MH40009512 | 29.70      |        | 150Ø  | 12        |
| MH40009512 | 32.00      |        | 150Ø  | 11        |
| MH40009512 | 37.40      |        | 150Ø  | 01        |
| MH40009512 | 37.50      |        | 150Ø  | 01        |
| MH40009512 | 38.80      |        | 150Ø  | 12        |
| MH40009512 | 43.70      |        | 150Ø  | 11        |
| MH40009512 | 43.70      |        | 150Ø  | 01        |
| MH40009512 | 46.10      |        | 150Ø  | 11        |
| MH40009512 | 46.10      |        | 150Ø  | 01        |
| MH40009512 | 54.10      |        | 150Ø  | 11        |
| MH40009512 | 55.00      |        | 150Ø  | 11        |
| MH40009512 | 55.00      |        | 150Ø  | 01        |
| MH40009512 | 62.60      |        | 150Ø  | 11        |
| MH40009512 | 62.80      |        | 150Ø  | 01        |
| MH40009512 | 63.30      |        | 150Ø  | 11        |
| MH40009512 | 68.00      |        | 150Ø  | 11        |
| MH40009512 | 70.30      |        | 150Ø  | 01        |
| MH40009512 | 77.80      |        | 150Ø  | 01        |
| MH40009512 | 77.80      |        | 150Ø  | 11        |
| MH40009512 | 86.80      |        | 100Ø  | 12        |

\*JUNCTION INFORMATION FROM VIDEO INSPECTION

**WARNING**  
 IF POWER EQUIPMENT OR EXPLOSIVES ARE TO BE USED FOR EXCAVATION ON THIS PROJECT, THE CONTRACTOR MUST:  
 1) NOTIFY THE GAS COMPANY OF THE PROPOSED LOCATION OF EXCAVATION.  
 2) TAKE PRECAUTION TO AVOID DAMAGE TO GAS COMPANY INSTALLATIONS.  
 SEE PROVINCIAL REGULATION 140/92 FOR DETAILS

**APEGM**  
 Certificate of Authorization  
 AECOM Canada Ltd.  
 No. 4671 Date: 12/02/16

**METRIC**  
 WHOLE NUMBERS INDICATE MILLIMETRES  
 DECIMALIZED NUMBERS INDICATE METRES

0 2.5 5 10 15 20  
 Meters

BID OPPORTUNITY NO.1048-2011

AECOM REVIEW DRFT CHK

**LOCATION APPROVED UNDERGROUND STRUCTURES**

SUPR. U/G STRUCTURES DATE COMMITTEE

**NOTE:**  
 LOCATION OF UNDERGROUND STRUCTURES AS SHOWN ARE BASED ON THE BEST INFORMATION AVAILABLE. BUT NO GUARANTEE IS GIVEN THAT ALL EXISTING UTILITIES ARE SHOWN OR THAT THE GIVEN LOCATIONS ARE EXACT. CONFIRMATION OF EXISTENCE AND EXACT LOCATION OF ALL SERVICES MUST BE OBTAINED FROM THE INDIVIDUAL UTILITIES BEFORE PROCEEDING WITH CONSTRUCTION.

Can-Net GPS Reference Station WINN/810

| NO. | ISSUED FOR CONSTRUCTION | YY/MM/DD | BY |
|-----|-------------------------|----------|----|
| 0   | ISSUED FOR CONSTRUCTION | 12/02/21 | JZ |

**AECOM**

|             |          |                           |                    |
|-------------|----------|---------------------------|--------------------|
| DESIGNED BY | ALD      | CHECKED BY                | <i>RL</i>          |
| DRAWN BY    | JZ       | APPROVED BY               | <i>Bygonlelehu</i> |
| HOR. SCALE  | 1:500    | RELEASED FOR CONSTRUCTION |                    |
| VERT. SCALE | N/A      |                           |                    |
| DATE        | 12/02/16 | DATE                      | 2/17/16            |

PROFESSIONAL'S SEAL

PROVINCE OF MANITOBA  
*Rw*  
 K. FITCHETT  
 REGISTERED ENGINEER

CONSULTANT DRAWING NO.  
 60224031-01-C-093-ROX.mxd

**THE CITY OF WINNIPEG WATER AND WASTE DEPARTMENT**

2011 WASTE WATER SEWER RENEWALS  
 BY CIPP LINING  
 CONTRACT 20  
 TALBOT AV  
 88.8m E OF STAPLETON ST TO STAPLETON ST

SHEET 93 OF 112  
 CITY DRAWING NUMBER  
**10088** REV 0