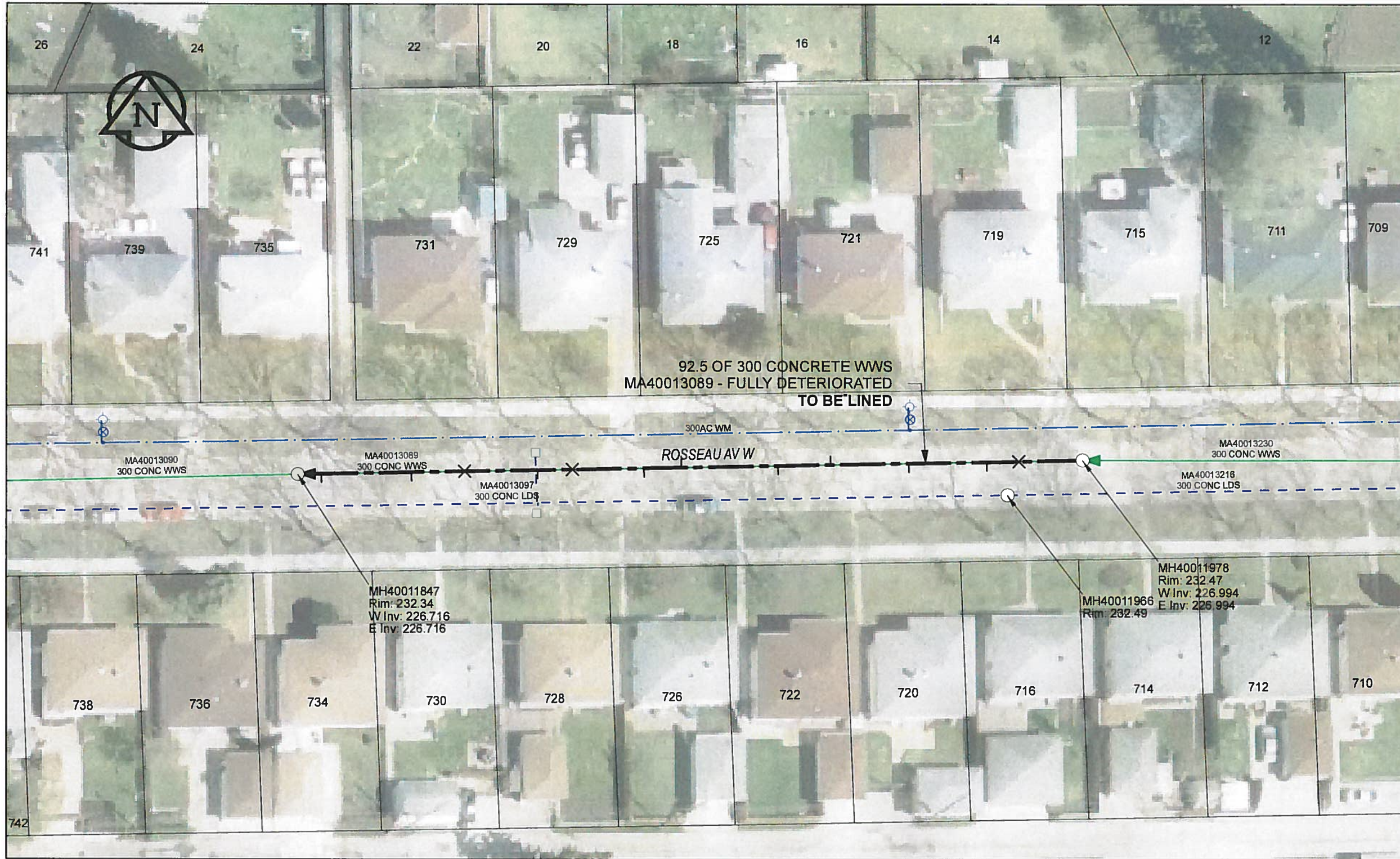


B SIZE 11" X 17" (279mm x 432mm)

FILE NAME: 60224031-01-C-089-R0X.PDF Saved By: JZ



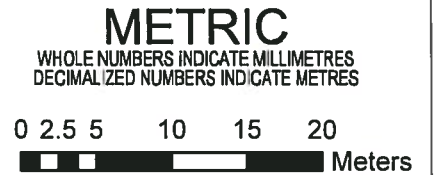
SEWER JUNCTION INFORMATION

REF MH*	DIST FROM* REF MH	SIZE*	CLOCK AT*
MH40011978	7.50	150Ø	12
MH40011978	11.30	150Ø	10
MH40011978	20.50	150Ø	11
MH40011978	29.70	150Ø	01
MH40011978	35.90	150Ø	10
MH40011978	47.30	150Ø	01
MH40011978	51.70	150Ø	10
MH40011978	60.10	150Ø	12
MH40011978	64.20	150Ø	10
MH40011978	72.80	150Ø	12
MH40011978	79.10	150Ø	10
MH40011978	89.70	150Ø	10

*JUNCTION INFORMATION FROM VIDEO INSPECTION

WARNING
 IF POWER EQUIPMENT OR EXPLOSIVES ARE TO BE USED FOR EXCAVATION ON THIS PROJECT, THE CONTRACTOR MUST
 1) NOTIFY THE GAS COMPANY OF THE PROPOSED LOCATION OF EXCAVATION
 2) TAKE PRECAUTION TO AVOID DAMAGE TO GAS COMPANY INSTALLATIONS
 SEE PROVINCIAL REGULATION 140/92 FOR DETAILS

APEGM
 Certificate of Authorization
 AECOM Canada Ltd.
 No. 4671 Date: 12/02/12



BID OPPORTUNITY NO.1048-2011

LOCATION APPROVED UNDERGROUND STRUCTURES

SUPR. U/G STRUCTURES COMMITTEE DATE
 NOTE:
 LOCATION OF UNDERGROUND STRUCTURES AS SHOWN ARE BASED ON THE BEST INFORMATION AVAILABLE. BUT NO GUARANTEE IS GIVEN THAT ALL EXISTING UTILITIES ARE SHOWN OR THAT THE GIVEN LOCATIONS ARE EXACT. CONFIRMATION OF EXISTENCE AND EXACT LOCATION OF ALL SERVICES MUST BE OBTAINED FROM THE INDIVIDUAL UTILITIES BEFORE PROCEEDING WITH CONSTRUCTION.

Can-Net GPS Reference Station WINN/810

NO.	REVISIONS	YY/MM/DD	BY
0	ISSUED FOR CONSTRUCTION	12/02/21	JZ

AECOM

DESIGNED BY	ALD	CHECKED BY	PL
DRAWN BY	JZ	APPROVED BY	<i>Byron Lelebe</i>
HOR. SCALE	1:500	RELEASED FOR CONSTRUCTION	<i>[Signature]</i>
VERT. SCALE	N/A	DATE	12/02/12

PROFESSIONAL'S SEAL
 PROVINCE OF MANITOBA
[Signature]
 K. FITCHETT
 REGISTERED ENGINEER
 CONSULTANT DRAWING NO. 60224031-01-C-089-R0X.mxd

THE CITY OF WINNIPEG
 WATER AND WASTE DEPARTMENT

2011 WASTE WATER SEWER RENEWALS
 BY CIPP LINING
 CONTRACT 20
 ROSSEAU AV W
 91.2m W OF BREWSTER ST TO 183.6m W OF BREWSTER ST

SHEET 89 OF 112
 CITY DRAWING NUMBER
10084 REV 0

AECOM REVIEW DRAFT CHK