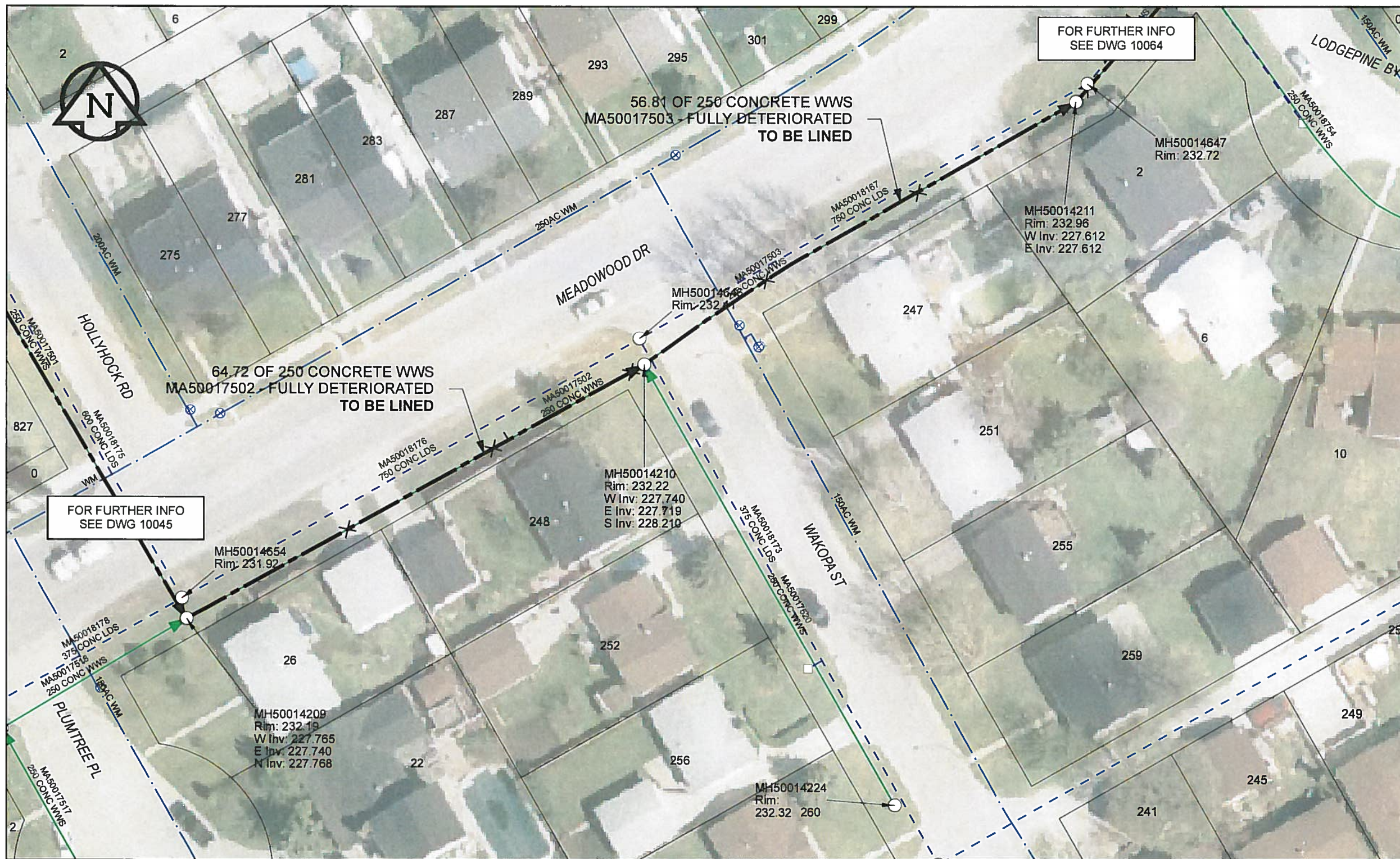


B SIZE 11" X 17" (279mm x 432mm)

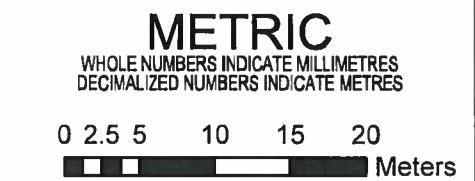


SEWER JUNCTION INFORMATION				
REF MH*	DIST		SIZE*	CLOCK AT*
	FROM*	REF MH		
MH50014209	21.60		150Ø	12
MH50014209	41.40		150Ø	12
MH50014209	43.30		150Ø	10
MH50014209	59.80		150Ø	12
MH50014210	16.20		150Ø	12
MH50014210	37.60		150Ø	12

*JUNCTION INFORMATION FROM VIDEO INSPECTION

WARNING
 IF POWER EQUIPMENT OR EXPLOSIVES ARE TO BE USED FOR EXCAVATION ON THIS PROJECT, THE CONTRACTOR MUST:
 1) NOTIFY THE GAS COMPANY OF THE PROPOSED LOCATION OF EXCAVATION.
 2) TAKE PRECAUTION TO AVOID DAMAGE TO GAS COMPANY INSTALLATIONS.
 SEE PROVINCIAL REGULATION 140/92 FOR DETAILS

APEGM
 Certificate of Authorization
 AECOM Canada Ltd.
 No. 4671 Date: 12/02/16



BID OPPORTUNITY NO.1048-2011

AECOM REVIEW DRFT CHK

FILE NAME: 60224031-01-C-068-R0X.PDF Saved By: JZ

LOCATION APPROVED UNDERGROUND STRUCTURES

SUPR. U/G STRUCTURES	DATE

NOTE:
 LOCATION OF UNDERGROUND STRUCTURES AS SHOWN ARE BASED ON THE BEST INFORMATION AVAILABLE. BUT NO GUARANTEE IS GIVEN THAT ALL EXISTING UTILITIES ARE SHOWN OR THAT THE GIVEN LOCATIONS ARE EXACT. CONFIRMATION OF EXISTENCE AND EXACT LOCATION OF ALL SERVICES MUST BE OBTAINED FROM THE INDIVIDUAL UTILITIES BEFORE PROCEEDING WITH CONSTRUCTION.

Can-Net GPS Reference Station WINN/810			
NO.	REVISIONS	YY/MM/DD	BY
0	ISSUED FOR CONSTRUCTION	12/02/21	JZ

AECOM

DESIGNED BY	ALD	CHECKED BY	PL
DRAWN BY	JZ	APPROVED BY	<i>Byron Leblanc</i>
HOR. SCALE	1:500	RELEASED FOR CONSTRUCTION	<i>[Signature]</i>
VERT. SCALE	N/A	DATE	12/02/16

PROFESSIONAL'S SEAL

CONSULTANT DRAWING NO.
 60224031-01-C-068-R0X.mxd

THE CITY OF WINNIPEG WATER AND WASTE DEPARTMENT

2011 WASTE WATER SEWER RENEWALS
 BY CIPP LINING
 CONTRACT 20
 MEADOWOOD DR
 HOLLYHOCK RD TO WAKOPA ST
 59.8m E OF WAKOPA ST TO WAKOPA ST

SHEET 68 OF 112
 CITY DRAWING NUMBER
10063 REV 0