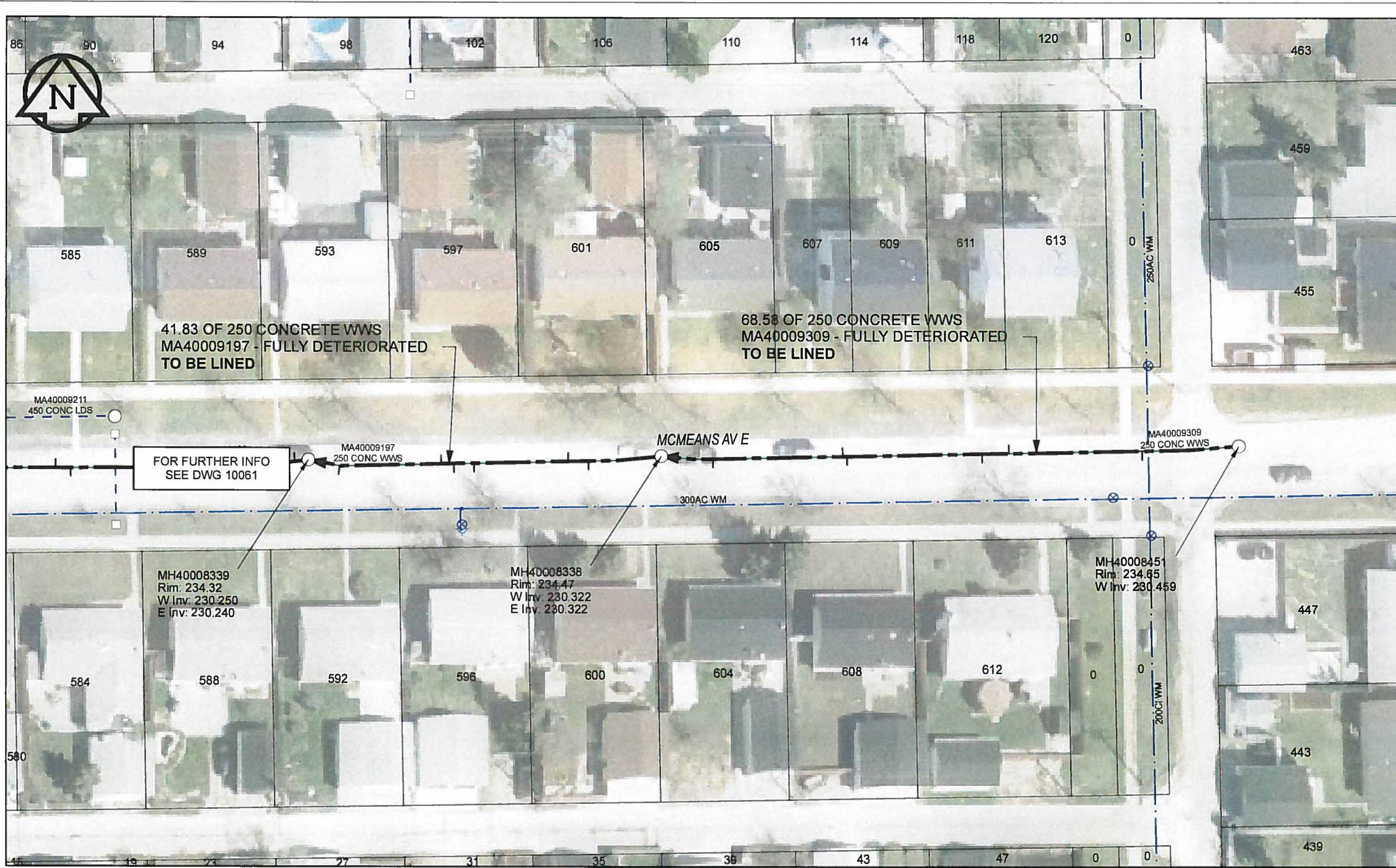


B SIZE 11" X 17" (279mm x 432mm)



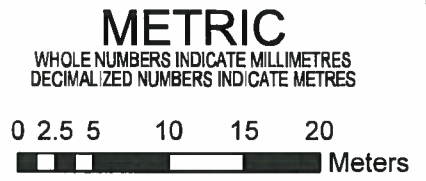
SEWER JUNCTION INFORMATION

REF MH*	DIST FROM*	REF MH	SIZE*	CLOCK AT*
MH40008451	11.50		100Ø	11
MH40008451	27.30		100Ø	02
MH40008451	30.50		100Ø	11
MH40008451	46.50		100Ø	11
MH40008451	47.00		100Ø	01
MH40008451	62.40		100Ø	11
MH40008338	8.60		150Ø	11
MH40008338	11.00		150Ø	02
MH40008338	22.20		150Ø	10
MH40008338	24.60		150Ø	11
MH40008338	26.10		150Ø	02
MH40008338	38.10		150Ø	11

*JUNCTION INFORMATION FROM VIDEO INSPECTION

WARNING
 IF POWER EQUIPMENT OR EXPLOSIVES ARE TO BE USED FOR EXCAVATION ON THIS PROJECT, THE CONTRACTOR MUST:
 1) NOTIFY THE GAS COMPANY OF THE PROPOSED LOCATION OF EXCAVATION
 2) TAKE PRECAUTION TO AVOID DAMAGE TO GAS COMPANY INSTALLATIONS
 SEE PROVINCIAL REGULATION 140/92 FOR DETAILS

AECOM
 Certificate of Authorization
 AECOM Canada Ltd.
 No. 4671 Date: 12/02/12



BID OPPORTUNITY NO.1048-2011

LOCATION APPROVED UNDERGROUND STRUCTURES

SUPR. U/G STRUCTURES COMMITTEE DATE

NOTE:
 LOCATION OF UNDERGROUND STRUCTURES AS SHOWN ARE BASED ON THE BEST INFORMATION AVAILABLE. BUT NO GUARANTEE IS GIVEN THAT ALL EXISTING UTILITIES ARE SHOWN OR THAT THE GIVEN LOCATIONS ARE EXACT. CONFIRMATION OF EXISTENCE AND EXACT LOCATION OF ALL SERVICES MUST BE OBTAINED FROM THE INDIVIDUAL UTILITIES BEFORE PROCEEDING WITH CONSTRUCTION.

Can-Net GPS Reference Station WINN/810

NO.	REVISIONS	YY/MM/DD	BY
0	ISSUED FOR CONSTRUCTION	12/02/12	JZ

AECOM

DESIGNED BY	ALD	CHECKED BY	PL
DRAWN BY	JZ	APPROVED BY	<i>Bryan Leleba</i>
HOR. SCALE	1:500	RELEASED FOR CONSTRUCTION	
VERT. SCALE	N/A	DATE	12/02/12

PROFESSIONAL'S SEAL

CONSULTANT DRAWING NO. 60224031-01-C-065-R0X.mxd

THE CITY OF WINNIPEG WATER AND WASTE DEPARTMENT

2011 WASTE WATER SEWER RENEWALS
 BY CIPP LINING
 CONTRACT 20
 MCMEANS AV E
 68.5m OF W OF REDONDA ST TO W OF REDONDA ST
 110.3m W OF REDONDA ST 68.5m OF W OF REDONDA ST

SHEET 65 OF 112
 CITY DRAWING NUMBER 10060 REV 0

AECOM REVIEW DRFT CHK
 FILE NAME: 60224031-01-C-065-R0X.PDF Saved By: JZ