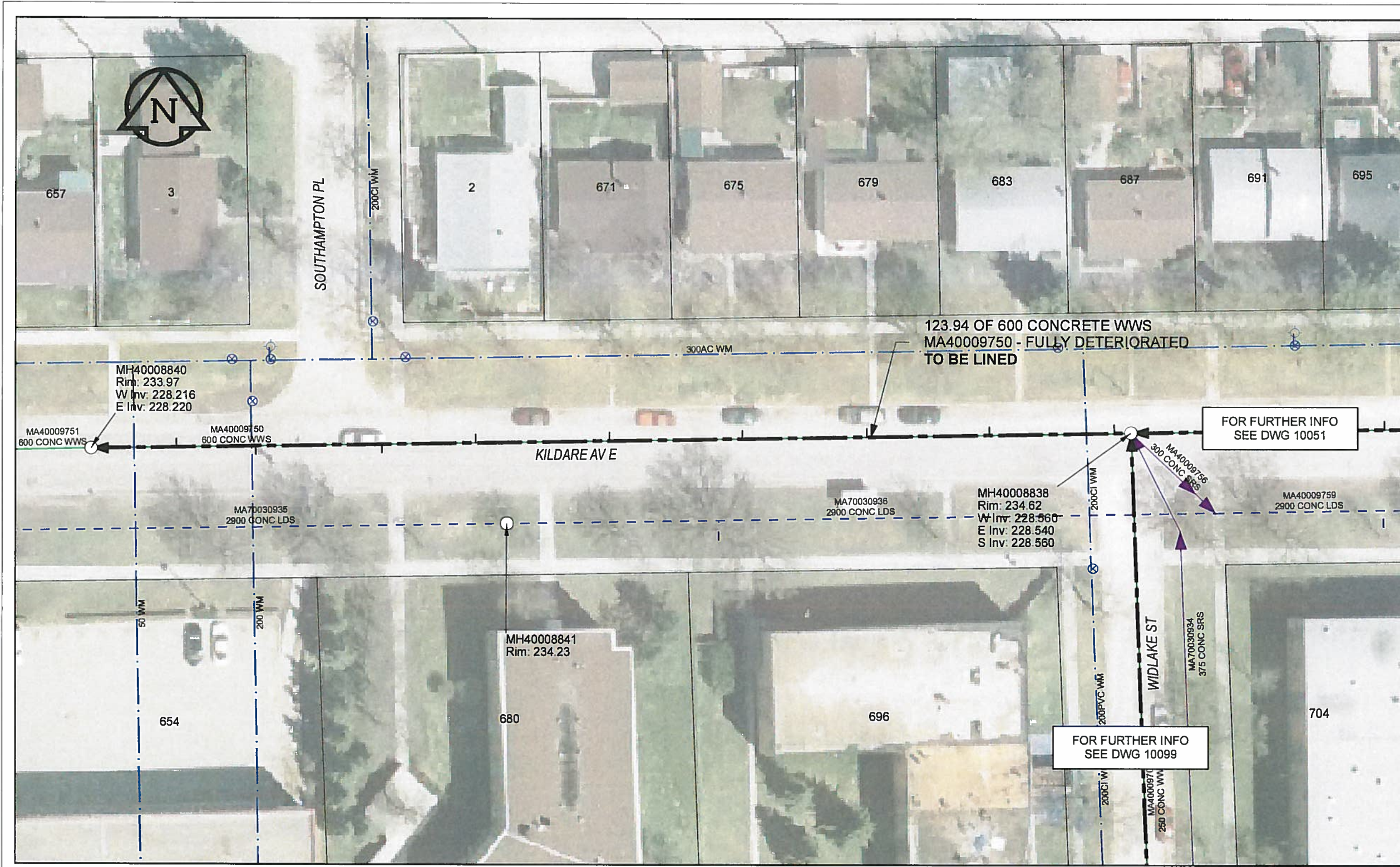


B SIZE 11" X 17" (279mm x 432mm)



SEWER JUNCTION INFORMATION

REF MH*	DIST FROM*	SIZE*	CLOCK AT*
MH40008838	2.00	150Ø	01
MH40008838	16.90	150Ø	02
MH40008838	31.50	150Ø	01
MH40008838	46.30	150Ø	02
MH40008838	62.20	150Ø	01
MH40008838	78.10	150Ø	02
MH40008838	89.30	150Ø	11
MH40008838	104.30	150Ø	10
MH40008838	113.70	150Ø	02

*JUNCTION INFORMATION FROM VIDEO INSPECTION

WARNING
 IF POWER EQUIPMENT OR EXPLOSIVES ARE TO BE USED FOR EXCAVATION ON THIS PROJECT, THE CONTRACTOR MUST:
 1) NOTIFY THE GAS COMPANY OF THE PROPOSED LOCATION OF EXCAVATION
 2) TAKE PRECAUTION TO AVOID DAMAGE TO GAS COMPANY INSTALLATIONS
 SEE PROVINCIAL REGULATION 140/92 FOR DETAILS

AECOM
 Certificate of Authorization
 AECOM Canada Ltd.
 No. 4671 Date: 12/02/12

METRIC
 WHOLE NUMBERS INDICATE MILLIMETRES
 DECIMALIZED NUMBERS INDICATE METRES

BID OPPORTUNITY NO.1048-2011

AECOM REVIEW DRAFT CHK AD	LOCATION APPROVED UNDERGROUND STRUCTURES		Can-Net GPS Reference Station WINN/810	
	SUPR. U/G STRUCTURES COMMITTEE	DATE		
NOTE: LOCATION OF UNDERGROUND STRUCTURES AS SHOWN ARE BASED ON THE BEST INFORMATION AVAILABLE. BUT NO GUARANTEE IS GIVEN THAT ALL EXISTING UTILITIES ARE SHOWN OR THAT THE GIVEN LOCATIONS ARE EXACT. CONFIRMATION OF ALL EXISTENCE AND EXACT LOCATION OF ALL SERVICES MUST BE OBTAINED FROM THE INDIVIDUAL UTILITIES BEFORE PROCEEDING WITH CONSTRUCTION.				
NO.	ISSUED FOR CONSTRUCTION	12/02/12	JZ	
	REVISIONS	YY/MM/DD	BY	

AECOM

DESIGNED BY	ALD	CHECKED BY	PL
DRAWN BY	JZ	APPROVED BY	<i>Byron Leblanc</i>
HOR. SCALE	1:500	RELEASED FOR CONSTRUCTION	<i>[Signature]</i>
VERT. SCALE	N/A	DATE	12/02/12

PROFESSIONAL'S SEAL
 PROVINCE OF MANITOBA
[Signature]
 FITCHETT
 5/21/12
 REGISTERED ENGINEER
 CONSULTANT DRAWING NO.
 60224031-01-C-057-R0X.mxd

THE CITY OF WINNIPEG
WATER AND WASTE DEPARTMENT

2011 WASTE WATER SEWER RENEWALS
 BY CIPP LINING
 CONTRACT 20
 KILDARE AVE
 WIDLAK ST TO 124.3m W OF WIDLAK ST

SHEET 57 OF 112
 CITY DRAWING NUMBER
10052 REV 0

FILE NAME: 60224031-01-C-057-R0X.PDF Saved By: JZ