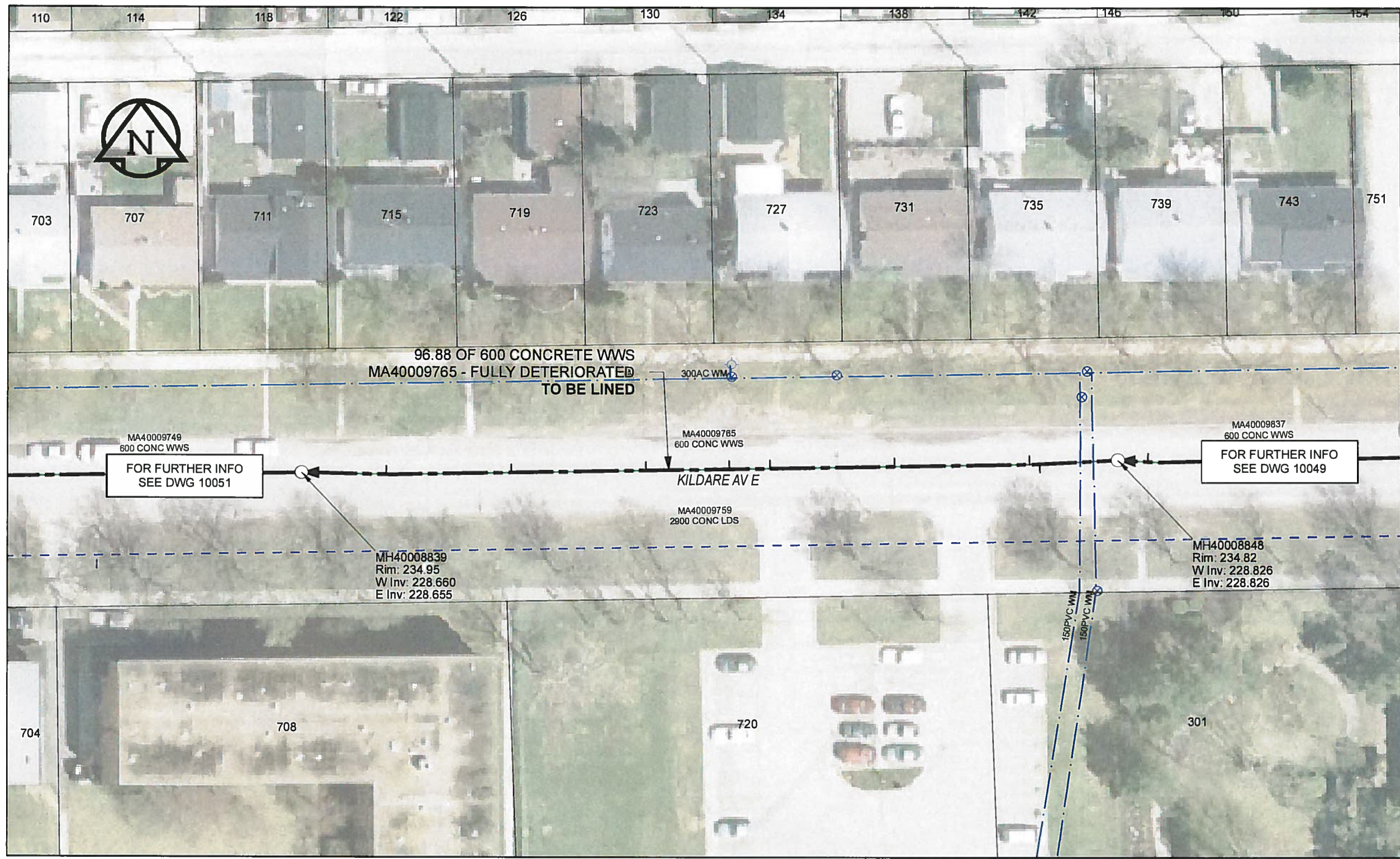


B SIZE 11" X 17" (279mm x 432mm)



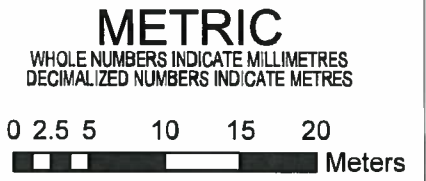
SEWER JUNCTION INFORMATION

REF MH*	DIST FROM* REF MH	SIZE*	CLOCK AT*
MH40008848	9.30	150Ø	10
MH40008848	10.50	150Ø	01
MH40008848	26.50	150Ø	01
MH40008848	41.30	150Ø	01
MH40008848	46.10	150Ø	02
MH40008848	56.00	150Ø	01
MH40008848	72.00	150Ø	01
MH40008848	86.80	150Ø	01

*JUNCTION INFORMATION FROM VIDEO INSPECTION

WARNING
 IF POWER EQUIPMENT OR EXPLOSIVES ARE TO BE USED FOR EXCAVATION ON THIS PROJECT, THE CONTRACTOR MUST:
 1) NOTIFY THE GAS COMPANY OF THE PROPOSED LOCATION OF EXCAVATION.
 2) TAKE PRECAUTION TO AVOID DAMAGE TO GAS COMPANY INSTALLATIONS.
 SEE PROVINCIAL REGULATION 140/92 FOR DETAILS

APEGM
 Certificate of Authorization
 AECOM Canada Ltd.
 No. 4671 Date: 12/02/12



BID OPPORTUNITY NO.1048-2011

LOCATION APPROVED UNDERGROUND STRUCTURES		Can-Net GPS Reference Station WINN/810	
SUPR. U/G STRUCTURES COMMITTEE	DATE		
NOTE: LOCATION OF UNDERGROUND STRUCTURES AS SHOWN ARE BASED ON THE BEST INFORMATION AVAILABLE. BUT NO GUARANTEE IS GIVEN THAT ALL EXISTING UTILITIES ARE SHOWN OR THAT THE GIVEN LOCATIONS ARE EXACT. CONFIRMATION OF EXISTENCE AND EXACT LOCATION OF ALL SERVICES MUST BE OBTAINED FROM THE INDIVIDUAL UTILITIES BEFORE PROCEEDING WITH CONSTRUCTION.			
0	ISSUED FOR CONSTRUCTION	12/02/21	JZ
NO.	REVISIONS	YY/MM/DD	BY

AECOM

DESIGNED BY	ALD	CHECKED BY	PL
DRAWN BY	JZ	APPROVED BY	<i>[Signature]</i>
HOR. SCALE	1:500	RELEASED FOR CONSTRUCTION	2/17/12
VERT. SCALE	N/A	DATE	12/02/12

PROFESSIONAL'S SEAL
 PROVINCE OF MANITOBA
 K. FITCHETT
 REGISTERED ENGINEER
 CONSULTANT DRAWING NO. 60224031-01-C-055-R0X.mxd

THE CITY OF WINNIPEG WATER AND WASTE DEPARTMENT

2011 WASTE WATER SEWER RENEWALS
 BY CIPP LINING
 CONTRACT 20
 KILDARE AVE
 96.6m W OF REDONDA ST TO 193.6m W OF REDONDA ST

SHEET 55 OF 112
 CITY DRAWING NUMBER 10050 REV 0

AECOM REVIEW DRIFT CHK
 FILE NAME: 60224031-01-C-055-R0X.PDF Saved By: JZ