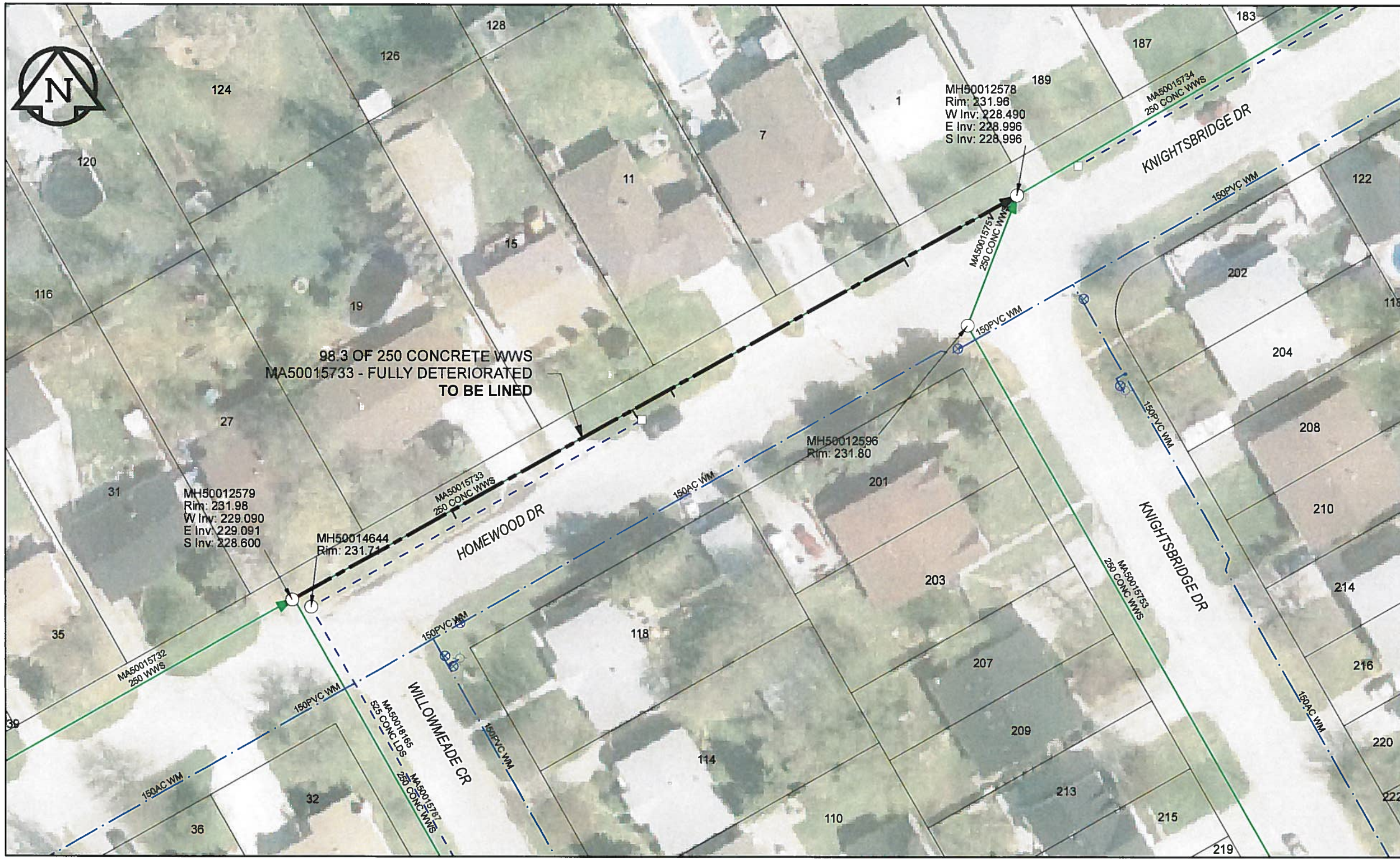


B SIZE 11" X 17" (279mm x 432mm)

AECOM REVIEW DRFT CHK AD  
 FILE NAME: 60224031-01-C-051-ROX.PDF Saved By: JZ



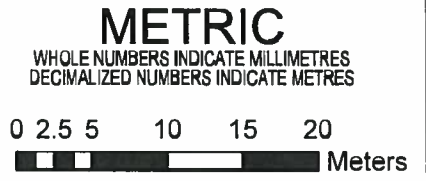
**SEWER JUNCTION INFORMATION**

REF MH*	DIST FROM*	SIZE*	CLOCK AT*
MH50012579	21.40	150Ø	02
MH50012579	45.90	150Ø	01
MH50012579	51.00	150Ø	02
MH50012579	82.70	150Ø	01
MH50012579	94.20	150Ø	03

\*JUNCTION INFORMATION FROM VIDEO INSPECTION

**WARNING**  
 IF POWER EQUIPMENT OR EXPLOSIVES ARE TO BE USED FOR EXCAVATION ON THIS PROJECT, THE CONTRACTOR MUST:  
 1) NOTIFY THE GAS COMPANY OF THE PROPOSED LOCATION OF EXCAVATION  
 2) TAKE PRECAUTION TO AVOID DAMAGE TO GAS COMPANY INSTALLATIONS  
 SEE PROVINCIAL REGULATION 140/92 FOR DETAILS

**AECOM**  
 Certificate of Authorization  
 AECOM Canada Ltd.  
 No. 4671 Date: 12/02/16



BID OPPORTUNITY NO.1048-2011

**LOCATION APPROVED UNDERGROUND STRUCTURES**

SUPR. U/G STRUCTURES COMMITTEE DATE  
 NOTE:  
 LOCATION OF UNDERGROUND STRUCTURES AS SHOWN ARE BASED ON THE BEST INFORMATION AVAILABLE. BUT NO GUARANTEE IS GIVEN THAT ALL EXISTING UTILITIES ARE SHOWN OR THAT THE GIVEN LOCATIONS ARE EXACT. CONFIRMATION OF EXISTENCE AND EXACT LOCATION OF ALL SERVICES MUST BE OBTAINED FROM THE INDIVIDUAL UTILITIES BEFORE PROCEEDING WITH CONSTRUCTION.

Can-Net GPS Reference Station WINN/810

NO.	ISSUED FOR CONSTRUCTION	DATE	BY
0	ISSUED FOR CONSTRUCTION	12/02/21	JZ
NO.	REVISIONS	YY/MM/DD	BY



DESIGNED BY	ALD	CHECKED BY	PL
DRAWN BY	JZ	APPROVED BY	<i>[Signature]</i>
HOR. SCALE	1:500	RELEASED FOR CONSTRUCTION	<i>[Signature]</i>
VERT. SCALE	N/A	DATE	12/02/16

PROFESSIONAL'S SEAL  
 PROVINCE OF MANITOBA  
 K. FITCHETT  
 REGISTERED ENGINEER  
 CONSULTANT DRAWING NO. 60224031-01-C-051-ROX.mxd

**THE CITY OF WINNIPEG WATER AND WASTE DEPARTMENT**

**2011 WASTE WATER SEWER RENEWALS BY CIPP LINING CONTRACT 20**  
 HOMEMOOD DR  
 WILLOWMEADE CR TO KNIGHTSBRIDGE DR (W LEG)

SHEET	51	OF	112
CITY DRAWING NUMBER	10046		
REV	0		