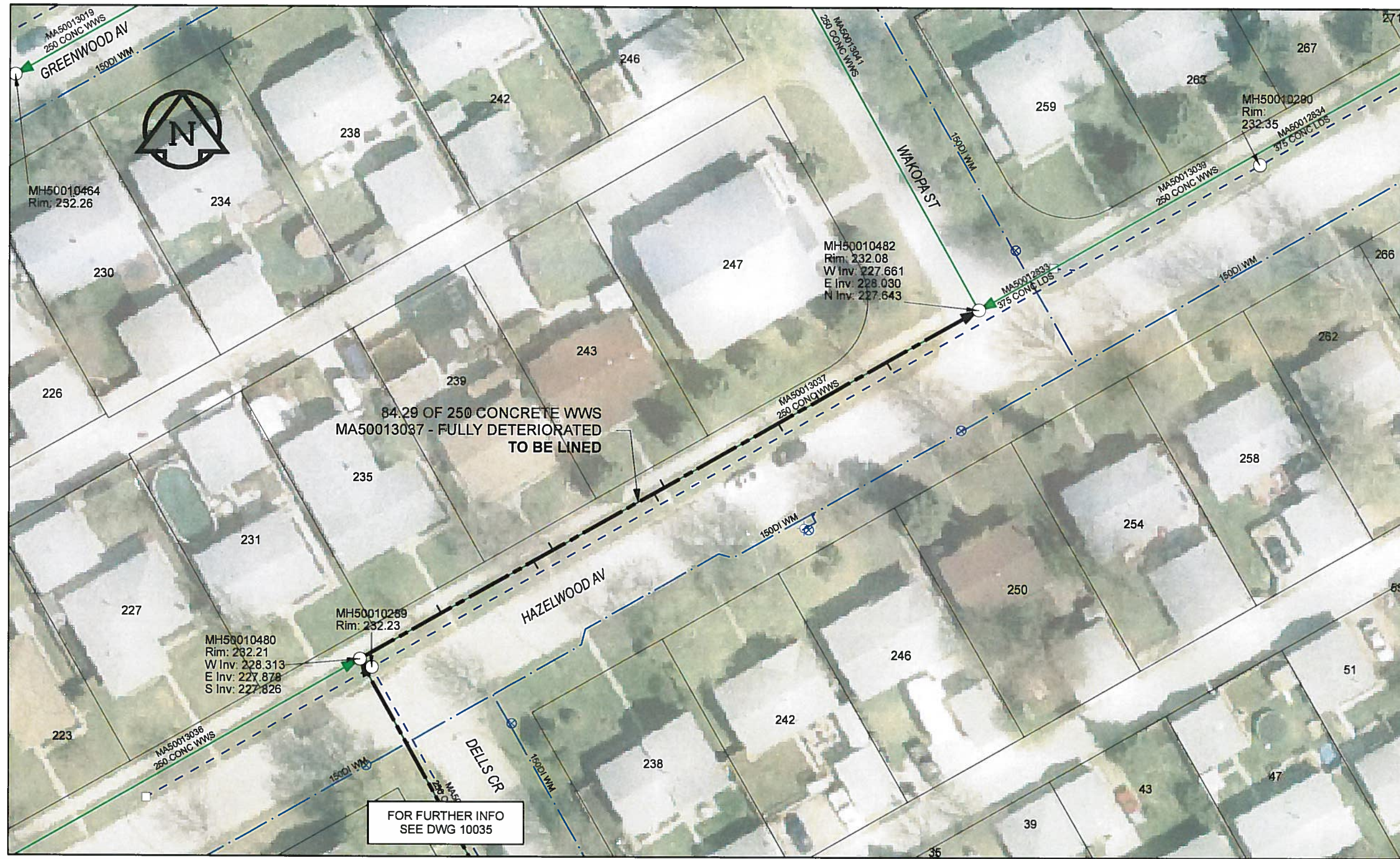


B SIZE 11" X 17" (279mm x 432mm)

FILE NAME: 60224031-01-C-048-R0X.PDF Saved By: JZ



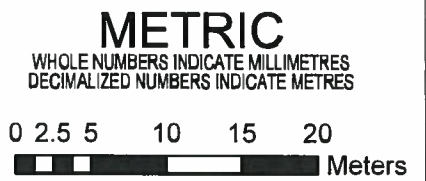
**SEWER JUNCTION INFORMATION**

REF MH*	DIST FROM* REF MH	SIZE*	CLOCK AT*
MH50010480	11.10	150Ø	10
MH50010480	23.70	150Ø	01
MH50010480	26.30	150Ø	11
MH50010480	40.10	150Ø	01
MH50010480	41.50	150Ø	11
MH50010480	57.00	150Ø	01
MH50010480	62.60	150Ø	11
MH50010480	71.80	150Ø	01

\*JUNCTION INFORMATION FROM VIDEO INSPECTION

**WARNING**  
 IF POWER EQUIPMENT OR EXPLOSIVES ARE TO BE USED FOR EXCAVATION ON THIS PROJECT, THE CONTRACTOR MUST:  
 1) NOTIFY THE GAS COMPANY OF THE PROPOSED LOCATION OF EXCAVATION.  
 2) TAKE PRECAUTION TO AVOID DAMAGE TO GAS COMPANY INSTALLATIONS.  
 SEE PROVINCIAL REGULATION 140/92 FOR DETAILS

**AECOM**  
 Certificate of Authorization  
 AECOM Canada Ltd.  
 No. 4671 Date: 12/12/12



BID OPPORTUNITY NO.1048-2011

<b>LOCATION APPROVED UNDERGROUND STRUCTURES</b>		Can-Net GPS Reference Station WINN/810	
SUPR. U/G STRUCTURES COMMITTEE	DATE		
<b>NOTE:</b> LOCATION OF UNDERGROUND STRUCTURES AS SHOWN ARE BASED ON THE BEST INFORMATION AVAILABLE. BUT NO GUARANTEE IS GIVEN THAT ALL EXISTING UTILITIES ARE SHOWN OR THAT THE GIVEN LOCATIONS ARE EXACT. CONFIRMATION OF EXISTENCE AND EXACT LOCATION OF ALL SERVICES MUST BE OBTAINED FROM THE INDIVIDUAL UTILITIES BEFORE PROCEEDING WITH CONSTRUCTION.			
0	ISSUED FOR CONSTRUCTION	12/02/21	JZ
NO.	REVISIONS	YYMM/DD	BY

**AECOM**

DESIGNED BY	ALD	CHECKED BY	PL
DRAWN BY	JZ	APPROVED BY	<i>[Signature]</i>
HOR. SCALE	1:500	RELEASED FOR CONSTRUCTION	<i>[Signature]</i>
VERT. SCALE	N/A	DATE	12/02/12

PROFESSIONAL'S SEAL  
 PROVINCE OF MANITOBA  
*[Signature]*  
 K. FITCHETT  
 Feb 16/12  
 REGISTERED ENGINEER  
 CONSULTANT DRAWING NO. 60224031-01-C-048-R0X.mxd

**THE CITY OF WINNIPEG WATER AND WASTE DEPARTMENT**

2011 WASTE WATER SEWER RENEWALS  
 BY CIPP LINING  
 CONTRACT 20  
 HAZELWOOD AV  
 85.2m E OF DELLS CR (W LEG) TO DELLS CR (W LEG)

SHEET 48 OF 112  
 CITY DRAWING NUMBER  
**10043** REV 0