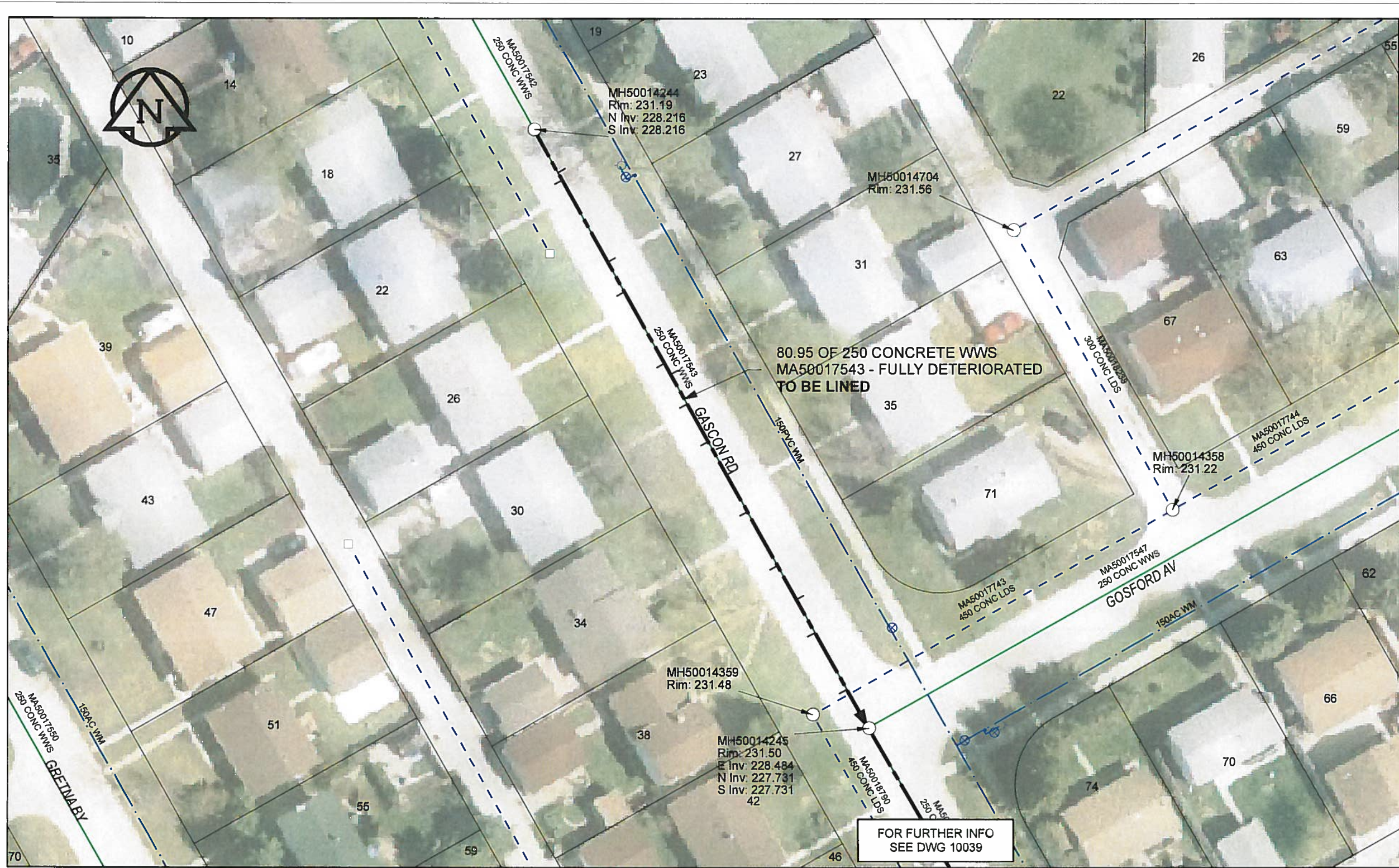


B SIZE 11" X 17" (279mm x 432mm)

FILE NAME: 60224031-01-C-043-ROX.PDF Saved By: JZ



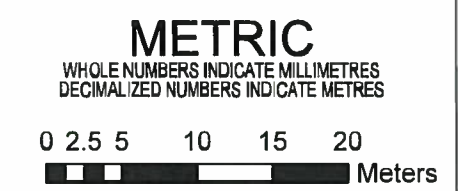
SEWER JUNCTION INFORMATION

REF MH*	DIST		SIZE*	CLOCK AT*
	FROM* REF	MH		
MH50014244		5.80	150Ø	09
MH50014244		6.80	150Ø	01
MH50014244		17.90	150Ø	10
MH50014244		21.90	150Ø	01
MH50014244		31.60	150Ø	02
MH50014244		33.10	150Ø	10
MH50014244		37.10	150Ø	02
MH50014244		42.20	150Ø	02
MH50014244		46.70	150Ø	10
MH50014244		51.70	150Ø	02
MH50014244		59.00	150Ø	02
MH50014244		63.60	150Ø	10
MH50014244		68.10	150Ø	02
MH50014244		75.80	150Ø	02

*JUNCTION INFORMATION FROM VIDEO INSPECTION

WARNING
 IF POWER EQUIPMENT OR EXPLOSIVES ARE TO BE USED FOR EXCAVATION ON THIS PROJECT, THE CONTRACTOR MUST:
 1) NOTIFY THE GAS COMPANY OF THE PROPOSED LOCATION OF EXCAVATION
 2) TAKE PRECAUTION TO AVOID DAMAGE TO GAS COMPANY INSTALLATIONS
 SEE PROVINCIAL REGULATION 140/92 FOR DETAILS

AP EGM
 Certificate of Authorization
 AECOM Canada Ltd.
 No. 4671 Date: 12/02/16



BID OPPORTUNITY NO.1048-2011

AECOM REVIEW DRFT CHK

LOCATION APPROVED UNDERGROUND STRUCTURES

SUPR. U/G STRUCTURES COMMITTEE	DATE

NOTE:
 LOCATION OF UNDERGROUND STRUCTURES AS SHOWN ARE BASED ON THE BEST INFORMATION AVAILABLE. BUT NO GUARANTEE IS GIVEN THAT ALL EXISTING UTILITIES ARE SHOWN OR THAT THE GIVEN LOCATIONS ARE EXACT. CONFIRMATION OF EXISTENCE AND EXACT LOCATION OF ALL SERVICES MUST BE OBTAINED FROM THE INDIVIDUAL UTILITIES BEFORE PROCEEDING WITH CONSTRUCTION.

Can-Net GPS Reference Station WINN/810

NO.	ISSUED FOR CONSTRUCTION	YY/MM/DD	BY
0	ISSUED FOR CONSTRUCTION	12/02/21	JZ

DESIGNED BY	ALD	CHECKED BY	<i>RL</i>
DRAWN BY	JZ	APPROVED BY	<i>Byron Lileba</i>
HOR. SCALE	1:500	RELEASED FOR CONSTRUCTION	<i>[Signature]</i>
VERT. SCALE	N/A	DATE	12/02/16

PROFESSIONAL'S SEAL

CONSULTANT DRAWING NO. 60224031-01-C-043-ROX.mxd

THE CITY OF WINNIPEG
WATER AND WASTE DEPARTMENT

2011 WASTE WATER SEWER RENEWALS
BY CIPP LINING
CONTRACT 20
GASCON RD
 81.1m N OF GOSFORD AV TO GOSFORD AV

SHEET	43	OF	112
CITY DRAWING NUMBER		10038	
REV	0		